

RACCORDI IN  
**ACCIAIO AL  
CARBONIO**

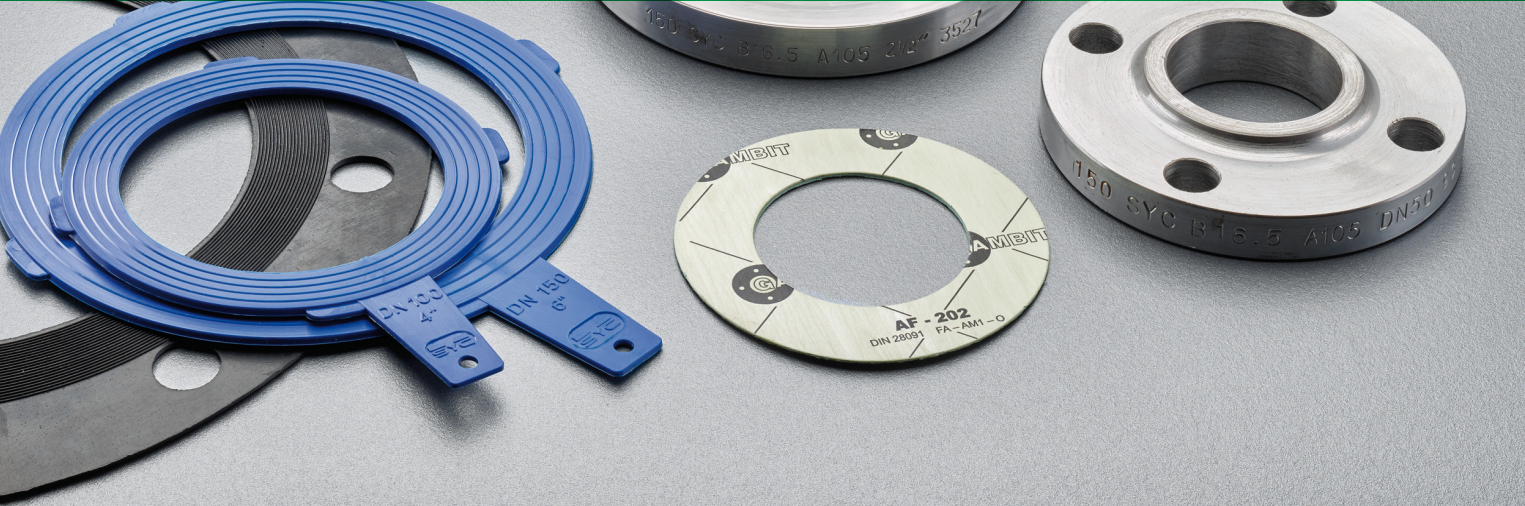
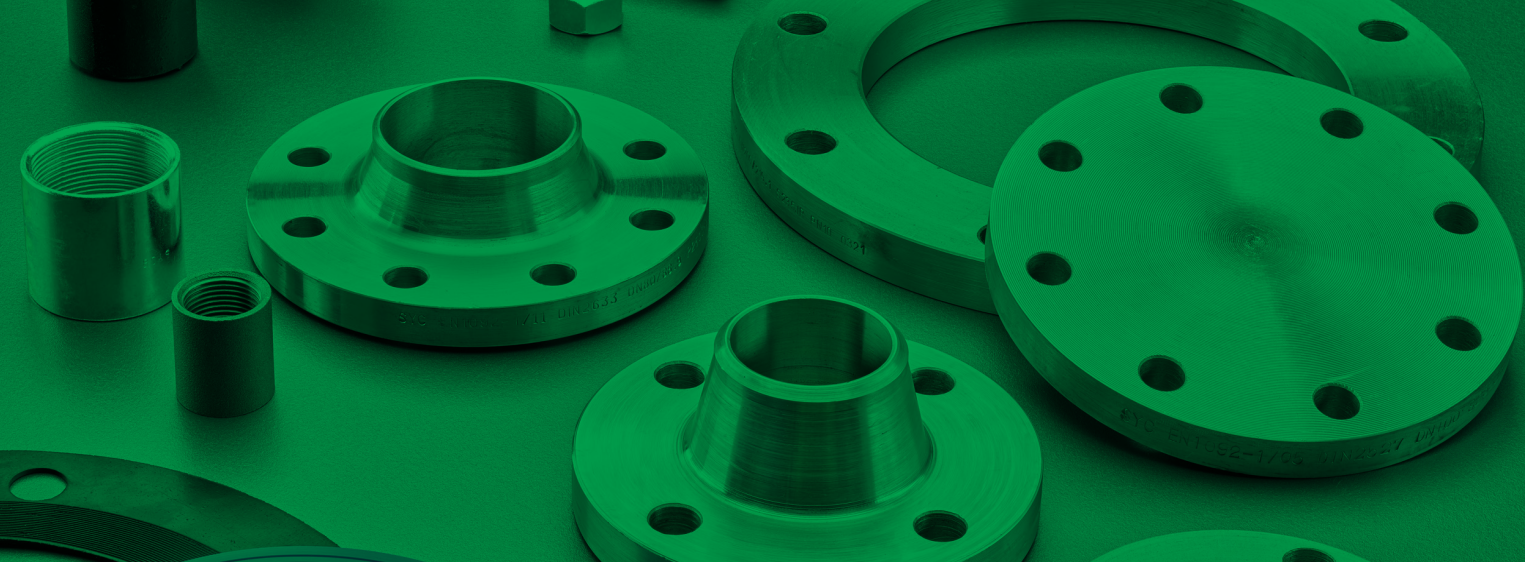
**LISTINO 2022**

## RACCORDI IN **ACCIAIO**

La raccorderia in acciaio al carbonio di ATUSA è realizzata secondo i massimi standard qualitativi, da produttori accuratamente selezionati dai nostri uffici tecnici, e con i quali proseguono partnership ultra decennali, volte al continuo miglioramento del prodotto e del servizio offerto ai nostri clienti

ATUSA propone una ampia gamma di raccordi in acciaio al carbonio a saldare secondo le norme EN 10253-1 e ASTM – ASME, nonché flange secondo la EN 1092-1 e barilotti e manicotti secondo EN 10226-1 / 10241. La maggioranza di questi prodotti sono corredati di certificato 3.1, nel caso dell'ASTM anche con resilienza a -10°C.

Le applicazioni più frequenti di questi raccordi sono quelle nell'ambito del trasporto di fluidi a basso tenore di ossigeno, come gas, olii o altri fluidi industriali, nonché acqua in circuiti chiusi, o anche antincendio o petrolchimica.



**RACCORDI IN ACCIAIO - NORMA EN**

**CURVE 3D EN 10253-1 - ACCIAIO S235**

DIMENSIONI		45°		90°		90° ZINCATE		DA TUBO SALDATO 90°		180°	
Ø	Ø EXT. x SPESSORE mm.	COD.	€	COD.	€	COD.	€	COD.	€	COD.	€
	17,0 x 1,8			C3XXXX17	6,83						
1/2"	21,3 x 2,0	C3450021	2,51	C3XXXX21	2,42	C3GXXX21	3,14			C3180021	6,46
3/4"	26,9 x 2,3	C3450027	2,70	C3XXXX27	2,57	C3GXXX27	3,45	C3HXXX27	2,30	C3180027	6,53
1"	33,7 x 2,6	C3450033	2,57	C3XXXX33	2,32	C3GXXX33	3,26	C3HXXX33	2,03	C3180033	6,65
	38,0 x 2,6			C3XXXX38	3,70						
1 1/4"	42,4 x 2,6	C3450042	3,07	C3XXXX42	2,88	C3GXXX42	3,95	C3HXXX42	2,52	C3180042	7,91
	44,5 x 2,6			C3XXXX44	4,14						
1 1/2"	48,3 x 2,6	C3450048	3,70	C3XXXX48	3,49	C3GXXX48	4,64	C3HXXX48	3,13	C3180048	9,29
	** 51,0 x 2,6			C3XXXX51	6,15						
	54,0 x 2,6			C3XXXX54	6,53						
	57,0 x 2,9			C3XXXX57	7,72			C3HXXX57	6,36		
2"	60,3 x 2,9	C3450060	6,02	C3XXXX60	5,57	C3GXXX60	7,66	C3HXXX60	4,81	C3180060	15,25
	70,0 x 2,9			C3XXXX70	10,23	C3GXXX70	14,31	C3HXXX70	8,56		
2 1/2"	76,1 x 2,9	C3450076	9,22	C3XXXX76	8,68	C3GXXX76	11,67	C3HXXX76	7,84	C3180076	23,34
3"	88,9 x 3,2	C3450089	12,86	C3XXXX89	13,25	C3GXXX89	18,01	C3HXXX89	11,10	C3180089	35,39
3 1/2"	101,6 x 3,6	C3450101	23,09	C3XXX101	21,70	C3GXX101	32,76	C3HXX101	18,68	C3180101	56,60
	108,0 x 3,6			C3XXX108	24,25	C3GXX108	34,70	C3HXX108	21,46		
4"	114,3 x 3,6	C3450114	23,22	C3XXX114	25,32	C3GXX114	34,07	C3HXX114	21,02	C3180114	64,26
	133,0 x 4,0			C3XXX133	43,66	C3GXX133	58,80	C3HXX133	35,36		
5"	139,7 x 4,0	C3450139	42,17	C3XXX139	43,44	C3GXX139	60,99	C3HXX139	35,82	C3180139	112,51
	159,0 x 4,5			C3XXX159	65,49	C3GXX159	87,35	C3HXX159	56,73		
6"	168,3 x 4,5	C3450168	64,76	C3XXX168	68,13	C3GXX168	90,86	C3HXX168	56,88	C3180168	179,72
7"	193,7 x 5,6			C3XXX193	155,44						
8"	219,1 x 6,3	C3450219	146,71	C3XXX219	171,25	C3GXX219	202,44	C3HXX219	139,87		
	244,5 x 6,3			C3XXX244	391,56						
10"	273,0 x 6,3	C3450273	256,72	C3XXX273	325,23	C3GXX273	366,59	C3HXX273	281,97		
12"	323,9 x 7,1	C3450324	454,38	C3XXX324	552,53			C3HXX324	466,49		
14"	355,6 x 8,0	C3450355	681,48	C3XXX355	833,21			C3HXX355	717,92		
16"	406,4 x 8,8	C3450406	967,63	C3XXX406	935,97						
18"	** 457,2 x 9,53			C3XXX457	*						
20"	** 508,0 x 9,53			C3XXX508	*						
24"	** 609,6 x 9,53			C3XXX609	*						

\*\* Non normata secondo EN 10253

\* A richiesta



## CURVE 5D EN 10253-1 - ACCIAIO S235

DIMENSIONI		45°		90°		90° ZINCATE		180°	
Ø	Ø EXT. x SPESSORE mm.	COD.	€	COD.	€	COD.	€	COD.	€
1/2"	21,3 x 2,0	C5450021	6,15	C5XXXX21	6,15				
3/4"	26,9 x 2,3	C5450027	6,28	C5XXXX27	6,28	CSGXXX27	8,79	C5180027	15,94
1"	33,7 x 2,6	C5450033	6,59	C5XXXX33	6,59	CSGXXX33	9,22	C5180033	16,82
1 1/4"	42,4 x 2,6	C5450042	7,72	C5XXXX42	7,84	CSGXXX42	10,98	C5180042	19,52
1 1/2"	48,3 x 2,6	C5450048	9,48	C5XXXX48	9,66	CSGXXX48	13,55	C5180048	23,53
2"	60,3 x 2,9	C5450060	12,49	C5XXXX60	12,80	CSGXXX60	17,95	C5180060	31,12
	70,0 x 2,9			C5XXXX70	20,14				
2 1/2"	76,1 x 2,9	C5450076	19,20	C5XXXX76	19,70	CSGXXX76	27,61	C5180076	47,50
3"	88,9 x 3,2	C5450089	27,86	C5XXXX89	30,81	CSGXXX89	43,11	C5180089	71,98
3 1/2"	101,6 x 3,6	C5450101	68,09	C5XXX101	70,78				
	108,0 x 3,6			C5XXX108	71,79				
4"	114,3 x 3,6	C5450114	53,34	C5XXX114	57,92	CSGXX114	81,07	C5180114	147,40
	133,0 x 4,0			C5XXX133	126,38				
5"	139,7 x 4,0			C5XXX139	118,35	CSGXX139	165,66		
	159,0 x 4,5			C5XXX159	193,59				
6"	168,3 x 4,5			C5XXX168	190,89	CSGXX168	267,26		
8"	219,1 x 6,3			C5XXX219	438,44	CSGXX219	613,83		
10"	273,0 x 6,3			C5XXX273	857,31	CSGXX273	1.200,24		
12"	323,9 x 7,1			C5XXX324	1.484,82				



## FONDI BOMBATI EN 10253-1 - ACCIAIO S235

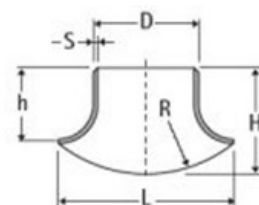
Ø	Ø EXT. mm.	SPESSORE mm.	COD.	€
3/4"	** 26,9	2,3	CCXXX27	1,17
1"	33,7	2,6	CCXXX34	1,33
1 1/4"	42,4	2,6	CCXXX42	1,41
1 1/2"	48,3	2,6	CCXXX48	1,48
2"	60,3	2,9	CCXXX60	1,80
	70,0	2,9	CCXXX70	2,89
2 1/2"	76,1	2,9	CCXXX76	2,89
3"	88,9	3,2	CCXXX89	3,51
3 1/2"	101,6	3,6	CCXXX101	9,37
	108,0	3,6	CCXXX108	9,68
4"	114,3	3,6	CCXXX114	10,15
	133,0	4,0	CCXXX133	12,96

Ø	Ø EXT. mm.	SPESSORE mm.	COD.	€
5"	139,7	4,0	CCXXX140	14,68
	159,0	4,5	CCXXX159	22,80
6"	168,3	4,5	CCXXX168	26,70
7"	193,7	5,6	CCXXX193	44,73
8"	219,1	6,3	CCXXX219	50,20
	244,5	6,3	CCXXX245	95,55
10"	273,0	6,3	CCXXX273	117,49
12"	323,9	7,1	CCXXX324	140,36
14"	355,6	8,0	CCXXX356	233,81
16"	406,4	8,8	CCXXX406	302,98
18"	** 457,0	8,0	CCXXX457	447,72
20"	** 508,0	8,0	CCXXX508	500,33
24"	** 610,0	8,0	CCXXX610	896,76

\*\* Non normata secondo EN 10253

## INNESTI A SCARPA A SALDARE DI TESTA DIN 2618 - ACCIAIO S235

Ø EXT. D mm	SPESSORE S mm	ALTEZZA H mm	ALTEZZA h mm	LARGHEZZA L mm	RAGGIO R mm	COD.	€
26,9	2,6	38	29	43	32	CDXXXX27	10,06
33,7	3,2	50	40	53	42	CDXXXX33	10,49
42,4	3,2	50	38	67	55	CDXXXX42	11,14
48,3	3,2	64	48	76	60	CDXXXX48	13,20
60,3	3,6	76	58	96	77	CDXXXX60	16,77
70,0	3,6	70	51	112	92	CDXXXX70	18,18
76,1	3,6	88	68	121	100	CDXXXX76	23,48
88,9	4,0	88	65	142	122	CDXXXX88	28,89
101,6	4,0	91	65	161	138	CDXXX101	40,03
108,0	4,0	97	68	172	144	CDXXX108	40,36
114,3	4,0	102	74	182	160	CDXXX114	54,53
133,0	4,0	119	83	213	174	CDXXX133	71,73
139,7	4,5	125	87	222	182	CDXXX139	76,38
159,0	4,5	143	100	254	212	CDXXX159	116,85
168,3	5,4	151	107	268	224	CDXXX168	142,81
193,7	6,3	174	122	309	258	CDXXX193	156,77
219,1	6,3	197	137	355	295	CDXXX219	261,07
273,0	7,1	240	155	455	367	CDXXX273	597,98
323,9	8,0	275	180	537	436	CDXXX323	864,13



## TI EN 10253-1 - ACCIAIO S235

Ø	Ø EXT. mm.	SPESSORE mm.	COD.	€
1/2"	21,3	2,0	CTDXXX21	10,12
3/4"	26,9	2,3	CTDXXX27	10,55
1"	33,7	2,6	CTDXXX33	12,17
1 1/4"	42,4	2,6	CTDXXX42	13,70
1 1/2"	48,3	2,6	CTDXXX48	16,25
2"	60,3	2,9	CTDXXX60	20,33
2 1/2"	76,1	2,9	CTDXXX76	32,08
3"	88,9	3,2	CTDXXX89	45,18
3 1/2"	101,6	3,6	CTDXX101	77,08

Ø	Ø EXT. mm.	SPESSORE mm.	COD.	€
4"	114,3	3,6	CTDXX114	63,77
5"	139,7	4,0	CTDXX139	89,33
6"	168,3	4,5	CTDXX168	131,78
8"	219,1	6,3	CTDXX219	350,18
10"	273,0	6,3	CTDXX273	665,11
12"	323,9	7,1	CTDXX323	997,00
14"	355,6	8,0	CTDXX355	1.721,64
16"	406,4	8,8	CTDXX406	2.357,77



## RIDUZIONI CONCENTRICHE EN 10253-1 FORMA 2 - ACCIAIO S235

Ø	Ø EXT. mm.	SPESSORE mm.	COD.	€
3/4" x 1/2"	26,9 x 21,3	2,3 - 2,0	CRXX2721	4,41
1" x 1/2"	33,7 x 21,3	2,6 - 2,0	CRXX3321	5,23
1" x 3/4"	33,7 x 26,9	2,6 - 2,3	CRXX3327	4,60
1 1/4" x 1/2"	42,4 x 21,3	2,6 - 2,0	CRXX4221	7,75
1 1/4" x 3/4"	42,4 x 26,9	2,6 - 2,3	CRXX4227	5,16
1 1/4" x 1"	42,4 x 33,7	2,6 - 2,6	CRXX4233	4,72
1 1/2" x 1/2"	** 48,3 x 21,3	2,6 - 2,0	CRXX4821	9,26
1 1/2" x 3/4"	48,3 x 26,9	2,6 - 2,3	CRXX4827	7,12
1 1/2" x 1"	48,3 x 33,7	2,6 - 2,6	CRXX4833	5,60
1 1/2" x 1 1/4"	48,3 x 42,4	2,6 - 2,6	CRXX4842	5,16
2" x 3/4"	** 60,3 x 26,9	2,9 - 2,3	CRXX6027	11,40
2" x 1"	60,3 x 33,7	2,9 - 2,6	CRXX6033	7,43
2" x 1 1/4"	60,3 x 42,4	2,9 - 2,6	CRXX6042	6,99
2" x 1 1/2"	60,3 x 48,3	2,9 - 2,6	CRXX6048	5,67
2 1/2" x 1"	** 76,1 x 33,7	2,9 - 2,6	CRXX7633	18,58
2 1/2" x 1 1/4"	76,1 x 42,4	2,9 - 2,6	CRXX7642	9,19
2 1/2" x 1 1/2"	76,1 x 48,3	2,9 - 2,6	CRXX7648	8,37
2 1/2" x 2"	76,1 x 60,3	2,9 - 2,9	CRXX7660	7,49
3" x 1 1/4"	** 88,9 x 42,4	3,2 - 2,6	CRXX8942	16,56
3" x 1 1/2"	88,9 x 48,3	3,2 - 2,6	CRXX8948	12,78
3" x 2"	88,9 x 60,3	3,2 - 2,9	CRXX8960	10,33
3" x 2 1/2"	88,9 x 76,1	3,2 - 2,9	CRXX8976	8,69
3 1/2" x 2"	** 101,6 x 60,3	3,6 - 2,9	CRX10160	21,22
3 1/2" x 2 1/2"	** 101,6 x 76,1	3,6 - 2,9	CRX10176	15,30
3 1/2" x 3"	** 101,6 x 88,9	3,6 - 3,2	CRX10189	13,98
	** 108,0 x 60,3	3,6 - 2,9	CRX10860	21,35
	** 108,0 x 76,1	3,6 - 2,9	CRX10876	17,44
	** 108,0 x 88,9	3,6 - 3,2	CRX10889	14,99
4" x 1 1/2"	** 114,3 x 48,3	3,6 - 2,6	CRX11448	27,39
4" x 2"	114,3 x 60,3	3,6 - 2,9	CRX11460	21,35
4" x 2 1/2"	114,3 x 76,1	3,6 - 2,9	CRX11476	16,81
4" x 3"	114,3 x 88,9	3,6 - 3,2	CRX11489	14,99
4" x 3 1/2"	** 114,3 x 101,6	3,6 - 3,6	CR114101	15,68
	** 133,0 x 76,1	4,0 - 2,9	CRX13376	34,95
	** 133,0 x 88,9	4,0 - 3,2	CRX13389	31,30
	** 133,0 x 101,6	4,0 - 3,6	CR133101	30,86
	** 133,0 x 108,0	4,0 - 3,6	CR133108	26,38
	** 133,0 x 114,3	4,0 - 3,6	CR133114	24,05

Ø	Ø EXT. mm.	SPESSORE mm.	COD.	€
5" x 2"	** 139,7 x 60,3	4,0 - 2,9	CRX13960	44,52
5" x 2 1/2"	139,7 x 76,1	4,0 - 2,9	CRX13976	37,15
5" x 3"	139,7 x 88,9	4,0 - 3,2	CRX13989	32,18
5" x 3 1/2"	** 139,7 x 101,6	4,0 - 3,6	CR139101	32,37
	** 139,7 x 108,0	4,0 - 3,6	CR139108	30,41
5" x 4"	139,7 x 114,3	4,0 - 3,6	CR139114	24,24
	** 159,0 x 88,9	4,5 - 3,2	CRX15989	51,13
	** 159,0 x 108,0	4,5 - 3,6	CR159108	40,62
	** 159,0 x 114,3	4,5 - 3,6	CR159114	38,22
	** 159,0 x 133,0	4,5 - 4,0	CR159133	36,65
	** 159,0 x 139,7	4,5 - 4,0	CR159139	33,81
6" x 2 1/2"	** 168,3 x 76,1	4,5 - 2,9	CRX16876	60,95
6" x 3"	168,3 x 88,9	4,5 - 3,2	CRX16889	54,47
6" x 4"	168,3 x 114,3	4,5 - 3,6	CR168114	37,21
6" x 5"	168,3 x 139,7	4,5 - 4,0	CR168139	33,50
	** 193,7 x 114,3	5,6 - 3,6	CR193114	108,31
	** 193,7 x 133,0	5,6 - 4,0	CR193133	101,25
	** 193,7 x 159,0	5,6 - 4,5	CR193159	100,94
	** 193,7 x 168,3	5,6 - 4,5	CR193168	82,49
8" x 4"	219,1 x 114,3	6,3 - 3,6	CR219114	84,13
	** 219,1 x 133,0	6,3 - 4,0	CR219133	79,66
8" x 5"	219,1 x 139,7	6,3 - 4,0	CR219139	69,39
	** 219,1 x 159,0	6,3 - 4,5	CR219159	67,00
8" x 6"	219,1 x 168,3	6,3 - 4,5	CR219168	59,88
10" x 5"	273,0 x 139,7	6,3 - 4,0	CR273139	139,35
10" x 6"	273,0 x 168,3	6,3 - 4,5	CR273168	113,79
10" x 8"	273,0 x 219,1	6,3 - 6,3	CR273219	95,40
12" x 6"	323,9 x 168,3	7,1 - 4,5	CR323168	198,67
12" x 8"	323,9 x 219,1	7,1 - 6,3	CR323219	182,49
12" x 10"	323,9 x 273,0	7,1 - 6,3	CR323273	164,54
14" x 8"	355,6 x 219,1	8,0 - 6,3	CR355219	342,87
14" x 10"	355,6 x 273,0	8,0 - 6,3	CR355273	331,66
14" x 12"	355,6 x 323,9	8,0 - 7,1	CR355323	328,64
16" x 10"	406,4 x 273,0	8,8 - 6,3	CR406273	484,61
16" x 12"	406,4 x 323,9	8,8 - 7,1	CR406323	474,79
16" x 14"	406,4 x 355,6	8,8 - 8,0	CR406355	437,58

\*\* Non normata secondo EN 10253

## RACCORDI IN ACCIAIO A SALDARE NORMA ASME

### CURVE ASTM A-234 WPB - ASME B 16.9



DIMENSIONI		STD								XS					
		LONG RADIUS						SHORT RADIUS		LONG RADIUS				SHORT RADIUS	
		90°		45°		180°		90°		90°		45°		90°	
Ø	Ø EXT. mm.	COD.	€	COD.	€	COD.	€	COD.	€	COD.	€	COD.	€	COD.	€
1/2"	21,3	CSTL900M	3,79	CSTL450M	3,33					CXSL900M	6,60	CXSL450M	6,60		
3/4"	26,7	CSTL900T	3,92	CSTL450T	3,40					CXSL900T	6,73	CXSL450T	6,73		
1"	33,4	CSTL9001	4,38	CSTL4501	3,66			CSTS9001	11,96	CXSL9001	6,86	CXSL4501	6,86	CXSS9001	17,18
1 1/4"	42,2	CSTL901C	4,97	CSTL451C	4,12			CSTS901C	12,61	CXSL901C	7,91	CXSL451C	7,91	CXSS901C	19,73
1 1/2"	48,3	CSTL901M	5,75	CSTL451M	4,90	CSTL181M	15,29	CSTS901M	12,81	CXSL901M	9,08	CXSL451M	9,08	CXSS901M	20,19
2"	60,3	CSTL9002	7,25	CSTL4502	6,34	CSTL1802	34,70	CSTS9002	14,11	CXSL9002	11,89	CXSL4502	11,89	CXSS9002	21,89
2 1/2"	73,0	CSTL902M	11,70	CSTL452M	9,67	CSTL182M	60,83	CSTS902M	19,28	CXSL902M	20,84	CXSL452M	20,84	CXSS902M	37,05
3"	88,9	CSTL9003	17,25	CSTL4503	14,18	CSTL1803	90,10	CSTS9003	22,41	CXSL9003	28,23	CXSL4503	28,23	CXSS9003	45,48
3 1/2"	101,6	CSTL903M	13,62	CSTL453M	19,60					CXSL903M	42,54	CXSL453M	40,12		
4"	114,3	CSTL9004	28,75	CSTL4504	22,74	CSTL1804	143,88	CSTS9004	40,12	CXSL9004	46,33	CXSL4504	39,99	CXSS9004	65,67
5"	141,3	CSTL9005	51,03	CSTL4505	40,31	CSTL1805	245,42	CSTS9005	73,83	CXSL9005	83,44	CXSL4505	74,81	CXSS9005	154,40
6"	168,3	CSTL9006	75,53	CSTL4506	59,79	CSTL1806	419,48	CSTS9006	90,10	CXSL9006	127,94	CXSL4506	109,77	CXSS9006	186,74
8"	219,1	CSTL9008	149,63	CSTL4508	118,40			CSTS9008	186,15	CXSL9008	260,77	CXSL4508	196,80	CXSS9008	316,31
10"	273,0	CSTL9010	282,27	CSTL4510	217,45			CSTS9010	364,14	CXSL9010	417,26	CXSL4510	332,45	CXSS9010	510,89
12"	323,8	CSTL9012	409,81	CSTL4512	322,19			CSTS9012	546,18	CXSL9012	594,20	CXSL4512	424,32	CXSS9012	715,54
14"	355,6	CSTL9014	557,81	CSTL4514	440,78			CSTS9014	793,88	CXSL9014	777,68	CXSL4514	516,77	CXSS9014	1.250,48
16"	406,4	CSTL9016	735,79	CSTL4516	559,31			CSTS9016	1006,24	CXSL9016	1.017,61	CXSL4516	917,96	CXSS9016	1.496,02
18"	457,0	CSTL9018	1.242,24	CSTL4518	758,47										
20"	508,0	CSTL9020	1.477,60	CSTL4520	972,13										
24"	610,0	CSTL9024	2.354,13	CSTL4524	1.359,40										



### FONDI BOMBATI ASTM A-234 WPB - ASME B 16.9

DIMENSIONI		STD		XS	
Ø	Ø EXT. mm.	COD.	€	COD.	€
1/2"	21,3	CCSTXX0M	4,90	CCXSXX0M	5,82
3/4"	26,7	CCSTXX0T	5,03	CCXSXX0T	6,01
1"	33,4	CCSTXX01	5,49	CCXSXX01	6,21
1 1/4"	42,2	CCSTXX1C	5,82	CCXSXX1C	8,49
1 1/2"	48,3	CCSTXX1M	6,27	CCXSXX1M	8,82
2"	60,3	CCSTXX02	6,60	CCXSXX02	8,95
2 1/2"	73,0	CCSTXX2M	8,17	CCXSXX2M	11,37
3"	88,9	CCSTXX03	9,08	CCXSXX03	13,07
3 1/2"	101,6	CCSTXX3M	13,13	CCXSXX3M	17,84
4"	114,3	CCSTXX04	15,16	CCXSXX04	22,80
5"	141,3	CCSTXX05	21,82	CCXSXX05	32,08
6"	168,3	CCSTXX06	30,38	CCXSXX06	42,86
8"	219,1	CCSTXX08	51,55	CCXSXX08	77,95
10"	273,0	CCSTXX10	91,80	CCXSXX10	140,28
12"	323,8	CCSTXX12	135,12	CCXSXX12	174,46
14"	355,6	CCSTXX14	177,07	CCXSXX14	272,66
16"	406,4	CCSTXX16	229,21	CCXSXX16	311,61
18"	457,0	CCSTXX18	287,89	CCXSXX18	449,67
20"	508,0	CCSTXX20	328,86	CCXSXX20	575,78
24"	610,0	CCSTXX24	499,52	CCXSXX24	686,40



### TI ASTM A-234 WPB - ASME B 16.9

STD		XS	
COD.	€	COD.	€
CTXXXX21	7,58	CTXSXX0M	10,58
CTXXXX27	7,72	CTXSXX0T	10,84
CTXXXX33	8,98	CTXSXX01	12,51
CTXXXX42	9,45	CTXSXX1C	15,17
CTXXXX48	11,98	CTXSXX1M	19,23
CTXXXX60	15,70	CTXSXX02	31,47
CTXXXX76	26,94	CTXSXX2M	43,11
CTXXXX89	34,73	CTXSXX03	55,82
CTXXX101	51,03	CTXSXX3M	71,98
CTXXX114	52,42	CTXSXX04	83,16
CTXXX140	83,83	CTXSXX05	142,50
CTXXX168	114,23	CTXSXX06	218,61
CTXXX219	193,20	CTXSXX08	359,65
CTXXX273	354,00	CTXSXX10	564,16
CTXXX324	613,59	CTXSXX12	1.276,07
CTXXX355	1.212,81	CTXSXX14	1.702,85
CTXXX406	1.710,04	CTXSXX16	2.306,39
CTXXX457	2.103,75		
CTXXX508	2.241,73		
CTXXX610	3.731,89		



# TI RIDOTTI E RIDUZIONI CONCENTRICHE ED ECCENTRICHE ASTM A-234 WPB - ASME B 16.9



DIMENSIONI		TI RIDOTTI		RIDUZIONI CONCENTRICHE				RIDUZIONI ECCENTRICHE	
		STD		STD		XS		STD	
Ø	Ø EXT. mm.	COD.	€	COD.	€	COD.	€	COD.	€
3/4" x 1/2"	26,7 x 21,3	CTST0T0M	9,91	CRST0T0M	7,25	CRXS0T0M	9,54	CREX0T0M	10,19
1" x 1/2"	33,4 x 21,3	CTST010M	10,71	CRST010M	7,38	CRXS010M	9,87	CREX010M	10,39
1" x 3/4"	33,4 x 26,7	CTST010T	9,58	CRST010T	6,86	CRXS010T	9,02	CREX010T	11,24
1 1/4" x 1/2"	42,2 x 21,3	CTST1C0M	11,91	CRST1C0M	10,13	CRXS1C0M	11,24	CREX1C0M	16,99
1 1/4" x 3/4"	42,2 x 26,7	CTST1C0T	11,58	CRST1C0T	7,97	CRXS1C0T	10,06	CREX1C0T	13,98
1 1/4" x 1"	42,2 x 33,4	CTST1C01	11,38	CRST1C01	7,38	CRXS1C01	9,74	CREX1C01	11,70
1 1/2" x 1/2"	48,3 x 21,3	CTST1M0M	13,70	CRST1M0M	11,63	CRXS1M0M	14,96	CREX1M0M	19,93
1 1/2" x 3/4"	48,3 x 26,7	CTST1M0T	13,51	CRST1M0T	9,02	CRXS1M0T	13,92	CREX1M0T	16,86
1 1/2" x 1"	48,3 x 33,4	CTST1M01	12,91	CRST1M01	8,10	CRXS1M01	13,07	CREX1M01	14,70
1 1/2" x 1 1/4"	48,3 x 42,2	CTST1M1C	12,64	CRST1M1C	7,71	CRXS1M1C	12,28	CREX1M1C	13,26
2" x 1/2"	60,3 x 21,3			CRST020M	15,16				
2" x 3/4"	60,3 x 26,7			CRST020T	13,07			CREX020T	20,91
2" x 1"	60,3 x 33,4	CTST0201	21,29	CRST0201	9,21	CRXS0201	14,37	CREX0201	17,18
2" x 1 1/4"	60,3 x 42,2	CTST021C	20,36	CRST021C	8,17	CRXS021C	12,02	CREX021C	16,53
2" x 1 1/2"	60,3 x 48,3	CTST021M	19,76	CRST021M	7,71	CRXS021M	10,65	CREX021M	14,64
2 1/2" x 1"	73,0 x 33,4	CTST2M01	33,53	CRST2M01	20,06		#N/A	CREX2M01	33,98
2 1/2" x 1 1/4"	73,0 x 42,2	CTST2M1C	33,46	CRST2M1C	12,94	CRXS2M1C	21,56	CREX2M1C	30,58
2 1/2" x 1 1/2"	73,0 x 48,3	CTST2M1M	33,06	CRST2M1M	12,02	CRXS2M1M	19,80	CREX2M1M	25,16
2 1/2" x 2"	73,0 x 60,3	CTST2M02	32,86	CRST2M02	11,37	CRXS2M02	18,95	CREX2M02	16,79
3" x 1"	88,9 x 33,4	CTST0301	40,18	CRST0301	28,29				
3" x 1 1/4"	88,9 x 42,2	CTST031C	40,18	CRST031C	21,50	CRXS031C	18,69	CREX031C	36,46
3" x 1 1/2"	88,9 x 48,3	CTST031M	39,52	CRST031M	13,79	CRXS031M	17,90	CREX031M	21,50
3" x 2"	88,9 x 60,3	CTST0302	39,38	CRST0302	11,57	CRXS0302	16,73	CREX0302	17,05
3" x 2 1/2"	88,9 x 73,0	CTST032M	39,18	CRST032M	11,57	CRXS032M	16,07	CREX032M	15,94
4" x 1 1/4"	114,3 x 42,2		#N/A	CRST041C	42,14				
4" x 1 1/2"	114,3 x 48,3	CTST041M	64,73	CRST041M	28,10	CRXS041M	34,63	CREX041M	47,44
4" x 2"	114,3 x 60,3	CTST0402	61,27	CRST0402	17,97	CRXS0402	30,58	CREX0402	34,24
4" x 2 1/2"	114,3 x 73,0	CTST042M	60,81	CRST042M	17,12	CRXS042M	30,25	CREX042M	27,83
4" x 3"	114,3 x 88,9	CTST0403	60,14	CRST0403	14,96	CRXS0403	29,93	CREX0403	23,33
5" x 2"	141,3 x 60,3	CTST0502	100,92	CRST0502	44,63			CREX0502	87,75
5" x 2 1/2"	141,3 x 73,0	CTST052M	100,59	CRST052M	37,83	CRXS052M	46,85	CREX052M	73,70
5" x 3"	141,3 x 88,9	CTST0503	100,19	CRST0503	28,49	CRXS0503	44,37	CREX0503	54,75
5" x 4"	141,3 x 114,3	CTST0504	98,66	CRST0504	26,20	CRXS0504	43,97	CREX0504	43,52
6" x 2"	168,3 x 60,3	CTST0602	134,85	CRST0602	76,38				
6" x 2 1/2"	168,3 x 73,0	CTST062M	132,72	CRST062M	54,43	CRXS062M	60,50	CREX062M	88,34
6" x 3"	168,3 x 88,9	CTST0603	132,06	CRST0603	39,73	CRXS0603	56,58	CREX0603	57,76
6" x 4"	168,3 x 114,3	CTST0604	130,79	CRST0604	36,33	CRXS0604	52,99	CREX0604	49,33
6" x 5"	168,3 x 141,3	CTST0605	130,66	CRST0605	33,26	CRXS0605	50,51	CREX0605	44,95
8" x 3"	219,1 x 88,9	CTST0803	279,28	CRST0803	100,75				
8" x 4"	219,1 x 114,3	CTST0804	272,23	CRST0804	71,94	CRXS0804	127,09	CREX0804	125,06
8" x 5"	219,1 x 141,3	CTST0805	262,32	CRST0805	67,63	CRXS0805	119,57	CREX0805	101,93
8" x 6"	219,1 x 168,3	CTST0806	253,87	CRST0806	54,23	CRXS0806	102,98	CREX0806	78,21
10" x 4"	273,0 x 114,3	CTST1004	423,12	CRST1004	193,01			CREX1004	455,29
10" x 5"	273,0 x 141,3	CTST1005	416,07	CRST1005	109,38	CRXS1005	234,51	CREX1005	339,77
10" x 6"	273,0 x 168,3	CTST1006	416,07	CRST1006	96,96	CRXS1006	172,63	CREX1006	299,00
10" x 8"	273,0 x 219,1	CTST1008	409,01	CRST1008	90,82	CRXS1008	149,50	CREX1008	150,87
12" x 6"	323,8 x 168,3	CTST1206	712,25	CRST1206	203,86	CRXS1206	377,80	CREX1206	346,56
12" x 8"	323,8 x 219,1	CTST1208	684,04	CRST1208	139,96	CRXS1208	332,97	CREX1208	279,98
12" x 10"	323,8 x 273,0	CTST1210	676,99	CRST1210	129,11	CRXS1210	271,81	CREX1210	228,30
14" x 8"	355,6 x 219,1			CRST1408	448,49			CREX1408	679,54
14" x 10"	355,6 x 273,0	CTST1410	1.278,93	CRST1410	414,52	CRXS1410	564,01	CREX1410	543,63
14" x 12"	355,6 x 323,8	CTST1412	1.258,84	CRST1412	373,74	CRXS1412	536,83	CREX1412	489,27
16" x 8"	406,4 x 219,1			CRST1608	774,67			CREX1608	1236,76
16" x 10"	406,4 x 273,0	CTST1610	1.767,52	CRST1610	706,72	CRXS1610	733,90	CREX1610	937,76
16" x 12"	406,4 x 323,8	CTST1612	1.738,78	CRST1612	546,37	CRXS1612	699,92	CREX1612	842,62
16" x 14"	406,4 x 355,6	CTST1614	1.710,04	CRST1614	539,58	CRXS1614	686,33	CREX1614	774,67
18" x 16"	457,0 x 406,4	CTST1816	2.083,66	CRST1816	814,07				
20" x 16"	508,0 x 406,4	CTST2016	2.227,36	CRST2016	985,33				
20" x 18"	508,0 x 457,0	CTST2018	2.184,25	CRST2018	913,32				
24" x 18"	610,0 x 457,0	CTST2418	3.661,50	CRST2418	2.228,88				
24" x 20"	610,0 x 508,0	CTST2420	3.588,19	CRST2420	1.889,11				

**RACCORDI IN ACCIAIO A SALDARE NORMA ASME**

**CURVE ASTM A-420 WPL6 - ASME B 16.9**

DIMENSIONI		STD - LONG RADIUS	
Ø	Ø EXT.	COD.	€
1/2"	21,3	CL90460M	5,33
3/4"	26,9	CL90460T	5,67
1"	33,7	CL904601	6,01
1 1/4"	42,4	CL90461C	6,83
1 1/2"	48,3	CL90461M	8,06
2"	60,3	CL904602	10,45
2 1/2"	73,0	CL90462M	16,87
3"	88,9	CL904603	24,73
4"	114,3	CL904604	43,51
5"	141,3	CL904605	75,00
6"	168,3	CL904606	110,05
8"	219,1	CL904608	219,82
10"	273,0	CL904610	402,82


**FONDI BOMBATI ASTM A-420 WPL6 - ASME B 16.9**

DIMENSIONI		STD	
Ø	Ø EXT.	COD.	€
2"	60,3	CCX40602	9,15
2 1/2"	73,0	CCX4062M	11,41
3"	88,9	CCX40603	13,05
4"	114,3	CCX40604	21,59
5"	141,3	CCX40605	30,26
6"	168,3	CCX40606	43,17
8"	219,1	CCX40608	72,89
10"	273,0	CCX40610	129,79


**TI ASTM A-420 WPL6 - ASME B 16.9**

DIMENSIONI		STD	
Ø	Ø EXT.	COD.	€
1/2"	21,3	CTX4060M	10,52
3/4"	26,9	CTX4060T	10,59
1"	33,7	CTX40601	12,36
1 1/4"	42,4	CTX4061C	12,98
1 1/2"	48,3	CTX4061M	16,39
2"	60,3	CTX40602	21,52
2 1/2"	73,0	CTX4062M	37,02
3"	88,9	CTX40603	47,68
4"	114,3	CTX40604	74,05
5"	141,3	CTX40605	118,59
6"	168,3	CTX40606	161,69
8"	219,1	CTX40608	273,38
10"	273,0	CTX40610	500,51


**RIDUZIONI CONCENTRICHE ASTM A-420 WPL6 - ASME B 16.9**

DIMENSIONI		STD	
Ø	Ø EXT.	COD.	€
1" x 3/4"	33,4 x 26,7	CR46010T	15,78
1 1/4" x 1"	42,2 x 33,4	CR461C01	17,35
1 1/2" x 1 1/4"	48,3 x 42,2	CR461M1C	19,47
2" x 1"	60,3 x 33,4	CR460201	13,80
2" x 1 1/2"	60,3 x 48,3	CR46021M	11,41
2 1/2" x 2"	73,0 x 60,3	CR462M02	24,59
3" x 2"	88,9 x 60,3	CR460302	17,35
3" x 2 1/2"	88,9 x 73,0	CR46032M	16,80
4" x 2"	114,3 x 60,3	CR460402	26,03
4" x 3"	114,3 x 88,9	CR460403	22,41
5" x 3"	141,3 x 88,9	CR460503	41,40
5" x 4"	141,3 x 114,3	CR460504	37,02
6" x 4"	168,3 x 114,3	CR460604	54,37
6" x 5"	168,3 x 141,3	CR460605	49,66
8" x 6"	219,1 x 168,3	CR460806	78,76
10" x 6"	273,0 x 168,3	CR461006	140,92
12" x 10"	323,8 x 273,0	CR461210	184,10
14" x 10"	355,6 x 273,0	CR461410	614,24
14" x 12"	355,6 x 323,8	CR461412	555,43
16" x 10"	406,4 x 273,0	CR461610	1198,02
16" x 12"	406,4 x 323,8	CR461612	936,60
16" x 14"	406,4 x 355,6	CR461614	875,67



## FLANGE FORGIATE NORMA ASTM - ANSI B 16.5 (A105)

DIMENSIONI			WELDING NECK 150 Lbs.		WELDING NECK 300 Lbs.		SLIP - ON 150 Lbs.		SLIP - ON 300 Lbs.	
DN	Ø	mm.	COD.	€	COD.	€	COD.	€	COD.	€
15	1/2"	21,3	FN150015	16,39	FN300015	20,43	FO150015	11,96	FO300015	20,59
20	3/4"	26,9	FN150020	20,35	FN300020	26,29	FO150020	15,68	FO300020	22,81
25	1"	33,7	FN150025	22,41	FN300025	30,65	FO150025	17,42	FO300025	23,76
32	1 1/4"	42,4	FN150032	23,68	FN300032	37,07	FO150032	19,96	FO300032	25,66
40	1 1/2"	48,3	FN150040	28,04	FN300040	46,17	FO150040	21,78	FO300040	34,37
50	2"	60,3	FN150050	37,62	FN300050	52,59	FO150050	28,35	FO300050	45,14
65	2 1/2"	76,2	FN150065	49,90	FN300065	71,04	FO150065	37,38	FO300065	53,86
80	3"	88,9	FN150080	63,20	FN300080	97,50	FO150080	44,04	FO300080	74,61
100	4"	114,3	FN150100	92,51	FN300100	156,66	FO150100	66,84	FO300100	123,63
125	5"	139,7	FN150125	111,67	FN300125	210,51	FO150125	73,66	FO300125	152,86
150	6"	168,3	FN150150	139,87	FN300150	265,80	FO150150	90,68	FO300150	198,08
200	8"	219,1	FN150200	227,07	FN300200	408,04	FO150200	152,14	FO300200	303,34
250	10"	273,0	FN150250	334,78	FN300250	628,93	FO150250	201,41	FO300250	492,07
300	12"	323,9	FN150300	511,24	FN300300	908,58	FO150300	328,13	FO300300	663,14
350	14"	355,6	FN150350	776,95	FN300350	1.340,38	FO150350	396,40	FO300350	1.001,01
400	16"	406,4	FN150400	973,37	FN300400	1.721,25	FO150400	508,07	FO300400	1.387,11
450	18"	457,0	FN150450	1.218,41	FN300450	2.714,74	FO150450	561,21	FO300450	1.886,31
500	20"	508,0	FN150500	1.521,04	FN300500	3.490,34	FO150500	710,66	FO300500	2.039,72
600	24"	610,0	FN150600	2.076,47	FN300600	4.773,15	FO150600	1.011,94	FO300600	3.290,92

DIMENSIONI			BLIND 150 Lbs.		BLIND 300 Lbs.		SOCKET WELDING 150 Lbs.		WELDING NECK XS 150 Lbs.	
DN	Ø	mm.	COD.	€	COD.	€	COD.	€	COD.	€
15	1/2"	21,3	FB150015	12,04	FB300015	13,78	FW150015	14,65	FNX15015	10,85
20	3/4"	26,9	FB150020	13,78	FB300020	19,25	FW150020	16,47	FNX15020	15,13
25	1"	33,7	FB150025	15,92	FB300025	24,71	FW150025	18,30	FNX15025	18,30
32	1 1/4"	42,4	FB150032	18,45	FB300032	32,16	FW150032	21,46	FNX15032	23,92
40	1 1/2"	48,3	FB150040	21,62	FB300040	38,17	FW150040	23,05	FNX15040	28,27
50	2"	60,3	FB150050	29,46	FB300050	43,08	FW150050	31,20	FNX15050	40,95
65	2 1/2"	76,2	FB150065	43,32	FB300065	59,40			FNX15065	65,26
80	3"	88,9	FB150080	54,25	FB300080	81,26			FNX15080	74,21
100	4"	114,3	FB150100	79,20	FB300100	136,94			FNX15100	107,08
125	5"	139,7	FB150125	94,88	FB300125	179,94			FNX15125	132,18
150	6"	168,3	FB150150	129,73	FB300150	249,64			FNX15150	172,02
200	8"	219,1	FB150200	215,74	FB300200	406,85			FNX15200	279,58
250	10"	273,0	FB150250	316,88	FB300250	721,67				
300	12"	323,9	FB150300	475,04	FB300300	1.036,73				
350	14"	355,6	FB150350	638,59	FB300350	1.449,91				
400	16"	406,4	FB150400	846,65	FB300400	1.914,98				
450	18"	457,0	FB150450	1.136,12	FB300450	2.619,22				
500	20"	508,0	FB150500	1.419,26	FB300500	3.281,26				
600	24"	610,0	FB150600	2.056,11	FB300600	5.340,14				

**FLANGE FORGIATE NORMA EN 1092-1**

**FLANGIA PIANA SECONDO NORMA EN 1092-1 01**

DIMENSIONI			PIANA (TIPO 01) - MATERIALE P245GH			
			PN 6		PN 10	
DN	"	mm.	COD.	€	COD.	€
15	1/2"	21,3	FC010015	5,73	FC014015	8,56
20	3/4"	26,9	FC010020	6,36	FC014020	9,66
25	1"	33,7	FC010025	7,23	FC014025	9,97
32	1 1/4"	42,4	FC010032	11,78	FC014032	15,87
40	1 1/2"	48,3	FC010040	13,35	FC014040	19,40
50	2"	60,3	FC010050	14,45	FC016050	23,09
65	2 1/2"	76,1			F2576065	27,57
	2 1/2"	76,1	FC010065	18,14	FC016065	27,57
80	3"	88,9	FC010080	28,67	F2576080	31,18
					FC016080	31,18
90	3 1/2"	101,6			F2576101	36,44
100	4"	108,0			F2576108	36,44
	4"	114,3	FC010100	31,73	FC016100	36,44
125	5"	133,0			F2576133	46,18
	5"	139,7	FC010125	39,90	FC016125	46,18
150	6"	159,0			F2576159	60,79
	6"	168,3	FC010150	44,06	FC016150	60,79
175	7"	193,7			F2576175	77,05
200	8"	219,1	FC010200	63,70	FC011200	77,05
250	10"	273,0	FC010250	84,04	FC011250	105,95
300	12"	323,9	FC010300	112,31	FC011300	119,22
350	14"	355,6	FC010350	165,17	FC011350	188,57
400	16"	406,4	FC010400	198,47	FC011400	277,87
450	18"	457,0	FC010450	264,68	FC011450	322,56
500	20"	508,0	FC010500	410,69	FC011500	378,48
600	24"	610,0			FC011600	552,14
	24"	610,0			F2576600	*
700	28"	711,0			F2576700	*
800	32"	813,0			F2576800	*
900	36"	914,0			F2576900	*
1000	40"	1.016,0			F2576999	*

 Flangia non normata

 4 FORI

 Secondo DIN 2576

\* A richiesta

PIANA (TIPO 01) - MATERIALE P245GH

PN 16		PN 25		PN 40	
COD.	€	COD. DIN	€	COD. DIN	€
FC014015	8,56	FC014015	8,56	FC014015	8,56
FC014020	9,66	FC014020	9,66	FC014020	9,66
FC014025	9,97	FC014025	9,97	FC014025	9,97
FC014032	15,87	FC014032	15,87	FC014032	15,87
FC014040	19,40	FC014040	19,40	FC014040	19,40
FC016050	23,09	FC016050	23,09	FC016050	23,09
F2576065	27,57				
FC016065	27,57	FC014065	45,47	FC014065	45,47
FC016080	31,18	FC014080	61,42	FC014080	61,42
FC016100	36,44	FC014100	81,45	FC014100	81,45
FC016125	46,18	FC014125	111,06	FC014125	111,06
FC016150	60,79	FC014150	142,55	FC014150	142,55
FC016200	82,47	FC012200	191,79	FC014200	239,63
FC016250	127,71	FC012250	273,55	FC014250	380,13
FC016300	174,04	FC012300	352,49	FC014300	520,33
FC016350	265,39	FC012350	679,84	FC014350	943,11
FC016400	344,08	FC012400	727,59	FC014400	1.121,55
FC016450	425,37				
FC016500	590,70	FC012500	1.090,76	FC014500	1.313,74
FC016600	987,64				
F2502600	*				
F2502700	*				
F2502800	*				
F2502900	*				
F2502999	*				

\* A richiesta


**FLANGIA CIECA SECONDO EN 1092-1 05**

DIMENSIONI			CIECA (TIPO 05) - MATERIALE P245GH			
			PN 6		PN 10	
DN	"	mm.	COD.	€	COD.	€
15	1/2"	21,3	FC050015	9,74	FC054015	9,97
20	3/4"	26,9	FC050020	11,55	FC054020	11,78
25	1"	33,7	FC050025	12,96	FC054025	13,35
32	1 1/4"	42,4	FC050032	18,77	FC054032	19,09
40	1 1/2"	48,3	FC050040	21,21	FC054040	21,91
50	2"	60,3	FC050050	26,39	FC056050	26,86
65	2 1/2"	76,1			F2527065	31,73
	2 1/2"	76,1	FC050065	31,18	FC056065	31,73
80	3"	88,9	FC050080	39,74	FC056080	40,21
100	4"	114,3	FC050100	49,48	FC056100	50,27
125	5"	139,7	FC050125	71,08	FC056125	71,94
150	6"	168,3	FC050150	86,00	FC056150	86,94
200	8"	219,1	FC050200	141,53	FC051200	142,39
250	10"	273,0	FC050250	209,94	FC051250	212,53
300	12"	323,9	FC050300	271,04	FC051300	272,93
350	14"	355,6			FC051350	355,94
400	16"	406,4			FC051400	461,19
450	18"	457,0			FC051450	718,33
500	20"	508,0			FC051500	702,07
600	24"	610,0			FC051600	1.037,43
	24"	610,0			F5271600	*
700	28"	711,0			F5271700	*
800	32"	813,0			F5271800	*
900	36"	914,0			F5271900	*
1000	40"	1.016,0			F5271999	*

Flangia non normata

4 FORI

\* A richiesta

## CIECA (TIPO 05) - MATERIALE P245GH

PN 16		PN 25		PN 40	
COD.	€	COD.	€	COD.	€
FC054015	9,97	FC054015	9,97	FC054015	9,97
FC054020	11,78	FC054020	11,78	FC054020	11,78
FC054025	13,35	FC054025	13,35	FC054025	13,35
FC054032	19,09	FC054032	19,09	FC054032	19,09
FC054040	21,91	FC054040	21,91	FC054040	21,91
FC056050	26,86	FC054050	43,12	FC054050	43,12
F2527065	31,73				
FC056065	31,73	FC054065	57,81	FC054065	57,81
FC056080	40,21	FC054080	79,56	FC054080	79,56
FC056100	50,27	FC054100	101,87	FC054100	101,87
FC056125	71,94	FC054125	146,16	FC054125	146,16
FC056150	86,94	FC054150	195,64	FC054150	195,64
FC056200	134,07	FC052200	319,34	FC054200	394,58
FC056250	210,80	FC052250	479,88	FC054250	643,71
FC056300	295,94	FC052300	662,48	FC054300	919,78
FC056350	439,82	FC052350	973,58	FC054350	1.307,06
FC056400	592,90	FC052400	1.308,55	FC054400	1.898,63
FC056450	976,41				
FC056500	1.241,64	FC052500	2.013,37	FC054500	2.598,34
FC056600	1.978,97				
F2527600	*				
F2527700	*				
F2527800	*				
F2527900	*				
F2527999	*				

\* A richiesta


**FLANGIA COLLARINO SECONDO EN 1092-1 11**

DIMENSIONI			COLLARINO (TIPO 11)							
			PN 6				PN 10			
			MATERIALE P250GH		MATERIALE P245GH		MATERIALE P250GH		MATERIALE P245GH	
DN	"	mm.	COD.	€	COD.	€	COD.	€	COD.	€
15	1/2"	21,3	F2631015	10,13	FC110015	6,58	F2633015	19,50	FC114015	15,00
20	3/4"	26,9	F2631020	15,32	FC110020	9,95	F2633020	23,59	FC114020	18,14
25	1"	33,7	F2631025	19,32	FC110025	12,56	F2633025	27,36	FC114025	21,05
32	1 1/4"	42,4	F2631032	28,12	FC110032	18,28	F2633032	33,29	FC114032	25,60
40	1 1/2"	48,3	F2631040	30,47	FC110040	19,81	F2633040	36,25	FC114040	27,88
50	2"	60,3	F2631050	32,76	FC110050	21,37	F2633050	38,19	FC116050	29,37
65	2 1/2"	76,1	F2631065	34,92	FC110065	24,05	F2633065	45,84	FC116065	35,26
80	3"	88,9	F2631080	47,30	FC110080	34,69	F2633080	55,03	FC116080	42,33
90	3 1/2"	108,0					F2633108	*		
100	4"	114,3	F2631100	56,55	FC110100	39,96	F2633100	64,63	FC116100	49,72
125	5"	133,0					F2633133	*		
125	5"	139,7	F2631125	78,28	FC110125	52,19	F2633125	90,67	FC116125	69,74
150	6"	159,0					F2633159	*		
150	6"	168,3	F2631150	95,57	FC110150	66,37	F2633150	111,50	FC116150	85,77
200	8"	219,1	F2631200	160,08	FC110200	105,12	F2632200	174,19	FC111200	133,99
250	10"	273,0	F2631250	199,00	FC110250	145,94	F2632250	228,71	FC111250	176,97
300	12"	323,9	F2631300	216,39	FC110300	158,69	F2632300	265,47	FC111300	204,96
350	14"	355,6	F2631350	309,73	FC110350	209,44	F2632350	447,21	FC111350	344,97
400	16"	406,4	F2631400	382,15	FC110400	239,81	F2632400	541,14	FC111400	416,72
450	18"	457,0					F2632450	*		
500	20"	508,0	F2631500	614,71	FC110500	385,89	F2632500	*	FC111500	561,87
600	24"	609,0							FC111600	*
700	28"	711,0								
800	32"	813,0								
900	36"	914,0								
1000	40"	1.016,0								

 Flangia non normata

 4 FORI

 Secondo DIN 2633

 Secondo DIN 2635

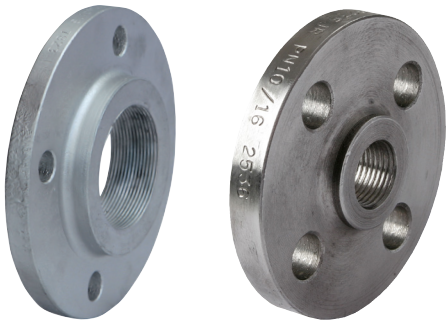
\* A richiesta



**COLLARINO (TIPO 11)**

PN 16		PN 25		PN 40							
MATERIALE P250GH		MATERIALE P245GH		MATERIALE P250GH		MATERIALE P245GH		MATERIALE P250GH		MATERIALE P245GH	
COD.	€	COD.	€	COD.	€	COD.	€	COD.	€	COD.	€
F2633015	19,50	FC114015	15,00	F2635015	19,50	FC114015	15,00	F2635015	19,50	FC114015	15,00
F2633020	23,59	FC114020	18,14	F2635020	23,59	FC114020	18,14	F2635020	23,59	FC114020	18,14
F2633025	27,36	FC114025	21,05	F2635025	27,36	FC114025	21,05	F2635025	27,36	FC114025	21,05
F2633032	33,29	FC114032	25,60	F2635032	33,29	FC114032	25,60	F2635032	33,29	FC114032	25,60
F2633040	36,25	FC114040	27,88	F2635040	36,25	FC114040	27,88	F2635040	36,25	FC114040	27,88
F2633050	38,19	FC116050	29,37	F2635050	44,42	FC114050	31,73	F2635050	44,42	FC114050	31,73
F2633065	45,84	FC116065	35,26	F2635065	59,71	FC114065	42,65	F2635065	59,71	FC114065	42,65
F2633080	55,03	FC116080	42,33	F2635080	76,97	FC114080	54,98	F2635080	76,97	FC114080	54,98
F2633108	*										
F2633100	64,63	FC116100	49,72	F2635100	106,00	FC114100	75,71	F2635100	106,00	FC114100	75,71
F2633133	*										
F2633125	90,67	FC116125	69,74	F2635125	145,47	FC114125	103,91	F2635125	145,47	FC114125	103,91
F2633159	*										
F2633150	111,50	FC116150	85,77	F2635150	191,32	FC114150	137,37	F2635150	191,32	FC114150	137,37
F2633200	174,19	FC116200	127,39	F2634200	*			F2635200	357,59	FC114200	247,24
F2633250	243,00	FC116250	188,02	F2634250	*			F2635250	592,19	FC114250	409,90
F2633300	320,60	FC116300	247,40	F2634300	*			F2635300	817,60	FC114300	546,56
F2633350	586,07	FC116350	451,53	F2634350	*			F2635350	*		
F2633400	747,39	FC116400	575,86	F2634400	*			F2635400	*		
F2633450	*	FC116450	716,21	F2634450	*			F2635450	*		
F2633500	*	FC116500	912,95	F2634500	*			F2635500	*		
F2633600	*	FC116600	*								
F2633700	*										
F2633800	*										
F2633900	*										
F2633999	*										

\* A richiesta



DIMENSIONI			FLANGIA FILETTATA EN 1092-1 TIPO 13 - MATERIALE P245GH							
			PN 6 NERA		PN 16 NERA		PN 16 ZINCATA		PN 40 NERA	
DN	"	mm.	COD.	€	COD.	€	COD.	€	COD.	€
15	1/2"	21,3	FC130015	10,05	FC134015	11,47			FC134015	11,47
20	3/4"	26,9	FC130020	12,41	FC134020	15,94			FC134020	15,94
25	1"	33,7	FC130025	14,53	FC134025	17,51			FC134025	17,51
32	1 1/4"	42,4	FC130032	18,14	FC134032	24,98			FC134032	24,98
40	1 1/2"	48,3	FC130040	20,81	FC134040	26,15			FC134040	26,15
50	2"	60,3	FC130050	22,70	FC136050	29,22	F566G050	73,91		
65	2 1/2"	76,1	FC130065	28,43	FC136065	37,78	F566G065	88,91		
80	3"	88,9	FC130080	41,78	FC136080	43,51	F566G080	115,06		
80	3"	88,9								
100	4"	114,3	FC130100	46,81	FC136100	52,46	F566G100	125,04		
125	5"	139,7			FC136125	81,76	F566G125	171,53		
150	6"	168,3			FC136150	104,77	F566G150	221,48		
200	8"	219,1								
200	8"	219,1								
250	10"	273,0								
300	12"	323,9								

DIMENSIONI			FLANGIA FILETTATA DIN 2566			
			PN 16 NERA		PN 16 ZINCATA	
DN	"	mm.	COD.	€	COD.	€
15	1/2"	21,3	F5660015	15,63	F566G015	18,61
20	3/4"	26,9	F5660020	23,48	F566G020	27,65
25	1"	33,7	F5660025	29,61	F566G025	33,46
32	1 1/4"	42,4	F5660032	41,15	F566G032	48,77
40	1 1/2"	48,3	F5660040	45,95	F566G040	54,11
50	2"	60,3	F5660050	62,60	F566G050	73,91
65	2 1/2"	76,1	F5660065	73,91	F566G065	88,91
80	3"	88,9	F5660080	95,90	F566G080	115,06
80	3"	88,9				
100	4"	114,3	F5660100	103,91	F566G100	125,04
125	5"	139,7	F5660125	152,37	F566G125	171,53
150	6"	168,3	F5660150	197,61	F566G150	221,48
200	8"	219,1				
200	8"	219,1				
250	10"	273,0				
300	12"	323,9				

DIMENSIONI			FLANGIA PER IRRIGAZIONE		FLANGIA LIBERA SECONDO DIN 2642		FLANGIA FILETTATA SECONDO DIN 2573		FLANGIA FILETTATA SECONDO DIN 2576	
					PN 10 ZINCATA		PN 6 ZINCATA		PN 10/16 ZINCATA	
DN	"	mm.	COD.	€	COD.	€	COD.	€	COD.	€
15	1/2"	21,3					F573O015	4,45	F576O015	7,85
20	3/4"	26,9					F573O020	6,50	F576O020	11,20
25	1"	33,7			F2642025	7,85	F573O025	8,00	F576O025	13,20
32	1 1/4"	42,4			F2642032	10,50	F573O032	12,80	F576O032	19,20
40	1 1/2"	48,3	F576R040	8,95	F2642040	12,10	F573O040	15,05	F576O040	22,05
50	2"	60,3	F576R050	9,40	F2642050	13,80	F573O050	16,55	F576O050	29,35
65	2 1/2"	76,1	F576R065	11,45	F2642065	16,45	F573O065	20,50	F576O065	32,50
80	3"	88,9	F576R080	13,55	F2642080	20,90	F573O080	32,25	F576O080 PN 10	41,15
80	3"	88,9	F576R816	13,55					F576O086 PN 16	41,15
100	4"	114,3	F576R100	13,70	F2642100	23,10	F573O100	37,45	F576O100	43,65
125	5"	139,7	F576R125	16,95	F2642125	28,60	F573O125	49,85	F576O125	59,05
150	6"	168,3	F576R150	23,80	F2642150	35,25	F573O150	38,95	F576O150	71,15
200	8"	219,1	F576R200	31,10	F2642200	46,95				
200	8"	219,1	F576R216	31,10						
250	10"	273,0	F576R250	39,25	F2642250	64,80				
300	12"	323,9	F576R300	43,75	F2642300	87,95				

Con 8 FORI PN 16

Con 12 FORI PN 16

DIMENSIONI			FLANGE ZINCATE PER CARTELLE IN POLIETILENE							
			SERIE NORMALE PN 10		SERIE LEGGERA PN 10		SERIE NORMALE PN 16		SERIE LEGGERA PN 16	
DN	PE Ø EXT (mm)	PVC Ø EXT (mm)	COD.	€	COD.	€	COD.	€	COD.	€
15	20		FPE10015	5,15			FPE10015	5,15		
20	25		FPE10020	7,10			FPE10020	7,10		
25	32		FPE10025	8,30			FPE10025	8,30		
32	40		FPE10032	11,20			FPE10032	11,20		
40	50		FPE10040	14,80	FPR10040	8,55	FPE10040	14,80	FPR10040	8,55
50		50								
50	63	63	FPE10050	15,85	FPR10050	11,70	FPE10050	15,85	FPR10050	11,70
65		63								
65	75	75	FPE10065	20,50	FPR10065	14,45	FPE10065	20,50	FPR10065	14,45
80	90	90	FPE10080	22,35	FPR10080	14,90	FPE10080	22,35	FPR10080	14,90
100	110	110	FPE10100	27,40	FPR10100	20,15	FPE10100	27,40	FPR10100	20,15
100	125		FPE10101	23,70	FPR10101	18,85	FPE10101	23,70	FPR10101	18,85
125	125	125	FPE10125	39,55	FPR10125	28,35	FPE10125	39,55	FPR10125	28,35
125	140	140	FPE10126	33,15	FPR10126	23,95	FPE10126	33,15	FPR10126	23,95
150	160	160	FPE10150	43,40	FPR10150	31,25	FPE10150	43,40	FPR10150	31,25
150	180		FPE10151	39,80	FPR10151	28,75	FPE10151	39,80	FPR10151	28,75
200	200	200	FPE10200	58,25	FPR10200	41,80	FPE16200	59,85	FPR16200	42,35
200	225						FPE16201	54,90	FPR16201	40,65
250	250	250	FPE10250	75,30	FPR10250	64,35	FPE16250	81,45	FPR16250	70,00
300	315	315	FPE10300	89,10	FPR10300	82,15	FPE16300	109,80	FPR16300	93,95
350	355		FPE10350	130,30	FPR10350	121,70	FPE16350	171,80	FPR16350	135,80
400	400		FPE10400	174,10	FPR10400	151,95	FPE16400	192,85	FPR16400	157,50
450	450				FPR10450	165,55			FPR16450	173,85
500	500				FPR10500	176,45			FPR16500	207,35
600	560				FPR10600	253,70				
600	630				FPR10601	221,95				
700	710				FPR10700	269,40				
800	800				FPR10800	398,40				



## GUARNIZIONI IN GOMMA



Tipo 1

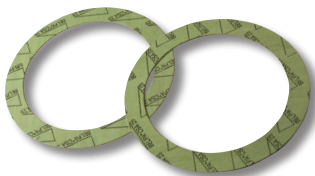
Tipo 2

Secondo Norma EN 1514-1 (Tipo 1) e DIN 2690 (Tipo 2).  
Spessore 3 mm.  
Temperatura di lavoro:  
- SBR: da -10° C a 100° C.  
- NBR: da -10° C a 80° C.

■ PN 10   
 ■ PN 10/16   
 ■ PN 16

DN	TIPO 1		TIPO 1 SBR	TIPO 1 NBR		TIPO 2 SBR		
	N° FORI	Icona		COD.	€	COD.	€	COD.
25	4	10	JBG10025	0,63	JBG1N025	1,01	JBG20025	0,32
32	4	10	JBG10032	0,82	JBG1N032	1,39	JBG20032	0,38
40	4	10	JBG10040	1,01	JBG1N040	1,58	JBG20040	0,44
50	4	10	JBG10050	1,20	JBG1N050	2,02	JBG20050	0,63
65	8	10	JBG10065	1,45	JBG1N065	2,15	JBG20065	0,76
80	8	10	JBG10080	1,64	JBG1N080	2,40	JBG20080	0,82
80		10					JBG20086	0,82
100	8	10	JBG10100	1,77	JBG1N100	2,85	JBG20100	0,89
125	8	10	JBG10125	2,15	JBG1N125	3,10	JBG20125	1,39
150	8	10	JBG10150	2,66	JBG1N150	4,43	JBG20150	1,52
175	8	10	JBG10175	3,23			JBG20175	1,77
200	8	10	JBG10200	3,48	JBG1N200	5,44	JBG20200	2,02
200	12	10	JBG10216	3,48			JBG20206	2,02
250	12	10	JBG10250	4,68			JBG20250	2,72
250	12	10	JBG10256	4,68			JBG20256	2,72
300	12	10	JBG10300	6,01			JBG20300	3,92
300	12	10	JBG10306	6,01			JBG20306	3,92
350	16	5	JBG10350	7,34			JBG20350	5,88
350	16	5	JBG10356	7,34			JBG20356	5,88
400	16	5	JBG10400	8,67			JBG20400	6,77
400	16	5	JBG10406	8,67			JBG20406	6,77
450	20	5	JBG10450	9,80			JBG20450	8,22
450	20	5	JBG10456	9,80			JBG20456	8,22
500	20	5	JBG10500	12,08			JBG20500	10,25
500	20	5	JBG10506	12,08			JBG20506	10,25

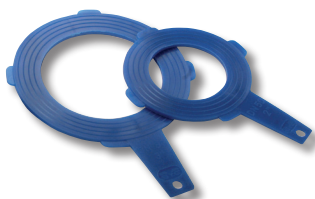
## GUARNIZIONI ECOLOGICHE



Prodotta con fibre organiche e minerali -  
**ESENTE AMIANTO.**  
Spessore 1.5 mm.  
Temperatura massima di esercizio 150° C.  
Pressione massima di esercizio 35 Kgs/cm.  
Applicazioni: Acqua,aria,oli vegetali ed animali,solventi.

GUARNIZIONI PER FLANGE SENZA FORI DIN 2690					
DN	Ø EXT.	Ø INT.	Icona	COD.	€
15	50	20	25	JBKSA015	0,38
20	60	25	25	JBKSA020	0,38
25	70	30	25	JBKSA025	0,44
32	82	40	25	JBKSA032	0,51
40	92	50	25	JBKSA040	0,63
50	107	60	25	JBKSA050	0,76
65	127	77	25	JBKSA065	0,95
80	142	90	25	JBKSA080	1,14
100	162	114	25	JBKSA100	1,52
125	192	140	25	JBKSA125	1,96
150	218	168	25	JBKSA150	2,53
200	273	220	25	JBKSA200	3,54
250	328	273	10	JBKSA250	5,12
300	378	325	10	JBKSA300	7,08
350	438	368	10	JBKSA350	9,99
400	490	420	5	JBKSA400	12,14
500	595	520	5	JBKSA500	19,10
600	680	620	1	JBKSA600	35,29

## GUARNIZIONI SINTETICA





Il suo disegno esclusivo consente una perfetta installazione su tutti i tipi di flange.  
Prodotta in Polietilene.  
Temperatura massima di esercizio 60° C. Pressione massima di esercizio 30 Kgs/cm.  
Applicazioni:Resistenti ad acidi diluiti, alcali, soluzioni saline, acqua, alcool, esteri, oli. Sono impermeabili,non degradabili,non aggredibili dalla corrosione.

DN	Ø	COD.	€
40	1 1/2"	JBP00040	2,85
50	2"	JBP00050	3,00
65	2 1/2"	JBP00065	3,15
80	3"	JBP00080	3,65
100	4"	JBP00100	3,80
125	5"	JBP00125	4,20
150	6"	JBP00150	4,60
200	8"	JBP00200	7,05
250	10"	JBP00250	13,90
300	12"	JBP00300	21,80
400	16"	JBP00400	34,95
500	20"	JBP00500	62,55

## BULLONI PER FLANGE DIN 931 - 6.8 - Zincati



MISURA	LUNGHEZZA		COD.	€ 100 UNITÀ.
M8	60	100	T0310860	23,64
M10	50	100	T0311050	34,94
M10	60	100	T0311060	39,33
M10	70	100	T0311070	45,18
M10	80	100	T0311080	50,54
M10	90	100	T0311090	55,66
M10	100	100	T0311010	60,94
M10	120	100	T0311012	72,48
M12	40	100	T0311240	41,76
M12	50	100	T0311250	49,48
M12	55	100	T0311255	53,22
M12	60	100	T0311260	56,63
M12	70	100	T0311270	63,62
M12	80	100	T0311280	71,18
M12	90	100	T0311290	78,81
M12	100	100	T0311210	85,72
M12	110	50	T0311211	93,19
M12	120	50	T0311212	99,61
M12	140	50	T0311214	113,99
M14	50	100	T0311450	69,88
M14	55	100	T0311455	74,99
M14	60	50	T0311460	80,60
M14	70	50	T0311470	89,54
M14	80	50	T0311480	99,53
M14	90	50	T0311490	108,31
M14	100	50	T0311410	118,38
M14	120	50	T0311412	139,83
M14	130	50	T0311413	147,96
M14	140	50	T0311414	157,46
M16	35	100	T0311635	72,56
M16	40	50	T0311640	79,79
M16	50	50	T0311650	91,33
M16	55	50	T0311655	97,66
M16	60	50	T0311660	104,57
M16	65	50	T0311665	111,72
M16	70	25	T0311670	118,54
M16	75	25	T0311675	124,80
M16	80	25	T0311680	131,79
M16	90	25	T0311690	146,17
M16	100	25	T0311610	158,68
M16	110	25	T0311611	171,68
M16	120	25	T0311612	185,33
M16	130	25	T0311613	195,89
M16	140	25	T0311614	209,22
M16	150	25	T0311615	222,79
M16	160	25	T0311616	245,70
M16	180	25	T0311618	273,98
M16	200	25	T0311620	320,29

MISURA	LUNGHEZZA		COD.	€ 100 UNITÀ.
M18	50	50	T0311850	114,24
M18	60	50	T0311860	137,31
M18	70	50	T0311870	154,38
M18	80	50	T0311880	169,98
M18	90	25	T0311890	187,61
M18	100	25	T0311810	204,67
M18	110	25	T0311811	221,65
M18	120	25	T0311812	238,06
M18	130	25	T0311813	251,88
M18	140	25	T0311814	269,51
M18	150	25	T0311815	286,57
M18	160	25	T0311816	313,63
M18	180	25	T0311818	349,54
M18	200	25	T0311820	417,71
M20	50	25	T0312050	137,23
M20	60	25	T0312060	167,86
M20	70	25	T0312070	196,46
M20	80	25	T0312080	217,18
M20	90	25	T0312090	259,51
M20	100	25	T0312010	281,45
M20	110	25	T0312011	304,28
M20	120	25	T0312012	326,87
M20	130	25	T0312013	346,37
M20	140	25	T0312014	349,46
M20	150	25	T0312015	358,80
M20	160	25	T0312016	393,66
M20	180	20	T0312018	435,83
M20	200	20	T0312020	479,94
M22	70	25	T0312270	257,89
M22	80	25	T0312280	285,43
M22	90	25	T0312290	313,14
M22	100	20	T0312210	340,19
M22	110	10	T0312211	367,66
M24	100	10	T0312410	433,06
M24	110	10	T0312411	466,54
M24	120	10	T0312412	499,61
M24	130	10	T0312413	523,09
M24	140	10	T0312414	555,34
M24	150	10	T0312415	597,35
M24	160	10	T0312416	638,71
M24	180	10	T0312418	705,98
M24	200	10	T0312420	773,18
M27	120	10	T0312712	702,33
M30	130	10	T0313013	929,66
M33	140	5	T0313314	1.300,98

**DADI ESAGONALI  
DIN 934 - 8 - Zincati**


MISURA		COD.	€ 100 UNITÀ
M4	250	T9340004	1,06
M5	250	T9340005	1,22
M6	150	T9340006	1,71
M8	125	T9340008	3,82
M10	100	T9340010	7,48
M12	100	T9340012	12,68
M14	50	T9340014	15,76
M16	50	T9340016	21,21
M18	25	T9340018	33,48
M20	25	T9340020	38,76
M22	20	T9340022	54,60
M24	10	T9340024	77,35
M27	10	T9340027	125,69
M30	10	T9340030	168,43
M33	5	T9340033	224,41

**RONDELLA PIANA  
DIN 125 - Zincata**


MISURA		COD.	€ 100 UNITÀ
M4	300	T1250004	0,57
M5	300	T1250005	0,73
M6	150	T1250006	1,06
M8	125	T1250008	1,79
M10	100	T1250010	3,66
M12	100	T1250012	5,93
M14	70	T1250014	8,86
M16	70	T1250016	9,91
M18	50	T1250018	14,22
M20	50	T1250020	15,76
M22	50	T1250022	17,14
M24	50	T1250024	31,69
M27	50	T1250027	41,76
M30	50	T1250030	53,06
M33	30	T1250033	73,78

**BARRA FILETTATA  
1.000 mm. - DIN 975 - 4.8 - Zincata**


MISURA		COD.	€ 100 UNITÀ
M4	100	T9750004	75,40
M5	100	T9750005	76,78
M6	50	T9750006	91,16
M8	25	T9750008	158,68
M10	25	T9750010	255,53
M12	20	T9750012	347,43
M14	15	T9750014	506,51
M16	10	T9750016	665,36
M18	5	T9750018	817,05
M20	5	T9750020	1.036,59
M22	5	T9750022	1.287,73
M24	5	T9750024	1.552,36
M27	4	T9750027	2.170,35
M30	2	T9750030	2.221,05

**RONDELLA PIANA LARGA  
DIN 9021 - Zincata**


MISURA		COD.	€ 100 UNITÀ
M6	100	T9021006	3,09
M8	100	T9021008	6,99
M10	50	T9021010	13,73
M12	40	T9021012	29,09
M14	40	T9021014	41,60
M16	30	T9021016	47,86
M18	30	T9021018	88,64
M20	30	T9021020	97,26



**BARILOTTI IN ACCIAIO SCANALATI/  
FILETTATI / A SALDARE  
ACCIAIO EN 10255 (M/S195T)**



Ø	L mm.		TIPO	COD.	€
1 1/2"	70	50 10	RR-G	BRRG0770	5,77
2"	70	33 3	RR-G	BRRG0870	8,42
2 1/2"	70	12 2	RR-G	BRRG0B70	12,26
3"	70	12 2	RR-G	BRRG0A70	14,78
1"	80	100 10	RR-G	BRRG0580	3,78
1 1/4"	80	60 10	RR-G	BRRG0680	5,10
1 1/2"	80	50 10	RR-G	BRRG0780	5,83
2"	80	30 3	RR-G	BRRG0880	8,15
2 1/2"	80	12 2	RR-G	BRRG0B80	12,73
3"	80	12 2	RR-G	BRRG0A80	15,05
3"	110	9 1	RR-G	BRRGA110	18,43
4"	150	4 1	RR-G	BRRGC150	31,82
2"	100	24 3	RS-N	BRSN8100	10,41
2 1/2"	100	12 2	RS-N	BRSNB100	15,18
3"	100	10 1	RS-N	BRSNA100	18,43
4"	100	4 1	RS-N	BRSNC100	23,27

RR-G = BARILOTTO ZINCATO SCANALATO / FILETTATO  
RS-N = BARILOTTO NERO SCANALATO / SALDARE

**VITE DI ALLUNGAMENTO  
CONICA-CILINDRICA DIN 2981  
ZINCATI ACCIAIO ST 37,2**



Ø	LUNGHEZZA		COD.	€
3/8"	100	230 10	B5322100	2,45
1/2"	100	140 10	B5323100	2,59
3/4"	120	70 10	B5324120	3,45
1"	140	50 10	B5325140	3,58
1 1/4"	150	25 5	B5326150	6,76
1 1/2"	150	20 5	B5327150	8,35
2"	170	12 4	B5328170	10,87

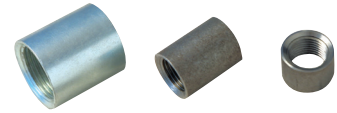
**TRONCHETTI NERI  
FILETTATURA CONICA ISO 7/1 (EN 10226-1) DIN 2982 (EN 10241)  
NERI ACCIAIO ST 37,2**



Ø	LUNGHEZZA		COD.	€
3/8"	100	230 10	B6002100	1,18
3/8"	150	120 10	B6002150	1,52
3/8"	200	80 10	B6002200	1,99
3/8"	250	60 10	B6002250	2,32
3/8"	300	80 10	B6002300	2,52
1/2"	100	140 10	B6003100	1,01
1/2"	150	100 10	B6003150	1,42
1/2"	200	70 10	B6003200	1,72
1/2"	250	70 10	B6003250	2,39
1/2"	300	70 10	B6003300	2,59
3/4"	100	100 10	B6004100	1,26
3/4"	150	60 10	B6004150	1,66
3/4"	200	50 10	B6004200	2,32
3/4"	250	40 10	B6004250	2,65
3/4"	300	50 10	B6004300	3,05
1"	100	60 10	B6005100	1,72
1"	150	40 10	B6005150	2,39
1"	200	30 10	B6005200	3,18
1"	250	30 10	B6005250	3,98
1"	300	30 10	B6005300	4,44
1 1/4"	100	40 10	B6006100	2,39
1 1/4"	150	25 5	B6006150	3,25
1 1/4"	200	20 5	B6006200	3,98
1 1/4"	250	15 5	B6006250	5,17
1 1/4"	300	20 5	B6006300	6,10
1 1/2"	100	30 5	B6007100	2,72
1 1/2"	150	20 5	B6007150	3,84
1 1/2"	200	15 5	B6007200	4,71
1 1/2"	250	10 5	B6007250	5,97
1 1/2"	300	20 5	B6007300	7,09

Ø	LUNGHEZZA		COD.	€
2"	60	30 5	B6000860	3,38
2"	100	20 5	B6008100	3,41
2"	150	12 4	B6008150	4,84
2"	200	12 4	B6008200	6,10
2"	250	9 3	B6008250	7,76
2"	300	12 4	B6008300	9,01
2 1/2"	100	12 4	B600A100	6,43
2 1/2"	150	6 3	B600A150	7,69
2 1/2"	200	6 3	B600A200	9,15
2 1/2"	250	4 4	B600A250	11,73
2 1/2"	300	8 4	B600A300	13,19
3"	100	8 2	B600B100	7,23
3"	150	6 2	B600B150	9,28
3"	200	4 2	B600B200	11,47
3"	250	4 2	B600B250	14,32
3"	300	6 2	B600B300	18,10
4"	100	4 2	B600C100	12,06
4"	150	3 1	B600C150	15,71
4"	200	6 2	B600C200	18,89
4"	250	4 2	B600C250	24,06
4"	300	3 1	B600C300	27,64

## MANICOTTI E MEZZI MANICOTTI FILETTATURA CILINDRICA ISO 7/1 (EN 10226-1) DIN 2986 (EN 10241) ACCIAIO ST 37,2



MANICOTTI						
Ø	LUNGHE.		COD. NERI	€	COD. ZINCATI	€
1/8"	17	1000 10	M1100000	0,81	M5100000	0,95
1/4"	25	500 10	M1100001	0,81	M5100001	0,96
3/8"	26	400 10	M1100002	0,85	M5100002	1,05
1/2"	34	200 10	M1100003	1,01	M5100003	1,14
1/2"	50	170 10	M1100350	*		
1/2"	60	170 10	M1100063	*		
3/4"	36	160 10	M1100004	1,32	M5100004	1,44
3/4"	48	120 10			M5100484	*
1"	43	100 10	M1100005	1,82	M5100005	2,12
1 1/4"	48	60 10	M1100006	2,58	M5100006	3,18
1 1/2"	48	50 10	M1100007	3,18	M5100007	4,24
2"	56	24 4	M1100008	4,70	M5100008	6,14
2 1/2"	65	18 3	M110000A	8,41	M510000A	10,68
3"	71	24 1	M110000B	10,91	M510000B	13,26
4"	83	12 1	M110000D	20,98	M510000D	25,83
5"	92	6 1	M110000F	36,14	M510000F	44,09
6"	92	4 1	M110000G	67,88	M510000G	81,36

MEZZI MANICOTTI					
Ø	LUNGHEZZA		COD. NERI	€	
1/4"	11	800 10	M1400001	0,75	
3/8"	12	800 10	M1400002	0,88	
1/2"	15	400 10	M1400003	1,00	
3/4"	17	300 10	M1400004	1,38	
1"	19,5	180 10	M1400005	1,89	
1 1/4"	22	120 10	M1400006	2,65	
1 1/2"	22	90 10	M1400007	3,11	
2"	26	48 8	M1400008	4,62	
2 1/2"	30,5	36 12	M140000A	7,65	
3"	34	24 12	M140000B	9,17	
4"	40	10 2	M140000D	17,65	

## VITI DI PROLUNGAMENTO (BARILOTTI) FILETTATURA CONICA ISO 7/1 (EN 10226-1) DIN 2982 (EN 10241)



Ø	LUNGHEZZA		COD. NERI	€	COD. ZINCATI	€
3/8"	40	450 10	B1100240	1,33	B5100240	1,52
3/8"	50	250 10	B1100250	1,29	B5100250	1,86
3/8"	60	320 10	B1100260	1,33	B5100260	1,35
3/8"	80	280 10	B1100280	1,38	B5100280	1,42
3/8"	100	230 10	B1102100	1,39	B5102100	1,52
3/8"	120	200 10	B1102120	1,59	B5102120	1,79
3/8"	140	180 10	B1102140	1,66	B5102140	2,12
3/8"	150	120 10	B1102150	1,72	B5102150	2,12
3/8"	160	90 10	B1102160	1,86	B5102160	2,19
3/8"	180	90 10	B1102180	1,92	B5102180	2,25
3/8"	200	80 10	B1102200	1,99	B5102200	2,39
3/8"	250	60 10	B1102250	2,78	B5102250	3,38
3/8"	300	80 10	B1102300	3,38	B5102300	4,11
3/8"	400	60 10	B1102400	3,98	B5102400	5,04
3/8"	500	60 10	B1102500	4,77	B5102500	6,03
1/2"	40	370 10	B1100340	1,05	B5100340	1,35
1/2"	50	300 10	B1100350	1,11	B5100350	1,46
1/2"	60	250 10	B1100360	1,19	B5100360	1,13
1/2"	80	210 10	B1100380	1,25	B5100380	1,33
1/2"	100	140 10	B1103100	1,35	B5103100	1,39
1/2"	120	120 10	B1103120	1,52	B5103120	1,66
1/2"	140	120 10	B1103140	1,59	B5103140	1,79
1/2"	150	80 10	B1103150	1,66	B5103150	1,86
1/2"	160	100 10	B1103160	1,86	B5103160	2,19
1/2"	180	100 10	B1103180	1,99	B5103180	2,39
1/2"	200	70 10	B1103200	1,99	B5103200	2,45
1/2"	250	70 10	B1103250	3,18	B5103250	3,05
1/2"	300	70 10	B1103300	3,31	B5103300	3,78
1/2"	400	50 5	B1103400	4,24	B5103400	4,77
1/2"	500	40 5	B1103500	5,10	B5103500	5,70
1/2"	600	1			B5103600	7,16
1/2"	800	1			B5103800	9,01
1/2"	1000	1	B1131000	*	B5131000	11,00
1/2"	1500	1			B5131500	17,37
1/2"	2000	1			B5132000	23,40

Ø	LUNGHEZZA		COD. NERI	€	COD. ZINCATI	€
3/4"	40	220 10	B1100440	1,19	B5100440	1,59
3/4"	50	180 10	B1100450	1,22	B5100450	1,66
3/4"	60	150 10	B1100460	1,27	B5100460	1,42
3/4"	80	120 10	B1100480	1,31	B5100480	1,52
3/4"	100	100 10	B1104100	1,39	B5104100	1,86
3/4"	120	70 10	B1104120	1,79	B5104120	1,92
3/4"	140	70 10	B1104140	2,05	B5104140	1,99
3/4"	150	60 10	B1104150	2,12	B5104150	2,12
3/4"	160	60 10	B1104160	2,25	B5104160	2,45
3/4"	180	60 10	B1104180	2,19	B5104180	2,59
3/4"	200	50 10	B1104200	2,25	B5104200	2,72
3/4"	250	40 10	B1104250	3,38	B5104250	3,65
3/4"	300	50 10	B1104300	3,91	B5104300	4,64
3/4"	400	30 5	B1104400	4,77	B5104400	5,97
3/4"	500	30 5	B1104500	5,77	B5104500	7,09
3/4"	600	1			B5104600	8,82
3/4"	800	1			B5104800	10,94
3/4"	1000	1			B5141000	13,19
3/4"	1500	1			B5141500	20,81
3/4"	2000	1			B5142000	25,98
1"	40	140 10	B1100540	1,59	B5100540	1,99
1"	50	140 10	B1100550	1,66	B5100550	1,99
1"	60	120 10	B1100560	1,79	B5100560	1,99
1"	80	80 10	B1100580	1,86	B5100580	2,12
1"	100	60 10	B1105100	1,99	B5105100	2,39
1"	120	60 10	B1105120	2,25	B5105120	2,72
1"	140	50 10	B1105140	2,45	B5105140	2,98
1"	150	40 10	B1105150	2,59	B5105150	3,05
1"	160	40 10	B1105160	2,78	B5105160	3,58
1"	180	40 10	B1105180	2,98	B5105180	3,98
1"	200	30 10	B1105200	3,25	B5105200	3,78
1"	250	30 10	B1105250	4,51	B5105250	5,37
1"	300	30 10	B1105300	5,37	B5105300	6,56
1"	400	15 5	B1105400	6,50	B5105400	8,42
1"	500	10 5	B1105500	8,15	B5105500	10,01
1"	600	1			B5105600	12,46
1"	800	1			B5105800	15,58
1"	1000	1			B5151000	18,56
1"	1500	1			B5151500	29,50
1"	2000	1			B5152000	39,84

\* A richiesta

**VITI DI PROLUNGAMENTO (BARILOTTI)  
FILETTATURA CONICA ISO 7/1 (EN 10226-1)  
DIN 2982 (EN 10241)**



Ø	LUNGHEZZA		COD. NERI	€	COD. ZINCATI	€
1 1/4"	40	80 10	B1100640	2,32	B5100640	2,45
1 1/4"	50	60 10	B1100650	2,25	B5100650	2,65
1 1/4"	60	60 10	B1100660	2,45	B5100660	2,52
1 1/4"	80	50 10	B1100680	2,65	B5100680	2,78
1 1/4"	100	40 10	B1106100	2,72	B5106100	2,85
1 1/4"	120	30 10	B1106120	3,05	B5106120	3,65
1 1/4"	140	25 5	B1106140	3,18	B5106140	4,11
1 1/4"	150	25 5	B1106150	3,38	B5106150	4,18
1 1/4"	160	25 5	B1106160	3,91	B5106160	4,64
1 1/4"	180	25 5	B1106180	4,11	B5106180	4,97
1 1/4"	200	20 5	B1106200	4,18	B5106200	5,10
1 1/4"	250	15 5	B1106250	6,10	B5106250	7,03
1 1/4"	300	20 5	B1106300	6,89	B5106300	8,35
1 1/4"	400	16 2	B1106400	8,62	B5106400	10,67
1 1/4"	500	16 2	B1106500	10,94	B5106500	12,79
1 1/4"	600	1			B5106600	15,98
1 1/4"	800	1			B5106800	19,95
1 1/4"	1000	1			B5161000	23,93
1 1/2"	40	80 10	B1100740	2,85	B5100740	3,05
1 1/2"	50	40 10	B1100750	2,72	B5100750	3,18
1 1/2"	60	50 10	B1100760	2,98	B5100760	3,18
1 1/2"	80	40 10	B1100780	2,85	B5100780	3,18
1 1/2"	100	30 5	B1107100	3,18	B5107100	3,65
1 1/2"	120	25 5	B1107120	3,84	B5107120	4,44
1 1/2"	140	20 5	B1107140	4,18	B5107140	4,64
1 1/2"	150	20 5	B1107150	4,31	B5107150	4,71
1 1/2"	160	20 5	B1107160	4,77	B5107160	5,37
1 1/2"	180	20 5	B1107180	5,44	B5107180	5,90
1 1/2"	200	15 5	B1107200	5,30	B5107200	5,97
1 1/2"	250	10 5	B1107250	7,03	B5107250	8,35
1 1/2"	300	20 5	B1107300	8,29	B5107300	9,35
1 1/2"	400	12 2	B1107400	10,54	B5107400	12,26
1 1/2"	500	12 2	B1107500	13,06	B5107500	14,85
1 1/2"	600	1			B5107600	18,63
1 1/2"	800	1			B5107800	23,27
1 1/2"	1000	1			B5171000	*
2"	40	40 5			B5100840	3,38
2"	50	40 5			B5100850	3,51
2"	60	30 5	B1100860	3,65	B5100860	3,91
2"	80	24 6	B1100880	3,98	B5100880	4,04
2"	100	20 5	B1108100	4,04	B5108100	4,57
2"	120	16 4	B1108120	4,71	B5108120	5,77
2"	140	12 4	B1108140	5,24	B5108140	6,10
2"	150	12 4	B1108150	5,37	B5108150	6,23
2"	160	12 4	B1108160	5,77	B5108160	7,09
2"	180	12 4	B1108180	6,50	B5108180	7,56
2"	200	12 4	B1108200	6,83	B5108200	8,02
2"	250	9 3	B1108250	9,35	B5108250	10,54
2"	300	12 4	B1108300	10,61	B5108300	12,79
2"	400	10 2	B1108400	13,12	B5108400	16,90
2"	500	12 2	B1108500	16,44	B5108500	20,22
2"	600	1			B5108600	25,26
2"	800	1			B5108800	31,55

Ø	LUNGHEZZA		COD. NERI	€	COD. ZINCATI	€
2 1/2"	80	12 4	B1100A80	7,36	B5100A80	8,09
2 1/2"	100	12 4	B110A100	7,69	B510A100	8,62
2 1/2"	120	8 4	B110A120	9,41	B510A120	9,81
2 1/2"	140	6 3	B110A140	9,48	B510A140	10,47
2 1/2"	150	6 3	B110A150	9,55	B510A150	10,54
2 1/2"	160	6 3	B110A160	10,47	B510A160	11,33
2 1/2"	180	6 3	B110A180	10,54	B510A180	11,73
2 1/2"	200	6 3	B110A200	11,73	B510A200	13,12
2 1/2"	250	4 4	B110A250	14,05	B510A250	15,58
2 1/2"	300	8 4	B110A300	16,44	B510A300	17,10
2 1/2"	400	6 2			B510A400	21,48
2 1/2"	500	5 1			B510A500	26,51
2 1/2"	600	1			B510A600	31,22
2 1/2"	800	1			B510A800	41,50
2 1/2"	1000	1			B51A1000	48,32
3"	80	12 4	B1100B80	9,08	B5100B80	9,74
3"	100	8 2	B110B100	9,61	B510B100	10,54
3"	120	8 2	B110B120	11,73	B510B120	12,86
3"	140	4 2	B110B140	11,93	B510B140	12,93
3"	150	6 2	B110B150	12,06	B510B150	13,26
3"	160	4 2			B510B160	14,52
3"	180	4 2	B110B180	13,39	B510B180	14,91
3"	200	4 2	B110B200	13,99	B510B200	16,17
3"	250	4 2	B110B250	17,37	B510B250	19,02
3"	300	6 2	B110B300	19,82	B510B300	22,07
3"	400	4 2			B510B400	32,61
3"	500	4 2			B510B500	38,65
4"	80	5 5	B1100C80	16,04	B5100C80	17,37
4"	100	4 2	B110C100	17,70	B510C100	18,10
4"	120	3 1	B110C120	20,55	B510C120	20,68
4"	140	3 1	B110C140	20,95	B510C140	21,81
4"	150	3 1	B110C150	21,08	B510C150	22,94
4"	160	3 1	B110C160	22,14	B510C160	23,86
4"	180	2 1	B110C180	22,94	B510C180	24,46
4"	200	6 2	B110C200	23,93	B510C200	26,45
4"	250	4 2	B110C250	29,23	B510C250	30,69
4"	300	3 1	B110C300	32,61	B510C300	38,25
4"	400	3 1			B510C400	49,45
4"	500	3 1			B510C500	60,78

\* A richiesta



**ATUSA ITALIA SpA**

Via Giuseppe di Vittorio, 12 - 14

20050 LISCATE (MI) - **ITALIA**

Tel.: +39 02 95351070

[info.italy@atusagroup.com](mailto:info.italy@atusagroup.com)

[www.atusagroup.com](http://www.atusagroup.com)