



RACCORDI IN  
**ACCIAIO  
INOX**

**LISTINO 2022**

# RACCORDI IN ACCIAIO INOX

ATUSA propone un'ampia gamma di raccordi in acciaio inossidabile, pensati per le più diverse applicazioni in cui la resistenza all'ossidazione è di fondamentale importanza.

La raccorderia filettata viene presentata in una gamma serie "pesante", ampiamente dentro i requisiti della ISO 4144 e dedicata alle applicazioni più esigenti, e una serie "leggera", consigliata per pressioni entro i 10 bar.

Completano la famiglia una estesa gamma di raccorderia a saldare in misure ISO e millimetriche, un'ampia gamma di valvole filettate e a saldare, raccorderia alimentare, flange e bulloneria.

## RACCORDI FILETTATI AISI 316



### 90 GOMITO F/F

Ø	Box	ISO 4144 COD.	€	PN 10 COD.	€
1/8"	400 10	I0906000	3,48		
1/4"	400 10	I0906001	3,20		
3/8"	290 10	I0906002	3,31		
1/2"	160 10	I0906003	3,82	I090L003	3,22
3/4"	80 10	I0906004	5,67	I090L004	4,57
1"	50 10	I0906005	9,55	I090L005	8,36
1 1/4"	24 4	I0906006	14,21	I090L006	13,47
1 1/2"	18 2	I0906007	21,40	I090L007	15,58
2"	10 1	I0906008	29,48	I090L008	23,75
2 1/2"	6 1	I0906009	60,48		
3"	3 1	I090600A	83,29		
4"	1	I090600C	142,42		
3/4" x 1/2"	90 10			I090L043	5,16
1" x 3/4"	50 10			I090L054	7,27
1 1/4" x 3/4"	30 10			I090L064	11,35
1 1/4" x 1"	30 10			I090L065	14,02



### 92 GOMITO M/F

Ø	Box	ISO 4144 COD.	€	PN 10 COD.	€
1/8"	500 10	I0926000	4,10		
1/4"	350 10	I0926001	4,10		
3/8"	260 10	I0926002	4,21		
1/2"	160 10	I0926003	4,72	I092L003	3,26
3/4"	100 10	I0926004	7,02	I092L004	4,69
1"	50 10	I0926005	10,90	I092L005	7,27
1 1/4"	25 5	I0926006	17,30	I092L006	14,72
1 1/2"	18 2	I0926007	21,90	I092L007	17,92
2"	10 1	I0926008	31,96	I092L008	21,68
2 1/2"	4 1	I0926009	72,28		
3"	3 1	I092600A	105,81		
4"	1	I092600C	177,41		



### 96 BOCCHETTONE CONICO CURVO F/F

Ø	Box	COD.	€
1/2"	50 5	I0966003	22,58
3/4"	40 5	I0966004	27,35
1"	20 2	I0966005	35,10
1 1/4"	15 1	I0966006	58,07
1 1/2"	12 1	I0966007	68,57
2"	6 1	I0966008	96,43



### 98 BOCCHETTONE CONICO CURVO M/F

Ø	Box	COD.	€
1/2"	50 5	I0986003	23,42
3/4"	30 5	I0986004	30,44
1"	14 2	I0986005	38,41
1 1/4"	12 1	I0986006	65,48
1 1/2"	8 1	I0986007	95,30
2"	6 1	I0986008	112,38



### 120 GOMITO 45° F/F

Ø	Box	COD.	€
1/4"	400 10	I1206001	4,38
3/8"	300 10	I1206002	5,00
1/2"	150 5	I1206003	5,17
3/4"	90 5	I1206004	7,97
1"	60 5	I1206005	10,78
1 1/4"	30 1	I1206006	15,89
1 1/2"	20 1	I1206007	21,51
2"	12 1	I1206008	32,29
2 1/2"	8 1	I1206009	71,77
3"	4 1	I120600A	86,60



### 121 GOMITO 45° M/F

Ø	Box	COD.	€
1/4"	400 10	I1216001	3,20
3/8"	200 10	I1216002	4,44
1/2"	150 5	I1216003	5,95
3/4"	90 5	I1216004	8,31
1"	60 5	I1216005	14,77
1 1/4"	30 1	I1216006	21,23
1 1/2"	20 1	I1216007	24,94
2"	12 1	I1216008	38,30
2 1/2"	8 1	I1216009	79,47
3"	4 1	I121600A	101,09



## 130 TI

Ø		ISO 4144 COD.	€	PN 10 COD.	€
1/8"	380 10	I1306000	4,61		
1/4"	250 10	I1306001	4,61		
3/8"	160 10	I1306002	5,50		
1/2"	100 5	I1306003	5,90	I130L003	4,27
3/4"	50 5	I1306004	8,09	I130L004	7,40
1"	30 5	I1306005	13,37	I130L005	9,31
1 1/4"	18 2	I1306006	19,09	I130L006	17,68
1 1/2"	14 2	I1306007	26,00	I130L007	25,52
2"	10 1	I1306008	38,81	I130L008	28,95
2 1/2"	4 1	I1306009	86,77		
3"	2 1	I130600A	122,99		
4"	1	I130600C	190,61		



## 130R TI 90° RIDOTTO

Ø		ISO 4144 COD.	€	PN 10 COD.	€
1/2" x 3/8" x 1/2"	120 5	I1306323	9,43		
3/4" x 1/2" x 3/4"	60 5	I1306434	11,18	I130L434	5,99
1" x 1/2" x 1"	40 5	I1306535	18,20	I130L535	8,99
1" x 3/4" x 1"	30 5	I1306545	17,47	I130L545	9,17
1" x 1" x 1/2"	30 5	I1306553	15,72		
1 1/4" x 1/2" x 1 1/4"	30 10			I130L636	14,11
1 1/4" x 3/4" x 1 1/4"	30 10			I130L646	14,29
1 1/4" x 1" x 1 1/4"	20 5			I130L656	15,73
1 1/2" x 1" x 1 1/2"	20 5			I130L757	16,90
1 1/2" x 1 1/4" x 1 1/2"	15 5			I130L767	24,08
2" x 1" x 2"	12 3			I130L858	24,06



## 241 NIPLO DI RIDUZIONE

Ø		ISO 4144 COD.	€	PN 10 COD.	€
1/4" x 1/8"	650 10	I2416010	2,47		
3/8" x 1/8"	580 10	I2416020	2,92		
3/8" x 1/4"	580 10	I2416021	2,92		
1/2" x 1/8"	500 10	I2416030	3,20		
1/2" x 1/4"	380 10	I2416031	3,03	I241L031	2,45
1/2" x 3/8"	400 10	I2416032	3,09	I241L032	2,25
3/4" x 1/4"	240 5	I2416041	4,61		
3/4" x 3/8"	250 5	I2416042	4,61		
3/4" x 1/2"	240 5	I2416043	4,61	I241L043	2,58
1" x 3/8"	120 10	I2416052	6,12		
1" x 1/2"	140 5	I2416053	5,90	I241L053	4,55
1" x 3/4"	140 5	I2416054	5,90	I241L054	4,55
1 1/4" x 1/2"	100 5	I2416063	9,66	I241L063	7,41
1 1/4" x 3/4"	80 5	I2416064	9,10	I241L064	6,86
1 1/4" x 1"	100 5	I2416065	9,04	I241L065	6,73
1 1/2" x 1/2"	60 5	I2416073	11,96	I241L073	9,99
1 1/2" x 3/4"	60 5	I2416074	11,91	I241L074	9,99
1 1/2" x 1"	70 2	I2416075	11,85	I241L075	8,70
1 1/2" x 1 1/4"	70 2	I2416076	11,68	I241L076	8,09
2" x 1/2"	35 5	I2416083	18,65	I241L083	13,32
2" x 3/4"	35 5	I2416084	18,42	I241L084	12,91
2" x 1"	30 5	I2416085	17,80	I241L085	13,93
2" x 1 1/4"	30 5	I2416086	17,75	I241L086	13,66
2" x 1 1/2"	30 2	I2416087	16,68	I241L087	13,12
2 1/2" x 1"	24 2	I2416095	36,11		
2 1/2" x 1 1/4"	24 4	I2416096	36,05		
2 1/2" x 1 1/2"	24 2	I2416097	36,00		
2 1/2" x 2"	24 2	I2416098	36,00		
3" x 2"	16 1	I24160A8	52,51		
3" x 2 1/2"	16 1	I24160A9	52,12		
4" x 2"	8 1	I24160C8	117,43		
4" x 2 1/2"	8 1	I24160C9	120,24		
4" x 3"	8 1	I24160CA	104,96		



## 180 CROCE

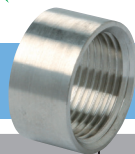


Ø		COD.	€
1/8"	250 10	I1806000	8,31
1/4"	160 10	I1806001	8,54
3/8"	120 10	I1806002	9,88
1/2"	60 10	I1806003	10,73
3/4"	36 6	I1806004	15,78
1"	20 5	I1806005	21,00
1 1/4"	16 4	I1806006	34,15
1 1/2"	12 4	I1806007	41,33
2"	6 2	I1806008	63,80
2 1/2"	3 1	I1806009	121,19
3"	2 1	I180600A	171,51
4"	1	I180600C	231,88



## 240 MANICOTTO RIDOTTO

Ø		ISO 4144 COD.	€	PN 10 COD.	€
1/4" x 1/8"	300 10	I2406010	4,16		
3/8" x 1/4"	300 10	I2406021	3,88		
1/2" x 1/4"	150 10	I2406031	4,44		
1/2" x 3/8"	200 10	I2406032	5,90	I240L032	3,06
3/4" x 1/4"	140 10	I2406041	7,53		
3/4" x 1/2"	120 5	I2406043	7,64	I240L043	3,72
1" x 1/2"	90 5	I2406053	7,53	I240L053	5,78
1" x 3/4"	70 5	I2406054	10,50	I240L054	5,78
1 1/4" x 3/4"	60 5	I2406064	12,58	I240L064	9,21
1 1/4" x 1"	40 5	I2406065	13,14	I240L065	10,07
1 1/2" x 1"	40 5	I2406075	15,39	I240L075	9,31
1 1/2" x 1 1/4"	30 5	I2406076	18,59	I240L076	13,41
2" x 1"	30 5	I2406085	19,94	I240L085	16,03
2" x 1 1/4"	25 5	I2406086	20,78	I240L086	17,52
2" x 1 1/2"	25 5	I2406087	27,97	I240L087	17,52
2 1/2" x 2"	12 2	I2406098	37,51		
3" x 2"	12 2	I24060A8	67,39		


**170** MEZZO MANICOTTO A SALDARE

Ø		COD.	AISI 304 €	COD.	AISI 316 €
1/4"	350 10	I1704001	1,74	I1706001	2,02
3/8"	320 10	I1704002	1,97	I1706002	2,19
1/2"	240 10	I1704003	2,58	I1706003	3,09
3/4"	100 10	I1704004	3,20	I1706004	3,59
1"	50 10	I1704005	4,89	I1706005	5,90
1 1/4"	40 5	I1704006	8,20	I1706006	9,38
1 1/2"	35 5	I1704007	9,10	I1706007	10,95
2"	18 2	I1704008	13,87	I1706008	16,17
2 1/2"	12 2	I1704009	28,30	I1706009	32,63
3"	8 2	I170400A	41,39	I170600A	43,80
4"	4 1	I170400C	46,16	I170600C	52,57


**270** MANICOTTO A SALDARE

Ø		COD.	AISI 304 €	COD.	AISI 316 €
1/8"	800 10	I2704000	2,75	I2706000	3,20
1/4"	450 10	I2704001	3,82	I2706001	3,26
3/8"	400 10	I2704002	3,20	I2706002	3,59
1/2"	240 10	I2704003	3,76	I2706003	4,55
3/4"	180 5	I2704004	4,89	I2706004	5,90
1"	80 5	I2704005	7,58	I2706005	8,93
1 1/4"	50 2	I2704006	12,30	I2706006	14,43
1 1/2"	40 2	I2704007	14,49	I2706007	16,51
2"	24 1	I2704008	20,67	I2706008	23,08
2 1/2"	12 1	I2704009	43,52	I2706009	52,12
3"	8 1	I270400A	51,44	I270600A	61,50
4"	4 1	I270400C	79,69	I270600C	95,36


**285** RACCORDO PASSAPARETE

Ø		COD.	€
3/8"	100 5	I2856002	19,38
1/2"	100 5	I2856003	20,11
3/4"	60 5	I2856004	24,88
1"	40 5	I2856005	40,55
1 1/4"	20 2	I2856006	57,00
1 1/2"	16 2	I2856007	68,80
2"	16 2	I2856008	100,30


**290** TAPPO M

Ø		ISO 4144 COD.	€	PN 10 COD.	€
1/8"	800 10	I2906000	2,41		
1/4"	600 10	I2906001	2,30		
3/8"	500 10	I2906002	2,36		
1/2"	300 10	I2906003	2,70	I290L003	2,25
3/4"	200 5	I2906004	4,38	I290L004	3,15
1"	140 5	I2906005	5,56	I290L005	4,27
1 1/4"	81 3	I2906006	10,56	I290L006	6,74
1 1/2"	60 3	I2906007	14,99	I290L007	8,24
2"	30 1	I2906008	20,72	I290L008	13,86
2 1/2"	24 1	I2906009	38,53		
3"	16 1	I290600A	55,37		
4"	8 1	I290600C	95,08		


**245** NIPPLLO RIDOTTO M/M

Ø		ISO 4144 COD.	€	PN 10 COD.	€
1/4" x 1/8"	520 10	I2456010	3,54		
3/8" x 1/8"	400 10	I2456020	4,04		
3/8" x 1/4"	400 10	I2456021	3,99		
1/2" x 1/4"	280 10	I2456031	4,44		
1/2" x 3/8"	200 10	I2456032	4,38	I245L032	3,04
3/4" x 1/4"	200 10	I2456041	5,84		
3/4" x 3/8"	100 10	I2456042	5,78	I245L042	3,89
3/4" x 1/2"	180 10	I2456043	5,73	I245L043	4,37
1" x 1/2"	100 5	I2456053	7,53	I245L053	4,76
1" x 3/4"	100 5	I2456054	7,36	I245L054	3,93
1 1/4" x 1/2"	60 5	I2456063	12,97	I245L063	7,72
1 1/4" x 3/4"	70 5	I2456064	12,86	I245L064	7,95
1 1/4" x 1"	60 5	I2456065	12,86	I245L065	8,02
1 1/2" x 1/2"	45 3	I2456073	13,53		
1 1/2" x 3/4"	54 3	I2456074	15,67	I245L074	8,17
1 1/2" x 1"	40 2	I2456075	15,67	I245L075	10,10
1 1/2" x 1 1/4"	36 2	I2456076	15,56	I245L076	9,95
2" x 1"	28 2	I2456085	21,51	I245L085	15,67
2" x 1 1/4"	30 2	I2456086	21,40	I245L086	18,32
2" x 1 1/2"	26 2	I2456087	21,34	I245L087	18,63
2 1/2" x 1"	12 2	I2456095	43,58		
2 1/2" x 1 1/4"	12 2	I2456096	43,58		
2 1/2" x 1 1/2"	12 2	I2456097	43,36		
2 1/2" x 2"	20 1	I2456098	43,30		
3" x 2"	10 1	I24560A8	62,84		
3" x 2 1/2"	10 1	I24560A9	62,84		


**280** NIPPLLO

Ø		ISO 4144 COD.	€	PN 10 COD.	€
1/8"	700 10	I2806000	2,58		
1/4"	500 10	I2806001	2,70		
3/8"	400 10	I2806002	3,14		
1/2"	240 10	I2806003	3,43	I280L003	2,38
3/4"	120 5	I2806004	4,72	I280L004	2,92
1"	80 5	I2806005	6,85	I280L005	4,76
1 1/4"	45 3	I2806006	10,78	I280L006	7,28
1 1/2"	30 2	I2806007	13,37	I280L007	8,54
2"	20 1	I2806008	18,20	I280L008	14,11
2 1/2"	12 1	I2806009	41,95		
3"	8 1	I280600A	55,94		
4"	4 1	I280600C	87,72		


**300** TAPPO F

Ø		ISO 4144 COD.	€	PN 10 COD.	€
1/8"	600 10	I3006000	2,25		
1/4"	600 10	I3006001	2,36		
3/8"	400 10	I3006002	2,75		
1/2"	250 5	I3006003	3,54	I300L003	1,74
3/4"	180 5	I3006004	4,32	I300L004	2,41
1"	120 5	I3006005	6,07	I300L005	3,76
1 1/4"	60 3	I3006006	11,46	I300L006	6,59
1 1/2"	46 2	I3006007	13,03	I300L007	7,41
2"	30 1	I3006008	20,61	I300L008	11,51
2 1/2"	20 1	I3006009	47,85		
3"	12 1	I300600A	72,56		
4"	8 1	I300600C	109,23		



## 312 CONTRODADO



Ø	Box		COD.	€
1/8"	1000	10	I3106000	2,13
1/4"	800	10	I3106001	2,25
3/8"	600	10	I3106002	2,36
1/2"	400	5	I3106003	2,58
3/4"	300	5	I3106004	3,31
1"	200	5	I3106005	4,38
1 1/4"	120	3	I3106006	6,68
1 1/2"	100	2	I3106007	8,59
2"	20	1	I3106008	12,52
2 1/2"	25	1	I3106009	26,90
3"	20	1	I310600A	33,02
4"	10	1	I310600C	48,58



## 315 PORTA GOMMA M



Ø	Box		COD.	€
1/8" x 8 mm.	500	10	I3156000	4,89
1/4" x 9 mm.	500	10	I3156001	4,94
3/8" x 11 mm.	350	10	I3156002	5,78
1/2" x 15 mm.	200	10	I3156003	7,97
3/4" x 20 mm.	120	5	I3156004	10,39
1" x 27 mm.	60	5	I3156005	13,48
1 1/4" x 33 mm.	40	2	I3156006	19,21
1 1/2" x 40 mm.	35	1	I3156007	23,59
2" x 53 mm.	15	1	I3156008	37,96
2 1/2" x 66 mm.	10	1	I3156009	87,16
3" x 80 mm.	8	1	I315600A	112,66
4" x 105 mm.	2	1	I315600C	209,98



## 330 BOCCHETTONE A SEDE PIANA F/F - TEFLON

Ø	Box		ISO 4144 COD.	€	PN 10 COD.	€
1/4"	120	10	I3306001	8,26		
3/8"	100	10	I3306002	8,82		
1/2"	100	10	I3306003	9,32		
3/4"	60	10	I3306004	13,09	I330L003	7,54
1"	40	10	I3306005	17,69	I330L004	11,02
1 1/4"	20	5	I3306006	28,70	I330L005	16,69
1 1/2"	18	3	I3306007	29,32	I330L006	24,34
2"	16	2	I3306008	45,32	I330L007	25,14
2 1/2"	6	2	I3306009	88,06	I330L008	39,21
3"	4	1	I330600A	126,58		
4"	2	1	I330600C	213,97		



## 331 BOCCHETTONE A SEDE PIANA M/F - TEFLON

Ø	Box		ISO 4144 COD.	€	PN 10 COD.	€
1/4"	200	10	I3316001	8,20		
3/8"	150	10	I3316002	10,11		
1/2"	100	10	I3316003	10,22		
3/4"	60	5	I3316004	15,56	I331L003	8,49
1"	42	3	I3316005	21,34	I331L004	12,91
1 1/4"	21	3	I3316006	33,75	I331L005	16,38
1 1/2"	16	2	I3316007	42,29	I331L006	28,78
2"	10	1	I3316008	62,73	I331L007	35,69
2 1/2"	6	1	I3316009	106,25		
3"	4	1	I331600A	152,53		
4"	2	1	I331600C	260,98		



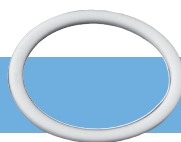
## 340 BOCCHETTONE CONICO F/F

Ø	Box		ISO 4144 COD.	€	PN 10 COD.	€
1/8"	250	10	I3406000	8,20		
1/4"	200	10	I3406001	8,26		
3/8"	150	10	I3406002	9,27		
1/2"	100	10	I3406003	9,49	I340L003	7,72
3/4"	60	5	I3406004	12,64	I340L004	11,24
1"	42	3	I3406005	17,80	I340L005	14,76
1 1/4"	21	3	I3406006	29,32	I340L006	24,26
1 1/2"	16	2	I3406007	36,39	I340L007	30,67
2"	16	1	I3406008	49,36	I340L008	50,59
2 1/2"	6	1	I3406009	92,10		
3"	4	1	I340600A	132,48		
4"	2	1	I340600C	218,18		



## 341 BOCCHETTONE CONICO M/F

Ø	Box		ISO 4144 COD.	€	PN 10 COD.	€
1/8"	250	10	I3416000	9,27		
1/4"	200	10	I3416001	9,49		
3/8"	120	10	I3416002	10,28		
1/2"	100	10	I3416003	11,18	I341L003	7,81
3/4"	50	5	I3416004	15,50	I341L004	11,35
1"	30	3	I3416005	20,22	I341L005	16,51
1 1/4"	21	3	I3416006	37,29	I341L006	26,84
1 1/2"	16	2	I3416007	42,34	I341L007	28,34
2"	10	1	I3416008	60,26	I341L008	46,00
2 1/2"	5	1	I3416009	107,04		
3"	2	1	I341600A	158,09		
4"	1	1	I341600C	264,18		


**GUARNIZIONE PTFE  
PIANA PER 330 E 331**

Ø		COD. ISO 4144	€	COD. PN 10	€
1/4"	100 10	I33J0001	0,78		
3/8"	100 10	I33J0002	0,78		
1/2"	100 10	I33J0003	0,99	I33LJ003	0,86
3/4"	100 10	I33J0004	1,07	I33LJ004	0,91
1"	100 10	I33J0005	1,46	I33LJ005	1,35
1 1/4"	100 10	I33J0006	2,02	I33LJ006	1,91
1 1/2"	100 10	I33J0007	3,59	I33LJ007	3,14
2"	100 10	I33J0008	4,89	I33LJ008	4,55
2 1/2"	100 10	I33J0009	6,96		
3"	100 10	I33J000A	6,96		
4"	100 10	I33J000C	9,60		


**530 BARILOTTA**


Ø		COD.	€
1/8" x 40 mm.	800 10	I5306000	4,38
1/4" x 40 mm.	500 10	I5306001	4,72
3/8" x 40 mm.	400 10	I5306002	6,74
1/2" x 60 mm.	180 10	I5306003	8,31
3/4" x 60 mm.	120 10	I5306004	8,76
1" x 60 mm.	120 5	I5306005	13,09
1 1/4" x 80 mm.	40 2	I5306006	18,98
1 1/2" x 80 mm.	25 1	I5306007	20,67
2" x 100 mm.	18 1	I5306008	32,01
2 1/2" x 100 mm.	10 1	I5306009	47,23
3" x 120 mm.	5 1	I530600A	66,27
4" x 120 mm.	2 1	I530600C	115,30
3/8" x 80 mm.	280 10	I5362080	8,54
3/8" x 150 mm.	120 10	I5362150	9,43
1/2" x 80 mm.	210 10	I5363080	8,54
1/2" x 120 mm.	200 10	I5363120	9,94
1/2" x 150 mm.	110 10	I5363150	11,63
3/4" x 100 mm.	60 10	I5364100	11,34
3/4" x 120 mm.	70 10	I5364120	12,30
3/4" x 150 mm.	60 10	I5364150	14,88
3/4" x 200 mm.	50 10	I5364200	17,92
1" x 40 mm.	140 10	I5365040	8,54
1" x 80 mm.	70 10	I5365080	17,69
1" x 100 mm.	60 10	I5365100	18,31
1" x 150 mm.	40 10	I5365150	20,11
1" x 200 mm.	30 10	I5365200	23,53
1 1/4" x 100 mm.	40 10	I5366100	22,74
1 1/4" x 150 mm.	25 1	I5366150	29,43
1 1/2" x 150 mm.	20 1	I5367150	50,43
2" x 60 mm.	30 10	I5368060	25,55
2" x 150 mm.	12 1	I5368150	53,80

MISURE DIFFERENTI DISPONIBILI A RICHIESTA


**531 NIPPLO SEMPLICE**


Ø		COD.	€
1/4"	1000 10	I5316001	9,15
3/8"	600 10	I5316002	9,21
1/2"	350 5	I5316003	9,83
3/4"	200 5	I5316004	12,92
1"	140 5	I5316005	14,38
1 1/4"	80 2	I5316006	18,08
1 1/2"	60 2	I5316007	22,80
2"	18 1	I5316008	31,17


**600 TRONCHETTO A  
SALDARE**


Ø		COD.	AISI 304 €	COD.	AISI 316 €
1/8" x 30mm	1200 10	I6004000	2,02	I6006000	2,36
1/4" x 30mm	500 10	I6004001	2,08	I6006001	2,41
3/8" x 30mm	500 10	I6004002	2,13	I6006002	2,58
1/2" x 35mm	300 5	I6004003	2,58	I6006003	2,86
3/4" x 40mm	180 5	I6004004	3,43	I6006004	3,59
1" x 40 mm	120 5	I6004005	4,04	I6006005	4,72
1 1/4" x 50 mm	60 3	I6004006	5,95	I6006006	10,00
1 1/2" x 50 mm	40 2	I6004007	6,68	I6006007	10,78
2" x 50 mm	30 1	I6004008	9,15	I6006008	14,21
2 1/2" x 60 mm	18 1	I6004009	23,42	I6006009	28,25
3" x 70 mm	12 1	I600400A	35,55	I600600A	46,11
4" x 80mm	4 1	I600400C	69,13	I600600C	82,89


**700 GIUNTO FILETTATO -  
PORTA GOMMA**


Ø		COD.	€
1/4" x 70 mm.	400 10	I7001070	4,16
3/8" x 70 mm.	250 10	I7002070	5,11
1/2" x 70 mm.	180 10	I7003070	6,29
3/4" x 70 mm.	120 10	I7004070	7,53
1" x 70 mm.	90 5	I7005070	10,50
1 1/4" x 70 mm.	40 5	I7006070	13,76
1 1/2" x 100 mm.	25 5	I7007100	20,16
2" x 100 mm.	20 1	I7008100	26,84


**800 GIUNTO PORTA  
GOMMA-PORTA GOMMA**



Ø		COD.	€
1/4" x 66 mm.	300 10	I8001066	4,16
3/8" x 76 mm.	250 10	I8002076	5,39
1/2" x 86 mm.	160 10	I8003086	7,24
3/4" x 100 mm.	80 10	I8004100	9,88
1" x 114 mm.	50 5	I8005114	14,66
1 1/4" x 114 mm.	30 5	I8006114	19,26
1 1/2" x 122 mm.	25 5	I8007122	24,37
2" x 130 mm.	15 1	I8008130	32,91

## COLLARE



COLLARE INOX AISI 304

Spessore 2 mm.


POLLICI	mm.	DADO		COD.	€
3/8"	16-18	M8	150 2	IRAF5102	3,67
1/2"	20-22	M8	100 2	IRAF5103	3,92
3/4"	25-28	M8	100 2	IRAF5104	4,07
1"	31-34	M8	100 2	IRAF5105	4,40
1 1/4"	39-43	M8	100 2	IRAF5106	4,87
1 1/2"	45-48.5	M8	100 2	IRAF5107	5,44
2"	58-61	M8	100 2	IRAF5108	5,99
2 1/2"	73-76.5	M10	50 2	IRAF5109	10,18
3"	86-89	M10	50 2	IRAF510A	11,15
4"	110-115	M10	50 2	IRAF510C	12,76

## CAVALLOTTO



CAVALLOTTO INOX AISI 304


Forniti con dado e rondella

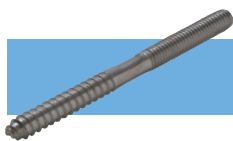
Ø TUBO	POLLICI	FILETT.		COD.	€
17,1	3/8"	M6	100 10	RFABI202	1,42
21,3	1/2"	M6	100 10	RFABI203	1,57
26,9	3/4"	M6	100 10	RFABI204	1,78
33,7	1"	M6	100 10	RFABI205	2,06
42,2	1 1/4"	M6	100 5	RFABI206	2,14
48,3	1 1/2"	M8	50 5	RFABI207	4,41
54,0	-	M8	50 5	RFABI254	5,27
60,3	2"	M8	50 5	RFABI208	4,70
76,1	2 1/2"	M8	25 5	RFABI20A	5,77
84,0	-	M8	25 5	RFABI284	6,26
88,9	3"	M8	25 5	RFABI20B	6,41
104,0	-	M10	20 2	RFABI210	10,96
114,4	4"	M10	20 2	RFABI20D	12,74
129,0	-	M10	20 2	RFABI213	14,02
139,7	5"	M10	20 2	RFABI20E	15,02
154,0	-	M10	16 2	RFABI215	16,59
168,3	6"	M10	16 2	RFABI20F	18,79
204,0	-	M10	10 2	RFABI220	20,29
219,1	8"	M10	10 2	RFABI20H	23,07
254,0	-	M10	6 2	RFABI225	24,20
304,0	-	M10	6 2	RFABI230	27,55




COLLARE INOX CON VITE E TASSELLO AISI 304

Spessore 2 mm.

POLLICI	mm.	VITE	TASELLO		COD.	€
3/8"	16-18	M8x100	10x50	100 2	IRAF5502	5,95
1/2"	20-22	M8x100	10x50	100 2	IRAF5503	6,19
3/4"	25-28	M8x100	10x50	100 2	IRAF5504	6,28
1"	31-34	M8x100	10x50	100 2	IRAF5505	6,76
1 1/4"	39-43	M8x100	10x50	100 2	IRAF5506	6,85
1 1/2"	45-48.5	M8x100	10x50	50 2	IRAF5507	7,26
2"	58-61	M8x100	10x50	50 2	IRAF5508	8,14
2 1/2"	73-76.5	M10x120	12x60	20 2	IRAF5509	13,21
3"	86-89	M10x120	12x60	20 2	IRAF550A	14,10
4"	110-115	M10x120	12x60	20 2	IRAF550C	15,23



VITE DOPPIA FE - LE INOX AISI 304

FILETT.	mm.		COD.	€
M8	90	500 10	IRAFTD08	2,11
M10	120	500 10	IRAFTD10	3,79

**RACCORDERIA ALIMENTARE NW - DIN 11851 (SERIE 1)**

**RACCORDO FEMMINA A SALDARE**

Ø		COD. AISI 304	€	COD. AISI 316	€
15	700 10			I3816003	4,21
20	400 10			I3816004	5,46
25	225 5	I3814005	5,46	I3816005	6,31
32	180 5	I3814006	7,17	I3816006	7,56
40	150 5	I3814007	7,89	I3816007	8,95
50	90 5	I3814008	10,92	I3816008	12,04
65	48 2	I3814009	15,52	I3816009	18,48
80	28 2	I381400A	19,93	I381600A	25,13
100	20 2	I381400C	29,47	I381600C	40,13
125	20 1			I381600D	60,85
150	16 1			I381600E	79,40


**GIRELLA**

Ø		COD.	€
15	300 10	I3744003	9,27
20	180 10	I3744004	11,12
25	150 5	I3744005	11,12
32	125 5	I3744006	11,31
40	80 5	I3744007	12,37
50	55 5	I3744008	13,95
65	30 2	I3744009	21,58
80	16 2	I374400A	32,69
100	14 2	I374400C	38,15
125	14 1	I374400D	67,56
150	10 1	I374400E	103,34


**RACCORDO MASCHIO A SALDARE**

Ø		COD. AISI 304	€	COD. AISI 316	€
15	500 10			I3806003	4,21
20	300 10			I3806004	5,46
25	160 5	I3804005	9,27	I3806005	6,31
32	120 5	I3804006	9,80	I3806006	7,56
40	75 5	I3804007	11,71	I3806007	8,95
50	60 5	I3804008	14,01	I3806008	12,04
65	36 2	I3804009	13,42	I3806009	18,48
80	24 2	I380400A	30,85	I380600A	25,13
100	12 2	I380400C	37,82	I380600C	40,13
125	15 1			I380600D	60,85
150	10 1			I380600E	79,40


**GIRELLA CIECA CON GUARNIZIONE EPDM E CATENA**

Ø		COD.	€
25	85 5	I3834005	25,85
32	60 5	I3834006	32,17
40	60 5	I3834007	36,18
50	50 5	I3834008	44,73
65	36 2	I3834009	64,00
80	20 2	I383400A	81,50
100	12 2	I383400C	103,14


**GUARNIZIONE**

Ø		COD. EPDM	€	COD. NBR	€
15	300 10	IJAL0003	0,78	IJALN003	0,79
20	300 10	IJAL0004	0,78	IJALN004	0,79
25	680 10	IJAL0005	0,95	IJALN005	0,95
32	900 10	IJAL0006	0,95	IJALN006	0,95
40	700 10	IJAL0007	0,95	IJALN007	0,95
50	700 10	IJAL0008	1,01	IJALN008	1,09
65	600 10	IJAL0009	1,70	IJALN009	1,70
80	600 10	IJAL000A	1,76	IJALN00A	1,76
100	500 10	IJAL000C	2,43	IJALN00C	3,87
125	- 6	IJAL000D	2,84	IJALN00D	2,99
150	- 5	IJAL000E	5,76	IJALN00E	5,89


**GUARNIZIONE EPDM PER GIRELLA CIECA**

Ø		COD.	€
25	680 10	IJALCE05	2,92
32	900 10	IJALCE06	2,99
40	700 10	IJALCE07	3,26
50	700 10	IJALCE08	4,00
65	300 10	IJALCE09	4,75
80	300 10	IJALCE0A	5,42
100	250 10	IJALCE0C	6,84

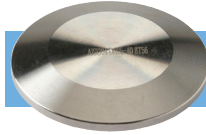


## RACCORDERIA CLAMP



**COLLARE CLAMP  
INOX AISI 304**

Ø	POLLICI	TRONCHETTO CLAMP mm.		COD.	€
	1/2" - 3/4"	25,0	150 1	IRFC4008	11,97
10-15-20		34,0	130 1	IRFC4010	13,16
25-32-40	1" - 1.5"	50,5	100 1	IRFC4025	15,72
50	2"	64,0	100 1	IRFC4050	18,62
	2 1/2"	77,5	80 1	IRFC4060	20,59
65	3"	91,0	70 1	IRFC4065	22,76
80	3.5"	106,0	50 1	IRFC4080	25,52
100	4"	119,0	40 1	IRFC4100	27,43



**TAPPO CLAMP INOX  
AIS I 316L**

Ø	STANDARD	DIAM. EXT TUBO		COD.	€
1/2" - 3/4"	3A	25,4	800 20	IRCB6009	7,04
10 - 15 - 20	DIN	34,0	800 20	IRCB6010	7,83
25 - 32 - 40	DIN	50,5	300 20	IRCB6025	8,81
50	DIN	64,0	200 20	IRCB6050	12,70
2 1/2"	3A	77,5	100 5	IRCB6060	15,72
65	DIN	91,0	60 5	IRCB6065	19,60
80	DIN	106,0	60 5	IRCB6080	26,51
100	DIN	119,0	40 5	IRCB6100	38,22



**TRONCHETTO CLAMP A SALDARE INOX AISI 316L**

Ø	STANDARD	DIAM. EXT TUBO	DIAM. EXT. CLAMP	LUNGHEZZA		COD.	€
1/2"	3A	12,7	25,4	28,6	350 10	IRCC6009	8,22
10	DIN	12,0	34,0	21,5	350 10	IRCC6010	8,22
15	DIN	18,0	34,0	21,5	350 10	IRCC6015	8,22
3/4"	3A	19,0	25,4	28,6	350 10	IRCC6016	8,03
20	DIN	22,0	34,0	21,5	250 10	IRCC6020	7,83
1"	3A	25,4	50,5	28,6	150 10	IRCC6022	7,83
25	DIN	28,0	50,5	21,5	180 10	IRCC6025	7,76
32	DIN	34,0	50,5	21,5	180 10	IRCC6032	7,70
1 1/2"	3A	38,1	50,5	28,6	150 10	IRCC6035	7,70
40	DIN	40,0	50,5	21,5	180 10	IRCC6040	7,56
2"	3A	50,8	64,0	28,6	120 10	IRCC6048	9,01
50	DIN	52,0	64,0	21,5	150 10	IRCC6050	10,00
2 1/2"	3A	63,5	77,5	28,6	70 10	IRCC6060	13,68
65	DIN	70,0	91,0	21,5	70 5	IRCC6065	15,85
3"	3A	76,2	91,0	28,6	40 5	IRCC6073	16,91
80	DIN	85,0	106,0	21,5	60 5	IRCC6080	19,60
4"	3A	101,6	119,0	28,6	25 5	IRCC6097	22,56
100	DIN	104,0	119,0	21,5	30 5	IRCC6100	23,55



**GUARNIZIONE CLAMP**

Ø	STANDARD	DIAM. INT.	DIAM. EXT.		COD. EPDM	€	COD. NBR	€
1/2"	3A	9,9	25,4	800 10	IRCJE009	0,99	IRCJN009	1,12
10	DIN	10,2	34,0	800 10	IRCJE010	0,99	IRCJN010	1,12
15	DIN	16,2	34,0	800 10	IRCJE015	0,99	IRCJN015	1,12
3/4"	3A	16,2	25,4	800 10	IRCJE016	0,99	IRCJN016	1,12
20	DIN	20,2	34,0	600 10	IRCJE020	0,99	IRCJN020	1,12
1"	3A	22,8	50,5	600 10	IRCJE022	1,58	IRCJN022	1,71
25	DIN	26,2	50,5	500 10	IRCJE025	1,58	IRCJN025	1,97
32	DIN	32,2	50,5	500 10	IRCJE032	1,58	IRCJN032	1,97
1 1/2"	3A	35,8	50,5	500 10	IRCJE035	1,58	IRCJN035	1,97
40	DIN	38,2	50,5	500 10	IRCJE040	1,58	IRCJN040	1,97
2"	3A	48,8	64,0	400 10	IRCJE048	1,97	IRCJN048	2,30
50	DIN	50,2	64,0	400 10	IRCJE050	1,97	IRCJN050	2,57
2 1/2"	3A	60,5	77,5	350 10	IRCJE060	2,76	IRCJN060	3,55
65	DIN	66,2	91,0	350 5	IRCJE065	3,16	IRCJN065	3,95
3"	3A	73,1	91,0	150 5	IRCJE073	3,35	IRCJN073	4,41
80	DIN	81,2	106,0	150 5	IRCJE080	3,95	IRCJN080	4,93
4"	3A	97,8	119,0	125 5	IRCJE097	4,41	IRCJN097	5,53
100	DIN	100,2	119,0	125 5	IRCJE100	4,67	IRCJN100	5,92

**RACCORDI A SALDARE DIN 11852 - ALIMENTARI (SERIE 1)**

**CURVE 90°  
RICAVATE DA TUBO SALDATO**

DN	ESPESS. mm.	DIAM. EXT. mm.	R mm.		AISI 304		AISI 316L	
					COD.	€	COD.	€
10	1,5	12	26,0	10			IAC96010	6,45
15	1,5	18	35,0	10			IAC96015	7,17
20	1,5	22	40,0	9			IAC96020	7,43
25	1,5	28	50,0	7	IAC94025	6,64	IAC96025	8,42
32	1,5	34	55,0	5	IAC94032	7,96	IAC96032	10,33
40	1,5	40	60,0	5	IAC94040	9,34	IAC96040	12,10
50	1,5	52	70,0	4	IAC94050	11,91	IAC96050	15,33
65	2,0	70	80,0	3	IAC94065	19,21	IAC96065	23,48
80	2,0	85	90,0	2	IAC94080	27,30	IAC96080	34,34
100	2,0	104	100,0	1	IAC94100	41,64	IAC96100	48,48
125	2,0	129	187,5	1			IAC96125	108,87
150	2,0	154	225,0	1			IAC96150	145,51


**TI**

DN	ESPESS. mm.	DIAM. EXT. mm.	R mm.		AISI 304		AISI 316L	
					COD.	€	COD.	€
10	1,5	12	26,0	4			IATL6010	12,83
15	1,5	18	35,0	4			IATL6015	13,35
20	1,5	22	40,0	4			IATL6020	15,26
25	1,5	28	50,0	4	IATL4025	12,17	IATL6025	14,41
32	1,5	34	55,0	4	IATL4032	14,60	IATL6032	16,91
40	1,5	40	60,0	4	IATL4040	16,71	IATL6040	18,62
50	1,5	52	70,0	3	IATL4050	20,79	IATL6050	26,11
65	2,0	70	80,0	3	IATL4065	31,25	IATL6065	40,13
80	2,0	85	90,0	2	IATL4080	41,84	IATL6080	54,07
100	2,0	104	100,0	1	IATL4100	57,16	IATL6100	72,36
125	2,0	129	187,5	1			IATL6125	128,80
150	2,0	154	225,0	1			IATL6150	218,59


**RIDUZIONI CONCENTRICHE  
AISI 316L**

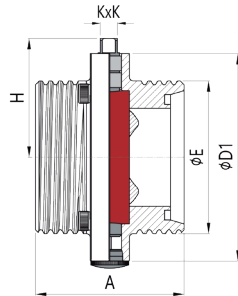
DN	SPESSORE mm.		COD.	€
15 x 10	1,5	10	IARC6032	7,43
20 x 10	1,5	10	IARC6042	7,43
20 x 15	1,5	10	IARC6043	7,43
25 x 10	1,5	10	IARC6052	7,76
25 x 15	1,5	10	IARC6053	6,12
25 x 20	1,5	10	IARC6054	5,72
32 x 15	1,5	10	IARC6063	8,81
32 x 20	1,5	10	IARC6064	7,76
32 x 25	1,5	10	IARC6065	6,12
40 x 20	1,5	10	IARC6074	10,20
40 x 25	1,5	10	IARC6075	7,10
40 x 32	1,5	10	IARC6076	11,12
50 x 25	1,5	10	IARC6085	8,81
50 x 32	1,5	10	IARC6086	8,03
50 x 40	1,5	10	IARC6087	6,91
65 x 32	2,0	1	IARC6096	21,58
65 x 40	2,0	1	IARC6097	14,27
65 x 50	2,0	1	IARC6098	11,51
80 x 40	2,0	1	IARC60A7	34,53
80 x 50	2,0	1	IARC60A8	22,04
80 x 65	2,0	1	IARC60A9	19,73
100 x 50	2,0	1	IARC60C8	47,56
100 x 65	2,0	1	IARC60C9	41,31
100 x 80	2,0	1	IARC60CA	34,53

## VALVOLE - ALIMENTARI



### VALVOLA A FARFALLA ALIMENTARE DIN 11851 - FILETTATA / FILETTATA

Fabbricata in acciaio INOX AISI 304.  
Guarnizione in EPDM.  
Filettatura secondo DIN 11851.  
Pressione massima di esercizio: PN 10.  
Temperatura di lavoro: -20° C a 130° C.

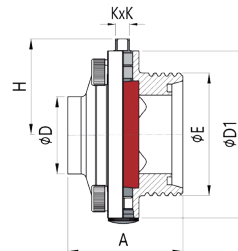


Ø	H	Ø E	KxK	A	Ø D1		COD.	€
25	50,5	RD52x1/6"	8 x 8	66	78	16 1	IV90E025	96,76
32	54,5	RD58x1/6"	8 x 8	70	86	16 1	IV90E032	105,51
40	56,0	RD65x1/6"	8 x 8	74	95	16 1	IV90E040	118,86
50	64,0	RD78x1/6"	8 x 8	76	108	8 1	IV90E050	147,94
65	74,0	RD95x1/6"	8 x 8	84	125	8 1	IV90E065	199,31
80	81,5	RD110x1/4"	10 x 10	90	140	6 1	IV90E080	259,57
100	91,5	RD130x1/4"	10 x 10	104	160	4 1	IV90E100	427,24



### VALVOLA A FARFALLA ALIMENTARE DIN 11851 - FILETTATA / SALDARE

Fabbricata in acciaio INOX AISI 304.  
Guarnizione in EPDM.  
Filettatura secondo DIN 11851/saldare.  
Pressione massima di esercizio: PN 10.  
Temperatura di lavoro: -20° C a 130° C.

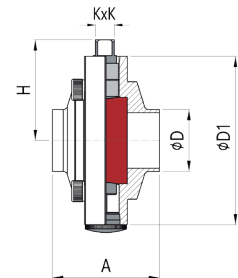


Ø	H	Ø D	Ø E	KxK	A	Ø D1		COD.	€
25	50,5	28	RD52x1/6"	8 x 8	58	78	16 1	IV91E025	85,91
32	54,5	34	RD58x1/6"	8 x 8	58	86	16 1	IV91E032	96,96
40	56,0	40	RD65x1/6"	8 x 8	60	95	16 1	IV91E040	110,44
50	64,0	52	RD78x1/6"	8 x 8	64	108	12 1	IV91E050	134,65
65	74,0	70	RD95x1/6"	8 x 8	68	125	8 1	IV91E065	179,32
80	81,5	85	RD110x1/4"	10 x 10	71	140	8 1	IV91E080	236,94
100	91,5	104	RD130x1/4"	10 x 10	84	160	4 1	IV91E100	347,91



### VALVOLA A FARFALLA ALIMENTARE DIN 11851 - SALDARE / SALDARE

Fabbricata in acciaio INOX AISI 304.  
Guarnizione in EPDM.  
Pressione massima di esercizio: PN 10.  
Temperatura di lavoro: -20° C a 130° C.

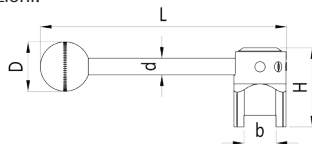


Ø	H	Ø D	KxK	A	Ø D1		COD.	€
25	50,5	28	8 x 8	50	78	16 1	IV92E025	71,44
32	54,5	34	8 x 8	50	86	16 1	IV92E032	96,70
40	56,0	40	8 x 8	50	95	16 1	IV92E040	102,88
50	64,0	52	8 x 8	52	108	12 1	IV92E050	116,96
65	74,0	70	8 x 8	56	125	8 1	IV92E065	149,91
80	81,5	85	10 x 10	60	140	8 1	IV92E080	207,47
100	91,5	104	10 x 10	64	160	4 1	IV92E100	257,86



### LEVA PER VALVOLE A FARFALLA ALIMENTARE DIN 11851

Fabbricata in acciaio INOX AISI 304.  
Azionamento manuale in 3 posizioni.



Ø	D	d	b	H	L		COD.	€
25-65	32	10,5	20,2	50	153	60 1	IV9P0025	34,35
80-100	40	12,0	22,1	56	203	40 1	IV9P0080	42,50



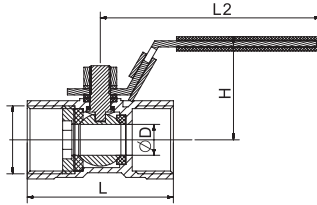
### GUARNIZIONI PER VALVOLE A FARFALLA DIN 11851

Ø		COD. EPDM	€	COD. NBR	€
25	384 2	IV9GE025	7,76	IV9GN025	8,55
32	210 2	IV9GE032	8,55	IV9GN032	9,54
40	148 2	IV9GE040	9,54	IV9GN040	10,39
50	160 2	IV9GE050	11,18	IV9GN050	12,17
65	84 2	IV9GE065	12,70	IV9GN065	13,62
80	30 2	IV9GE080	17,04	IV9GN080	18,62
100	36 2	IV9GE100	23,81	IV9GN100	25,79

**VALVOLE ACCIAIO INOX AISI 316**

**VALVOLA A SFERA 1 PEZZO PASSAGGIO RIDOTTO**

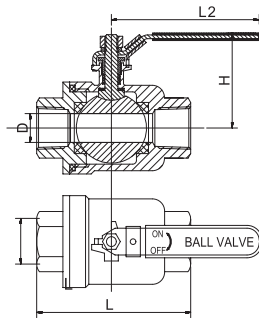
Corpo in Acciaio inox CF8M (AISI 316).  
Stelo in AISI 316.  
Maniglia in AISI 304 rivestita in PVC azzurro.  
Sede sfera in PTFE + 15% GF.  
Filettatura ISO 7/1 (filettatura R-Rp).  
Temperatura di lavoro da -20° C a 180° C.  
Pressione di lavoro in base al diametro,  
fino a PN 63.  
Lucchettabile.



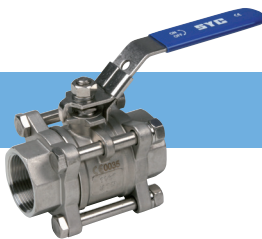
Ø	D mm.	L mm.	L2 mm.	H mm.		COD.	€
1/4"	5,0	40	62,5	30,7	200 1	IVB10061	15,93
3/8"	7,0	44	74,5	34,7	120 1	IVB10062	17,05
1/2"	9,2	56	86,5	40,7	70 1	IVB10063	22,93
3/4"	12,5	59	88,5	43,2	50 1	IVB10064	26,75
1"	15,0	71	107,0	49,2	30 1	IVB10065	38,81
1 1/4"	20,0	78	107,0	52,8	24 1	IVB10066	59,33
1 1/2"	25,0	83	132,0	66,4	16 1	IVB10067	89,91
2"	32,0	95	132,0	72,2	12 1	IVB10068	111,13


**VALVOLA A SFERA 2 PEZZI PASSAGGIO TOTALE**

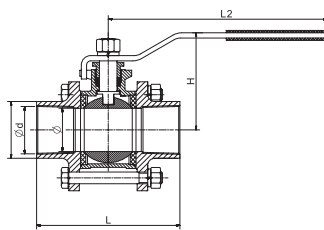
Corpo in Acciaio inox CF8M (AISI 316).  
Stelo in AISI 316.  
Maniglia in AISI 304 rivestita in PVC azzurro.  
Sede sfera in PTFE + 15% GF.  
Filettatura ISO 7/1 (filettatura R-Rp).  
Temperatura di lavoro da -20° C a 180° C.  
Pressione di lavoro in base al diametro,  
fino a PN 63.  
Lucchettabile.



Ø	D mm.	L mm.	L2 mm.	H mm.		COD.	€
1/4"	11,5	49	105	44	60 1	IVB20061	21,17
3/8"	12,5	49	105	44	60 1	IVB20062	21,17
1/2"	15,0	56	100	46	45 1	IVB20063	22,46
3/4"	20,0	64	135	53	25 1	IVB20064	29,58
1"	25,0	75	135	57	16 1	IVB20065	42,22
1 1/4"	32,0	86	170	71	10 1	IVB20066	63,74
1 1/2"	38,0	96	170	75	6 1	IVB20067	96,96
2"	50,0	116	190	96	4 1	IVB20068	135,06
2 1/2"	65,0	150	250	128	4 1	IVB20069	316,64
3"	76,0	168	250	135	2 1	IVB2006A	477,93
4"	94,0	214	335	160	2 1	IVB2006C	1.028,88


**VALVOLA A SFERA 3 PEZZI PASSAGGIO TOTALE - FILETTATA**

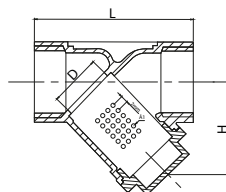
Corpo in Acciaio inox CF8M (AISI 316).  
Stelo in AISI 316.  
Maniglia in AISI 304 rivestita in PVC azzurro.  
Sede sfera in PTFE + 15% GF.  
Filettatura ISO 7/1 (filettatura R-Rp).  
Temperatura di lavoro da -20° C a 180° C.  
Pressione di lavoro in base al diametro,  
fino a PN 63.  
Lucchettabile.



Ø	d mm.	L mm.	L2 mm.	H mm.		COD.	€
1/4"	12,50	51	100	45	40 1	IVB30061	32,16
3/8"	12,50	51	100	45	36 1	IVB30062	33,63
1/2"	15,00	62	100	49	30 1	IVB30063	35,99
3/4"	20,00	69	112	60	16 1	IVB30064	48,04
1"	25,00	79	112	64	11 1	IVB30065	70,91
1 1/4"	32,00	96	145	80	6 1	IVB30066	102,78
1 1/2"	38,00	102	145	83	4 1	IVB30067	130,71
2"	50,00	124	165	97	2 1	IVB30068	225,85
2 1/2"	65,00	159	230	118	2 1	IVB30069	421,60
3"	76,00	179	230	125	1 1	IVB3006A	657,56
4"	94,00	220	300	169	1 1	IVB3006C	1.281,13


**FILTRO A "Y"**

Corpo in Acciaio inox CF8M (AISI 316).  
Temperatura di lavoro da -20° C a 160° C.  
Filettatura ISO 7/1 (filettatura R-Rp).  
Pressione di lavoro 800 WOG/PN 40.  
Guarnizione in PTFE.

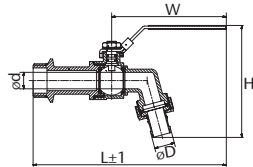


Ø	D mm.	L mm.	H mm.		COD.	€
1/2"	10	63	38	70 1	IVF00063	27,22
3/4"	20	80	55	45 1	IVF00064	37,98
1"	25	90	56	25 1	IVF00065	61,92
1 1/4"	32	108	60	14 1	IVF00066	73,91
1 1/2"	40	120	70	12 1	IVF00067	99,25
2"	50	142	82	6 1	IVF00068	135,18



## RUBINETTO A SFERA CON PORTAGOMMA

Corpo in Acciaio inox CF8M (AISI 316).  
Stelo in AISI 316.  
Leva in SS 301 rivestita in PVC azzurra.  
O-ring in viton.  
Filettatura BSP.  
Temperatura di lavoro: -20° C a 160° C.  
Pressione di lavoro: PN 16.  
Lucchettabile.

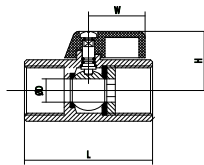


Ø	D mm.	L mm.	H mm.	W mm.		COD.	€
1/2"	13,0	145,0	87	92	40 1	IVG06003	38,51
3/4"	16,0	154,0	92	105	30 1	IVG06004	50,86
1"	27,5	183,5	115	105	20 1	IVG06005	62,56



## VALVOLA A SFERA MINI F/F

Corpo in Acciaio inox CF8M (AISI 316).  
Maniglia in alluminio.  
Sfera in Acciaio inox CF8M.  
O-ring in viton.  
Filettatura ISO 7/1 (filettatura R-Rp).

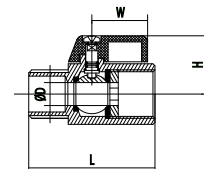


Ø	D mm.	L mm.	H mm.	W mm.		COD.	€
1/4"	7,0	42	25,0	22,8	160 1	IVBHH061	28,93
3/8"	7,0	42	25,0	22,8	160 1	IVBHH062	29,22
1/2"	9,2	47	28,3	22,8	80 1	IVBHH063	32,87



## VALVOLA A SFERA MINI M/F

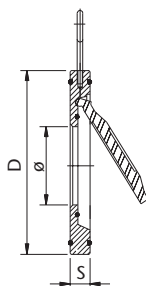
Corpo in Acciaio inox CF8M (AISI 316).  
Maniglia in alluminio.  
Sfera in Acciaio inox CF8M.  
O-ring in viton.  
Filettatura ISO 7/1 (filettatura R).



Ø	D mm.	L mm.	H mm.	W mm.		COD.	€
1/4"	7,0	42	25,0	22,8	160 1	IVBMH061	30,16
3/8"	7,0	42	25,0	22,8	160 1	IVBMH062	31,05
1/2"	9,2	47	28,3	22,8	80 1	IVBMH063	35,40



## VALVOLA DI RITEGNO WAFER SINGOLO BATTENTE



DN	S mm.	D mm.	Ø mm.	PESO Kg.	COD.	€
40	14	94	22	0,8	VF540040	102,84
50	14	107	32	1,0	VF540050	108,25
65	14	127	40	1,5	VF540065	133,30
80	14	142	54	2,0	VF540080	172,70
100	18	162	70	2,5	VF540100	244,55
125	18	192	92	3,5	VF540125	314,29
150	20	218	114	4,5	VF540150	410,66
200	22	273	154	7,5	VF540200	763,69
250	26	329	200	12,0	VF540250	1.142,90
300	28	384	235	17,5	VF540300	1.541,74

### CARATTERISTICHE TECNICHE

Pressione di lavoro: PN 16.  
Temperatura di lavoro da: -10° C a 150° C.  
Adattabile a flange secondo le norme DIN EN 1092-2 PN 16.

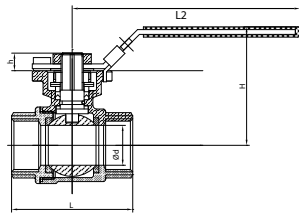
### COMPONENTI

Corpo: acciaio inox AISI 316  
Disco: acciaio inox AISI 316  
Sede corpo: viton  
Sede flangia: viton  
Fissaggio: acciaio inox AISI 316



## VALVOLA A SFERA 2 PEZZI PASSAGGIO TOTALE CON FLANGIA PER ATTUATORE - FILETTATA

Corpo in Acciaio inox CF8M (AISI 316).  
Stelo in AISI 316.  
Maniglia in AISI 304 rivestita in PVC azzurro.  
Sede sfera in PTFE + 15% GF.  
Filettatura ISO 7/1 (filettatura R-Rp).  
Temperatura di lavoro da -10° C a 150° C.  
Pressione di lavoro in base al diametro, fino a PN 63.  
Lucchettabile.  
Montaggio attuatore secondo ISO 5211.

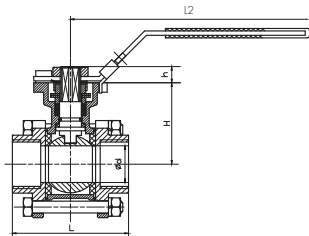


Ø	d mm.	L mm.	L2 mm.	H mm.	h mm.		COD.	€
1/4"	9,0	48,0	120,5	37,0	9	60 1	IVB2P061	23,99
3/8"	12,5	48,0	120,5	39,0	9	60 1	IVB2P062	23,99
1/2"	15,0	56,0	120,5	39,0	9	45 1	IVB2P063	27,28
3/4"	20,0	64,0	120,5	41,5	9	25 1	IVB2P064	38,93
1"	25,0	76,0	140,0	47,0	11	16 1	IVB2P065	51,57
1 1/4"	32,0	86,5	140,0	52,0	11	10 1	IVB2P066	76,26
1 1/2"	38,0	97,5	170,0	62,0	14	6 1	IVB2P067	97,37
2"	50,0	117,5	170,0	71,0	14	4 1	IVB2P068	150,70



## VALVOLA A SFERA 3 PEZZI PASSAGGIO TOTALE CON FLANGIA PER ATTUATORE - FILETTATA

Corpo in Acciaio inox CF8M (AISI 316).  
Stelo in AISI 316.  
Maniglia in AISI 304 rivestita in PVC azzurro.  
Sede sfera in PTFE + 15% GF.  
Filettatura ISO 7/1 (filettatura R-Rp).  
Temperatura di lavoro da -20° C a 180° C.  
Pressione di lavoro in base al diametro, fino a PN 63.  
Lucchettabile.  
Montaggio attuatore secondo ISO 5211.

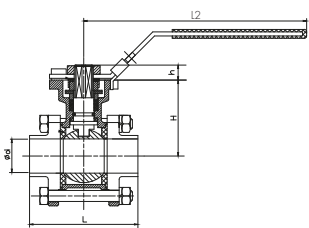


Ø	d mm.	L mm.	L2 mm.	H mm.	h mm.		COD.	€
1/2"	15	61	120,5	39,0	9	30 1	IVB3P063	37,57
3/4"	20	69	120,5	41,5	9	16 1	IVB3P064	57,98
1"	25	79	140,0	47,0	11	11 1	IVB3P065	69,97
1 1/4"	32	96	140,0	52,0	11	6 1	IVB3P066	115,95
1 1/2"	38	102	170,0	62,0	14	4 1	IVB3P067	148,76
2"	50	124	170,0	71,0	14	2 1	IVB3P068	214,27
2 1/2"	65	158	230,0	89,0	18	2 1	IVB3P069	522,44
3"	76	179	230,0	98,0	18	1 1	IVB3P06A	747,94
4"	94	220	300,0	129,0	22	1 1	IVB3P06C	1.134,19



## VALVOLA A SFERA 3 PEZZI PASSAGGIO TOTALE - A SALDARE (BUTT WELD)

Corpo in Acciaio inox CF8M (AISI 316).  
Stelo in AISI 316.  
Maniglia in AISI 304 rivestita in PVC azzurro.  
Sede sfera in PTFE + 15% GF.  
Filettatura ISO 7/1 (filettatura R-Rp).  
Temperatura di lavoro da -20° C a 180° C.  
Pressione di lavoro in base al diametro, fino a PN 63.  
Lucchettabile.  
Montaggio attuatore secondo ISO 5211.

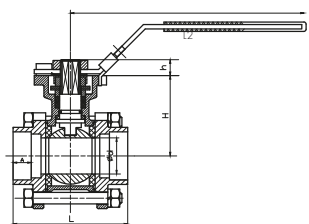


Ø	d mm.	L mm.	L2 mm.	H mm.	h mm.		COD.	€
1/2"	15	61	120,5	39,0	9	30 1	IVB3PB63	42,45
3/4"	20	69	120,5	41,5	9	16 1	IVB3PB64	57,98
1"	25	79	140,0	47,0	11	11 1	IVB3PB65	69,97
1 1/4"	32	96	140,0	52,0	11	6 1	IVB3PB66	115,95
1 1/2"	38	102	170,0	62,0	14	4 1	IVB3PB67	148,76
2"	50	124	170,0	71,0	14	2 1	IVB3PB68	214,27
2 1/2"	65	158	230,0	89,0	18	2 1	IVB3PB69	522,44
3"	76	179	230,0	98,0	18	1 1	IVB3PB6A	747,94
4"	94	220	300,0	129,0	22	1 1	IVB3PB6C	1.134,19



## VALVOLA A SFERA 3 PEZZI PASSAGGIO TOTALE - A TASCA (SOCKET WELD)

Corpo in Acciaio inox CF8M (AISI 316).  
Stelo in AISI 316.  
Maniglia in AISI 304 rivestita in PVC azzurro.  
Sede sfera in PTFE + 15% GF.  
Filettatura ISO 7/1 (filettatura R-Rp).  
Temperatura di lavoro da -20° C a 180° C.  
Pressione di lavoro in base al diametro, fino a PN 63.  
Lucchettabile.  
Montaggio attuatore secondo ISO 5211.  
Terminali a saldare Socket Weld ANSI B 16.11.

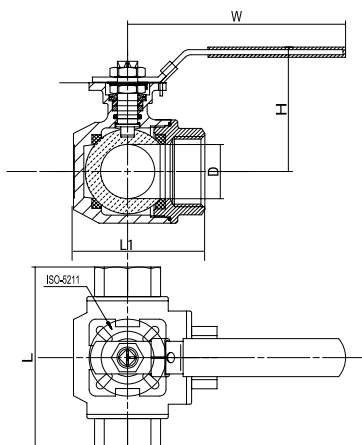


Ø	d mm.	L mm.	L2 mm.	H mm.	h mm.		COD.	€
1/2"	15	61	120,5	39,0	9	30 1	IVB3PS63	37,16
3/4"	20	69	120,5	41,5	9	16 1	IVB3PS64	57,98
1"	25	79	140,0	47,0	11	11 1	IVB3PS65	69,97
1 1/4"	32	96	140,0	52,0	11	6 1	IVB3PS66	115,95
1 1/2"	38	102	170,0	62,0	14	4 1	IVB3PS67	148,76
2"	50	124	170,0	71,0	14	2 1	IVB3PS68	214,27
2 1/2"	65	158	230,0	89,0	18	2 1	IVB3PS69	522,44
3"	76	179	230,0	98,0	18	1 1	IVB3PS6A	747,94
4"	94	220	300,0	129,0	22	1 1	IVB3PS6C	1.134,19

## VALVOLA A SFERA 3 VIE TIPO "T" O TIPO "L"



Ø	DN	L1 ±2 mm.	Ø D mm.	H mm.	W mm.	ISO 5211		COD. TIPO "T"	COD. TIPO "L"	€
1/4"	8	64	9,0	76	143	F04/03	15 1	IVBT0061	IVBL0061	120,80
3/8"	10	64	11,0	76	143	F04/03	15 1	IVBT0062	IVBL0062	120,80
1/2"	15	64	12,5	76	143	F04/03	13 1	IVBT0063	IVBL0063	122,75
3/4"	20	68	16,0	80	143	F04/03	7 1	IVBT0064	IVBL0064	146,80
1"	25	82	20,0	95	163	F05/04	5 1	IVBT0065	IVBL0065	324,20
1 1/4"	32	90	25,0	98	163	F05/04	4 1	IVBT0066	IVBL0066	317,80
1 1/2"	40	107	32,0	110	188	F07/05	3 1	IVBT0067	IVBL0067	438,45
2"	50	124	38,0	119	188	F07/05	2 1	IVBT0068	IVBL0068	689,43



### CARATTERISTICHE TECNICHE

Pressione di lavoro: PN 63/1000 WOG.  
 Temperatura di lavoro da: -20° C a 180° C.  
 Montaggio attuatore diretto secondo ISO 5211.  
 Filettatura ISO 7/1 (filettatura R-Rp).  
 Lucchettabile.

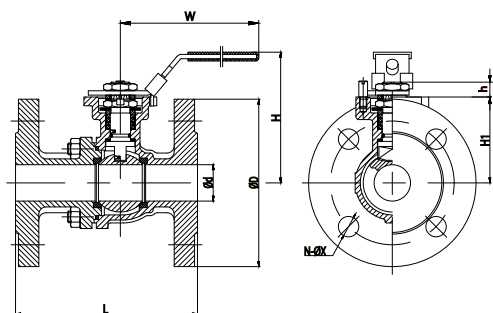
### COMPONENTI

**Corpo:** acciaio inox CF8M (AISI 316)  
**Guarnizione:** PTFE+15%GF  
**Guarnizione stelo:** viton  
**Stelo:** AISI 316  
**Leva:** AISI 304 rivestita in PVC azzurra  
**Sfera:** AISI 316

## VALVOLA A SFERA PASSAGGIO TOTALE 2 PEZZI CON FLANGIA



Ø	DN	L mm.	Ø d mm.	Ø D mm.	H mm.	W mm.	ISO 5211		COD.	€
1/2"	15	115	15	95	76	110	F03-F04	1	IVB20015	229,44
3/4"	20	120	20	105	81	110	F03-F04	1	IVB20020	293,06
1"	25	125	25	115	90	140	F04-F05	1	IVB20025	363,15
1 1/4"	32	130	32	140	102	140	F04-F05	1	IVB20032	507,33
1 1/2"	40	140	38	150	114	185	F05-F07	1	IVB20040	579,30
2"	50	150	50	165	122	185	F05-F07	1	IVB20050	762,93
2 1/2"	65	170	65	185	168	305	F07-F10	1	IVB20B65	1.102,97
3"	80	180	78	200	178	305	F07-F10	1	IVB20080	1.748,36
4"	100	190	100	220	198	305	F07-F10	1	IVB20100	2.561,86
5"	125	325	125	250	234	500	F10-F12	1	IVB20125	4.065,08
6"	150	350	150	285	250	645	F10-F12	1	IVB20150	5.682,67

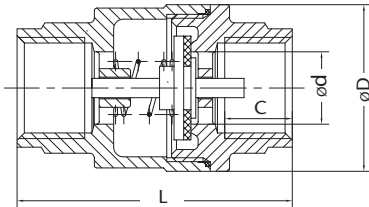


### CARATTERISTICHE TECNICHE

Pressione di lavoro: PN 40 da DN 15 a DN 40; PN 16 da DN 50 a DN 150.  
 Temperatura di lavoro da -30° C a 180° C.  
 Flangia DIN 2635 da DN 15 a DN 40; DIN 2633 da DN 50 a DN 150.  
 Distanza tra le facce secondo DIN 3202-F4.  
 Antincendio API607.  
 Antistatica.  
 Montaggio attuatore secondo ISO 5211.  
 Lucchettabile.  
 Certificazione ATEX secondo direttiva 2014/34/EU.

### COMPONENTI

**Corpo:** acciaio inox CF8M (AISI 316)  
**Guarnizione:** PTFE+15%GF  
**Guarnizione stelo:** vitón  
**Stelo:** AISI 316  
**Leva:** A276 201 rivestita en PVC azzurra  
**Sfera:** AISI 316

**VALVOLA INOX DI RITEGNO FILETTATA PN 63**


Ø	Ø d mm.	Ø D mm.	C mm.	L mm.	COD.	€
1/4"	10,5	30,0	12	54	IV130601	31,46
3/8"	13,0	30,0	12	54	IV130602	31,46
1/2"	15,0	34,5	14	57	IV130603	31,46
3/4"	20,0	41,5	15	64	IV130604	38,75
1"	25,0	48,6	18	80	IV130605	64,03
1 1/4"	32,0	60,5	17	82	IV130606	89,67
1 1/2"	40,0	71,0	18	93	IV130607	111,48
2"	50,0	87,0	17	100	IV130608	175,28

**CARATTERISTICHE TECNICHE**

Filettatura ISO 7/1.

Temperatura di lavoro da: -30° C a 150° C.

Pressione di lavoro: PN 63.

Installazione in qualsiasi posizione, purché nel rispetto della direzione dalla freccia.

**COMPONENTI**

Corpo: CF8M (AISI 316)

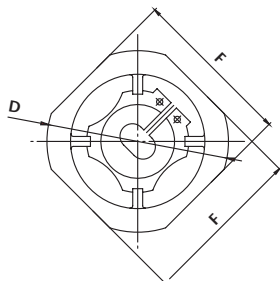
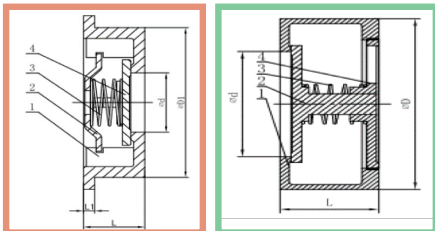
Molla: AISI 316

Disco: CF8M (AISI 316)

Guarnizione disco: viton

Coperchio: CF8M (AISI 316)

Guarnizione: PTFE

**VALVOLA INOX DI RITEGNO A DISCO TIPO WAFER PN 63**


Ø	DN	Ø D mm.	F mm.	Ø D1 mm.	L1	L mm.	COD.	€
1/2"	15	53	46	43	4	16,5	IV566015	28,75
3/4"	20	63	55	53	5	19,5	IV566020	35,10
1"	25	73	65	63	4	22,0	IV566025	41,10
1 1/4"	32	84	78	75	6	28,0	IV566032	62,62
1 1/2"	40	94	88	86	6	32,0	IV566040	85,50
2"	50	107	98	94	7	40,0	IV566050	114,07
2 1/2"	65	126	118	115	7	46,0	IV566065	170,17
3"	80	144	134	130	8	50,0	IV566080	224,79
4"	100	164	154	152	9	60,0	IV566100	325,34
5"	125	190				82,0	IV566125	622,75
6"	150	217				102,0	IV566150	908,05

**CARATTERISTICHE TECNICHE**

Pressione di lavoro: PN 63.

Temperatura di lavoro da: -20° C a 425° C.

Utilizzo per acqua, gas, vapore, olii e acidi.

Installazione in qualsiasi posizione, purché nel rispetto della direzione dalla freccia.

Distanza tra le facce secondo EN 558 serie 49 (salvo DN 125 y 150).

**COMPONENTI**

Corpo: CF8M (AISI 316)

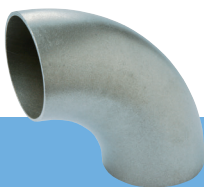
Supporto della molla: AISI 304

Molla: AISI 304

Disco: CF8M (AISI 316)



# RACCORDI INOX A SALDARE - MISURE ISO



CURVE 90° RICAIVATE DA TUBO SALDATO



Ø	Ø mm	DN	AISI 304L				AISI 316L					
			DIMA 3				DIMA 3			DIMA 5 **		
			COD.	€ SPESS. 2 mm	COD.	€ SPESS. 3 mm	COD.	€ SPESS. 2 mm	COD.	€ SPESS. 3 mm	COD.	€ SPESS. 2 mm
3/8"	17,2	10	IC934202	*			IC936202	*				
1/2"	21,3	15	IC934203	*			IC936203	*			IC956203	*
3/4"	26,9	20	IC934204	*			IC936204	*			IC956204	*
1"	33,7	25	IC934205	*	IC934305	*	IC936205	*	IC936305	*	IC956205	*
1 1/4"	42,4	32	IC934206	*	IC934306	*	IC936206	*	IC936306	*	IC956206	*
1 1/2"	48,3	40	IC934207	*	IC934307	*	IC936207	*	IC936307	*	IC956207	*
2"	60,3	50	IC934208	*	IC934308	*	IC936208	*	IC936308	*	IC956208	*
2 1/2"	76,1	65	IC934209	*	IC934309	*	IC936209	*	IC936309	*	IC956209	*
3"	88,9	80	IC93420A	*	IC93430A	*	IC93620A	*	IC93630A	*	IC95620A	*
3 1/2"	101,6	90	IC93420B	*	IC93430B	*	IC93620B	*	IC93630B	*		
4"	114,3	100	IC93420C	*	IC93430C	*	IC93620C	*	IC93630C	*	IC95620C	*
5"	139,7	125	IC93420D	*	IC93430D	*	IC93620D	*	IC93630D	*	IC95620D	*
6"	168,3	150	IC93420E	*	IC93430E	*	IC93620E	*	IC93630E	*	IC95620E	*
8"	219,1	200	IC93420F	*	IC93430F	*	IC93620F	*	IC93630F	*	IC95620F	*
10"	273,0	250	IC93420G	*	IC93430G	*	IC93620G	*	IC93630G	*		
12"	323,9	300	IC93420H	*	IC93430H	*	IC93620H	*	IC93630H	*		
14"	355,6	350			IC93430I	*						
16"	406,4	400			IC93430L	*						

Dalla misura 17,2 mm. alla 60,3 mm. si forniscono a multipli di 5 unità.

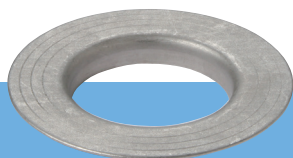
\*\* Su richiesta disponibili in AISI 304L e/o in spessori differenti.



CURVE 45° RICAIVATE DA TUBO SALDATO

Ø	Ø mm	DN	AISI 316L			
			DIMA 3			
			COD.	€ SPESS. 2 mm	COD.	€ SPESS. 3 mm
3/8"	17,2	10	IC436202	*		
1/2"	21,3	15	IC436203	*		
3/4"	26,9	20	IC436204	*		
1"	33,7	25	IC436205	*	IC436305	*
1 1/4"	42,4	32	IC436206	*	IC436306	*
1 1/2"	48,3	40	IC436207	*	IC436307	*
2"	60,3	50	IC436208	*	IC436308	*
2 1/2"	76,1	65	IC436209	*	IC436309	*
3"	88,9	80	IC43620A	*	IC43630A	*
3 1/2"	101,6	90	IC43620B	*	IC43630B	*
4"	114,3	100	IC43620C	*	IC43630C	*
5"	139,7	125	IC43620D	*	IC43630D	*
6"	168,3	150	IC43620E	*	IC43630E	*
8"	219,1	200	IC43620F	*	IC43630F	*

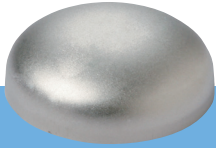
Disponibili anche a 30° e 60° su richiesta.


**CARTELLE DI APPOGGIO**

Ø	Ø mm	DN	AISI 304L				AISI 316L			
			COD.	€ SPESS. 2 mm	COD.	€ SPESS. 3 mm	COD.	€ SPESS. 2 mm	COD.	€ SPESS. 3 mm
1/2"	21,3	15	ICT04203	*	ICT04303	*	ICT06203	*	ICT06303	*
3/4"	26,9	20	ICT04204	*	ICT04304	*	ICT06204	*	ICT06304	*
1"	33,7	25	ICT04205	*	ICT04305	*	ICT06205	*	ICT06305	*
1 1/4"	42,4	32	ICT04206	*	ICT04306	*	ICT06206	*	ICT06306	*
1 1/2"	48,3	40	ICT04207	*	ICT04307	*	ICT06207	*	ICT06307	*
2"	60,3	50	ICT04208	*	ICT04308	*	ICT06208	*	ICT06308	*
2 1/2"	76,1	65	ICT04209	*	ICT04309	*	ICT06209	*	ICT06309	*
3"	88,9	80	ICT0420A	*	ICT0430A	*	ICT0620A	*	ICT0630A	*
3 1/2"	101,6	90	ICT0420B	*	ICT0430B	*	ICT0620B	*	ICT0630B	*
4"	114,3	100	ICT0420C	*	ICT0430C	*	ICT0620C	*	ICT0630C	*
5"	139,7	125	ICT0420D	*	ICT0430D	*	ICT0620D	*	ICT0630D	*
6"	168,3	150	ICT0420E	*	ICT0430E	*	ICT0620E	*	ICT0630E	*
8"	219,1	200	ICT0420F	*	ICT0430F	*	ICT0620F	*	ICT0630F	*
10"	273,0	250	ICT0420G	*	ICT0430G	*	ICT0620G	*	ICT0630G	*
12"	323,9	300	ICT0420H	*	ICT0430H	*	ICT0620H	*	ICT0630H	*


**TI**

Ø	Ø mm	DN	AISI 304L				AISI 316L			
			COD.	€ SPESS. 2 mm	COD.	€ SPESS. 3 mm	COD.	€ SPESS. 2 mm	COD.	€ SPESS. 3 mm
1/2"	21,3	15	IT104203	*	IT104303	*	IT106203	*	IT106303	*
3/4"	26,9	20	IT104204	*	IT104304	*	IT106204	*	IT106304	*
1"	33,7	25	IT104205	*	IT104305	*	IT106205	*	IT106305	*
1 1/4"	42,4	32	IT104206	*	IT104306	*	IT106206	*	IT106306	*
1 1/2"	48,3	40	IT104207	*	IT104307	*	IT106207	*	IT106307	*
2"	60,3	50	IT104208	*	IT104308	*	IT106208	*	IT106308	*
2 1/2"	76,1	65	IT104209	*	IT104309	*	IT106209	*	IT106309	*
3"	88,9	80	IT10420A	*	IT10430A	*	IT10620A	*	IT10630A	*
3 1/2"	101,6	90	IT10420B	*	IT10430B	*	IT10620B	*	IT10630B	*
4"	114,3	100	IT10420C	*	IT10430C	*	IT10620C	*	IT10630C	*
5"	139,7	125	IT10420D	*	IT10430D	*	IT10620D	*	IT10630D	*
6"	168,3	150	IT10420E	*	IT10430E	*	IT10620E	*	IT10630E	*
8"	219,1	200	IT10420F	*	IT10430F	*	IT10620F	*	IT10630F	*
10"	273,0	250	IT10420G	*	IT10430G	*	IT10620G	*	IT10630G	*
12"	323,9	300	IT10420H	*	IT10430H	*	IT10620H	*	IT10630H	*
14"	355,6	350			IT10430I	*			IT10630I	*
16"	406,4	400			IT10430L	*			IT10630L	*



FONDI BOMBATI



Ø	Ø mm	DN	AISI 304L				AISI 316L			
			COD.	€ SPESS. 2 mm	COD.	€ SPESS. 3 mm	COD.	€ SPESS. 2 mm	COD.	€ SPESS. 3 mm
1/2"	21,3	15	ICA04203	*	ICA04303	*	ICA06203	*	ICA06303	*
3/4"	26,9	20	ICA04204	*	ICA04304	*	ICA06204	*	ICA06304	*
1"	33,7	25	ICA04205	*	ICA04305	*	ICA06205	*	ICA06305	*
1 1/4"	42,4	32	ICA04206	*	ICA04306	*	ICA06206	*	ICA06306	*
1 1/2"	48,3	40	ICA04207	*	ICA04307	*	ICA06207	*	ICA06307	*
2"	60,3	50	ICA04208	*	ICA04308	*	ICA06208	*	ICA06308	*
2 1/2"	76,1	65	ICA04209	*	ICA04309	*	ICA06209	*	ICA06309	*
3"	88,9	80	ICA0420A	*	ICA0430A	*	ICA0620A	*	ICA0630A	*
3 1/2"	101,6	90	ICA0420B	*			ICA0620B	*		
4"	114,3	100	ICA0420C	*	ICA0430C	*	ICA0620C	*	ICA0630C	*
5"	139,7	125	ICA0420D	*	ICA0430D	*	ICA0620D	*	ICA0630D	*
6"	168,3	150	ICA0420E	*	ICA0430E	*	ICA0620E	*	ICA0630E	*
8"	219,1	200	ICA0420F	*	ICA0430F	*	ICA0620F	*	ICA0630F	*
10"	273,0	250	ICA0420G	*	ICA0430G	*	ICA0620G	*	ICA0630G	*
12"	323,9	300	ICA0420H	*	ICA0430H	*	ICA0620H	*	ICA0630H	*
14"	355,6	350			ICA0430I	*				
16"	406,4	400			ICA0430L	*				


**RIDUZIONI CONCENTRICHE**

Ø	Ø mm	DN	H	AISI 304L				AISI 316L			
				COD.	€ SPESS. 2 mm	COD.	€ SPESS. 3 mm	COD.	€ SPESS. 2 mm	COD.	€ SPESS. 3 mm
3/4" x 3/8"	26,9 x 17,2	20x10	38	IRC04242	*						
3/4" x 1/2"	26,9 x 21,3	20x15	38	IRC04243	*	IRC04343	*	IRC06243	*	IRC06343	*
1" x 3/8"	33,7 x 17,2	25x10	51	IRC04252	*			IRC06252	*		
1" x 1/2"	33,7 x 21,3	25x15	51	IRC04253	*	IRC04353	*	IRC06253	*	IRC06353	*
1" x 3/4"	33,7 x 26,9	25x20	51	IRC04254	*	IRC04354	*	IRC06254	*	IRC06354	*
1 1/4" x 1/2"	42,4 x 21,3	32x15	51	IRC04263	*	IRC04363	*	IRC06263	*	IRC06363	*
1 1/4" x 3/4"	42,4 x 26,9	32x20	51	IRC04264	*	IRC04364	*	IRC06264	*	IRC06364	*
1 1/4" x 1"	42,4 x 33,7	32x25	51	IRC04265	*	IRC04365	*	IRC06265	*	IRC06365	*
1 1/2" x 1/2"	48,3 x 21,3	40x15	64	IRC04273	*	IRC04373	*	IRC06273	*	IRC06373	*
1 1/2" x 3/4"	48,3 x 26,9	40x20	64	IRC04274	*	IRC04374	*	IRC06274	*	IRC06374	*
1 1/2" x 1"	48,3 x 33,7	40x25	64	IRC04275	*	IRC04375	*	IRC06275	*	IRC06375	*
1 1/2" x 1 1/4"	48,3 x 42,4	40x32	64	IRC04276	*	IRC04376	*	IRC06276	*	IRC06376	*
2" x 1/2"	60,3 x 21,3	50x15	76	IRC04283	*			IRC06283	*		
2" x 3/4"	60,3 x 26,9	50x20	76	IRC04284	*			IRC06284	*		
2" x 1"	60,3 x 33,7	50x25	76	IRC04285	*	IRC04385	*	IRC06285	*	IRC06385	*
2" x 1 1/4"	60,3 x 42,4	50x32	76	IRC04286	*	IRC04386	*	IRC06286	*	IRC06386	*
2" x 1 1/2"	60,3 x 48,3	50x40	76	IRC04287	*	IRC04387	*	IRC06287	*	IRC06387	*
2 1/2" x 3/4"	76,1 x 26,9	65x20	89	IRC04294	*			IRC06294	*		
2 1/2" x 1"	76,1 x 33,7	65x25	89	IRC04295	*	IRC04395	*	IRC06295	*	IRC06395	*
2 1/2" x 1 1/4"	76,1 x 42,4	65x32	89	IRC04296	*	IRC04396	*	IRC06296	*	IRC06396	*
2 1/2" x 1 1/2"	76,1 x 48,3	65x40	89	IRC04297	*	IRC04397	*	IRC06297	*	IRC06397	*
2 1/2" x 2"	76,1 x 60,3	65x50	89	IRC04298	*	IRC04398	*	IRC06298	*	IRC06398	*

**SU RICHIESTA DISPONIBILI IN VERSIONE ECCENTRICA**



## RIDUZIONI CONCENTRICHE

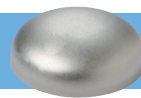


Ø	Ø mm	DN	H	AISI 304L				AISI 316L			
				COD.	€ SPESS. 2 mm	COD.	€ SPESS. 3 mm	COD.	€ SPESS. 2 mm	COD.	€ SPESS. 3 mm
3" x 1"	88,9 x 33,7	80x25	89	IRC042A5	*	IRC043A5	*	IRC062A5	*	IRC063A5	*
3" x 1 1/4"	88,9 x 42,4	80x32	89	IRC042A6	*	IRC043A6	*	IRC062A6	*	IRC063A6	*
3" x 1 1/2"	88,9 x 48,3	80x40	89	IRC042A7	*	IRC043A7	*	IRC062A7	*	IRC063A7	*
3" x 2"	88,9 x 60,3	80x50	89	IRC042A8	*	IRC043A8	*	IRC062A8	*	IRC063A8	*
3" x 2 1/2"	88,9 x 76,1	80x65	89	IRC042A9	*	IRC043A9	*	IRC062A9	*	IRC063A9	*
4" x 1 1/4"	114,3 x 42,4	100x32	102	IRC042C6	*	IRC043C6	*				
4" x 1 1/2"	114,3 x 48,4	100x40	102	IRC042C7	*	IRC043C7	*	IRC062C7	*		
4" x 2"	114,3 x 60,3	100x50	102	IRC042C8	*	IRC043C8	*	IRC062C8	*	IRC063C8	*
4" x 2 1/2"	114,3 x 76,1	100x65	102	IRC042C9	*	IRC043C9	*	IRC062C9	*	IRC063C9	*
4" x 3"	114,3 x 88,9	100x80	102	IRC042CA	*	IRC043CA	*	IRC062CA	*	IRC063CA	*
5" x 1 1/2"	139,7 x 48,3	125x40	127	IRC042D7	*			IRC062D7	*		
5" x 2"	139,7 x 60,3	125x50	127	IRC042D8	*	IRC043D8	*	IRC062D8	*	IRC063D8	*
5" x 2 1/2"	139,7 x 76,1	125x65	127	IRC042D9	*	IRC043D9	*	IRC062D9	*	IRC063D9	*
5" x 3"	139,7 x 88,9	125x80	127	IRC042DA	*	IRC043DA	*	IRC062DA	*	IRC063DA	*
5" x 4"	139,7 x 114,3	125x100	127	IRC042DC	*	IRC043DC	*	IRC062DC	*	IRC063DC	*
6" x 2"	168,3 x 60,3	150x50	140	IRC042E8	*			IRC062E8	*		
6" x 2 1/2"	168,3 x 76,1	150x65	140	IRC042E9	*	IRC043E9	*	IRC062E9	*	IRC063E9	*
6" x 3"	168,3 x 88,9	150x80	140	IRC042EA	*	IRC043EA	*	IRC062EA	*	IRC063EA	*
6" x 4"	168,3 x 114,3	150x100	140	IRC042EC	*	IRC043EC	*	IRC062EC	*	IRC063EC	*
6" x 5"	168,3 x 139,7	150x125	140	IRC042ED	*	IRC043ED	*	IRC062ED	*	IRC063ED	*
8" x 3"	219,1 x 88,9	200x80	152	IRC042FA	*			IRC062FA	*	IRC063FA	*
8" x 4"	219,1 x 114,3	200x100	152	IRC042FC	*	IRC043FC	*	IRC062FC	*	IRC063FC	*
8" x 5"	219,1 x 139,7	200x125	152	IRC042FD	*	IRC043FD	*	IRC062FD	*	IRC063FD	*
8" x 6"	219,1 x 168,3	200x150	152	IRC042FE	*	IRC043FE	*	IRC062FE	*	IRC063FE	*
10" x 6"	273 x 168,3	250x150	178	IRC042GE	*	IRC043GE	*	IRC062GE	*	IRC063GE	*
10" x 8"	273 x 219,1	250x200	178	IRC042GF	*	IRC043GF	*	IRC062GF	*	IRC063GF	*
12" x 8"	323,9 x 219,1	300x200	203	IRC042HF	*	IRC043HF	*	IRC062HF	*	IRC063HF	*
12" x 10"	323,9 x 273	300x250	203	IRC042HG	*	IRC043HG	*	IRC062HG	*	IRC063HG	*


**RACCORDI INOX A SALDARE - MISURE MILIMETRICHE**

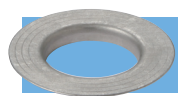
**CURVE 90° 3D RICAVATE DA TUBO SALDATO**

Ø	Ø mm.	DN	R mm.	SPESS. mm.	AISI 304L		AISI 316L	
					COD.	€	COD.	€
1/2"	18,0	15	25,0	1,5	IC341018	*	IC361018	*
1/2"	20,0	15	30,0	1,5	IC341020	*	IC361020	*
3/4"	23,0	20	35,0	1,5	IC341023	*		
3/4"	25,0	20	37,0	1,5	IC341025	*	IC361025	*
3/4"	28,0	20	40,0	1,5	IC341028	*	IC361028	*
3/4"	30,0	20	45,0	1,5	IC341030	*	IC361030	*
1"	33,0	25	50,0	1,5	IC341033	*	IC361033	*
1 1/4"	35,0	32	52,5	1,5	IC341035	*		
1 1/4"	38,0	32	55,0	1,5	IC341038	*		
1 1/2"	40,0	40	60,0	1,5	IC341040	*	IC361040	*
1 1/2"	43,0	40	65,0	1,5	IC341043	*	IC361043	*
2"	50,8	50	76,0	1,5	IC341051	*	IC361050	*
2"	53,0	50	80,0	1,5	IC341053	*	IC361053	*
2"	63,5	50	95,0	1,5	IC341063	*	IC361063	*
2"	54,0	50	80,0	2,0	IC342054	*		
2"	57,0	50	85,5	2,0	IC342057	*		
2 1/2"	70,0	65	92,0	2,0	IC342070	*	IC362070	*
2 1/2"	73,0	65	110,0	1,5	IC341073	*	IC361073	*
2 1/2"	76,0	65	115,0	1,5	IC341076	*	IC361076	*
3"	84,0	80	125,0	2,0	IC342084	*	IC362084	*
4"	104,0	100	155,0	2,0	IC342104	*	IC362104	*
5"	129,0	125	190,0	2,0	IC342129	*	IC362129	*
6"	154,0	150	225,0	2,0	IC342154	*	IC362154	*
8"	204,0	200	300,0	2,0	IC342204	*	IC362204	*
10"	254,0	250	380,0	2,0	IC342254	*		


**TI**

**FONDI BOMBATI**

Ø mm.	DN	SPESS. mm.	AISI 304L		AISI 316L	
			COD.	€	COD.	€
25,0	20	1,5	ITM41025	*	ITM61025	*
28,0	20	1,5	ITM41028	*	ITM61028	*
33,0	25	1,5	ITM41033	*	ITM61033	*
43,0	40	1,5	ITM41043	*	ITM61043	*
50,8	50	1,5	ITM41050	*	ITM61050	*
53,0	50	1,5	ITM41053	*	ITM61053	*
63,5	50	1,5	ITM41063	*	ITM61063	*
73,0	65	1,5	ITM41073	*	ITM61073	*
84,0	80	2,0	ITM42084	*	ITM62084	*
104,0	100	2,0	ITM42104	*	ITM62104	*
129,0	125	2,0	ITM42129	*	ITM62129	*
154,0	150	2,0	ITM42154	*	ITM62154	*
204,0	200	2,0	ITM42204	*	ITM62204	*
254,0	250	2,0	ITM42254	*	ITM62254	*
304,0	300	2,0			ITM62304	*
354,0	300	2,0			ITM62354	*

Ø mm.	DN	SPESS. mm.	AISI 304L		AISI 316L	
			COD.	€	COD.	€
25,0	20	1,5	ICAM4025	*	ICAM6025	*
28,0	20	1,5	ICAM4028	*	ICAM6028	*
33,0	25	1,5	ICAM4033	*	ICAM6033	*
43,0	40	1,5	ICAM4043	*	ICAM6043	*
50,8	50	1,5	ICAM4050	*	ICAM6050	*
53,0	50	1,5	ICAM4053	*	ICAM6053	*
63,5	50	1,5	ICAM4063	*	ICAM6063	*
70,0	65	2,0	ICAM4070	*	ICAM6070	*
73,0	65	1,5	ICAM4073	*	ICAM6073	*
84,0	80	2,0	ICAM4084	*	ICAM6084	*
104,0	100	2,0	ICAM4104	*	ICAM6104	*
129,0	125	2,0	ICAM4129	*	ICAM6129	*
154,0	150	2,0	ICAM4154	*	ICAM6154	*
204,0	200	2,0	ICAM4204	*	ICAM6204	*
254,0	250	2,0	ICAM4254	*	ICAM6254	*
304,0	300	2,0	ICAM4304	*	ICAM6304	*
354,0	300	2,0	ICAM4354	*	ICAM6354	*



## CARTELLE DI APPOGGIO

Ø	DN	SPESS. mm.	AISI 304L		AISI 316L	
			COD.	€	COD.	€
25,0	20	1,5	ICM41025	*	ICM61025	*
28,0	20	1,5	ICM41028	*	ICM61028	*
33,0	25	1,5	ICM41033	*	ICM61033	*
43,0	40	1,5	ICM41043	*	ICM61043	*
50,8	50	1,5	ICM41050	*	ICM61050	*
53,0	50	1,5	ICM41053	*	ICM61053	*
63,5	50	1,5	ICM41063	*	ICM61063	*
70,0	65	2,0	ICM42070	*	ICM61073	*
73,0	65	1,5	ICM41073	*	ICM62070	*
84,0	80	2,0	ICM42084	*	ICM62084	*
104,0	100	2,0	ICM42104	*	ICM62104	*
129,0	125	2,0	ICM42129	*	ICM62129	*
154,0	150	2,0	ICM42154	*	ICM62154	*
204,0	200	2,0	ICM42204	*	ICM62204	*
254,0	250	2,0	ICM42254	*	ICM62254	*
304,0	300	2,0	ICM42304	*	ICM62304	*
354,0	300	2,0	ICM42354	*	ICM62354	*



## RIDUZIONI CONCENTRICHE

Ø mm.	DN	SPESS. mm.	AISI 304L		AISI 316L	
			COD.	€	COD.	€
53,0 x 43,0	50 x 40	1,5	IRM45343	*	IRM65343	*
63,5 x 43,0	50 x 40	1,5	IRM46343	*	IRM66343	*
63,5 x 53,0	50 x 50	1,5	IRM46353	*	IRM66353	*
73,0 x 43,0	65 x 40	2,0	IRM47343	*	IRM67343	*
73,0 x 53,0	65 x 50	2,0	IRM47353	*	IRM67353	*
73,0 x 63,5	65 x 50	2,0	IRM47363	*	IRM67363	*
84,0 x 43,0	80 x 40	2,0	IRM48443	*	IRM68443	*
84,0 x 53,0	80 x 50	2,0	IRM48453	*	IRM68453	*
84,0 x 63,5	80 x 50	2,0	IRM48463	*	IRM68463	*
84,0 x 73,0	80 x 65	2,0	IRM48473	*	IRM68473	*
104,0 x 43,0	100 x 40	2,0	IRM41043	*	IRM61043	*
104,0 x 53,0	100 x 50	2,0	IRM41053	*	IRM61053	*
104,0 x 63,5	100 x 50	2,0	IRM41063	*	IRM61063	*
104,0 x 73,0	100 x 65	2,0	IRM41073	*	IRM61073	*
104,0 x 84,0	100 x 80	2,0	IRM41084	*	IRM61084	*
129,0 x 73,0	125 x 65	2,0	IRM41273	*	IRM61210	*
129,0 x 84,0	125 x 80	2,0	IRM41284	*	IRM61273	*
129,0 x 104,0	125 x 100	2,0	IRM41210	*	IRM61284	*
154,0 x 73,0	150 x 65	2,0	IRM41573	*	IRM61510	*
154,0 x 84,0	150 x 80	2,0	IRM41584	*	IRM61512	*
154,0 x 104,0	150 x 100	2,0	IRM41510	*	IRM61573	*
154,0 x 129,0	150 x 125	2,0	IRM41512	*	IRM61584	*
204,0 x 104,0	200 x 100	2,0	IRM42010	*	IRM62010	*
204,0 x 129,0	200 x 125	2,0	IRM42012	*	IRM62012	*
204,0 x 154,0	200 x 150	2,0	IRM42015	*	IRM62015	*

**RACCORDI A SALDARE - NORMA ASTM - SCH. 10S RICAVATI DA TUBO SALDATO**

**CURVA LR 90°**

Ø	Ø EXT mm.	SPESS. mm.	AISI 304L		AISI 316L	
			COD.	€	COD.	€
1/2"	21,3	2,11	I1CL940M	*	I1CL960M	*
3/4"	26,7	2,11	I1CL940T	*	I1CL960T	*
1"	33,4	2,77	I1CL9401	*	I1CL9601	*
1 1/4"	42,2	2,77	I1CL941C	*	I1CL961C	*
1 1/2"	48,3	2,77	I1CL941M	*	I1CL961M	*
2"	60,3	2,77	I1CL9402	*	I1CL9602	*
2 1/2"	73,0	3,05	I1CL942M	*	I1CL962M	*
3"	88,9	3,05	I1CL9403	*	I1CL9603	*
4"	114,3	3,05	I1CL9404	*	I1CL9604	*
5"	141,3	3,40	I1CL9405	*	I1CL9605	*
6"	168,3	3,40	I1CL9406	*	I1CL9606	*
8"	219,1	3,76	I1CL9408	*	I1CL9608	*
10"	273,0	4,19	I1CL9410	*	I1CL9610	*


**TI**

Ø	Ø EXT mm.	SPESS. mm.	AISI 304L		AISI 316L	
			COD.	€	COD.	€
1/2"	21,3	2,11	I1T4000M	*	I1T6000M	*
3/4"	26,7	2,11	I1T4000T	*	I1T6000T	*
1"	33,4	2,77	I1T40001	*	I1T60001	*
1 1/4"	42,2	2,77	I1T4001C	*	I1T6001C	*
1 1/2"	48,3	2,77	I1T4001M	*	I1T6001M	*
2"	60,3	2,77	I1T40002	*	I1T60002	*
2 1/2"	73,0	3,05	I1T4002M	*	I1T6002M	*
3"	88,9	3,05	I1T40003	*	I1T60003	*
4"	114,3	3,05	I1T40004	*	I1T60004	*
5"	141,3	3,40	I1T40005	*	I1T60005	*
6"	168,3	3,40	I1T40006	*	I1T60006	*
8"	219,1	3,76	I1T40008	*	I1T60008	*


**FONDI BOMBATI**

Ø	Ø EXT mm.	SPESS. mm.	AISI 304L		AISI 316L	
			COD.	€	COD.	€
1/2"	21,3	2,11	I1CC400M	*	I1CC600M	*
3/4"	26,7	2,11	I1CC400T	*	I1CC600T	*
1"	33,4	2,77	I1CC4001	*	I1CC6001	*
1 1/4"	42,2	2,77	I1CC401C	*	I1CC601C	*
1 1/2"	48,3	2,77	I1CC401M	*	I1CC601M	*
2"	60,3	2,77	I1CC4002	*	I1CC6002	*
2 1/2"	73,0	3,05	I1CC402M	*	I1CC602M	*
3"	88,9	3,05	I1CC4003	*	I1CC6003	*
4"	114,3	3,05	I1CC4004	*	I1CC6004	*
5"	141,3	3,40	I1CC4005	*	I1CC6005	*
6"	168,3	3,40	I1CC4006	*	I1CC6006	*
8"	219,1	3,76	I1CC4008	*	I1CC6008	*


**STUB END**

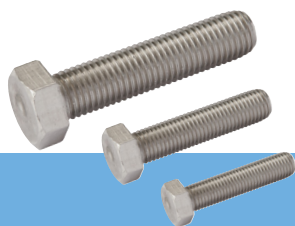
Ø	Ø EXT mm.	SPESS. mm.	AISI 304L		AISI 316L	
			COD.	€	COD.	€
1/2"	21,3	2,11	I1SE400M	*	I1SE600M	*
3/4"	26,7	2,11	I1SE400T	*	I1SE600T	*
1"	33,4	2,77	I1SE4001	*	I1SE6001	*
1 1/4"	42,2	2,77	I1SE401C	*	I1SE601C	*
1 1/2"	48,3	2,77	I1SE401M	*	I1SE601M	*
2"	60,3	2,77	I1SE4002	*	I1SE6002	*
2 1/2"	73,0	3,05	I1SE402M	*	I1SE602M	*
3"	88,9	3,05	I1SE4003	*	I1SE6003	*
4"	114,3	3,05	I1SE4004	*	I1SE6004	*
5"	141,3	3,40	I1SE4005	*	I1SE6005	*
6"	168,3	3,40	I1SE4006	*	I1SE6006	*
8"	219,1	3,76	I1SE4008	*	I1SE6008	*
10"	273,0	4,19	I1SE4010	*	I1SE6010	*


**RIDUZIONE CONCENTRICA**


Ø	Ø EXT mm.	AISI 304L		AISI 316L	
		COD.	€	COD.	€
3/4" x 1/2"	26,7 x 21,3	I1R40T0M	*	I1R60T0M	*
1" x 1/2"	33,4 x 21,3	I1R4010M	*	I1R6010M	*
1" x 3/4"	33,4 x 26,7	I1R4010T	*	I1R6010T	*
1 1/4" x 3/4"	42,2 x 26,7	I1R41C0T	*	I1R61C0T	*
1 1/4" x 1"	42,2 x 33,4	I1R41C01	*	I1R61C01	*
1 1/2" x 3/4"	48,3 x 26,7	I1R41M0T	*	I1R61M0T	*
1 1/2" x 1"	48,3 x 33,4	I1R41M01	*	I1R61M01	*
1 1/2" x 1 1/4"	48,3 x 42,2	I1R41M1C	*	I1R61M1C	*
2" x 1"	60,3 x 33,4	I1R40201	*	I1R60201	*
2" x 1 1/4"	60,3 x 42,2	I1R4021C	*	I1R6021C	*
2" x 1 1/2"	60,3 x 48,3	I1R4021M	*	I1R6021M	*
2 1/2" x 1 1/2"	73,0 x 48,3	I1R42M1M	*	I1R62M1M	*
2 1/2" x 2"	73,0 x 60,3	I1R42M02	*	I1R62M02	*
3" x 1 1/2"	88,9 x 48,3	I1R4031M	*	I1R6031M	*
3" x 2"	88,9 x 60,3	I1R40302	*	I1R60302	*
3" x 2 1/2"	88,9 x 73,0	I1R4032M	*	I1R6032M	*
4" x 2"	114,3 x 60,3	I1R40402	*	I1R60402	*
4" x 2 1/2"	114,3 x 73,0	I1R4042M	*	I1R6042M	*
4" x 3"	114,3 x 88,9	I1R40403	*	I1R60403	*
5" x 3"	141,3 x 88,9	I1R40503	*	I1R60503	*
5" x 4"	141,3 x 114,3	I1R40504	*	I1R60504	*
6" x 3"	168,3 x 88,9	I1R40603	*	I1R60603	*
6" x 4"	168,3 x 114,3	I1R40604	*	I1R60604	*
6" x 5"	168,3 x 141,3	I1R40605	*	I1R60605	*
8" x 6"	219,1 x 168,3	I1R40806	*	I1R60806	*



## BULLONERIA INOSSIDABILE




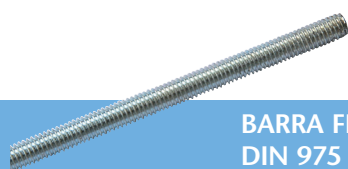
**BULLONI PER FLANGE  
DIN 933 - INOX A2**

MISURA	LUNGHEZZA			COD.	€ 100 UNITÀ
M12	50	300	50	TI331250	114,58
M12	60	300	50	TI331260	131,74
M14	60	200	50	TI331460	199,37
M14	70	150	50	TI331470	229,16
M14	80	150	50	TI331480	240,55
M16	40	200	25	TI331640	194,77
M16	50	150	25	TI331650	229,16
M16	60	150	25	TI331660	252,10
M16	70	150	25	TI331670	286,42
M16	80	100	25	TI331680	309,35
M16	90	100	25	TI331690	343,67
M16	100	100	25	TI331610	378,07
M16	110	100	25	TI331611	412,46
M16	120	75	25	TI331612	435,40
M20	70	75	25	TI332070	481,18
M20	80	75	25	TI332080	526,97
M20	90	50	25	TI332090	572,83
M20	100	50	25	TI332010	630,08
M20	110	50	25	TI332011	675,95
M20	120	50	25	TI332012	721,73
M24	90	40	20	TI332490	985,30
M27	120	20	10	TI332712	1.740,96
M30	130	20	10	TI333013	2.405,52
M33	140	15	5	TI333314	3.070,08




**DADI ESAGONALI  
DIN 934 - INOX A2**

MISURA			COD.	€ 100 UNITÀ
M6	7.200	150	TI934006	5,69
M8	3.750	125	TI934008	11,47
M10	1.600	100	TI934010	25,19
M12	1.200	100	TI934012	36,66
M14	800	50	TI934014	53,82
M16	600	50	TI934016	73,32
M18	400	25	TI934018	109,98
M20	300	25	TI934020	137,51
M24	160	10	TI934024	252,02
M27	100	10	TI934027	492,65
M30	80	10	TI934030	664,48
M33	50	5	TI934033	893,65




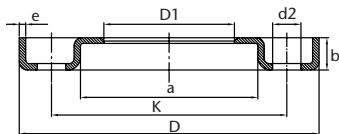
**BARRA FILETTATA 1.000 mm.  
DIN 975 - INOX A2**

MISURA		COD.	€ 100 UNITÀ
M6	50	TI975006	366,60
M8	25	TI975008	641,55
M10	25	TI975010	1.008,15
M12	20	TI975012	1.466,40
M14	15	TI975014	1.993,68
M16	10	TI975016	2.681,64
M18	5	TI975018	3.424,20
M20	5	TI975020	4.307,16



**RONDELLA PIANA  
DIN 125 - INOX A2**

MISURA			COD.	€ 100 UNITÀ
M6	7.200	150	TI125006	2,42
M8	6.000	125	TI125008	4,13
M10	4.800	100	TI125010	8,03
M12	3.000	100	TI125012	17,16
M14	2.100	70	TI125014	24,02
M16	1.680	70	TI125016	25,19
M18	1.200	50	TI125018	29,80
M20	1.200	50	TI125020	36,66
M24	600	50	TI125024	72,15
M27	400	50	TI125027	91,65
M30	300	50	TI125030	119,18
M33	240	30	TI125033	166,14


**FLANGE STAMPATE LIBERE EN 1092-1 TIPO 02 PN 10**


Il montaggio delle 2 flange stampate deve essere effettuato con le adeguate viti e guarnizioni. Mediante l'utilizzo delle adeguate viti e guarnizioni si ottiene una tenuta ottimale.

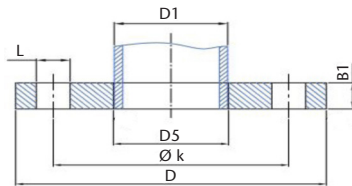
DN	Ø mm.	DIMENSIONI (mm.)								AISI 304L		AISI 316L	
		D1	D	K	a	e	b	d2	N° FORI	COD.	€	COD.	€
15	21,3	24	95	65	38	3	11,5	13,5	4	I4642015	14,96	I6642015	20,69
20	26,9	30	105	75	48	3	14,0	13,5	4	I4642020	17,12	I6642020	23,76
25	33,7	37	115	85	53	3	16,0	13,5	4	I4642025	18,31	I6642025	26,28
32	42,4	46	140	100	68	3	16,5	17,5	4	I4642032	22,85	I6642032	33,68
40	48,3	54	150	110	77	3	17,5	17,5	4	I4642040	26,77	I6642040	42,42
50	60,3	65	165	125	91	3	19,5	17,5	4	I4642050	26,91	I6642050	49,76
50	53,0	58	165	125	91	3	19,5	17,5	4	I4642053	26,21		
65	76,1	81	185	145	108	4	21,0	17,5	4	I4642065	41,37	I6642065	63,46
65	73,0	78	185	145	108	4	21,0	17,5	4	I4642073	41,16		
80	88,9	94	200	160	123	4	22,0	17,5	8	I4642080	49,20	I6642080	79,46
80	84,0	89	200	160	123	4	22,0	17,5	8	I4642084	47,24		
100	114,3	119	220	180	141	4	23,0	17,5	8	I4642100	52,55	I6642100	102,73
100	104,0	110	220	180	141	4	23,0	17,5	8	I4642104	48,85		
125	139,7	145	250	210	168	5	25,0	17,5	8	I4642125	90,85	I6642125	86,45
125	129,0	135	250	210	168	5	25,0	17,5	8	I4642129	85,75		
150	168,3	173	285	240	192	5	27,0	21,5	8	I4642150	108,53	I6642150	131,94
150	154,0	160	285	240	192	5	27,0	21,5	8	I4642154	101,33		
200	219,1	225	340	295	245	6	31,0	21,5	8	I4642200	161,02	I6642200	260,46
200	204,0	212	340	295	245	6	31,0	21,5	8	I4642204	160,39		
250	273,1	279	395	350	295	6	31,0	22,0	12	I4642250	315,04	I6642250	357,67
250	254,0	262	395	350	295	6	31,0	22,0	12	I4642254	293,80		
300	323,9	329	445	400	345	6	34,0	22,0	12	I4642300	359,70	I6642300	413,16

# FLANGE ALLUMINIO



## FLANGE ALLUMINIO SCORREVOLI ISO

DN	Ø	D1	PN	DIMENSIONI (mm)			VITE		B1	COD.	€
				D	K	D5 (ISO)	NR	L			
15	1/2"	21,3	10	95	65	24	4	14	12	FPA10015	4,80
20	3/4"	26,9	10	105	75	30	4	14	12	FPA10020	5,13
25	1"	33,7	10	115	85	36	4	14	12	FPA10025	6,06
32	1 1/4"	42,4	10	140	100	46	4	18	16	FPA10032	8,71
40	1 1/2"	43,0	10	150	110	54	4	18	16	FPA10040	10,25
50	2"	53,0	10	165	125	65	4	18	16	FPA10050	10,97
65	2 1/2"	73,0	10	185	145	81	4	18	16	FPA10065	13,73
80	3"	84,0	10	200	160	94	8	18	18	FPA10080	17,20
100	4"	104,0	10	220	180	119	8	18	18	FPA10100	18,96
125	5"	129,0	10	250	210	145	8	18	18	FPA10125	23,21
150	6"	154,0	10	285	240	173	8	22	18	FPA10150	28,44
200	8"	204,0	10	340	295	225	8	22	20	FPA10200	38,53
250	10"	254,0	10	395	350	279	12	22	22	FPA10250	50,33
300	12"	304,0	10	445	400	329	12	22	22	FPA10300	58,16



## FLANGE ALLUMINIO SCORREVOLI BIANCHE - DIN 2642

DN	Ø	D1	PN	NORMA	DIMENSIONI (mm)			VITE		B1	COD.	€
					D	K	D5 (ISO)	NR	L			
25	1"	33,7	10	ISO	115	85	36	4	M12	12	FPAB0025	*
32	1 1/4"	42,4	10	ISO	140	100	46	4	M16	16	FPAB0032	*
40	1 1/2"	43,0	10	MÉTRICO	150	110	48	4	M16	16	FPABM043	*
40	1 1/2"	48,3	10	ISO	150	110	54	4	M16	16	FPAB0040	*
50	2"	53,0	10	MÉTRICO	165	125	60	4	M16	16	FPABM053	*
50	2"	60,3	10	ISO	165	125	65	4	M16	16	FPAB0050	*
65	2 1/2"	73,0	10	MÉTRICO	185	145	75	4	M16	16	FPABM073	*
65	2 1/2"	76,1	10	ISO	185	145	81	4	M16	16	FPAB0065	*
80	3"	84,0	10	MÉTRICO	200	160	90	8	M16	18	FPABM084	*
80	3"	88,9	10	ISO	200	160	94	8	M16	18	FPAB0080	*
100	4"	104,0	10	MÉTRICO	220	180	111	8	M16	18	FPABM104	*
100	4"	114,3	10	ISO	220	180	119	8	M16	18	FPAB0100	*
125	5"	129,0	10	MÉTRICO	250	210	136	8	M16	18	FPABM129	*
125	5"	139,7	10	ISO	250	210	145	8	M16	18	FPAB0125	*
150	6"	154,0	10	MÉTRICO	285	240	161	8	M20	18	FPABM154	*
150	6"	168,3	10	ISO	285	240	173	8	M20	18	FPAB0150	*
200	8"	204,0	10	MÉTRICO	340	295	212	8	M20	20	FPABM204	*
200	8"	219,1	10	ISO	340	295	225	8	M20	20	FPAB0200	*
250	10"	254,0	10	MÉTRICO	395	350	264	12	M20	22	FPABM254	*
250	10"	273,0	10	ISO	395	350	279	12	M20	22	FPAB0250	*
300	12"	304,0	10	MÉTRICO	445	400	315	12	M20	22	FPABM304	*
300	12"	323,9	10	ISO	445	400	329	12	M20	22	FPAB0300	*

\* A richiesta


**FLANGE INOX FORGIATE**

 FLANGE SECONDO NORME EN 1092-1 01 ED  
 ASME B16,5 ASTM A18L

DIMENSIONI			PIANA (TIPO 01)							
			AISI 304L							
			PN 10		PN 16		PN 25		PN 40	
DN	POLLICI	mm.	COD.	€	COD. EN	€			COD.	€
15	1/2"	21,3	IF414015	22,43	IF414015	22,43	IF414015	22,43	IF414015	22,43
20	3/4"	26,9	IF414020	31,94	IF414020	31,94	IF414020	31,94	IF414020	31,94
25	1"	33,7	IF414025	37,46	IF414025	37,46	IF414025	37,46	IF414025	37,46
32	1 1/4"	42,4	IF414032	55,98	IF414032	55,98	IF414032	55,98	IF414032	55,98
40	1 1/2"	48,3	IF414040	63,88	IF414040	63,88	IF414040	63,88	IF414040	63,88
50	2"	60,3	IF416050	82,12	IF416050	82,12	IF416050	82,12	IF416050	82,12
65	2 1/2"	76,1	I4576065	97,21	I4576065	97,21				
65	2 1/2"	76,1	IF416065	97,21	IF416065	97,21	IF414065	*	IF414065	*
80	3"	88,9	IF416080	107,41	IF416080	107,41	IF414080	*	IF414080	*
100	4"	114,3	IF416100	130,62	IF416100	130,62	IF414100	*	IF414100	*
125	5"	139,7	IF416125	165,14	IF416125	165,14	IF414125	*	IF414125	*
150	6"	168,3	IF416150	211,96	IF416150	211,96	IF414150	*	IF414150	*
200	8"	219,1	IF411200	293,59	IF416200	296,10	IF412200	*	IF414200	*
250	10"	273,0	IF411250	380,25	IF416250	464,46	IF412250	*	IF414250	*
300	12"	323,9	IF411300	382,32	IF416300	638,61	IF412300	*	IF414300	*
350	14"	355,6	IF411350	*	IF416350	*				
400	16"	406,4	IF411400	*	IF416400	*				
450	18"	457,0	IF411450	*	IF416450	*				
500	20"	508,0	IF411500	*	IF416500	*				
600	24"	610,0	IF411600	*	IF416600	*				
700	28"	711,0	IF411700	*	IF416700	*				
800	32"	813,0	IF411800	*						

Flangia non normata
4 FORI

DIMENSIONI			CIECA (TIPO 05)					
			AISI 304L					
			PN 10		PN 16		PN 40	
DN	POLLICI	mm.	COD.	€	COD.	€	COD.	€
15	1/2"	21,3						
	1/2"	21,3	IF454015	29,07	IF454015	29,07	IF454015	29,07
20	3/4"	26,9						
	3/4"	26,9	IF454020	39,76	IF454020	39,76	IF454020	39,76
25	1"	33,7						
	1"	33,7	IF454025	49,69	IF454025	49,69	IF454025	49,69
32	1 1/4"	42,4	IF454032	67,65	IF454032	67,65	IF454032	67,65
40	1 1/2"	48,3	IF454040	77,22	IF454040	77,22	IF454040	77,22
	1 1/2"	48,3						
50	2"	60,3	IF456050	88,82	IF456050	88,82	IF456050	88,82
65	2 1/2"	76,1	IF456065	119,02	IF456065	119,02		
80	3"	88,9	IF456080	138,51	IF456080	138,51		
100	4"	114,3	IF456100	165,42	IF456100	165,42		
125	5"	139,7	IF456125	255,43	IF456125	255,43		
150	6"	168,3	IF456150	319,24	IF456150	319,24		
200	8"	219,1	IF451200	493,60	IF456200	507,93		
250	10"	273,0	IF451250	725,69	IF456250	870,84		
300	12"	323,9	IF451300	*	IF456300	1132,15		
350	14"	355,6	IF451350	*	IF456350	*		
400	16"	406,4	IF451400	*	IF456400	*		
500	20"	508,0	IF451500	*	IF456500	*		

PIANA (TIPO 01)

PIANA (TIPO 01)								
AISI 316L								
PN 10		PN 16		PN 25		PN40		
COD. DIN	€	COD. EN	€	COD.	€	COD.	€	
IF614015	28,16	IF614015	28,16	IF614015	28,16	IF614015	28,16	
IF614020	37,74	IF614020	37,74	IF614020	37,74	IF614020	37,74	
IF614025	44,66	IF614025	44,66	IF614025	44,66	IF614025	44,66	
IF614032	74,01	IF614032	74,01	IF614032	74,01	IF614032	74,01	
IF614040	81,56	IF614040	81,56	IF614040	81,56	IF614040	81,56	
IF616050	105,39	IF616050	105,39	IF616050	105,39	IF616050	105,39	
I6576065	124,82	I6576065	124,82					
IF616065	124,82	IF616065	124,82	IF614065	*	IF614065	*	
IF616080	136,49	IF616080	136,49	IF614080	*	IF614080	*	
IF616100	166,96	IF616100	166,96	IF614100	*	IF614100	*	
IF616125	209,03	IF616125	209,03	IF614125	*	IF614125	*	
IF616150	269,97	IF616150	269,97	IF614150	*	IF614150	*	
IF611200	362,92	IF616200	380,25	IF612200	*	IF614200	*	
IF611250	499,68	IF616250	609,61	IF612250	*	IF614250	*	
IF611300	563,14	IF416300	638,61	IF612300	*	IF614300	*	
IF611350	*	IF416350	*					
IF611400	*	IF416400	*					
IF611450	*	IF416450	*					
IF611500	*	IF416500	*					
IF611600	*	IF416600	*					
IF611700	*	IF416700	*					
IF611800	*							

CIECA (TIPO 05)

CIECA (TIPO 05)						
AISI 316L						
PN 10		PN 16		PN40		
COD.	€	COD.	€	COD.	€	
IF654015	33,61	IF654015	33,61	IF654015	33,61	
IF654020	46,19	IF654020	46,19	IF654020	46,19	
IF654025	53,46	IF654025	53,46	IF654025	53,46	
IF654032	78,41	IF654032	78,41	IF654032	78,41	
IF654040	89,94	IF654040	89,94	IF654040	89,94	
IF656050	110,56	IF656050	110,56	IF656050	110,56	
IF656065	132,08	IF656065	132,08			
IF656080	171,29	IF656080	171,29			
IF656100	206,09	IF656100	206,09			
IF656125	294,36	IF656125	294,36			
IF656150	377,38	IF656150	377,38			
IF651200	603,81	IF656200	603,81			
IF651250	870,85	IF656250	946,46			
IF651300	1.132,15	IF656300	1.335,30			
IF651350	*	IF656350	*			
IF651400	*	IF656400	*			
IF651500	*	IF656500	*			

DIMENSIONI			COLLARINO (TIPO 11)					
			AISI 304L					
			PN 10		PN 16		PN 40	
DN	POLLICI	mm.	COD.	€	COD.	€	COD.	€
15	1/2"	21,3						
	1/2"	21,3	IF424015	26,42	IF424015	26,42	IF424015	26,42
20	3/4"	26,9						
	3/4"	26,9	IF424020	39,21	IF424020	39,21	IF424020	39,21
25	1"	33,7						
	1"	33,7	IF424025	46,61	IF424025	46,61	IF424025	46,61
32	1 1/4"	42,4						
	1 1/4"	42,4	IF424032	68,70	IF424032	68,70	IF424032	68,70
40	1 1/2"	48,3						
	1 1/2"	48,3	IF424040	77,01	IF424040	77,01	IF424040	77,01
50	2"	60,3	IF426050	79,25	IF426050	79,25	IF426050	79,25
65	2 1/2"	76,1	I4633065	95,81	I4633065	95,81		
	2 1/2"	76,1	IF426065	95,81	IF426065	95,81		
80	3"	88,9	IF426080	121,88	IF426080	121,88		
100	4"	114,3	IF426100	149,90	IF426100	149,90		
125	5"	139,7	IF426125	203,16	IF426125	203,16		
150	6"	168,3	IF426150	258,37	IF426150	258,37		
200	8"	219,1			IF426200	374,45		
250	10"	273,0			IF426250	717,03		
300	12"	323,9			IF426300	860,43		
350	14"	355,6			IF426350	*		
400	16"	406,4			IF426400	*		
500	20"	508,0			IF426500	*		

**4 FORI**


DIMENSIONI			PIANA MILIMETRICA (TIPO 01)											
			AISI 304L						AISI 316L					
			PN 10		PN 16		PN 40		PN 10		PN 16		PN 40	
DN	POLLICI	mm.	COD.	€	COD.	€	COD.	€	COD.	€	COD.	€	COD.	€
15	1/2"	18	IM414015	*	IM414015	*	IM414015	*	IM614015	*	IM614015	*	IM614015	*
20	3/4"	23	IM414020	*	IM414020	*	IM414020	*	IM614020	*	IM614020	*	IM614020	*
25	1"	28	IM414025	*	IM414025	*	IM414025	*	IM614025	*	IM614025	*	IM614025	*
32	1 1/4"	38	IM414032	*	IM414032	*			IM614032	*	IM614032	*		
40	1 1/2"	43	IM414040	*	IM414040	*			IM614040	*	IM614040	*		
50	2"	53	IM416050	*	IM416050	*			IM616050	*	IM616050	*		
65	2 1/2"	73	IM416065	*	IM416065	*			IM616065	*	IM616065	*		
80	3"	84	IM416080	*	IM416080	*			IM616080	*	IM616080	*		
100	4"	104	IM416100	*	IM416100	*			IM616100	*	IM616100	*		
125	5"	129	IM416125	*	IM416125	*			IM616125	*	IM616125	*		
150	6"	154	IM416150	*	IM416150	*			IM616150	*	IM616150	*		
200	8"	204	IM411200	*	IM416200	*			IM611200	*	IM616200	*		
250	10"	254	IM411250	*	IM416250	*			IM611250	*	IM616250	*		
300	12"	304	IM411300	*	IM416300	*			IM611300	*	IM616300	*		

**COLLARINO (TIPO 11)**

AISI 316L					
PN 10		PN 16		PN40	
COD.	€	COD.	€	COD.	€
IF624015	35,71	IF624015	35,71	IF624015	35,71
IF624020	49,97	IF624020	49,97	IF624020	49,97
IF624025	55,49	IF624025	55,49	IF624025	55,49
IF624032	78,34	IF624032	78,34	IF624032	78,34
IF624040	89,10	IF624040	89,10	IF624040	89,10
IF626050	107,62	IF626050	107,62	IF626050	107,62
I6633065	124,82	I6633065	124,82		
IF626065	124,82	IF626065	124,82		
IF626080	158,50	IF626080	158,50		
IF626100	188,69	IF626100	188,69		
IF626125	264,17	IF626125	264,17		
IF626150	287,44	IF626150	287,44		
		IF626200	461,52		
		IF626250	747,22		
		IF626300	1.018,93		
		IF626350	*		
		IF626400	*		
		IF626500	*		

DIMENSIONI			PIANA FILETTATA SECONDO DIN 2576							
			AISI 304L				AISI 316L			
			PN 10-16		PN 40		PN 10-16		PN 40	
DN	POLLICI	mm.	COD.	€	COD.	€	COD. DIN	€	COD. EN	€
15	1/2"	21,3	IR416015	*	IR416015	*	IR616015	*	IR616015	*
20	3/4"	26,9	IR416020	*	IR416020	*	IR616020	*	IR616020	*
25	1"	33,7	IR416025	*	IR416025	*	IR616025	*	IR616025	*
32	1 1/4"	42,4	IR416032	*			IR616032	*		
40	1 1/2"	48,3	IR416040	*			IR616040	*		
50	2"	60,3	IR416050	*			IR616050	*		
65	2 1/2"	76,1	IR416065	*			IR616065	*		
80	3"	88,9	IR416080	*			IR616080	*		
100	4"	114,3	IR416100	*			IR616100	*		

DIMENSIONI			SECONDO NORMA ASME B 16.5 ASTM A182 - 150 LBS.					
			AISI 316L					
			WELDING NECK		SLIP ON		BLIND	
DN	POLLICI	mm.	COD.	€	COD.	€	COD.	€
15	1/2"	21,3	IN150015	25,30	IO150015	21,59	IB150015	23,69
20	3/4"	26,9	IN150020	33,68	IO150020	26,49	IB150020	30,33
25	1"	33,7	IN150025	48,08	IO150025	34,87	IB150025	39,56
32	1 1/4"	42,4	IN150032	64,85	IO150032	44,45	IB150032	51,51
40	1 1/2"	48,3	IN150040	82,95	IO150040	54,09	IB150040	63,32
50	2"	60,3	IN150050	108,18	IO150050	82,95	IB150050	95,25
65	2 1/2"	76,1	IN150065	154,59	IO150065	117,37	IB150065	150,67
80	3"	88,9	IN150080	185,06	IO150080	137,67	IB150080	182,33
100	4"	114,3	IN150100	276,54	IO150100	205,39	IB150100	264,38
125	5"	139,7	IN150125	372,49	IO150125	248,23	IB150125	334,40
150	6"	168,3	IN150150	473,89	IO150150	304,77	IB150150	423,09
200	8"	219,1	IN150200	789,99	IO150200	496,54	IB150200	740,37
250	10"	273,0	IN150250	1.173,66	IO150250	733,59	IB150250	1.110,48

\* A richiesta



**ATUSA ITALIA SpA**

Via Giuseppe di Vittorio, 12 - 14

20050 LISCATE (MI) - **ITALIA**

Tel.: +39 02 95351070

[info.italy@atusagroup.com](mailto:info.italy@atusagroup.com)

[www.atusagroup.com](http://www.atusagroup.com)