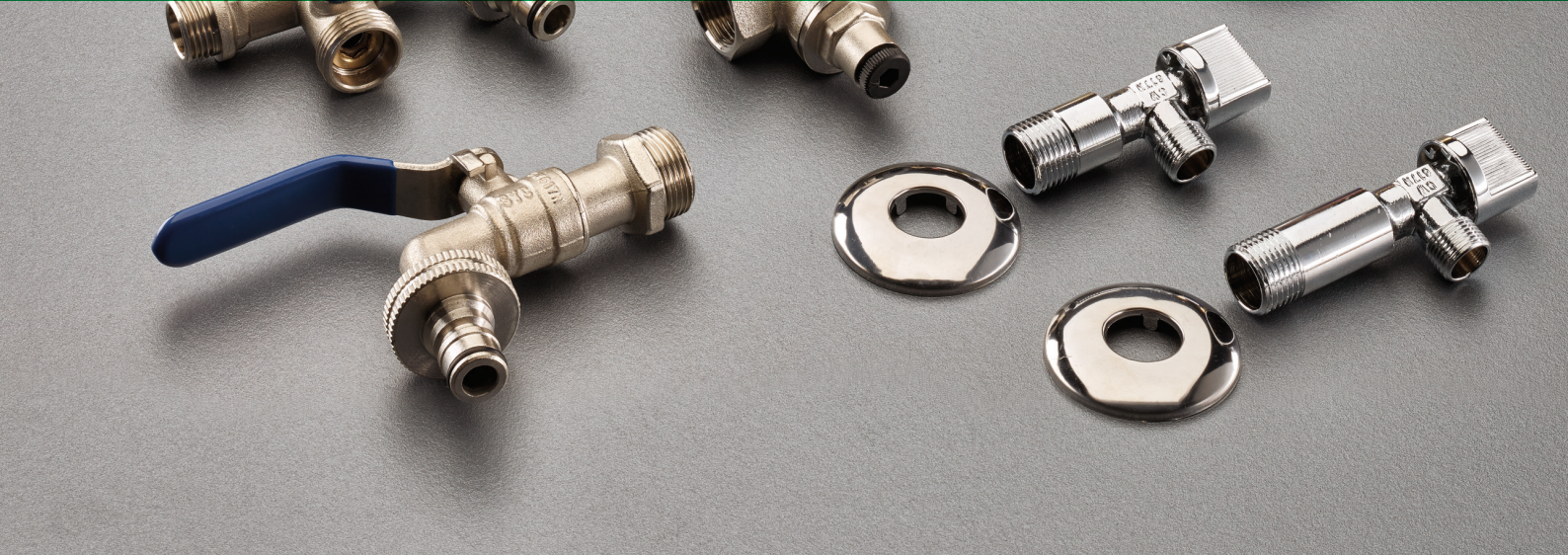
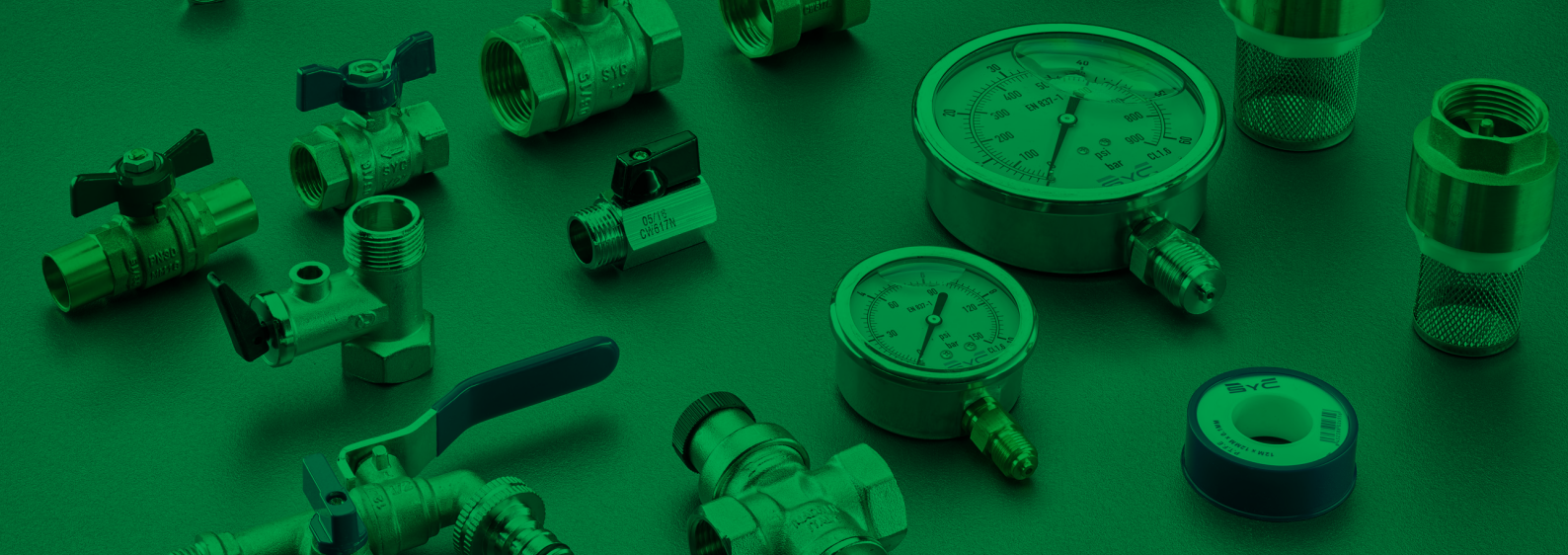


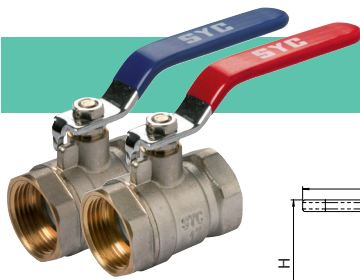
A close-up photograph of a brass valve, showing the handle and the threaded body. The valve is set against a vibrant green background. The ATUSA logo is visible in the top right corner.

ATUSA

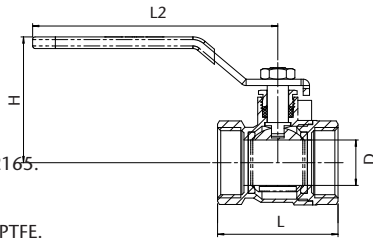
VALVOLE IN
OTTONE

LISTINO 2022

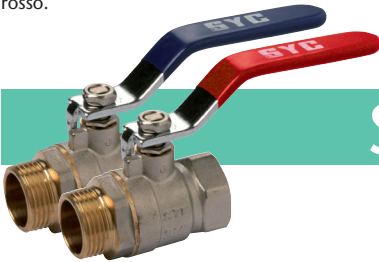


VALVOLE A SFERA

SYC 55/55R VALVOLA A SFERA F/F

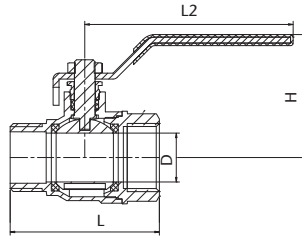
PN 25.
Ottone nichelato secondo EN 12165.
Filettatura Gas, ISO 228/1.
Temperatura massima 120° C.
Premistoppa con guarnizione in PTFE.
Maniglia in acciaio, con PVC azzurro o rosso.



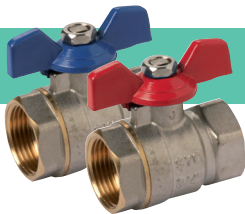
Ø	D mm.	L mm.	L2 mm.	H mm.		COD. AZZURRO	COD. ROSSO	€
1/2"	15	46	90	50	100 10	VS055003	VSR05503	3,25
3/4"	17	51	100	54	80 10	VS055004	VSR05504	4,60
1"	22	58	110	58	64 8	VS055005	VSR05505	7,50
1 1/4"	29	72	140	77	32 8	VS055006	VSR05506	11,40
1 1/2"	35	81	140	82	24 6	VS055007	VSR05507	16,80
2"	44	96	165	86	12 3	VS055008	VSR05508	24,95
2 1/2"	57	124	236	108	4 2	VS05500A	VSR0550A	58,05
3"	68	144	236	116	4 2	VS05500B	VSR0550B	84,70
4"	85	166	236	128	2 1	VS05500C	VSR0550C	142,75


SYC 54/54R VALVOLA A SFERA M/F

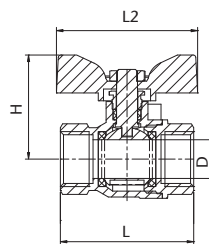
PN 25.
Ottone nichelato secondo EN 12165.
Filettatura Gas, ISO 228/1.
Temperatura massima 120° C.
Premistoppa con guarnizione in PTFE.
Maniglia in acciaio, con PVC azzurro o rosso.



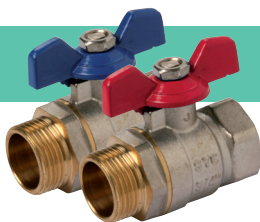
Ø	D mm.	L mm.	L2 mm.	H mm.		COD. AZZURRO	COD. ROSSO	€
1/2"	15	54	85	47	100 10	VS054003	VSR05403	3,85
3/4"	17	61	96	52	80 10	VS054004	VSR05404	5,40
1"	22	67	115	60	64 8	VS054005	VSR05405	8,05
1 1/4"	29	83	132	71	32 8	VS054006	VSR05406	12,85
1 1/2"	35	92	140	79	24 6	VS054007	VSR05407	18,80
2"	44	110	145	87	12 3	VS054008	VSR05408	28,25


SYC 355/355R VALVOLA A SFERA F/F

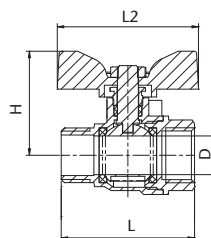
PN 25.
Ottone nichelato secondo EN 12165.
Filettatura Gas, ISO 228/1.
Temperatura massima 120° C.
Premistoppa con guarnizione in PTFE.
Maniglia in acciaio, con PVC azzurro o rosso.



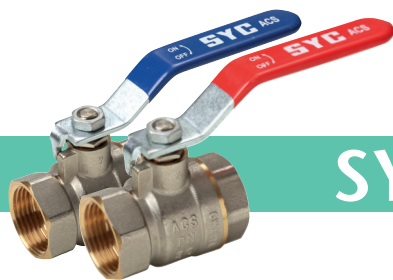
Ø	D mm.	L mm.	L2 mm.	H mm.		COD. AZZURRO	COD. ROSSO	€
1/2"	15	46	56	40	100 10	VS355003	VSR35503	3,45
3/4"	17	51	56	42	80 10	VS355004	VSR35504	4,80
1"	22	58	66	55	64 8	VS355005	VSR35505	7,70


SYC 354/354R VALVOLA A SFERA M/F

PN 25.
Ottone nichelato secondo EN 12165.
Filettatura Gas, ISO 228/1.
Temperatura massima 120° C.
Premistoppa con guarnizione in PTFE.
Maniglia in acciaio, con PVC azzurro o rosso.



Ø	D mm.	L mm.	L2 mm.	H mm.		COD. AZZURRO	COD. ROSSO	€
1/2"	15	54	56	40	100 10	VS354003	VSR35403	3,60
3/4"	17	61	56	42	80 10	VS354004	VSR35404	5,00
1"	22	67	66	55	64 8	VS354005	VSR35405	8,05

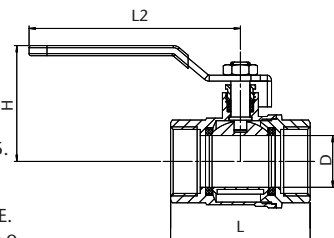


SYC 40/50 VALVOLA A SFERA F/F

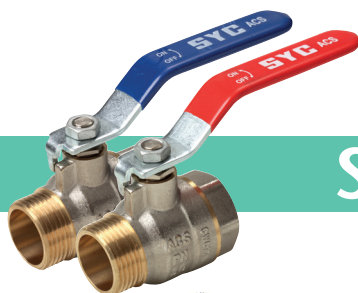
SISTEMA ANTIGELO



PN 30.
Ottone nichelato secondo EN 12165.
Filettatura Gas, ISO 228/1.
Temperatura massima 120° C.
Premistoppa con guarnizione in PTFE.
Maniglia in acciaio, con PVC azzurro o rosso.



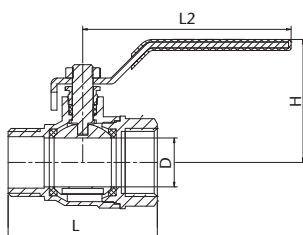
Ø	D mm.	L mm.	L2 mm.	H mm.		COD. AZZURRO	COD. ROSSO	€
1/4"	9,5	40	81	41	150 15	VS040001	VS050001	3,55
3/8"	10	40	81	41	150 15	VS040002	VS050002	3,55
1/2"	15	51	81	44	80 10	VS040003	VS050003	4,70
3/4"	19	58	110	48	48 6	VS040004	VS050004	6,65
1"	24	64	116	61	32 4	VS040005	VS050005	10,25
1 1/4"	30	76	132	67	24 6	VS040006	VS050006	17,20
1 1/2"	37	88	142	88	16 4	VS040007	VS050007	24,45
2"	50	106	142	95	8 2	VS040008	VS050008	39,20
2 1/2"	59	127	235	121	4 1	VS04000A	VS05000A	74,75
3"	74	156	235	132	4 1	VS04000B	VS05000B	116,35
4"	90	179	283	136	3 1	VS04000C	VS05000D	171,10



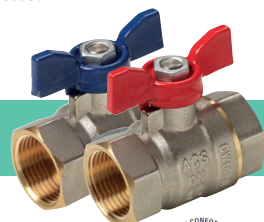
SISTEMA ANTIGELO



PN 30.
Ottone nichelato secondo EN 12165.
Filettatura Gas, ISO 228/1.
Temperatura massima 120° C.
Premistoppa con guarnizione in PTFE.
Maniglia in acciaio, con PVC azzurro o rosso.



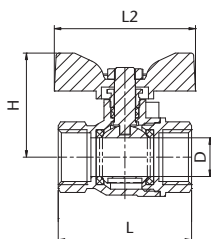
Ø	D mm.	L mm.	L2 mm.	H mm.		COD. AZZURRO	COD. ROSSO	€
3/8"	10	41	81	41	150 15	VS046002	VS056002	3,80
1/2"	15	51	81	44	80 8	VS046003	VS056003	4,75
3/4"	19	58	110	48	48 6	VS046004	VS056004	6,70
1"	24	66	116	61	32 4	VS046005	VS056005	10,80
1 1/4"	30	77	132	67	24 6	VS046006	VS056006	17,75
1 1/2"	37	89	142	85	16 4	VS046007	VS056007	24,80
2"	50	107	142	95	8 2	VS046008	VS056008	40,70



SISTEMA ANTIGELO



PN 30.
Ottone nichelato secondo EN 12165.
Filettatura Gas, ISO 228/1.
Temperatura massima 120° C.
Premistoppa con guarnizione in PTFE.
Maniglia in acciaio, con PVC azzurro o rosso.



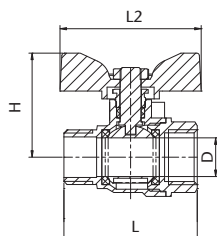
Ø	D mm.	L mm.	L2 mm.	H mm.		COD. AZZURRO	COD. ROSSO	€
3/8"	10	40	54	36	150 15	VS340002	VS350002	3,55
1/2"	15	51	54	40	90 9	VS340003	VS350003	4,70
3/4"	19	58	54	44	80 8	VS340004	VS350004	6,65
1"	24	64	65	51	40 5	VS340005	VS350005	10,25



SISTEMA ANTIGELO



PN 30.
Ottone nichelato secondo EN 12165.
Filettatura Gas, ISO 228/1.
Temperatura massima 120° C.
Premistoppa con guarnizione in PTFE.
Maniglia in acciaio, con PVC azzurro o rosso.



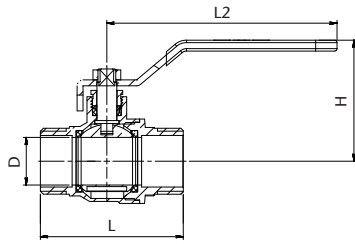
Ø	D mm.	L mm.	L2 mm.	H mm.		COD. AZZURRO	COD. ROSSO	€
3/8"	10	41	54	36	150 15	VS346002	VS356002	3,80
1/2"	15	51	54	40	90 9	VS346003	VS356003	4,75
3/4"	19	58	54	44	80 8	VS346004	VS356004	6,70
1"	24	66	65	51	32 4	VS346005	VS356005	10,80



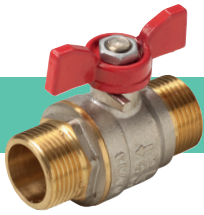
SYC 57

VALVOLA A SFERA M/M
SISTEMA ANTIGELO


PN 30.
Ottone nichelato secondo EN 12165.
Filettatura Gas, ISO 228/1.
Temperatura massima 120° C.
Premistoppa con guarnizione in PTFE.
Maniglia in acciaio, con PVC rosso.



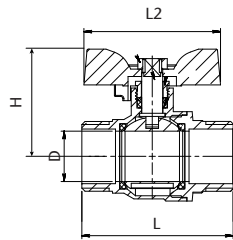
Ø	D mm.	L mm.	L2 mm.	H mm.		COD.	€
1/2"	15	58	81	44	80 8	VS057003	4,75
3/4"	19	64	110	47	48 6	VS057004	7,15
1"	24	72	116	61	32 4	VS057005	11,05
1 1/4"	30	86	132	67	24 6	VS057006	17,75
1 1/2"	37	100	142	85	16 4	VS057007	25,70
2"	50	115	142	95	8 2	VS057008	43,10



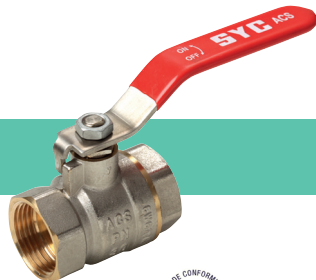
SYC 357

VALVOLA A SFERA M/M
SISTEMA ANTIGELO


PN 30.
Ottone nichelato secondo EN 12165.
Filettatura Gas, ISO 228/1.
Temperatura massima 120° C.
Premistoppa con guarnizione in PTFE.
Maniglia in acciaio, con PVC rosso.



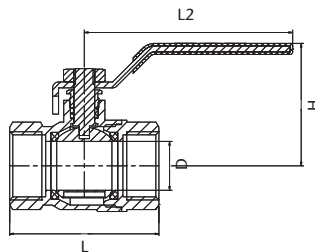
Ø	D mm.	L mm.	L2 mm.	H mm.		COD.	€
1/2"	15	58	54	40	80 8	VS357003	4,75
3/4"	19	64	54	43	70 7	VS357004	7,15
1"	24	72	65	51	32 4	VS357005	11,05



SYC 50/I

VALVOLA A SFERA F/F CON LEVA IN ACCIAIO INOX
SISTEMA ANTIGELO


PN 30.
Ottone nichelato secondo EN 12165.
Filettatura Gas, ISO 228/1.
Temperatura massima 120° C.
Premistoppa con guarnizione in PTFE.
Maniglia in acciaio, con PVC rosso.



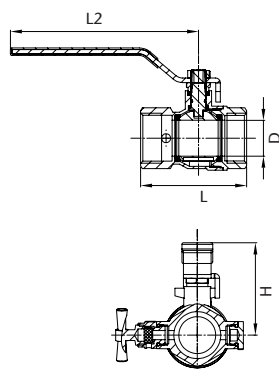
Ø	D mm.	L mm.	L2 mm.	H mm.		COD.	€
1/4"	9,5	40	83	41	150 15	VS50I001	4,40
3/8"	10	40	83	41	150 15	VS50I002	4,40
1/2"	15	51	83	44	80 10	VS50I003	5,60
3/4"	19	58	83	48	48 6	VS50I004	7,40
1"	24	64	120	61	32 4	VS50I005	12,30
1 1/4"	30	76	130	67	24 6	VS50I006	20,15
1 1/2"	37	88	145	88	16 4	VS50I007	27,45
2"	50	106	145	95	8 2	VS50I008	47,15



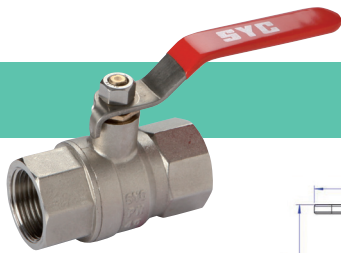
SYC 65

VALVOLA A SFERA F/F CON SPURGO E TAPPO


PN 30.
Ottone nichelato secondo EN 12165.
Filettatura Gas, ISO 228/1.
Temperatura massima 120° C.
Premistoppa con guarnizione in PTFE.
Maniglia in acciaio, con PVC rosso.



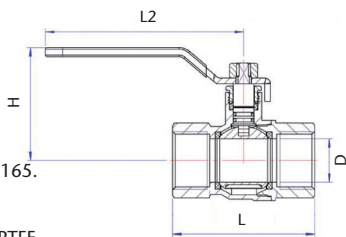
Ø	D mm.	L mm.	L2 mm.	H mm.		COD.	€
1/2"	15	56	97	49	40 4	VS065003	7,95
3/4"	20	63	97	52	24 6	VS065004	11,30
1"	24	71	125	59	24 6	VS065005	13,90
1 1/4"	30	82	140	74	16 4	VS065006	21,40
1 1/2"	37	94	140	80	6 2	VS065007	29,20
2"	45	103	165	89	6 2	VS065008	43,55




SYC 10

VALVOLA A SFERA F/F CON LEVA
IN ACCIAIO INOX

PN 40.
Ottone nichelato secondo EN 12165.
Filettatura Gas, ISO 228/1.
Temperatura massima 120° C.
Premistoppa con guarnizione in PTFE.
Maniglia in acciaio, con PVC rosso.



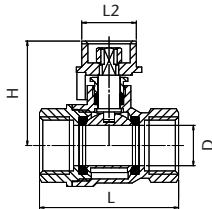
Ø	D mm.	L mm.	L2 mm.	H mm.			COD.	€
1/4"	10	45	81	42	150	15	VS010001	5,25
3/8"	10	45	81	42	150	15	VS010002	5,25
1/2"	15	60	85	50	56	7	VS010003	6,85
3/4"	20	70	85	54	48	6	VS010004	9,65
1"	25	82	114	65	24	6	VS010005	16,75
1 1/4"	32	99	142	77	16	4	VS010006	26,65
1 1/2"	40	106	142	83	8	2	VS010007	34,00
2"	50	126	150	94	8	2	VS010008	58,40




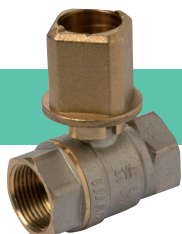
SYC 58

VALVOLA A SFERA F/F PER PIOMBATURA

PN 25.
Ottone nichelato secondo EN 12165.
Filettatura Gas, ISO 228/1.
Temperatura massima 120° C.
Premistoppa con guarnizione in PTFE.



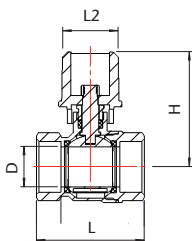
Ø	D mm.	L mm.	L2 mm.	H mm.			COD.	€
1/2"	15	51	20	38	90	9	VS058003	5,75
3/4"	19	58	20	42	80	8	VS058004	7,75
1"	24	64	20	52	48	6	VS058005	11,60
1 1/4"	30	76	20	58	32	4	VS058006	19,75
1 1/2"	37	88	24,5	68	16	4	VS058007	28,15
2"	50	106	24,5	77	8	2	VS058008	45,45




SYC 59

VALVOLA A SFERA F/F CON
CAPPELOTTO 28 x 28

PN 25.
Ottone nichelato secondo EN 12165.
Filettatura Gas, ISO 228/1.
Temperatura massima 120° C.
Premistoppa con guarnizione in PTFE.
Cappelotto 28x28.



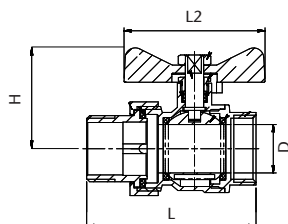
Ø	D mm.	L mm.	L2 mm.	H mm.			COD.	€
1/2"	15	51	28	60	80	10	VS059003	8,75
3/4"	19	58	28	63	48	6	VS059004	10,65
1"	24	64	28	68	36	9	VS059005	14,20
1 1/4"	30	76	28	74	24	6	VS059006	21,65
1 1/2"	37	88	28	80	16	4	VS059007	28,95
2"	50	106	28	89	8	2	VS059008	47,45




SYC 620

VALVOLA A SFERA CON RACCORDO A DUE PEZZI

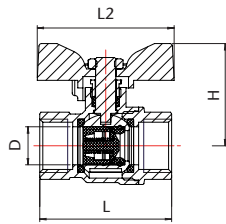
PN 25.
Ottone nichelato secondo EN 12165.
Filettatura Gas, ISO 228/1.
Temperatura massima 120° C.
Premistoppa con guarnizione in PTFE.
Maniglia in acciaio, con PVC rosso.



Ø	D mm.	L mm.	L2 mm.	H mm.			COD.	€
1/2"	15	70	54	36	70	7	VS620003	6,60
3/4"	19	76	54	40	60	6	VS620004	9,60
1"	24	84	70	50	32	4	VS620005	14,95
1 1/4"	30	103	76	59	24	6	VS620006	24,15

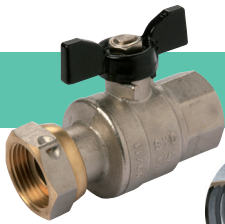


SYC 360

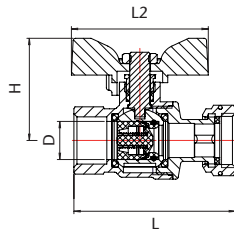
VALVOLA A SFERA F/F CON RITEGNO INCORPORATO

PN 16.

Ottone nichelato secondo EN 12165.
Filettatura Gas, ISO 228/1.
Temperatura massima 120° C.
Premistoppa con guarnizione in PTFE.
Guarnizione ritegno EPDM.
Molla in inox AISI 304.
Maniglia a farfalla in alluminio nero.

Ø	D mm.	L mm.	L2 mm.	H mm.		COD.	€
1/2"	15	52	54	40	90 9	VS360003	6,70
3/4"	20	64	54	44	70 7	VS360004	10,35
1"	25	74	65	51	32 4	VS360005	16,85

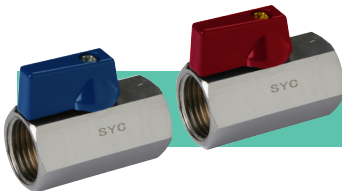


SYC 361

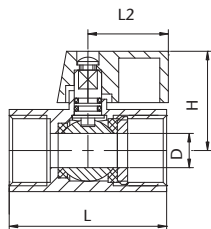
VALVOLA A SFERA F/F CON DADO FOLLE E RITEGNO INCORPORATO

PN 16.

Ottone nichelato secondo EN 12165.
Filettatura Gas, ISO 228/1.
Temperatura massima 120° C.
Premistoppa con guarnizione in PTFE.
Guarnizione ritegno EPDM.
Molla in inox AISI 304.
Maniglia a farfalla in alluminio nero.

Ø	D mm.	L mm.	L2 mm.	H mm.		COD.	€
1/2"	15	64	54	40	100 10	VS361003	7,40
3/4"	20	80	54	44	60 6	VS361004	11,95
1"	25	91	65	51	48 6	VS361005	18,60

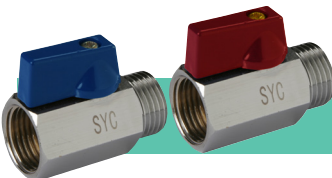


SYC 1011/1011R

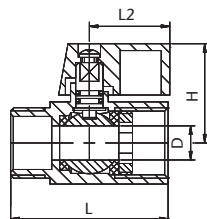
VALVOLA A SFERA TIPO "MINI" F/F

PN 16.

Ottone nichelato secondo EN 12165.
Filettatura Gas, ISO 228/1.
Temperatura massima 100° C.
Molla in inox AISI 304.
Maniglia a farfalla in alluminio azzurro o rosso.

Ø	D mm.	L mm.	L2 mm.	H mm.		COD. AZZURRO	COD. ROSSO	€
1/8"	7	40	23	27	200 20	VS101100	VSR10110	2,95
1/4"	8	40	23	27	200 20	VS101101	VSR10111	2,95
3/8"	8	40	23	27	200 20	VS101102	VSR10112	2,95
1/2"	10	47	23	29	160 16	VS101103	VSR10113	3,55
3/4"	15	50	23	31	100 10	VS101104	VSR10114	6,00



SYC 1012/1012R

VALVOLA A SFERA TIPO "MINI" M/F

PN 16.

Ottone nichelato secondo EN 12165.
Filettatura Gas, ISO 228/1.
Temperatura massima 100° C.
Molla in inox AISI 304.
Maniglia a farfalla in alluminio azzurro o rosso.

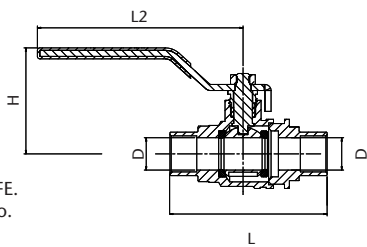
Ø	D mm.	L mm.	L2 mm.	H mm.		COD. AZZURRO	COD. ROSSO	€
1/8"	7	40	23	27	200 20	VS101200	VSR10120	2,95
1/4"	8	40	23	27	200 20	VS101201	VSR10121	2,95
3/8"	8	40	23	27	200 20	VS101202	VSR10122	2,95
1/2"	10	47	23	29	160 16	VS101203	VSR10123	3,55
3/4"	15	50	23	31	100 10	VS101204	VSR10124	6,00




SYC 30/S

VALVOLA A SFERA A SALDARE

PN 30.
Ottone secondo EN 12165.
Estremi a saldare.
Temperatura massima 120° C.
Premistoppa con guarnizione in PTFE.
Maniglia in acciaio, con PVC azzurro.



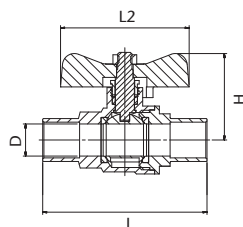
Ø	D mm.	L mm.	L2 mm.	H mm.			COD.	€
15 mm.	13,5	69	85	44	64	8	VS30S315	4,75
18 mm.	13,5	72	85	44	64	8	VS30S418	4,95
22 mm.	18	81	85	46	48	6	VS30S422	7,00
28 mm.	21	95	115	55	32	4	VS30S528	11,60
35 mm.	30	113	140	76	16	4	VS30S635	20,95
42 mm.	37	130	140	81	8	2	VS30S742	31,30
54 mm.	47	151	165	91	4	1	VS30S854	51,15




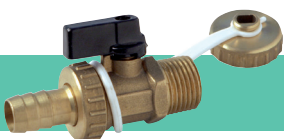
SYC 330/S

VALVOLA A SFERA A SALDARE

PN 30.
Ottone secondo EN 12165.
Estremi a saldare.
Temperatura massima 120° C.
Premistoppa con guarnizione in PTFE.
Maniglia a farfalla in alluminio rosso.



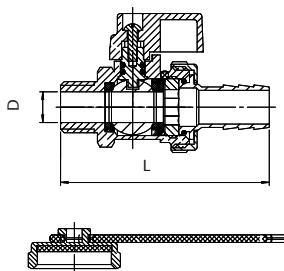
Ø	D mm.	L mm.	L2 mm.	H mm.			COD.	€
15 mm.	13,5	69	54	36	64	8	VS33S315	4,75
18 mm.	13,5	72	54	36	64	8	VS33S418	4,95
22 mm.	18	81	54	39	48	6	VS33S422	7,00




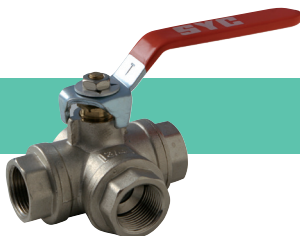
SYC 519

VALVOLA A SFERA PER SCARICO CALDAIA

PN 16.
Ottone secondo EN 12165.
Filettatura Gas, ISO 228/1.
Temperatura massima 100° C.
Guarnizione in PTFE e Oring in NBR
Cordino in plastica con tappo di sicurezza.
Maniglia a farfalla in alluminio nero.



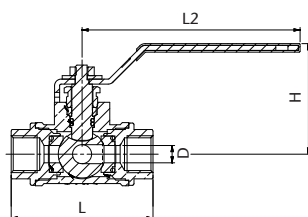
Ø	D mm.	L mm.			COD.	€
1/2"	10	70	64	8	VS519003	5,00




SYC 1302/1303

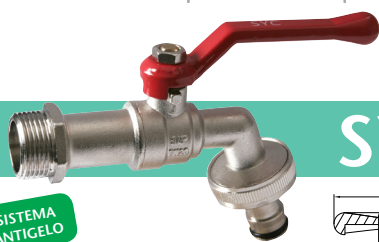
VALVOLA A SFERA A 3 VIE 1302
TIPO L / 1303 TIPO T

PN 16.
Ottone nichelato secondo EN 12165.
Filettatura Gas, ISO 228/1.
Temperatura massima 120° C.
Premistoppa con guarnizione in PTFE.
Sfera a 2 o 3 vie con forma a "L" o "T".
Maniglia in acciaio, con PVC rosso.



Ø	D mm.	L mm.	L2 mm.	H mm.			COD.	€
1/4"	10	81	125	64	24	6	VS130(2)(3)01	23,20
3/8"	10	81	125	64	24	6	VS130(2)(3)02	23,20
1/2"	10	82	125	64	24	6	VS130(2)(3)03	23,20
3/4"	15	91	125	67	15	5	VS130(2)(3)04	31,85
1"	20	105	161	72	12	4	VS130(2)(3)05	51,85
1 1/4"	25	116	161	79	9	3	VS130(2)(3)06	69,60
1 1/2"	32	140	220	92	4	1	VS130(2)(3)07	124,65
2"	40	164	220	98	2	1	VS130(2)(3)08	191,60

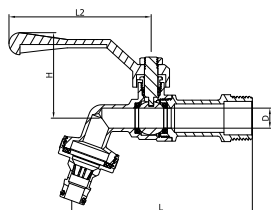
*(2): SYC 1302 Passo L
*(3): SYC 1303 Passo T



SYC 41

RUBINETTO CURVO A SFERA CON LEVA IN ALLUMINIO E ATTACCO RAPIDO PER TUBO IN GOMMA
SISTEMA ANTIGELO

PN 20.
Ottone nichelato secondo EN 12165.
Temperatura massima 100° C.
Premistoppa con guarnizione in PTFE.
Maniglia in alluminio rosso.
Attacco rapido per tubo in gomma



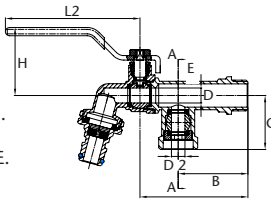
Ø	D mm.	L mm.	L2 mm.	H mm.		COD.	€
1/2" x 3/4"	10	98	86	50	64 8	VS041003	6,00
3/4" x 1"	12	112	86	51	48 6	VS041004	8,70
1" x 1"	15	120	100	54	32 4	VS041005	12,25



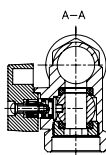
SYC 42

RUBINETTO A SFERA A DUE VIE CON ATTACCO RAPIDO PER TUBO IN GOMMA
SISTEMA ANTIGELO

PN 16.
Ottone nichelato secondo EN 12165.
Temperatura massima 90° C.
Premistoppa con guarnizione in PTFE.
Maniglia Acciaio con PVC azzurro.
Attacco rapido per tubo in gomma



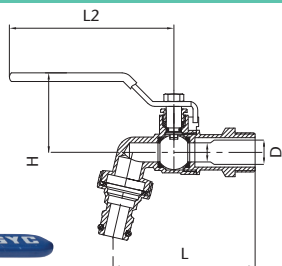
Ø	D mm.	D2 mm.	B mm.	E mm.	C mm.	L2 mm.	H mm.		COD.	€
1/2" x 3/4" x 3/4"	10	9	47	72	37	92	45	36 9	VS042344	9,90



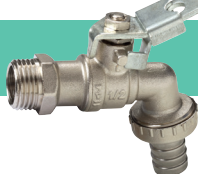
SYC 43

RUBINETTO A SFERA CON LEVA IN ACCIAIO INOX E ATTACCO RAPIDO PER TUBO IN GOMMA
SISTEMA ANTIGELO

PN 16.
Ottone nichelato secondo EN 12165.
Temperatura massima 90° C.
Premistoppa con guarnizione in PTFE.
Maniglia Acciaio INOX con PVC azzurro.
Attacco rapido per tubo in gomma



Ø	D mm.	L mm.	L2 mm.	H mm.		COD.	€
1/2" x 3/4"	10	74	90	45	80 10	VS043003	6,05
3/4" x 1"	12	91	100	47	48 6	VS043004	8,45
1" x 1 1/4"	15	94	110	53	32 4	VS043005	10,45

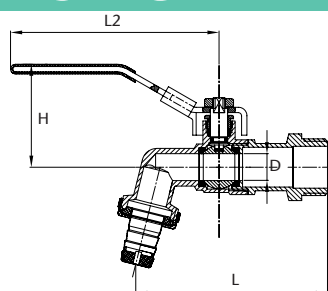


SYC 44

RUBINETTO A SFERA LUCCHETTABILE
SISTEMA ANTIGELO

PN 16.
Ottone nichelato secondo EN 12165.
Temperatura massima 90° C.
Premistoppa con guarnizione in PTFE.
Maniglia Acciaio con PVC azzurro.
Doppio attacco per tubo in gomma.
Rompighiaccio in Nylon.

Pag. 194



Ø	D mm.	L mm.	L2 mm.	H mm.		COD.	€
1/2" x 1/2"	10	73	97	45	80 10	VS044033	4,60
1/2" x 3/4"	10	74	97	45	80 10	VS044003	4,55
3/4" x 3/4"	12	91	97	45	48 6	VS044044	6,50
3/4" x 1"	12	91	97	47	48 6	VS044004	6,70
1" x 1 1/4"	15	94	114	58	32 4	VS044005	8,65

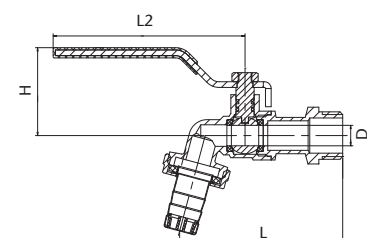


SYC 45

RUBINETTO A SFERA
SISTEMA ANTIGELO

PN 16.
Ottone nichelato secondo EN 12165.
Temperatura massima 90° C.
Maniglia Acciaio con PVC azzurro.
Doppio attacco per tubo in gomma.
Rompighiaccio in Nylon.

Pag. 194



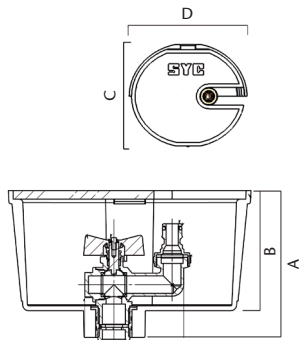
Ø	D mm.	L mm.	L2 mm.	H mm.		COD.	€
1/2" x 3/4"	9	71	81	38	80 10	VS045003	3,65
3/4" x 1"	12	87	85	42	48 6	VS045004	5,80
1" x 1 1/4"	14	94	105	47	32 4	VS045005	8,05



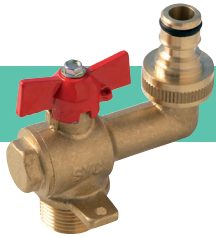
SYC 800

POZZETTO DI IRRIGAZIONE PER GIARDINO

Pozzetto con coperchio verde.
Raccordo attacco rapido tubo
Attacco verticale con valvola a sfera
Temperatura massima 100° C.
Premistoppa con guarnizione in PTFE.
Maniglia a farfalla in alluminio colore rosso.



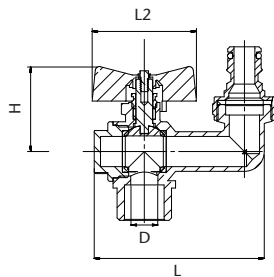
Ø	A mm.	B mm.	C mm.	D mm.		COD.	€
1/2" / 3/4" x 3/4"	123	100	178	200	2 1	VS800044	30,30
1/2" / 3/4" x 1"						VS800045	33,00



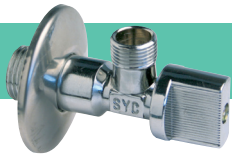
SYC 88

VALVOLA A SFERA CON ATTACCO VERTICALE

PN 16.
Ottone secondo EN 12165.
Attacco rapido per tubo in gomma
Valvola a sfera con attacco verticale
Temperatura massima 100° C.
Premistoppa con guarnizione in PTFE.
Maniglia a farfalla in alluminio colore rosso.



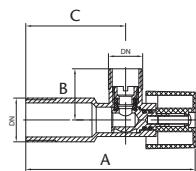
Ø	D mm.	L mm.	L2 mm.	H mm.		COD.	€
3/4" x 3/4"	13	82	50	41	48 6	VS088044	15,00
3/4" x 1"	13	84	50	43	48 6	VS088045	17,45



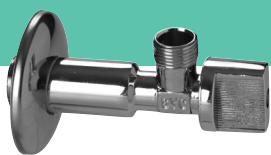
SYC 60

RUBINETTO ANGOLARE

PN 10.
Ottone cromato secondo EN 12165.
Temperatura massima 90° C.
Con vite di serraggio a manopola
Rosetta in acciaio inox.



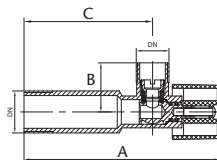
Ø	A mm.	B mm.	C mm.		COD.	€
1/2" x 3/8"	80	24	47	160 2	VS060002	2,40
1/2" x 1/2"	80	24	47	160 2	VS060003	2,50



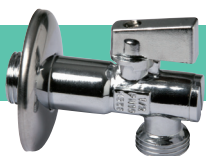
SYC 60L

RUBINETTO ANGOLARE LUNGO

PN 10.
Ottone cromato secondo EN 12165.
Temperatura massima 90° C.
Con vite di serraggio a manopola
Rosetta in acciaio inox.



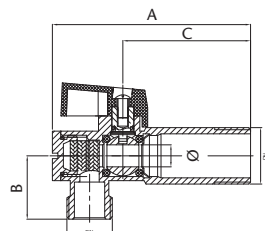
Ø	A mm.	B mm.	C mm.		COD.	€
1/2" x 3/8"	98	24	63	136 2	VS060L02	3,15



SYC 66

RUBINETTO ANGOLARE CON FILTRO

PN 10.
Ottone cromato secondo EN 12165.
Temperatura massima 90° C.
Con vite di serraggio a manopola
Rosetta in acciaio inox.



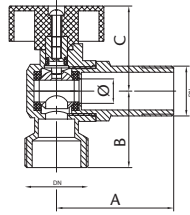
Ø	Ø mm.	A mm.	B mm.	C mm.		COD.	€
1/2" x 3/8"	8	72	23	47	138 2	VS066002	3,40
1/2" x 1/2"	8	72	23	47	138 2	VS066003	3,50
1/2" x 3/4"	8	72	23	47	138 2	VS066004	3,60



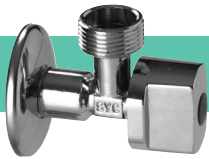
SYC 1100

RUBINETTO ANGOLARE PER LAVATRICE

PN 10.
Ottone cromato secondo EN 12165.
Temperatura massima 90° C.
Con vite di serraggio a manopola
Rosetta in acciaio inox.



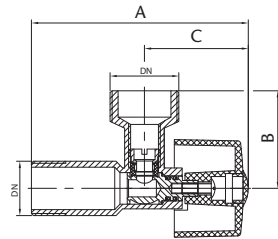
Ø	Ø mm.	A mm.	B mm.	C mm.		COD.	€
1/2" x 3/4"	9	40	32	35	95 1	VS110034	4,00



SYC 1110

RUBINETTO ANGOLARE PER LAVATRICE

PN 10.
Ottone cromato secondo EN 12165.
Temperatura massima 90° C.
Con vite di serraggio a manopola
Rosetta in acciaio inox.



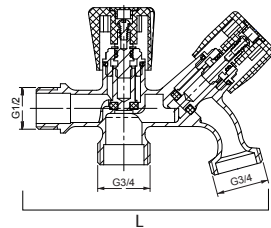
Ø	A mm.	B mm.	C mm.		COD.	€
1/2" x 3/4"	82	37	39	90 1	VS111034	3,50



SYC 1200

RUBINETTO DOPPIO PER LAVATRICE

PN 10.
Ottone cromato secondo EN 12165.
Manopola in ABS cromato.



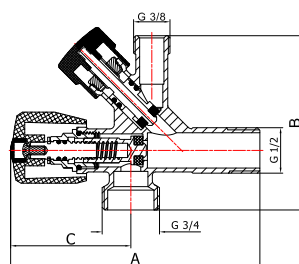
Ø	L mm.		COD.	€
1/2" x 3/4" x 3/4"	115	48 6	VS120003	12,00



SYC 1300

RUBINETTO MISTO LAVATRICE - LAVABO

PN 10.
Ottone cromato secondo EN 12165.
Temperatura massima 100° C.
Con vite di serraggio a manopola
Rosetta in acciaio inox.



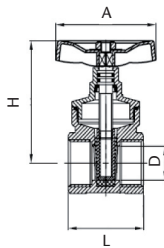
Ø	A mm.	B mm.	C mm.		COD.	€
1/2" x 3/4" x 3/8"	113	79	55	36 1	VS130342	9,20

VALVOLE A SARACINESCA E SEDE INCLINATA



SYC 150/G VALVOLA A SARACINESCA CUNEO GOMMATO

PN 16.
Ottone secondo EN 12165.
Filettatura Gas, ISO 228/1.
Temperatura massima 80° C.
Saracinesca in Ottone + NBR vulcanizzato.
Volantino rosso in acciaio



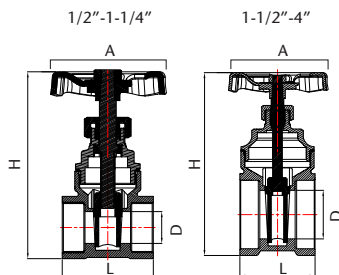
Ø	D mm.	L mm.	H mm.	A mm.		COD.	€
1/2"	13	39	58	50	96 12	VS150G03	6,40
3/4"	19	45	69	50	64 8	VS150G04	8,65
1"	25	51	80	59	48 6	VS150G05	13,90
1 1/4"	29	56	94	59	28 7	VS150G06	23,55
1 1/2"	36	61	128	78	12 3	VS150G07	32,30
2"	45	64	142	78	12 3	VS150G08	45,45
2 1/2"	60	100	170	100	3 1	VS150G0A	93,50
3"	70	100	195	100	3 1	VS150G0B	129,65
4"	99	107	260	130	2 1	VS150G0C	231,70



SYC 150 VALVOLA A SARACINESCA IN OTTONE



PN 16.
Ottone secondo EN 12165.
Filettatura Gas, ISO 228/1.
Temperatura massima 80° C.
Saracinesca in Ottone.
Volantino rosso in acciaio

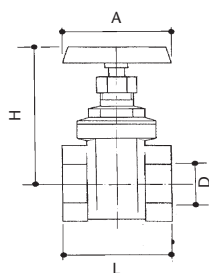


Ø	D mm.	L mm.	H mm.	A mm.		COD.	€
3/8"	13	38	78	50	96 12	VS150002	5,35
1/2"	13	38	78	50	48 12	VS150003	4,85
3/4"	15	41	82	50	48 12	VS150004	5,65
1"	20	45	96	59	32 8	VS150005	7,90
1 1/4"	26	51	115	59	24 4	VS150006	12,55
1 1/2"	33	51	124	70	12 3	VS150007	15,80
2"	42	61	156	70	8 2	VS150008	27,80
2 1/2"	60	66	202	98	10 1	VS15000A	47,50
3"	70	84	236	109	8 1	VS15000B	66,90
4"	93	85	296	131	4 1	VS15000C	119,70

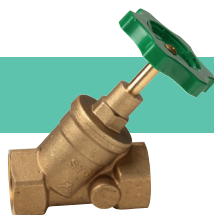


SYC 172 VALVOLA A SARACINESCA IN BRONZO

PN 16.
Corpo en bronze.
Filettatura Gas, ISO 228/1.
Temperatura massima 80° C.
Volantino rosso in acciaio

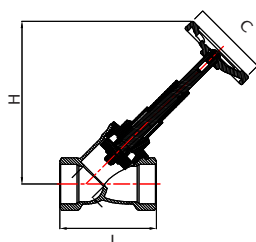


Ø	D mm.	L mm.	H mm.	A mm.		COD.	€
1/2"	15	38	68	45	160 20	VS172003	9,80
3/4"	19	45	78	50	100 20	VS172004	13,25
1"	24	48	92	55	80 10	VS172005	16,65
1 1/4"	32	51	108	60	40 10	VS172006	25,85
1 1/2"	37	58	125	70	35 5	VS172007	33,30
2"	47	62	145	80	25 5	VS172008	45,10
2 1/2"	60	76	175	100	14 1	VS17200A	83,40
3"	72	80	200	100	12 1	VS17200B	103,80
4"	93	96	240	120	6 1	VS17200D	174,45



SYC 173 VALVOLA A SEDE INCLINATA

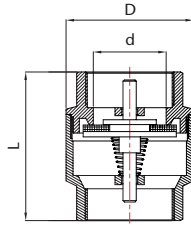
PN 16.
Ottone secondo EN 12165.
Filettatura Gas, ISO 228/1.
Temperatura massima 80° C.
Saracinesca gommata in NBR.



Ø	L mm.	C mm.	H mm.		COD.	€
1/2"	57	50	88	60 6	VS173003	7,15
3/4"	63	50	108	50 5	VS173004	10,05
1"	76	62	130	24 3	VS173005	16,30
1 1/4"	95	62	157	16 4	VS173006	31,10
1 1/2"	113	80	169	8 2	VS173007	49,55
2"	134	80	205	8 1	VS173008	83,10

VALVOLE DI RITEGNO, DI FONDO E FILTRI


SYC 130

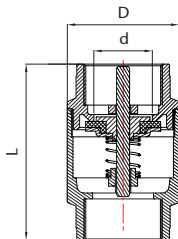
VALVOLA DI RITEGNO A MOLLA


PN 16-10-8.
 Ottone secondo EN 12165.
 Filettatura Gas, ISO 228/1.
 Temperatura massima 80° C.
 Guida e disco in ottone.
 Serraggio in NBR.
 Montaggio in orizzontale o verticale.

Ø	d mm.	L mm.	D mm.		COD.	€
3/8"	14	42	31	144 24	VS130002	3,80
1/2"	15	45	34	120 20	VS130003	4,00
3/4"	23	48	42	72 12	VS130004	5,80
1"	28	56	48	48 8	VS130005	7,70
1 1/4"	37	61	59	24 6	VS130006	11,10
1 1/2"	42	68	67	16 4	VS130007	16,30
2"	54	77	81	8 2	VS130008	26,05
2 1/2"	68	93	104	8 1	VS13000A	55,45
3"	78	97	111	6 1	VS13000B	65,20
4"	100	110	140	2 1	VS13000C	107,80



SYC 131

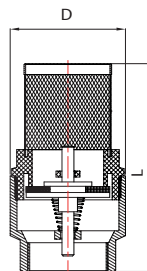
VALVOLA DI RITEGNO A MOLLA RINFORZATA


PN 25-16-10.
 Ottone secondo EN 12165.
 Filettatura Gas, ISO 228/1.
 Temperatura massima 80° C.
 Guida e disco in ottone.
 Serraggio in NBR.
 Installabile in orizzontale o verticale.

Ø	d mm.	L mm.	D mm.		COD.	€
1/2"	16	57	35	90 15	VS131003	5,50
3/4"	22	64	42	48 12	VS131004	7,65
1"	25	75	48	36 9	VS131005	11,70
1 1/4"	32	83	61	24 6	VS131006	18,60
1 1/2"	41	93	71	8 2	VS131007	25,20
2"	50	100	87	8 2	VS131008	36,30
2 1/2"	67	120	119	6 1	VS13100A	77,85
3"	79	140	140	4 1	VS13100B	118,45
4"	100	158	154	3 1	VS13100C	177,40



SYC 130/A

VALVOLA DI RITEGNO PER FONDO


PN 16-10-8.
 Ottone secondo EN 12165.
 Filettatura Gas, ISO 228/1.
 Temperatura massima 80° C.
 Guida e disco in ottone.
 Serraggio in NBR.
 Filtro in Acciaio inox.

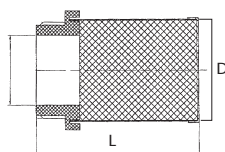
Ø	L mm.	D mm.		COD.	€
1/2"	66	34	72 12	VS130A03	3,45
3/4"	71	43	48 12	VS130A04	4,80
1"	87	48	40 10	VS130A05	6,40
1 1/4"	97	59	12 3	VS130A06	9,15
1 1/2"	111	68	12 3	VS130A07	13,85
2"	129	81	6 3	VS130A08	23,15
2 1/2"	160	103	9 1	VS130A0A	39,10
3"	170	111	8 1	VS130A0B	56,30
4"	194	140	5 1	VS130A0C	81,00



SYC 611

FILTRO INOSSIDABILE PER VALVOLA DI FONDO

Reticolo in inox
 Giunzione in nylon



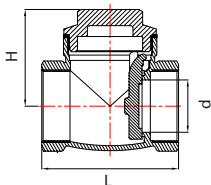
Ø	L mm.	D mm.		COD.	€
1/2"	43	15	250 25	VS611003	0,50
3/4"	44	19	140 14	VS611004	0,55
1"	52	24	88 11	VS611005	0,75
1 1/4"	60	35	48 6	VS611006	1,05
1 1/2"	70	40	40 5	VS611007	1,30
2"	80	50	24 6	VS611008	1,85
2 1/2"	95	63	24 1	VS61100A	2,65
3"	102	78	8 1	VS61100B	3,25
4"	111	98	6 1	VS61100C	4,80



SYC 155

VALVOLA DI RITEGNO A CLAPET A CHIUSURA METALLITA

PN 16-10-8.
Ottone secondo EN 12165.
Filettatura Gas, ISO 228/1.
Temperatura massima 100° C.
Chiusura con disco in ottone.
Installabile in orizzontale o verticale ascendente.



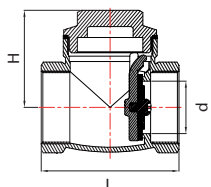
Ø	d mm.	L mm.	H mm.	📦		COD.	€
1/2"	14	48	35	72	12	VS155003	4,90
3/4"	20	52	40	60	10	VS155004	6,90
1"	24	63	45	24	6	VS155005	9,90
1 1/4"	30	74	52	20	5	VS155006	15,75
1 1/2"	32	80	54	16	4	VS155007	20,30
2"	48	98	67	8	1	VS155008	34,55
2 1/2"	61	120	81	5	1	VS15500A	53,80
3"	70	135	92	7	1	VS15500B	81,45
4"	86	160	103	4	1	VS15500C	141,45



SYC 155/A

VALVOLA DI RITEGNO A CLAPET CHIUSURA IN GOMMA

PN 16-10-8.
Ottone secondo EN 12165.
Filettatura Gas, ISO 228/1.
Temperatura massima 80° C.
Chiusura con disco in NBR.
Installabile in orizzontale o verticale ascendente.



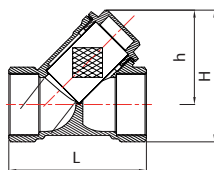
Ø	d mm.	L mm.	H mm.	📦		COD.	€
1/2"	14	48	35	72	12	VS155A03	4,90
3/4"	20	52	40	60	10	VS155A04	6,90
1"	24	63	45	24	6	VS155A05	9,90
1 1/4"	30	74	52	20	5	VS155A06	15,75
1 1/2"	32	80	54	16	4	VS155A07	20,30
2"	48	98	67	8	1	VS155A08	34,55
2 1/2"	61	120	81	5	1	VS155A0A	53,80
3"	70	135	92	7	1	VS155A0B	81,45
4"	86	160	103	4	1	VS155A0C	141,45



SYC 205

FILTRO Y IN OTTONE

PN 16.
Ottone secondo EN 12165.
Filettatura Gas, ISO 228/1.
Temperatura massima 120° C.
Maglia in Acciaio inox.



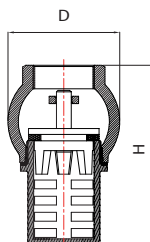
Ø	L mm.	H mm.	h mm.	📦		COD.	€
3/8"	46	41	31	144	12	VS205002	3,70
1/2"	57	53	40	72	12	VS205003	3,95
3/4"	66	62	46	40	10	VS205004	5,95
1"	74	72	52	36	9	VS205005	8,45
1 1/4"	96	88	63	16	4	VS205006	17,00
1 1/2"	104	101	72	12	2	VS205007	20,50
2"	125	122	91	8	1	VS205008	35,10
2 1/2"	146	148	107	4	1	VS20500A	75,20
3"	170	171	123	6	1	VS20500B	88,05
4"	210	214	152	2	1	VS20500C	176,00



SYC 196

VALVOLA DI FONDO CON FILTRO IN OTTONE

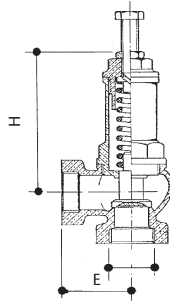
PN 16.
Ottone secondo EN 12165.
Filettatura Gas, ISO 228/1.
Temperatura massima 80° C.
Chiusura con disco in ottone.



Ø	D mm.	H mm.	📦		COD.	€
1/2"	38	62	60	15	VS196003	5,00
3/4"	44	68	48	12	VS196004	6,25
1"	48	76	36	6	VS196005	7,50
1 1/4"	57	94	20	5	VS196006	12,15
1 1/2"	66	102	12	3	VS196007	16,10
2"	77	116	8	2	VS196008	25,60
2 1/2"	86	140	8	1	VS19600A	36,05
3"	111	149	8	1	VS19600B	53,95
4"	143	186	5	1	VS19600C	103,40

VALVOLE DI SICUREZZA


SYC 560

VALVOLA DI SICUREZZA ANGOLARE


PN 16.
Ottone secondo EN 12165.
Temp. massima 200° C.
Sede metallica
Tarabile da 1 a 12 bar.
Fornita senza taratura.

Ø	H mm.	E mm.		COD.	€
1/2"	76	36	50 1	VSS60003	28,65
3/4"	90	39	40 1	VSS60004	38,70
1"	98	47	25 1	VSS60005	52,55
1 1/4"	125	56	15 1	VSS60006	89,30
1 1/2"	140	63	10 1	VSS60007	120,30
2"	150	75	5 1	VSS60008	165,75
2 1/2"	181	86	2 1	VSS6000A	398,15
3"	205	88	2 1	VSS6000B	520,70



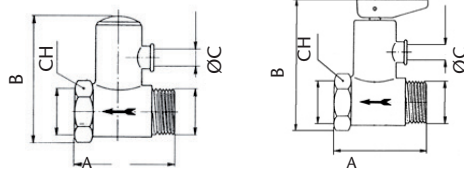
SYC 701

VALVOLA DI SICUREZZA TERMO M/F ORIENTABILE


SENSA LEVA
CON LEVA

Ø	TARADA bar	A mm.	B mm.	C mm.		COD.	€
1/2"	8,5	40	49	6	250 25	VS701R03	4,15
1/2"	8,5	40	59	6	180 20	VS701RP3	4,85

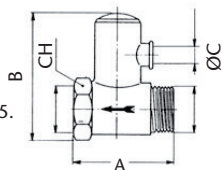
PN 16.
Ottone nichelato secondo EN 12165.
Filettatura GAS ISO 228/1.
Temp. massima 120° C.
Include valvola antiritorno
Scarico orientabile



SYC 702

VALVOLA DI SICUREZZA TERMO M/F


PN 16.
Ottone nichelato secondo EN 12165.
Filettatura GAS ISO 228/1.
Temp. massima 120° C.
Include valvola antiritorno



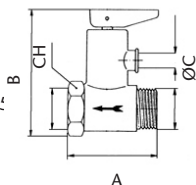
Ø	TARADA bar	A mm.	B mm.	CH mm.	C mm.		COD.	€
1/2"	8,5	40	49	25	6	250 25	VS702003	3,40
3/4"	8,5	53	62	30	8	90 10	VS702004	7,30



SYC 703

VALVOLA DI SICUREZZA TERMO CON LEVA M/F

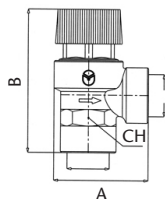

PN 16.
Ottone nichelato secondo EN 12165.
Filettatura GAS ISO 228/1.
Temp. massima 120° C.
Include valvola antiritorno.



Ø	TARADA bar	A mm.	B mm.	CH mm.	C mm.		COD.	€
1/2"	8,5	40	59	25	6	180 20	VS703003	4,35
3/4"	8,5	53	71	30	8	90 10	VS703004	8,25



PN 10.
Ottone secondo EN 12165.
Filettatura Gas, ISO 228/1.
Temp. massima 120° C.
Otturatore e membrana in EPDM.



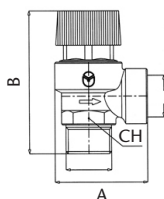
SYC 705

VALVOLA DI SICUREZZA A MEMBRANA F/F

Ø	TARADA bar	A mm.	B mm.	CH mm.		COD.	€
1/2"	3	42	66	25	108 12	VS705033	6,05
1/2"	7	42	66	25	108 12	VS705073	6,05



PN 10.
Ottone secondo EN 12165.
Filettatura Gas, ISO 228/1.
Temp. massima 120° C.
Otturatore e membrana in EPDM.



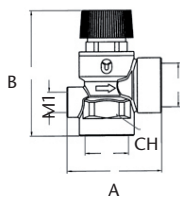
SYC 706

VALVOLA DI SICUREZZA A MEMBRANA M/F

Ø	TARADA bar	A mm.	B mm.	CH mm.		COD.	€
1/2"	3	42	66	25	108 12	VS706033	6,05
1/2"	7	42	66	25	108 12	VS706073	6,05



PN 10.
Ottone secondo EN 12165.
Filettatura Gas, ISO 228/1.
Temp. massima 120° C.
Otturatore e membrana in EPDM.
Connessione manometro 1/4".



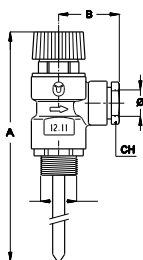
SYC 707

VALVOLA DI SICUREZZA A MEMBRANA M/F
CON CONNESSIONE PER MANOMETRO

Ø	TARADA bar	A mm.	B mm.	CH mm.		COD.	€
1/2"	3	50	74	25	90 10	VS707033	7,80



PN 10.
Ottone secondo EN 12165.
Filettatura Gas, ISO 228/1.
Temp. massima 120° C.
Otturatore e membrana in EPDM. A
La valvola apre a 90° C o a 3 bar.
Capacità di scarico:
Ø 15 - 10 kW,
Ø 22 - 25 kW



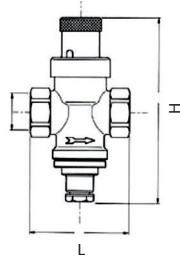
SYC 709

VALVOLA DI SICUREZZA A DOPPIA FUNZIONE
TEMPERATURA-PRESSIONE

Ø	TARADA bar	A mm.	B mm.	CH mm.		COD.	€
1/2" M x Ø15	3	186	35	21	24 1	VS709335	30,40
3/4" M x Ø22	3	192	39	27	24 1	VS709342	46,40

RIDUTTORI DI PRESSIONE


SYC 140

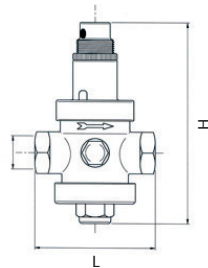
RIDUTTORE DI PRESSIONE A PISTONE PN15


PN 15.
Ottone nichelato secondo EN 12165.
Estremi filettati GAS M/M, ISO 228/1.
Temp. massima 80° C.
Sede in ottone
Regolabile da 1 a 4 bar.
Preparata a 3 bar.

Ø	H mm.	L mm.		COD.	€
1/2"	112	60	50 1	RP140003	14,35
3/4"	113	60	50 1	RP140004	15,05



SYC 143

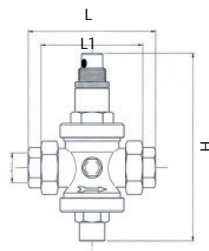
RIDUTTORE DI PRESSIONE A PISTONE PN25


PN 25.
Ottone nichelato secondo EN 12165.
Estremi filettati GAS M/M, ISO 228/1.
Temp. massima 80° CC.
Sede in ottone
Regolabile da 1 a 4 bar.
Preparata a 3 bar.

Ø	H mm.	L mm.		COD.	€
1/2"	120	75	25 1	RP143003	23,45
3/4"	150	85	20 1	RP143004	37,55
1"	160	89	15 1	RP143005	43,85
1 1/4"	220	125	6 1	RP143006	92,15
1 1/2"	220	130	6 1	RP143007	95,35
2"	250	138	4 1	RP143008	152,00
2 1/2"	260	145	4 1	RP14300A	217,00
3"	285	177	3 1	RP14300B	320,80
4"	310	190	2 1	RP14300C	824,85

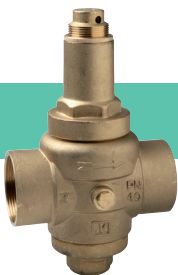


SYC 146

RIDUTTORE DI PRESSIONE A PISTONE CON RACCORDO PN 25


PN 25.
Ottone nichelato secondo EN 12165.
Estremi filettati GAS M/M, ISO 228/1.
Temp. massima 80° CC.
Sede in ottone
Regolabile da 1 a 4 bar.
Preparata a 3 bar.

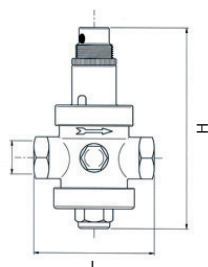
Ø	H mm.	L mm.	L1 mm.		COD.	€
1/2"	120	112	75	20 1	RP146003	29,35
3/4"	160	135	88	10 1	RP146004	51,50
1"	166	140	93	10 1	RP146005	54,90
1 1/4"	220	170	110	6 1	RP146006	101,75
1 1/2"	220	175	110	6 1	RP146007	109,10
2"	250	200	130	3 1	RP146008	177,25



SYC 148

RIDUTTORE DI PRESSIONE A PISTONE PN40

PN 40.
Ottone nichelato secondo EN 12165.
Estremi filettati GAS M/M, ISO 228/1.
Temp. massima 80° CC.
Sede in ottone
Regolabile da 1 a 4 bar.
Preparata a 3 bar.



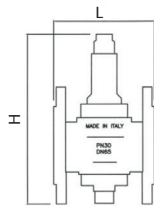
Ø	H mm.	L mm.		COD.	€
1/2"	143	75	25 1	RP148003	43,95
3/4"	174	85	20 1	RP148004	58,50
1"	180	91	15 1	RP148005	73,75
1 1/4"	220	116	6 1	RP148006	135,50
1 1/2"	220	125	6 1	RP148007	181,80
2"	250	140	4 1	RP148008	241,00
2 1/2"	260	145	4 1	RP14800A	277,20




SYC 149

RIDUTTORE DI PRESSIONE A PISTONE
PN30 - FLANGIATO

PN 30.
Flange PN 16.
Corpo in bronzo EN 1982.
Serraggio in acciaio INOX AISI 303.
O-ring in NBR.
Temp. massima 80° C.
Regolazione da 1,5 a 7 bar.
Preimpostato a 3 bar.



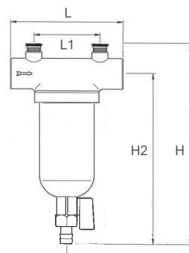
DN	H mm.	L mm.			COD.	€
50	250	165	2	1	RP149050	788,60
65	260	170	2	1	RP149065	915,55
80	285	172	2	1	RP149080	1.061,70
100	340	200	2	1	RP149100	1.235,85




SYC 156

FILTRO AUTOPULENTE CESTELLO 100 MICRON

PN 25.
Ottone secondo EN 12165.
Estremità filettatura GAS, F/F, ISO 228/1.
Temp. massima 130° C.
Attacco manometro in entrata e uscita.
Rubinetto per pulizia da 3/8".
Setaccio in acciaio inox AISI 304 da 100 micron.
Disponibile setaccio da 300 micron.



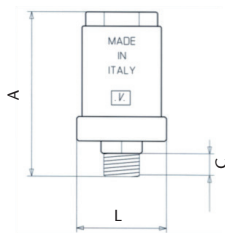
Ø	L mm.	L1 mm.	H mm.	H2 mm.			COD.	€
1/2"	118	70	196	165	17	1	RP156003	60,85
3/4"	118	70	196	165	17	1	RP156004	60,85
1"	123	72	220	180	13	1	RP156005	78,25
1 1/4"	123	72	220	180	13	1	RP156006	78,25
1 1/2"	153	98	258	214	8	1	RP156007	102,05
2"	153	98	258	214	8	1	RP156008	102,05




SYC 145

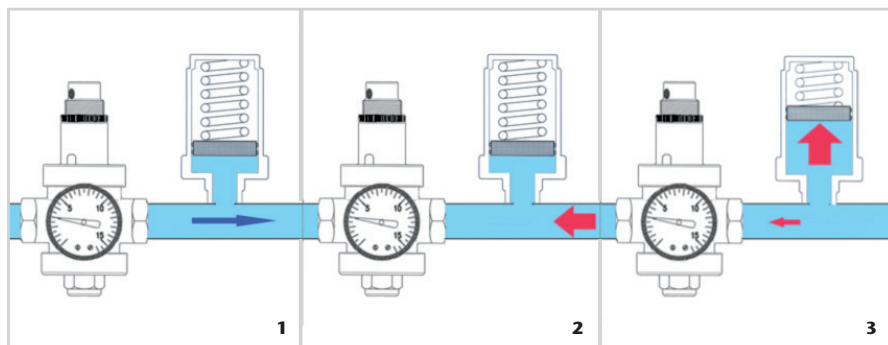
AMMORTIZZATORE ANTI COLPO D'ARIETE

PN 10.
Ottone secondo EN 12165.
Filettatura Gas M, ISO 228/1.
Temp. massima 130° C.
Molla in acciaio inossidabile.
Pressione massima di ritorno 40 bar.



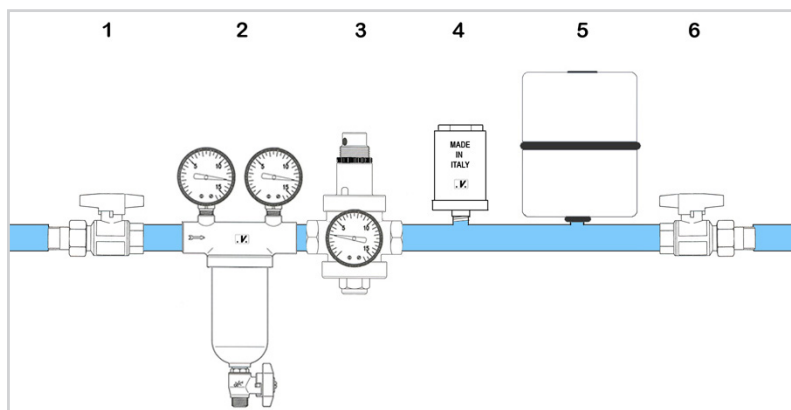
Ø	L mm.	A mm.	C mm.			COD.	€
1/2"	51	93	12	50	1	RP145003	16,35

FUNZIONAMENTO DELL'AMMORTIZZATORE IN CASO DI COLPO D'ARIETE



1. Funzionamento normale
2. Arrivo del colpo d'ariete
3. Assorbimento colpo d'ariete

INSTALLAZIONE CORRETTA



1. Valvola a sfera
2. Filtro autopulente
3. Riduttore di pressione
4. Ammortizzatore anti colpo d'ariete.
5. Vaso di espansione.
6. Valvola a sfera.



SYC 55R-54R
SYC 55-54 LEVA

Ø	COD. ROJO	COD. AZUL	€
1/2"	VSR55M03	VS055M03	0,45
3/4"	VSR55M04	VS055M04	0,55
1"	VSR55M05	VS055M05	0,90
1 1/4"	VSR55M06	VS055M06	1,20
1 1/2"	VSR55M07	VS055M07	1,55
2"	VSR55M08	VS055M08	1,75
2 1/2" - 3"	VSR55MAB	VS055MAB	6,75
4"	VSR55M0C	VS055M0C	6,75



SYC 50-56
SYC 40-46 LEVA

Ø	COD. ROJO	COD. AZUL	€
1/4" - 1/2"	VS050M13	VS040M13	0,45
3/4"	VS050M04	VS040M04	0,55
1"	VS050M05	VS040M05	0,90
1 1/4"	VS050M06	VS040M06	1,55
1 1/2" - 2"	VS050M78	VS040M78	1,65
2 1/2" - 3"	VS050MAB	VS040MAB	6,05
4"	VS050M0D	VS040M0D	7,35



SYC 10 LEVA

Ø	COD.	€
1/2" - 3/4"	VS010M34	1,60
1"	VS010M05	2,90
1 1/4" - 1 1/2"	VS010M67	5,30
2"	VS010M08	6,20



SYC 355R-354R
SYC 355-354 FARFALLA

Ø	COD. ROJO	COD. AZUL	€
1/2"-3/4"	VSR35M34	VS355M34	0,55
1"	VSR35M05	VS355M05	0,90



SYC 350-356
SYC 340-346 FARFALLA

Ø	COD. ROJO	COD. AZUL	€
3/8"-3/4"	VS350M24	VS340M24	0,55
1"	VS350M05	VS340M05	0,90



SYC 30/S LEVA

Ø	COD.	€
1/2" - 3/4"	VS30SM34	0,50
1"	VS30SM05	0,90
1 1/4"-1 1/2"	VS30SM67	1,60
2"	VS30SM08	2,20



SYC 43 LEVA

Ø	COD.	€
1/2"-3/4"	VS043M34	1,45
1"	VS043M05	1,95



SYC 44 LEVA

Ø	COD.	€
1/2" - 3/4"	VS044M34	0,80
1"	VS044M05	1,45



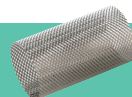
SYC 45 LEVA

Ø	COD.	€
1/2" - 3/4"	VS045M34	0,45
1"	VS045M05	0,80



SYC 173 VOLANTINO

Ø	COD.	€
1/2" - 3/4"	VS173V34	0,80
1" - 1 1/4"	VS173V56	1,25
1 1/2" - 2"	VS173V78	2,35



SYC 205 CESTELLO

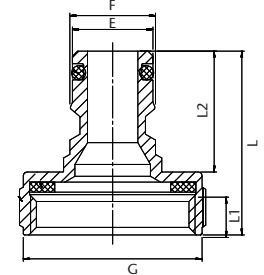
Ø	COD.	€
1/2"	VS205M33	0,50
3/4"	VS205M34	0,55
1"	VS205M35	0,80
1/2"	VS205M03	0,45
3/4"	VS205M04	0,50
1"	VS205M05	0,75
1 1/4"	VS205M06	0,80
1 1/2"	VS205M07	0,95
2"	VS205M08	1,25
2 1/2"	VS205M0A	2,25
3"	VS205M0B	3,25
4"	VS205M0C	4,45

300 µm 500 µm 1200 µm



PORTAGOMMA
ATTACCO RAPIDO

Ø		COD.	€
3/4"	400 40	VS046RR4	1,55
1"	300 30	VS046RR5	2,05



DN	E	F	L	L2	L1	G
3/4"	16	17	35,2	24	7	29
1"	16	17	36,5	24	8	35



SYC 150 VOLANTINO

Ø	COD.	€
1/2" - 3/4"	VS150V34	0,60
1" - 1 1/4"	VS150V56	0,65
1 1/2" - 2"	VS150V78	1,20
2 1/2"	VS150V0A	3,05
3"	VS150V0B	4,45
4"	VS150V0C	5,55



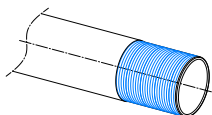
SYC 205
GUARNIZIONE

Ø	COD.	€
1/2"	VS205J03	0,20
3/4"	VS205J04	0,25
1"	VS205J05	0,30

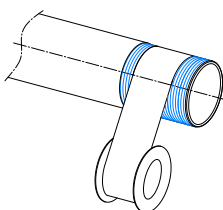
ISTRUZIONI DI MONTAGGIO

Assicurarsi che la valvola si adegui alle condizioni di servizio: natura del fluido, pressione, temperatura.

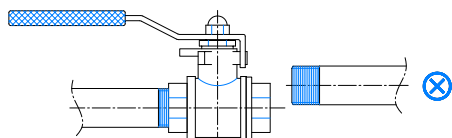
Controllare che la filettatura del tubo sia perfettamente pulita e definita.



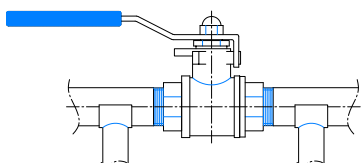
È indispensabile l'utilizzo di un sigillante (teflon o simile) sulla filettatura maschio, per ottenere una tenuta perfetta.



Verificare l'allineamento dei tubi. La valvola non compensa disallineamenti. Distorsioni derivanti da un allineamento errato possono causare problemi di tenuta, difficoltà durante le manovre o perfino rottura.



I tubi che vengono collegati alla valvola devono essere perfettamente fissati.



NOTA: La progettazione dell'impianto deve evitare ogni tipo di sollecitazione per non danneggiare la valvola e mantenerla sempre operativa.

CONSIDERAZIONI IMPORTANTI

Le valvole a sfera devono rimanere completamente aperte o completamente chiuse. Il passaggio da una posizione all'altra deve essere fatto delicatamente per non generare disturbi improvvisi o colpi d'ariete.

Il dispositivo di apertura - chiusura della valvola deve essere azionato ogni due mesi circa, aumentando tale valore spesso in presenza di acqua dura o depositi.

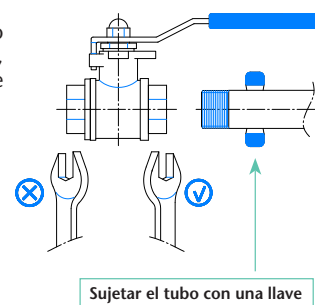
Quando la valvola offre molta resistenza alla sua apertura o chiusura, deve essere manovrata utilizzando un tubo come estensione della leva.

Per installazioni temporaneamente fuori servizio, si consiglia di chiudere i collegamenti e procedere allo svuotamento.

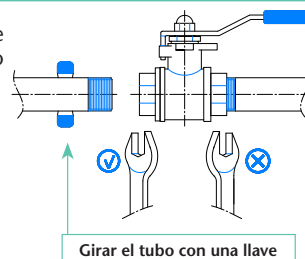
Non stringere mai una valvola in una morsa né utilizzare prolunghe chiave. Potrebbero causare la rottura o la deformazione della valvola.

Quando si uniscono il tubo e la valvola, è necessario posizionare la chiave fissa o la chiave inglese nell'esagono sul lato corretto della valvola, non utilizzare un altro tipo di chiave.

Primo passo: il tubo viene tenuto fermo e si ruota la valvola, posizionando la chiave esagonale sul lato da unire.

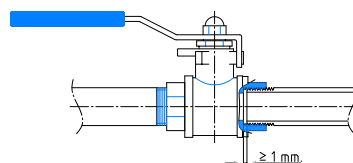


Secondo passo: la valvola viene mantenuta ferma e viene fatto girare il tubo.



In via generale non superare una coppia di serraggio di 30 Nm.

Poiché normalmente la lunghezza della filettatura del tubo è maggiore di quella della valvola, per evitare la rottura della valvola, è fondamentale che l'estremità del tubo non tocchi mai il fondo della filettatura della valvola. Minimo 1 mm.





ATUSA ITALIA SpA

Via Giuseppe di Vittorio, 12 - 14

20050 LISCATE (MI) - **ITALIA**

Tel.: +39 02 95351070

info.italy@atusagroup.com

www.atusagroup.com