



ACCESORIOS
**ACERO
INOXIDABLE**

TARIFA 2023

ACCESORIOS ROSCADOS AISI 316

90 CODO H/H 90°

Ø			COD.	€
1/8"	400	10	I0906000	
1/4"	400	10	I0906001	
3/8"	290	10	I0906002	
1/2"	160	10	I0906003	
3/4"	80	10	I0906004	
1"	50	10	I0906005	
1 1/4"	24	4	I0906006	
1 1/2"	18	2	I0906007	
2"	10	1	I0906008	
2 1/2"	6	1	I0906009	
3"	3	1	I090600A	
4"	1		I090600C	


92 CODO M/H 90°

Ø			COD.	€
1/8"	500	10	I0926000	
1/4"	350	10	I0926001	
3/8"	260	10	I0926002	
1/2"	160	10	I0926003	
3/4"	100	10	I0926004	
1"	50	10	I0926005	
1 1/4"	25	5	I0926006	
1 1/2"	18	2	I0926007	
2"	10	1	I0926008	
2 1/2"	4	1	I0926009	
3"	3	1	I092600A	
4"	1		I092600C	


96 CODO UNIÓN ASIENTO CÓNICO H/H

Ø			COD.	€
1/2"	50	5	I0966003	
3/4"	40	5	I0966004	
1"	20	2	I0966005	
1 1/4"	15	1	I0966006	
1 1/2"	12	1	I0966007	
2"	6	1	I0966008	


98 CODO UNIÓN ASIENTO CÓNICO M/H

Ø			COD.	€
1/2"	50	5	I0986003	
3/4"	30	5	I0986004	
1"	14	2	I0986005	
1 1/4"	12	1	I0986006	
1 1/2"	8	1	I0986007	
2"	6	1	I0986008	


120 CODO H/H 45°

Ø			COD.	€
1/4"	400	10	I1206001	
3/8"	300	10	I1206002	
1/2"	150	5	I1206003	
3/4"	90	5	I1206004	
1"	60	5	I1206005	
1 1/4"	30	1	I1206006	
1 1/2"	20	1	I1206007	
2"	12	1	I1206008	
2 1/2"	8	1	I1206009	
3"	4	1	I120600A	


121 CODO M/H 45°

Ø			COD.	€
1/4"	400	10	I1216001	
3/8"	200	10	I1216002	
1/2"	150	5	I1216003	
3/4"	90	5	I1216004	
1"	60	5	I1216005	
1 1/4"	30	1	I1216006	
1 1/2"	20	1	I1216007	
2"	12	1	I1216008	
2 1/2"	8	1	I1216009	
3"	4	1	I121600A	



130 TE



130R TE REDUCIDA

Ø		COD.	€
1/8"	380 10	I1306000	
1/4"	250 10	I1306001	
3/8"	160 10	I1306002	
1/2"	100 5	I1306003	
3/4"	50 5	I1306004	
1"	30 5	I1306005	
1 1/4"	18 2	I1306006	
1 1/2"	14 2	I1306007	
2"	10 1	I1306008	
2 1/2"	4 1	I1306009	
3"	2 1	I130600A	
4"	1	I130600C	

Ø		COD.	€
1/2" x 3/8" x 1/2"	120 5	I1306323	
3/4" x 1/2" x 3/4"	60 5	I1306434	
1" x 1/2" x 1"	40 5	I1306535	
1" x 3/4" x 1"	30 5	I1306545	
1" x 1" x 1/2"	30 5	I1306553	



180 CRUZ

Ø		COD.	€
1/8"	250 10	I1806000	
1/4"	160 10	I1806001	
3/8"	120 10	I1806002	
1/2"	60 10	I1806003	
3/4"	36 6	I1806004	
1"	20 5	I1806005	
1 1/4"	16 4	I1806006	
1 1/2"	12 4	I1806007	
2"	6 2	I1806008	
2 1/2"	3 1	I1806009	
3"	2 1	I180600A	
4"	1	I180600C	



241 TUERCA REDUCIDA

Ø		COD.	€
1/4" x 1/8"	650 10	I2416010	
3/8" x 1/8"	580 10	I2416020	
3/8" x 1/4"	580 10	I2416021	
1/2" x 1/8"	500 10	I2416030	
1/2" x 1/4"	380 10	I2416031	
1/2" x 3/8"	400 10	I2416032	
3/4" x 1/4"	240 5	I2416041	
3/4" x 3/8"	250 5	I2416042	
3/4" x 1/2"	240 5	I2416043	
1" x 3/8"	120 10	I2416052	
1" x 1/2"	140 5	I2416053	
1" x 3/4"	140 5	I2416054	
1 1/4" x 1/2"	100 5	I2416063	
1 1/4" x 3/4"	80 5	I2416064	
1 1/4" x 1"	100 5	I2416065	
1 1/2" x 1/2"	60 5	I2416073	
1 1/2" x 3/4"	60 5	I2416074	
1 1/2" x 1"	70 2	I2416075	
1 1/2" x 1 1/4"	70 2	I2416076	
2" x 1/2"	35 5	I2416083	
2" x 3/4"	35 5	I2416084	
2" x 1"	30 5	I2416085	
2" x 1 1/4"	30 5	I2416086	
2" x 1 1/2"	30 2	I2416087	
2 1/2" x 1"	24 2	I2416095	
2 1/2" x 1 1/4"	24 4	I2416096	
2 1/2" x 1 1/2"	24 2	I2416097	
2 1/2" x 2"	24 2	I2416098	
3" x 2"	16 1	I24160A8	
3" x 2 1/2"	16 1	I24160A9	
4" x 2"	8 1	I24160C8	
4" x 2 1/2"	8 1	I24160C9	
4" x 3"	8 1	I24160CA	



240 MANGUITO REDUCIDO

Ø		COD.	€
1/4" x 1/8"	300 10	I2406010	
3/8" x 1/4"	300 10	I2406021	
1/2" x 1/4"	150 10	I2406031	
1/2" x 3/8"	200 10	I2406032	
3/4" x 1/4"	140 10	I2406041	
3/4" x 1/2"	120 5	I2406043	
1" x 1/2"	90 5	I2406053	
1" x 3/4"	70 5	I2406054	
1 1/4 x 3/4"	60 5	I2406064	
1 1/4" x 1"	40 5	I2406065	
1 1/2" x 1"	40 5	I2406075	
1 1/2" x 1 1/4"	30 5	I2406076	
2" x 1"	30 5	I2406085	
2" x 1 1/4"	25 5	I2406086	
2" x 1 1/2"	25 5	I2406087	
2 1/2" x 2"	12 2	I2406098	
3" x 2"	12 2	I24060A8	


245 ROSCA DOBLE REDUCIDA

270 MANGUITO

Ø		COD.	€
1/4" x 1/8"	520 10	I2456010	
3/8" x 1/8"	400 10	I2456020	
3/8" x 1/4"	400 10	I2456021	
1/2" x 1/4"	280 10	I2456031	
1/2" x 3/8"	200 10	I2456032	
3/4" x 1/4"	200 10	I2456041	
3/4" x 3/8"	100 10	I2456042	
3/4" x 1/2"	180 10	I2456043	
1" x 1/2"	100 5	I2456053	
1" x 3/4"	100 5	I2456054	
1 1/4" x 1/2"	60 5	I2456063	
1 1/4" x 3/4"	70 5	I2456064	
1 1/4" x 1"	60 5	I2456065	
1 1/2" x 1/2"	45 3	I2456073	
1 1/2" x 3/4"	54 3	I2456074	
1 1/2" x 1"	40 2	I2456075	
1 1/2" x 1 1/4"	36 2	I2456076	
2" x 1"	28 2	I2456085	
2" x 1 1/4"	30 2	I2456086	
2" x 1 1/2"	26 2	I2456087	
2 1/2" x 1"	12 2	I2456095	
2 1/2" x 1 1/4"	12 2	I2456096	
2 1/2" x 1 1/2"	12 2	I2456097	
2 1/2" x 2"	20 1	I2456098	
3" x 2"	10 1	I24560A8	
3" x 2 1/2"	10 1	I24560A9	

Ø		COD.	€
1/8"	800 10	I2706000	
1/4"	450 10	I2706001	
3/8"	400 10	I2706002	
1/2"	240 10	I2706003	
3/4"	180 5	I2706004	
1"	80 5	I2706005	
1 1/4"	50 2	I2706006	
1 1/2"	40 2	I2706007	
2"	24 1	I2706008	
2 1/2"	12 1	I2706009	
3"	8 1	I270600A	
4"	4 1	I270600C	


280 ROSCA DOBLE

Ø		COD.	€
1/8"	700 10	I2806000	
1/4"	500 10	I2806001	
3/8"	400 10	I2806002	
1/2"	240 10	I2806003	
3/4"	120 5	I2806004	
1"	80 5	I2806005	
1 1/4"	45 3	I2806006	
1 1/2"	30 2	I2806007	
2"	20 1	I2806008	
2 1/2"	12 1	I2806009	
3"	8 1	I280600A	
4"	4 1	I280600C	


285 RACOR PASAMUROS

Ø		COD.	€
3/8"	100 5	I2856002	
1/2"	100 5	I2856003	
3/4"	60 5	I2856004	
1"	40 5	I2856005	
1 1/4"	20 2	I2856006	
1 1/2"	16 2	I2856007	
2"	16 2	I2856008	


290 TAPÓN

Ø		COD.	€
1/8"	800 10	I2906000	
1/4"	600 10	I2906001	
3/8"	500 10	I2906002	
1/2"	300 10	I2906003	
3/4"	200 5	I2906004	
1"	140 5	I2906005	
1 1/4"	81 3	I2906006	
1 1/2"	60 3	I2906007	
2"	30 1	I2906008	
2 1/2"	24 1	I2906009	
3"	16 1	I290600A	
4"	8 1	I290600C	


300 TAPA

Ø		COD.	€
1/8"	600 10	I3006000	
1/4"	600 10	I3006001	
3/8"	400 10	I3006002	
1/2"	250 5	I3006003	
3/4"	180 5	I3006004	
1"	120 5	I3006005	
1 1/4"	60 3	I3006006	
1 1/2"	46 2	I3006007	
2"	30 1	I3006008	
2 1/2"	20 1	I3006009	
3"	12 1	I300600A	
4"	8 1	I300600C	



312 CONTRATUERA



315 PORTAGOMA

Ø			COD.	€
1/8"	1000	10	I3106000	
1/4"	800	10	I3106001	
3/8"	600	10	I3106002	
1/2"	400	5	I3106003	
3/4"	300	5	I3106004	
1"	200	5	I3106005	
1 1/4"	120	3	I3106006	
1 1/2"	100	2	I3106007	
2"	10	1	I3106008	
2 1/2"	25	1	I3106009	
3"	20	1	I310600A	
4"	10	1	I310600C	

Ø			COD.	€
1/8" x 8 mm.	500	10	I3156000	
1/4" x 9 mm.	500	10	I3156001	
3/8" x 11 mm.	350	10	I3156002	
1/2" x 15 mm.	200	10	I3156003	
3/4" x 20 mm.	120	5	I3156004	
1" x 27 mm.	60	5	I3156005	
1 1/4" x 33 mm.	40	2	I3156006	
1 1/2" x 40 mm.	35	1	I3156007	
2" x 53 mm.	15	1	I3156008	
2 1/2" x 66 mm.	10	1	I3156009	
3" x 80 mm.	8	1	I315600A	
4" x 105 mm.	2	1	I315600C	



330 UNIÓN ASIENTO PLANO H/H

Ø			COD.	€
1/4"	120	10	I3306001	
3/8"	100	10	I3306002	
1/2"	100	10	I3306003	
3/4"	60	10	I3306004	
1"	40	10	I3306005	
1 1/4"	20	5	I3306006	
1 1/2"	18	3	I3306007	
2"	16	2	I3306008	
2 1/2"	6	2	I3306009	
3"	4	1	I330600A	
4"	2	1	I330600C	



331 UNIÓN ASIENTO PLANO M/H

Ø			COD.	€
1/4"	200	10	I3316001	
3/8"	150	10	I3316002	
1/2"	100	10	I3316003	
3/4"	60	5	I3316004	
1"	42	3	I3316005	
1 1/4"	21	3	I3316006	
1 1/2"	16	2	I3316007	
2"	10	1	I3316008	
2 1/2"	6	1	I3316009	
3"	4	1	I331600A	
4"	2	1	I331600C	



340 UNIÓN ASIENTO CÓNICO H/H

Ø			COD.	€
1/8"	250	10	I3406000	
1/4"	200	10	I3406001	
3/8"	150	10	I3406002	
1/2"	100	10	I3406003	
3/4"	60	5	I3406004	
1"	42	3	I3406005	
1 1/4"	21	3	I3406006	
1 1/2"	16	2	I3406007	
2"	16	1	I3406008	
2 1/2"	6	1	I3406009	
3"	4	1	I340600A	
4"	2	1	I340600C	



341 UNIÓN ASIENTO CÓNICO M/H

Ø			COD.	€
1/8"	250	10	I3416000	
1/4"	200	10	I3416001	
3/8"	120	10	I3416002	
1/2"	100	10	I3416003	
3/4"	50	5	I3416004	
1"	30	3	I3416005	
1 1/4"	21	3	I3416006	
1 1/2"	16	2	I3416007	
2"	10	1	I3416008	
2 1/2"	5	1	I3416009	
3"	2	1	I341600A	
4"	1	1	I341600C	


**JUNTA PTFE PLANA
PARA 330 Y 331**

Ø			COD.	€
1/4"	100	10	I33J0001	
3/8"	100	10	I33J0002	
1/2"	100	10	I33J0003	
3/4"	100	10	I33J0004	
1"	100	10	I33J0005	
1 1/4"	100	10	I33J0006	
1 1/2"	100	10	I33J0007	
2"	100	10	I33J0008	
2 1/2"	100	10	I33J0009	
3"	100	10	I33J000A	
4"	100	10	I33J000C	


531 CASQUILLO INTERIOR

Ø			COD.	€
1/4"	1000	10	I5316001	
3/8"	600	10	I5316002	
1/2"	350	5	I5316003	
3/4"	200	5	I5316004	
1"	140	5	I5316005	
1 1/4"	80	2	I5316006	
1 1/2"	60	2	I5316007	
2"	18	1	I5316008	


530 BOBINA ROSCADA

Ø			COD.	€
1/8" x 40 mm.	800	10	I5306000	
1/4" x 40 mm.	500	10	I5306001	
3/8" x 40 mm.	400	10	I5306002	
3/8" x 80 mm.	280	10	I5362080	
3/8" x 150 mm.	120	10	I5362150	
1/2" x 60 mm.	180	10	I5306003	
1/2" x 80 mm.	210	10	I5363080	
1/2" x 120 mm.	120	10	I5363120	
1/2" x 150 mm.	110	10	I5363150	
3/4" x 60 mm.	120	10	I5306004	
3/4" x 100 mm.	60	10	I5364100	
3/4" x 120 mm.	70	10	I5364120	
3/4" x 150 mm.	60	10	I5364150	
3/4" x 200 mm.	50	10	I5364200	
1" x 40 mm.	140	10	I5365040	
1" x 60 mm.	120	5	I5306005	
1" x 80 mm.	70	10	I5365080	
1" x 100 mm.	60	10	I5365100	
1" x 150 mm.	40	10	I5365150	
1" x 200 mm.	30	10	I5365200	
1 1/4" x 80 mm.	40	2	I5306006	
1 1/4" x 100 mm.	40	10	I5366100	
1 1/4" x 150 mm.	25	1	I5366150	
1 1/2" x 80 mm.	25	1	I5306007	
1 1/2" x 150 mm.	20	1	I5367150	
2" x 60 mm.	30	10	I5368060	
2" x 100 mm.	18	1	I5306008	
2" x 150 mm.	12	1	I5368150	
2 1/2" x 100 mm.	10	1	I5306009	
3" x 120 mm.	5	1	I530600A	
4" x 120 mm.	2	1	I530600C	


**600 BOBINA ROSCADA
A UN LADO**

Ø			COD.	€
1/8" x 30 mm.	1200	10	I6006000	
1/4" x 30 mm.	500	10	I6006001	
3/8" x 30 mm.	500	10	I6006002	
1/2" x 35 mm.	300	5	I6006003	
3/4" x 40 mm.	180	5	I6006004	
1" x 40 mm.	120	5	I6006005	
1 1/4" x 50 mm.	60	3	I6006006	
1 1/2" x 50 mm.	40	2	I6006007	
2" x 50 mm.	30	1	I6006008	
2 1/2" x 60 mm.	18	1	I6006009	
3" x 70 mm.	12	1	I600600A	
4" x 80mm.	4	1	I600600C	


**700 ENTRONQUE
ROSCA - MANGUERA**

Ø			COD.	€
1/4" x 70 mm.	400	10	I7001070	
3/8" x 70 mm.	250	10	I7002070	
1/2" x 70 mm.	180	10	I7003070	
3/4" x 70 mm.	120	10	I7004070	
1" x 70 mm.	90	5	I7005070	
1 1/4" x 70 mm.	40	5	I7006070	
1 1/2" x 100 mm.	25	5	I7007100	
2" x 100 mm.	20	1	I7008100	


**800 ENTRONQUE
MANGUERA - MANGUERA**

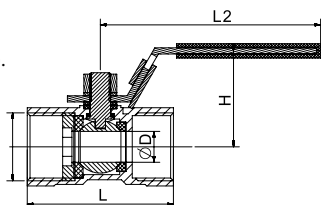
Ø			COD.	€
1/4" x 66 mm.	300	10	I8001066	
3/8" x 76 mm.	250	10	I8002076	
1/2" x 86 mm.	160	10	I8003086	
3/4" x 100 mm.	80	10	I8004100	
1" x 114 mm.	50	5	I8005114	
1 1/4" x 114 mm.	30	5	I8006114	
1 1/2" x 122 mm.	25	5	I8007122	
2" x 130 mm.	15	1	I8008130	

VÁLVULAS INOXIDABLES AISI 316



VÁLVULA DE ESFERA UNA PIEZA

Cuerpo en acero inoxidable CF8M (AISI 316).
Eje en AISI 316.
Maneta en AISI 304 recubierta en PVC azul.
Asiento de la bola PTFE + 15% GF.
Extremos rosca ISO 7/1 (roscas R-Rp).
Temperatura de trabajo: -20° C a 180° C.
Presión de trabajo: 1000 WOG/PN 63.
Sistema de bloqueo.

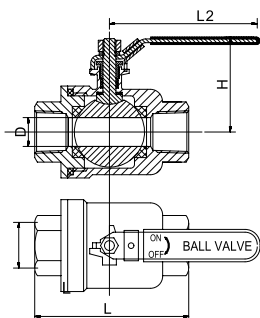


Ø	D mm.	L mm.	L2 mm.	H mm.		COD.	€
1/4"	5,0	40	62,5	30,7	200 1	IVB10061	
3/8"	7,0	44	74,5	34,7	120 1	IVB10062	
1/2"	9,2	56	86,5	40,7	70 1	IVB10063	
3/4"	12,5	59	88,5	43,2	50 1	IVB10064	
1"	15,0	71	107,0	49,2	30 1	IVB10065	
1 1/4"	20,0	78	107,0	52,8	24 1	IVB10066	
1 1/2"	25,0	83	132,0	66,4	16 1	IVB10067	
2"	32,0	95	132,0	72,2	12 1	IVB10068	



VÁLVULA DE ESFERA DOS PIEZAS PASO TOTAL

Cuerpo en acero inoxidable CF8M (AISI 316).
Eje en AISI 316.
Maneta en AISI 304 recubierta en PVC azul.
Asiento de la bola PTFE + 15% GF.
Extremos rosca ISO 7/1 (roscas R-Rp).
Temperatura de trabajo: -20° C a 180° C.
Presión de trabajo: 1000 WOG/PN 63.
Sistema de bloqueo.

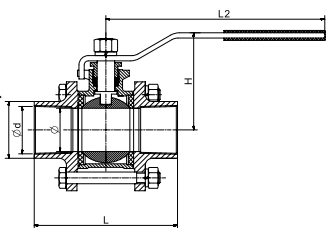


Ø	D mm.	L mm.	L2 mm.	H mm.		COD.	€
1/4"	12,5	49,0	100	47	60 1	IVB20061	
3/8"	12,5	49,0	100	47	60 1	IVB20062	
1/2"	15,0	56,0	102	48	45 1	IVB20063	
3/4"	20,0	64,5	112	59	25 1	IVB20064	
1"	25,0	78,0	120	56	16 1	IVB20065	
1 1/4"	32,0	88,0	135	68	10 1	IVB20066	
1 1/2"	38,0	96,5	148	83	6 1	IVB20067	
2"	50,0	116,5	165	99	4 1	IVB20068	
2 1/2"	65,0	146,5	235	128	4 1	IVB20069	
3"	76,0	168,0	235	135	2 1	IVB2006A	
4"	94,0	214,0	308	172	2 1	IVB2006C	



VÁLVULA DE ESFERA TRES PIEZAS PASO TOTAL - ROSCADA

Cuerpo en acero inoxidable CF8M (AISI 316).
Eje en AISI 316.
Maneta en AISI 304 recubierta en PVC azul.
Asiento de la bola PTFE + 15% GF.
Extremos rosca ISO 7/1 (roscas R-Rp).
Temperatura de trabajo: -20° C a 180° C.
Presión de trabajo: 1000 WOG/PN 63.
Sistema de bloqueo.

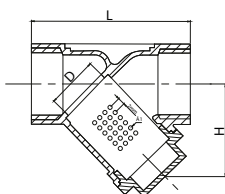


Ø	d mm.	L mm.	L2 mm.	H mm.		COD.	€
1/4"	12,50	51	100	45	40 1	IVB30061	
3/8"	12,50	51	100	45	36 1	IVB30062	
1/2"	15,00	62	100	49	30 1	IVB30063	
3/4"	20,00	69	112	60	16 1	IVB30064	
1"	25,00	79	112	64	11 1	IVB30065	
1 1/4"	32,00	96	145	80	6 1	IVB30066	
1 1/2"	38,00	102	145	83	4 1	IVB30067	
2"	50,00	124	165	97	2 1	IVB30068	
2 1/2"	65,00	159	230	118	2 1	IVB30069	
3"	76,00	179	230	125	1 1	IVB3006A	
4"	94,00	220	300	169	1 1	IVB3006C	



FILTRO EN "Y"

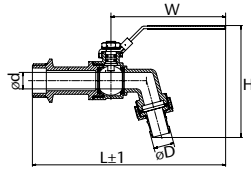
Cuerpo en acero inoxidable CF8M (AISI 316).
Temperatura de trabajo: -20° C a 160° C.
Extremos rosca ISO 7/1 (roscas R-Rp).
Presión de trabajo: PN 50.
Junta en PTFE.



Ø	D mm.	L mm.	H mm.		COD.	€
1/2"	10	63	38	70 1	IVF00063	
3/4"	20	80	55	45 1	IVF00064	
1"	25	90	56	25 1	IVF00065	
1 1/4"	32	108	60	14 1	IVF00066	
1 1/2"	40	120	70	12 1	IVF00067	
2"	50	142	82	6 1	IVF00068	


GRIFO MANGUERA

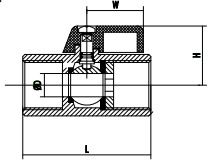
Cuerpo en acero inoxidable CF8M (AISI 316).
Eje en AISI 316.
Maneta en SS 301 recubierta en PVC azul.
Junta conexión en viton.
Extremos rosca BSP.
Temperatura de trabajo: -20° C a 160° C.
Presión de trabajo: PN 16.



Ø	D mm.	L mm.	H mm.	W mm.		COD.	€
1/2"	13,0	145,0	87	92	40 1	IVG06003	
3/4"	16,0	154,0	92	105	30 1	IVG06004	
1"	27,5	183,5	115	105	20 1	IVG06005	


VÁLVULA ESFERA MINI H/H

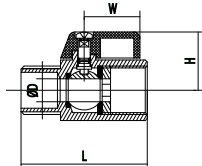
Cuerpo en acero inoxidable CF8M (AISI 316).
Maneta en aluminio.
Bola en acero inoxidable CF8M.
O-ring en viton.
Extremos rosca ISO 7/1 (rosca R-Rp).



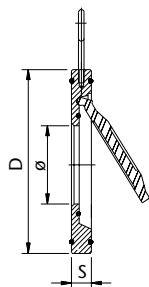
Ø	D mm.	L mm.	H mm.	W mm.		COD.	€
1/4"	7,0	42	25,0	22,8	160 1	IVBHH061	
3/8"	7,0	42	25,0	22,8	160 1	IVBHH062	
1/2"	9,2	47	28,3	22,8	80 1	IVBHH063	


VÁLVULA ESFERA MINI M/H

Cuerpo en acero inoxidable CF8M (AISI 316).
Maneta en aluminio.
Bola en acero inoxidable CF8M.
O-ring en viton.
Extremos rosca ISO 7/1 (rosca R-Rp).



Ø	D mm.	L mm.	H mm.	W mm.		COD.	€
1/4"	7,0	42	25,0	22,8	160 1	IVBMH061	
3/8"	7,0	42	25,0	22,8	160 1	IVBMH062	
1/2"	9,2	47	28,3	22,8	80 1	IVBMH063	


VÁLVULA DE RETENCIÓN CON CLAPETA - SERIE LIGERA


DN	S mm.	D mm.	Ø mm.	PESO Kg.	COD.	€
40	14	94	22	0,8	VF540040	
50	14	107	32	1,0	VF540050	
65	14	127	40	1,5	VF540065	
80	14	142	54	2,0	VF540080	
100	18	162	70	2,5	VF540100	
125	18	192	92	3,5	VF540125	
150	20	218	114	4,5	VF540150	
200	22	273	154	7,5	VF540200	
250	26	329	200	12,0	VF540250	
300	28	384	235	17,5	VF540300	

CARACTERÍSTICAS TÉCNICAS

Presión de trabajo: PN 16.
Temperatura de trabajo: -10° C a 150° C.
Para bridas DIN EN 1092 PN 16.

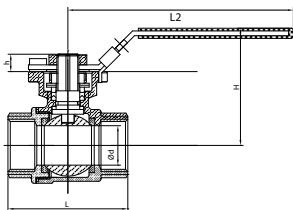
COMPONENTES

Cuerpo: Acero Inoxidable AISI 316
Disco: Acero Inoxidable AISI 316
Asiento Cuerpo: Viton
Asiento Disco: Viton
Sujeción: Acero Inoxidable AISI 316



VÁLVULA DE ESFERA DOS PIEZAS PASO TOTAL CON PLACA - ROSCADA

Cuerpo en acero inoxidable CF8M (AISI 316).
Eje en AISI 316.
Maneta en AISI 304 recubierta en PVC azul.
Asiento de la bola PTFE + 15% GF.
Extremos rosca ISO 7/1 (rosca R-Rp).
Temperatura de trabajo: -10° C a 150° C.
Presión de trabajo: 1000 WOG/PN 63.
Sistema de bloqueo.
Montador actuador directo según ISO 5211

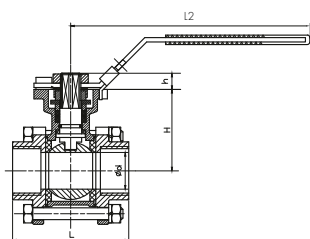


Ø	d mm.	L mm.	L2 mm.	H mm.	h mm.		COD.	€
1/4"	9,0	48,0	120,5	37,0	9	60 1	IVB2P061	
3/8"	12,5	48,0	120,5	39,0	9	60 1	IVB2P062	
1/2"	15,0	56,0	120,5	39,0	9	45 1	IVB2P063	
3/4"	20,0	64,0	120,5	41,5	9	25 1	IVB2P064	
1"	25,0	76,0	140,0	47,0	11	16 1	IVB2P065	
1 1/4"	32,0	86,5	140,0	52,0	11	10 1	IVB2P066	
1 1/2"	38,0	97,5	170,0	62,0	14	6 1	IVB2P067	
2"	50,0	117,5	170,0	71,0	14	4 1	IVB2P068	



VÁLVULA DE ESFERA TRES PIEZAS PASO TOTAL CON PLACA - ROSCADA

Cuerpo en acero inoxidable CF8M (AISI 316).
Eje en AISI 316.
Maneta en AISI 304 recubierta en PVC azul.
Asiento de la bola PTFE + 15% GF.
Extremos rosca ISO 7/1 (rosca R-Rp).
Temperatura de trabajo: -20° C a 180° C.
Presión de trabajo:
1000 WOG/PN 63 de 1/2" a 1 1/2".
600 WOG/PN 40 de 2" a 4".
Sistema de bloqueo.
Montaje actuador directo según ISO 5211.

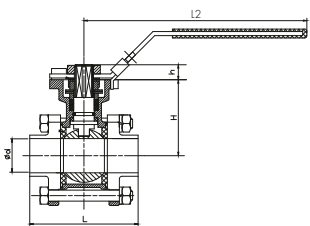


Ø	d mm.	L mm.	L2 mm.	H mm.	h mm.		COD.	€
1/2"	15	61	120,5	39,0	9	30 1	IVB3P063	
3/4"	20	69	120,5	41,5	9	16 1	IVB3P064	
1"	25	79	140,0	47,0	11	11 1	IVB3P065	
1 1/4"	32	96	140,0	52,0	11	6 1	IVB3P066	
1 1/2"	38	102	170,0	62,0	14	4 1	IVB3P067	
2"	50	124	170,0	71,0	14	2 1	IVB3P068	
2 1/2"	65	158	230,0	89,0	18	2 1	IVB3P069	
3"	76	179	230,0	98,0	18	1 1	IVB3P06A	
4"	94	220	300,0	129,0	22	1 1	IVB3P06C	



VÁLVULA DE ESFERA TRES PIEZAS PASO TOTAL CON PLACA - BUTT WELD

Cuerpo en acero inoxidable CF8M (AISI 316).
Eje en AISI 316.
Maneta en AISI 304 recubierta en PVC azul.
Asiento de la bola PTFE + 15% GF.
Temperatura de trabajo: -20° C a 180° C.
Presión de trabajo:
1000 WOG/PN 63 de 1/2" a 1 1/2".
600 WOG/PN 40 de 2" a 4".
Sistema de bloqueo.
Montaje actuador directo según ISO 5211.
Extremos para soldar Butt Weld ANSI B 16.25.

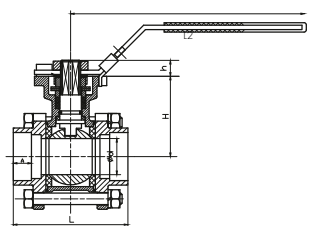


Ø	d mm.	L mm.	L2 mm.	H mm.	h mm.		COD.	€
1/2"	15	61	120,5	39,0	9	30 1	IVB3PB63	
3/4"	20	69	120,5	41,5	9	16 1	IVB3PB64	
1"	25	79	140,0	47,0	11	11 1	IVB3PB65	
1 1/4"	32	96	140,0	52,0	11	6 1	IVB3PB66	
1 1/2"	38	102	170,0	62,0	14	4 1	IVB3PB67	
2"	50	124	170,0	71,0	14	2 1	IVB3PB68	
2 1/2"	65	158	230,0	89,0	18	2 1	IVB3PB69	
3"	76	179	230,0	98,0	18	1 1	IVB3PB6A	
4"	94	220	300,0	129,0	22	1 1	IVB3PB6C	



VÁLVULA DE ESFERA TRES PIEZAS PASO TOTAL CON PLACA - SOCKET WELD

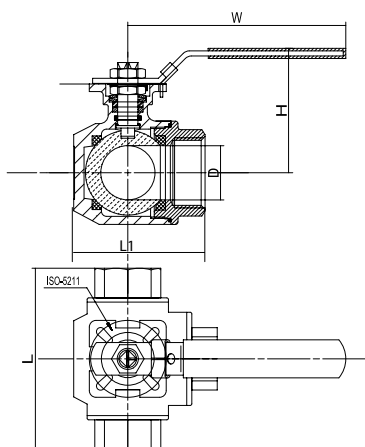
Cuerpo en acero inoxidable CF8M (AISI 316).
Eje en AISI 316.
Maneta en AISI 304 recubierta en PVC azul.
Asiento de la bola PTFE + 15% GF.
Temperatura de trabajo: -20° C a 180° C.
Presión de trabajo:
1000 WOG/PN 63 de 1/2" a 1 1/2".
600 WOG/PN 40 de 2" a 4".
Sistema de bloqueo.
Montaje actuador directo según ISO 5211.
Extremos para soldar Socket Weld ANSI B 16.11.



Ø	d mm.	L mm.	L2 mm.	H mm.	h mm.		COD.	€
1/2"	15	61	120,5	39,0	9	30 1	IVB3PS63	
3/4"	20	69	120,5	41,5	9	16 1	IVB3PS64	
1"	25	79	140,0	47,0	11	11 1	IVB3PS65	
1 1/4"	32	96	140,0	52,0	11	6 1	IVB3PS66	
1 1/2"	38	102	170,0	62,0	14	4 1	IVB3PS67	
2"	50	124	170,0	71,0	14	2 1	IVB3PS68	
2 1/2"	65	158	230,0	89,0	18	2 1	IVB3PS69	
3"	76	179	230,0	98,0	18	1 1	IVB3PS6A	
4"	94	220	300,0	129,0	22	1 1	IVB3PS6C	

VÁLVULA DE ESFERA TRES VÍAS PASO TIPO "T" O TIPO "L"


Ø	DN	L1 ±2 mm.	Ø D mm.	H mm.	W mm.	ISO 5211		COD. TIPO "T"	COD. TIPO "L"	€
1/4"	8	64	9,0	76	143	F04/03	15 1	IVBT0061	IVBL0061	
3/8"	10	64	11,0	76	143	F04/03	15 1	IVBT0062	IVBL0062	
1/2"	15	64	12,5	76	143	F04/03	13 1	IVBT0063	IVBL0063	
3/4"	20	68	16,0	80	143	F04/03	7 1	IVBT0064	IVBL0064	
1"	25	82	20,0	95	163	F05/04	5 1	IVBT0065	IVBL0065	
1 1/4"	32	90	25,0	98	163	F05/04	4 1	IVBT0066	IVBL0066	
1 1/2"	40	107	32,0	110	188	F07/05	3 1	IVBT0067	IVBL0067	
2"	50	124	38,0	119	188	F07/05	2 1	IVBT0068	IVBL0068	


CARACTERÍSTICAS TÉCNICAS

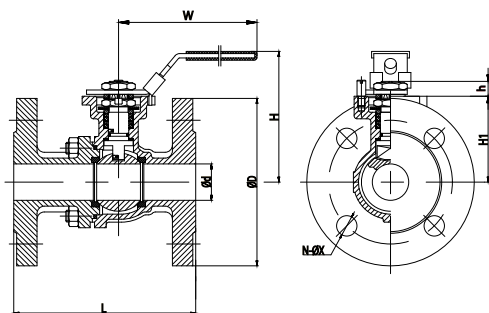
Presión de trabajo: PN 63.
 Temperatura de trabajo: -20° C a 180° C.
 Montaje actuador directo según ISO 5211.
 Extremos roscas ISO 7/1 (roscas R-Rp).

COMPONENTES

Cuerpo: Acero inoxidable CF8M (AISI 316)
Juntas: PTFE+15%GF
Junta del Eje: Vitón
Eje: AISI 316
Maneta: AISI 304 recubierta en PVC azul
Bola: AISI 316

VÁLVULA DE ESFERA PASO TOTAL DOS PIEZAS CON BRIDAS


Ø	DN	L mm.	Ø d mm.	Ø D mm.	H mm.	W mm.	ISO 5211		COD.	€
1/2"	15	115	15	95	76	110	F03-F04	1	IVB20015	
3/4"	20	120	20	105	81	110	F03-F04	1	IVB20020	
1"	25	125	25	115	90	140	F04-F05	1	IVB20025	
1 1/4"	32	130	32	140	102	140	F04-F05	1	IVB20032	
1 1/2"	40	140	38	150	114	185	F05-F07	1	IVB20040	
2"	50	150	50	165	122	185	F05-F07	1	IVB20050	
2 1/2"	65	170	65	185	168	305	F07-F10	1	IVB20B65	
3"	80	180	78	200	178	305	F07-F10	1	IVB20080	
4"	100	190	100	220	198	305	F07-F10	1	IVB20100	
5"	125	325	125	250	234	500	F10-F12	1	IVB20125	
6"	150	350	150	285	250	645	F10-F12	1	IVB20150	

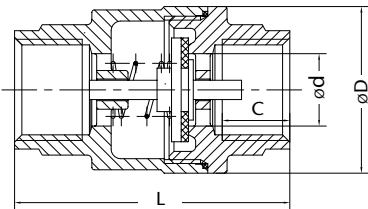

CARACTERÍSTICAS TÉCNICAS

Presión de trabajo: PN 40 de DN 15 a DN 40; PN 16 de DN 50 a DN 150.
 Temperatura de trabajo: -30° C a 180° C.
 Bridas DIN 2635 de DN 15 a DN 40; DIN 2633 de DN 50 a DN 150.
 Longitud entre caras según DIN 3202-F4.
 Fire Safe API607.
 Dispositivo antiestático.
 Montaje actuador directo según ISO 5211.
 Certificado ATEX según la Directiva 2014/34/EU.

COMPONENTES

Cuerpo: Acero inoxidable CF8M (AISI 316)
Juntas: PTFE+15%GF
Junta del Eje: Vitón
Eje: AISI 316
Maneta: A276 201 recubierta en PVC azul
Bola: AISI 316

VÁLVULA INOX RETENCIÓN ROSCADA PN 63



Ø	Ø d mm.	Ø D mm.	C mm.	L mm.	COD.	€
1/4"	10,5	30,0	12	54	IV130601	
3/8"	13,0	30,0	12	54	IV130602	
1/2"	15,0	34,5	14	57	IV130603	
3/4"	20,0	41,5	15	64	IV130604	
1"	25,0	48,6	18	80	IV130605	
1 1/4"	32,0	60,5	17	82	IV130606	
1 1/2"	40,0	71,0	18	93	IV130607	
2"	50,0	87,0	17	100	IV130608	

CARACTERÍSTICAS TÉCNICAS

Presión de trabajo: PN 63.

Extremos roscados según ISO 7/1.

Temperatura de trabajo: -20° C a 150° C.

Instalación en cualquier posición siempre respetando la dirección del fluido indicada por la flecha.

COMPONENTES

Cuerpo: CF8M (AISI 316)

Muelle: AISI 316

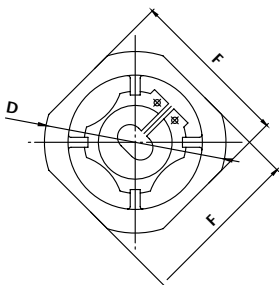
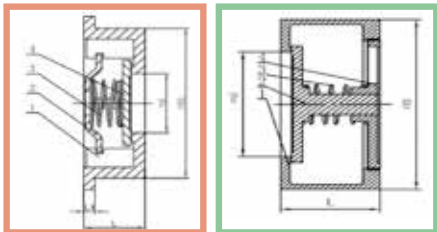
Disco: CF8M (AISI 316)

Junta disco: Viton

Tapa: CF8M (AISI 316)

Junta: PTFE

VÁLVULA INOX RETENCIÓN A DISCO TIPO WAFER PN 63



Ø	DN	Ø D mm.	F mm.	Ø D1 mm.	L1	L mm.	COD.	€
1/2"	15	53	46	43	4	16,5	IV566015	
3/4"	20	63	55	53	5	19,5	IV566020	
1"	25	73	65	63	4	22,0	IV566025	
1 1/4"	32	84	78	75	6	28,0	IV566032	
1 1/2"	40	94	88	86	6	32,0	IV566040	
2"	50	107	98	94	7	40,0	IV566050	
2 1/2"	65	126	118	115	7	46,0	IV566065	
3"	80	144	134	130	8	50,0	IV566080	
4"	100	164	154	152	9	60,0	IV566100	
5"	125	190				82,0	IV566125	
6"	150	217				102,0	IV566150	

CARACTERÍSTICAS TÉCNICAS

Presión de trabajo: PN 63.

Temperatura de trabajo: -20° C a 425° C.

Válidas para agua, gas, vapor, condensados, aceites y ácidos.

Instalación en cualquier posición siempre respetando la dirección del fluido indicada por la flecha.

Longitud entre caras según EN 558 serie 49 (salvo DN 125 y 150).

COMPONENTES

Cuerpo: CF8M (AISI 316)

SopORTE de muelle: AISI 304

Muelle: AISI 304

Disco: CF8M (AISI 316)

ACCESORIOS PARA SOLDAR - ISO

CODO 90° 3D DE TUBO SOLDADO

Ø	Ø mm.	DN	AISI 304L ESP. 2 mm.		AISI 316L ESP. 2 mm.		AISI 316L ESP. 3 mm.	
			COD.	€	COD.	€	COD.	€
1/2"	21,3	15	IC934203		IC936203			
3/4"	26,9	20	IC934204		IC936204			
1"	33,7	25	IC934205		IC936205		IC936305	
1 1/4"	42,4	32	IC934206		IC936206		IC936306	
1 1/2"	48,3	40	IC934207		IC936207		IC936307	
2"	60,3	50	IC934208		IC936208		IC936308	
2 1/2"	76,1	65	IC934209		IC936209		IC936309	
3"	88,9	80	IC93420A		IC93620A		IC93630A	
4"	114,3	100	IC93420C		IC93620C		IC93630C	
5"	139,7	125	IC93420D		IC93620D		IC93630D	
6"	168,3	150	IC93420E		IC93620E		IC93630E	
8"	219,1	200	IC93420F		IC93620F			
10"	273,0	250	IC93420G		IC93620G			
12"	323,9	300	IC93420H		IC93620H			


TE

Ø	Ø mm.	DN	AISI 304L ESP. 2 mm.		AISI 316L ESP. 2 mm.	
			COD.	€	COD.	€
1/2"	21,3	15	IT104203		IT106203	
3/4"	26,9	20	IT104204		IT106204	
1"	33,7	25	IT104205		IT106205	
1 1/4"	42,4	32	IT104206		IT106206	
1 1/2"	48,3	40	IT104207		IT106207	
2"	60,3	50	IT104208		IT106208	
2 1/2"	76,1	65	IT104209		IT106209	
3"	88,9	80	IT10420A		IT10620A	
4"	114,3	100	IT10420C		IT10620C	
5"	139,7	125	IT10420D		IT10620D	
6"	168,3	150	IT10420E		IT10620E	
8"	219,1	200	IT10420F		IT10620F	
10"	273,0	250	IT10420G		IT10620G	
12"	323,9	300	IT10420H		IT10620H	


CAP

Ø	Ø mm.	DN	AISI 304L ESP. 2 mm.		AISI 316L ESP. 2 mm.	
			COD.	€	COD.	€
1/2"	21,3	15	ICA04203		ICA06203	
3/4"	26,9	20	ICA04204		ICA06204	
1"	33,7	25	ICA04205		ICA06205	
1 1/4"	42,4	32	ICA04206		ICA06206	
1 1/2"	48,3	40	ICA04207		ICA06207	
2"	60,3	50	ICA04208		ICA06208	
2 1/2"	76,1	65	ICA04209		ICA06209	
3"	88,9	80	ICA0420A		ICA0620A	
4"	114,3	100	ICA0420C		ICA0620C	
5"	139,7	125	ICA0420D		ICA0620D	
6"	168,3	150	ICA0420E		ICA0620E	
8"	219,1	200	ICA0420F		ICA0620F	
10"	273,0	250	ICA0420G		ICA0620G	
12"	323,9	300	ICA0420H		ICA0620H	


VALONA

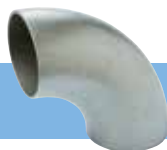
Ø	Ø mm.	DN	AISI 304L ESP. 2 mm.		AISI 316L ESP. 2 mm.	
			COD.	€	COD.	€
1/2"	21,3	15	ICT04203		ICT06203	
3/4"	26,9	20	ICT04204		ICT06204	
1"	33,7	25	ICT04205		ICT06205	
1 1/4"	42,4	32	ICT04206		ICT06206	
1 1/2"	48,3	40	ICT04207		ICT06207	
2"	60,3	50	ICT04208		ICT06208	
2 1/2"	76,1	65	ICT04209		ICT06209	
3"	88,9	80	ICT0420A		ICT0620A	
4"	114,3	100	ICT0420C		ICT0620C	
5"	139,7	125	ICT0420D		ICT0620D	
6"	168,3	150	ICT0420E		ICT0620E	
8"	219,1	200	ICT0420F		ICT0620F	
10"	273,0	250	ICT0420G		ICT0620G	
12"	323,9	300	ICT0420H		ICT0620H	

DISPONIBLE EN 3 mm. CONSULTAR



REDUCCIÓN CONCÉNTRICA

Ø	Ø mm.	DN	ALTURA mm.	AISI 304L ESP. 2 mm.		AISI 316L ESP. 2 mm.	
				COD.	€	COD.	€
3/4" x 1/2"	26,9 x 21,3	20 x 15	38	IRC04243		IRC06243	
1" x 1/2"	33,7 x 21,3	25 x 15	51	IRC04253		IRC06253	
1" x 3/4"	33,7 x 26,9	25 x 20	51	IRC04254		IRC06254	
1 1/4" x 1"	42,4 x 33,7	32 x 25	51	IRC04265		IRC06265	
1 1/2" x 1/2"	48,3 x 21,3	40 x 15	64	IRC04273		IRC06273	
1 1/2" x 1"	48,3 x 33,7	40 x 25	64	IRC04275		IRC06275	
1 1/2" x 1 1/4"	48,3 x 42,4	40 x 32	64	IRC04276		IRC06276	
2" x 1/2"	60,3 x 21,3	50 x 15	76	IRC04283		IRC06283	
2" x 3/4"	60,3 x 26,9	50 x 20	76	IRC04284		NEW IRC06284	
2" x 1"	60,3 x 33,7	50 x 25	76	IRC04285		IRC06285	
2" x 1 1/4"	60,3 x 42,4	50 x 32	76	IRC04286		IRC06286	
2" x 1 1/2"	60,3 x 48,3	50 x 40	76	IRC04287		IRC06287	
2 1/2" x 1 1/2"	76,1 x 48,3	65 x 40	89	IRC04297		IRC06297	
2 1/2" x 2"	76,1 x 60,3	65 x 50	89	IRC04298		IRC06298	
3" x 1"	88,9 x 33,7	80 x 25	89	IRC042A5		IRC062A5	
3" x 1 1/2"	88,9 x 48,3	80 x 40	89	IRC042A7		IRC062A7	
3" x 2"	88,9 x 60,3	80 x 50	89	IRC042A8		IRC062A8	
3" x 2 1/2"	88,9 x 76,1	80 x 65	89	IRC042A9		IRC062A9	
4" x 1 1/2"	114,3 x 48,3	100 x 40	102	IRC042C7		IRC062C7	
4" x 2"	114,3 x 60,3	100 x 50	102	IRC042C8		IRC062C8	
4" x 2 1/2"	114,3 x 76,1	100 x 65	102	IRC042C9		IRC062C9	
4" x 3"	114,3 x 88,9	100 x 80	102	IRC042CA		IRC062CA	
5" x 3"	139,7 x 88,9	125 x 80	127	IRC042DA		IRC062DA	
5" x 4"	139,7 x 114,3	125 x 100	127	IRC042DC		IRC062DC	
6" x 4"	168,3 x 114,3	150 x 100	140	IRC042EC		IRC062EC	
6" x 5"	168,3 x 139,7	150 x 125	140	IRC042ED		NEW IRC062ED	
8" x 3"	219,1 x 88,9	200 x 80	152			IRC062FA	
8" x 4"	219,1 x 114,3	200 x 100	152	IRC042FC		NEW IRC062FC	
8" x 5"	219,1 x 139,7	200 x 125	152	IRC042FD		IRC062FD	
8" x 6"	219,1 x 168,3	200 x 150	152	IRC042FE		NEW IRC062FE	
10" x 6"	273,0 x 168,3	250 x 150	178	IRC042GE		NEW IRC062GE	
10" x 8"	273,0 x 219,1	250 x 200	178	IRC042GF		NEW IRC062GF	
12" x 8"	323,9 x 219,1	300 x 200	203	IRC042HF		NEW IRC062HF	
12" x 10"	323,9 x 273,0	300 x 250	203	IRC042HG		NEW IRC062HG	

ACCESORIOS PARA SOLDAR - MILIMÉTRICO

CODO 90° 3D DE TUBO SOLDADO

Ø	Ø mm.	DN	R mm.	ESP. mm.	AISI 304L		AISI 316L	
					COD.	€	COD.	€
1/2"	18,0	15	25,0	1,5	IC341018		IC361018	
1/2"	20,0	15	30,0	1,5	IC341020		IC361020	
3/4"	23,0	20	35,0	1,5	IC341023			
3/4"	25,0	20	37,0	1,5	IC341025		IC361025	
3/4"	28,0	20	40,0	1,5	IC341028		IC361028	
3/4"	30,0	20	45,0	1,5	IC341030		IC361030	
1"	33,0	25	50,0	1,5	IC341033		IC361033	
1 1/4"	35,0	32	52,5	1,5	IC341035			
1 1/4"	38,0	32	55,0	1,5	IC341038			
1 1/2"	40,0	40	60,0	1,5	IC341040		IC361040	
1 1/2"	43,0	40	65,0	1,5	IC341043		IC361043	
2"	50,8	50	76,0	1,5	IC341051		IC361050	
2"	53,0	50	80,0	1,5	IC341053		IC361053	
2"	63,5	50	95,0	1,5	IC341063		IC361063	
2"	54,0	50	80,0	2,0	IC342054			
2"	57,0	50	85,5	2,0	IC342057			
2 1/2"	70,0	65	92,0	2,0	IC342070		IC362070	
2 1/2"	73,0	65	110,0	1,5	IC341073		IC361073	
2 1/2"	76,0	65	115,0	1,5	IC341076		IC361076	
3"	84,0	80	125,0	2,0	IC342084		IC362084	
4"	104,0	100	155,0	2,0	IC342104		IC362104	
5"	129,0	125	190,0	2,0	IC342129		IC362129	
6"	154,0	150	225,0	2,0	IC342154		IC362154	
8"	204,0	200	300,0	2,0	IC342204		IC362204	
10"	254,0	250	380,0	2,0	IC342254			


TE

Ø mm.	DN	ESP. mm.	AISI 304L		AISI 316L	
			COD.	€	COD.	€
25,0	20	1,5	ITM41025		ITM61025	
28,0	20	1,5	ITM41028		ITM61028	
33,0	25	1,5	ITM41033		ITM61033	
43,0	40	1,5	ITM41043		ITM61043	
50,8	50	1,5	ITM41050		ITM61050	
53,0	50	1,5	ITM41053		ITM61053	
63,5	50	1,5	ITM41063		ITM61063	
73,0	65	1,5	ITM41073		ITM61073	
84,0	80	2,0	ITM42084		ITM62084	
104,0	100	2,0	ITM42104		ITM62104	
129,0	125	2,0	ITM42129		ITM62129	
154,0	150	2,0	ITM42154		ITM62154	
204,0	200	2,0	ITM42204		ITM62204	
254,0	250	2,0	ITM42254		ITM62254	
304,0	300	2,0			ITM62304	
354,0	300	2,0			ITM62354	


CAP

Ø mm.	DN	ESP. mm.	AISI 304L		AISI 316L	
			COD.	€	COD.	€
25,0	20	1,5	ICAM4025		ICAM6025	
28,0	20	1,5	ICAM4028		ICAM6028	
33,0	25	1,5	ICAM4033		ICAM6033	
43,0	40	1,5	ICAM4043		ICAM6043	
50,8	50	1,5	ICAM4050		ICAM6050	
53,0	50	1,5	ICAM4053		ICAM6053	
63,5	50	1,5	ICAM4063		ICAM6063	
70,0	65	2,0	ICAM4070		ICAM6070	
73,0	65	1,5	ICAM4073		ICAM6073	
84,0	80	2,0	ICAM4084		ICAM6084	
104,0	100	2,0	ICAM4104		ICAM6104	
129,0	125	2,0	ICAM4129		ICAM6129	
154,0	150	2,0	ICAM4154		ICAM6154	
204,0	200	2,0	ICAM4204		ICAM6204	
254,0	250	2,0	ICAM4254		ICAM6254	
304,0	300	2,0	ICAM4304		ICAM6304	
354,0	300	2,0	ICAM4354		ICAM6354	



VALONA

Ø	DN	ESP. mm.	AISI 304L		AISI 316L	
			COD.	€	COD.	€
25,0	20	1,5	ICM41025		ICM61025	
28,0	20	1,5	ICM41028		ICM61028	
33,0	25	1,5	ICM41033		ICM61033	
43,0	40	1,5	ICM41043		ICM61043	
50,8	50	1,5	ICM41050		ICM61050	
53,0	50	1,5	ICM41053		ICM61053	
63,5	50	1,5	ICM41063		ICM61063	
70,0	65	2,0	ICM42070		ICM62070	
73,0	65	1,5	ICM41073		ICM61073	
84,0	80	2,0	ICM42084		ICM62084	
104,0	100	2,0	ICM42104		ICM62104	
129,0	125	2,0	ICM42129		ICM62129	
154,0	150	2,0	ICM42154		ICM62154	
204,0	200	2,0	ICM42204		ICM62204	
254,0	250	2,0	ICM42254		ICM62254	
304,0	300	2,0	ICM42304		ICM62304	
354,0	300	2,0	ICM42354		ICM62354	



REDUCCIÓN CONCÉNTRICA

Ø mm.	DN	ESP. mm.	AISI 304L		AISI 316L	
			COD.	€	COD.	€
53,0 x 43,0	50 x 40	1,5	IRM45343		IRM65343	
63,5 x 43,0	50 x 40	1,5	IRM46343		IRM66343	
63,5 x 53,0	50 x 50	1,5	IRM46353		IRM66353	
73,0 x 43,0	65 x 40	2,0	IRM47343		IRM67343	
73,0 x 53,0	65 x 50	2,0	IRM47353		IRM67353	
73,0 x 63,5	65 x 50	2,0	IRM47363		IRM67363	
84,0 x 43,0	80 x 40	2,0	IRM48443		IRM68443	
84,0 x 53,0	80 x 50	2,0	IRM48453		IRM68453	
84,0 x 63,5	80 x 50	2,0	IRM48463		IRM68463	
84,0 x 73,0	80 x 65	2,0	IRM48473		IRM68473	
104,0 x 43,0	100 x 40	2,0	IRM41043		IRM61043	
104,0 x 53,0	100 x 50	2,0	IRM41053		IRM61053	
104,0 x 63,5	100 x 50	2,0	IRM41063		IRM61063	
104,0 x 73,0	100 x 65	2,0	IRM41073		IRM61073	
104,0 x 84,0	100 x 80	2,0	IRM41084		IRM61084	
129,0 x 73,0	125 x 65	2,0	IRM41273		IRM61273	
129,0 x 84,0	125 x 80	2,0	IRM41284		IRM61284	
129,0 x 104,0	125 x 100	2,0	IRM41210		IRM61210	
154,0 x 73,0	150 x 65	2,0	IRM41573		IRM61573	
154,0 x 84,0	150 x 80	2,0	IRM41584		IRM61584	
154,0 x 104,0	150 x 100	2,0	IRM41510		IRM61510	
154,0 x 129,0	150 x 125	2,0	IRM41512		IRM61512	
204,0 x 104,0	200 x 100	2,0	IRM42010		IRM62010	
204,0 x 129,0	200 x 125	2,0	IRM42012		IRM62012	
204,0 x 154,0	200 x 150	2,0	IRM42015		IRM62015	

ACCESORIOS PARA SOLDAR - NORMA ASTM - SCH 10S FABRICADO TUBO SOLDADO

CURVA 90° LONG RADIUS

Ø	Ø EXT mm.	ESPE-SOR	AISI 304L		AISI 316L	
			COD.	€	COD.	€
1/2"	21,3	2,11	I1CL940M		I1CL960M	
3/4"	26,7	2,11	I1CL940T		I1CL960T	
1"	33,4	2,77	I1CL9401		I1CL9601	
1 1/4"	42,2	2,77	I1CL941C		I1CL961C	
1 1/2"	48,3	2,77	I1CL941M		I1CL961M	
2"	60,3	2,77	I1CL9402		I1CL9602	
2 1/2"	73,0	3,05	I1CL942M		I1CL962M	
3"	88,9	3,05	I1CL9403		I1CL9603	
4"	114,3	3,05	I1CL9404		I1CL9604	
5"	141,3	3,40	I1CL9405		I1CL9605	
6"	168,3	3,40	I1CL9406		I1CL9606	
8"	219,1	3,76	I1CL9408		I1CL9608	
10"	273,0	4,19	I1CL9410		I1CL9610	


TE

Ø	Ø EXT mm.	ESPE-SOR	AISI 304L		AISI 316L	
			COD.	€	COD.	€
1/2"	21,3	2,11	I1T4000M		I1T6000M	
3/4"	26,7	2,11	I1T4000T		I1T6000T	
1"	33,4	2,77	I1T40001		I1T60001	
1 1/4"	42,2	2,77	I1T4001C		I1T6001C	
1 1/2"	48,3	2,77	I1T4001M		I1T6001M	
2"	60,3	2,77	I1T40002		I1T60002	
2 1/2"	73,0	3,05	I1T4002M		I1T6002M	
3"	88,9	3,05	I1T40003		I1T60003	
4"	114,3	3,05	I1T40004		I1T60004	
5"	141,3	3,40	I1T40005		I1T60005	
6"	168,3	3,40	I1T40006		I1T60006	
8"	219,1	3,76	I1T40008		I1T60008	


CAP

Ø	Ø EXT mm.	ESPE-SOR	AISI 304L		AISI 316L	
			COD.	€	COD.	€
1/2"	21,3	2,11	I1CC400M		I1CC600M	
3/4"	26,7	2,11	I1CC400T		I1CC600T	
1"	33,4	2,77	I1CC4001		I1CC6001	
1 1/4"	42,2	2,77	I1CC401C		I1CC601C	
1 1/2"	48,3	2,77	I1CC401M		I1CC601M	
2"	60,3	2,77	I1CC4002		I1CC6002	
2 1/2"	73,0	3,05	I1CC402M		I1CC602M	
3"	88,9	3,05	I1CC4003		I1CC6003	
4"	114,3	3,05	I1CC4004		I1CC6004	
5"	141,3	3,40	I1CC4005		I1CC6005	
6"	168,3	3,40	I1CC4006		I1CC6006	
8"	219,1	3,76	I1CC4008		I1CC6008	


STUB END

Ø	Ø EXT mm.	ESPE-SOR	AISI 304L		AISI 316L	
			COD.	€	COD.	€
1/2"	21,3	2,11	I1SE400M		I1SE600M	
3/4"	26,7	2,11	I1SE400T		I1SE600T	
1"	33,4	2,77	I1SE4001		I1SE6001	
1 1/4"	42,2	2,77	I1SE401C		I1SE601C	
1 1/2"	48,3	2,77	I1SE401M		I1SE601M	
2"	60,3	2,77	I1SE4002		I1SE6002	
2 1/2"	73,0	3,05	I1SE402M		I1SE602M	
3"	88,9	3,05	I1SE4003		I1SE6003	
4"	114,3	3,05	I1SE4004		I1SE6004	
5"	141,3	3,40	I1SE4005		I1SE6005	
6"	168,3	3,40	I1SE4006		I1SE6006	
8"	219,1	3,76	I1SE4008		I1SE6008	
10"	273,0	4,19	I1SE4010		I1SE6010	



REDUCCIÓN CONCÉNTRICA

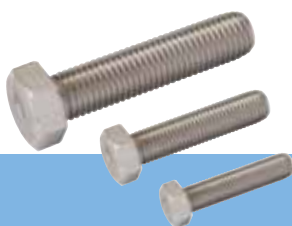
Ø	Ø EXT mm.	AISI 304L		AISI 316L	
		COD.	€	COD.	€
3/4" x 1/2"	26,7 x 21,3	I1R40T0M		I1R60T0M	
1" x 1/2"	33,4 x 21,3	I1R4010M		I1R6010M	
1" x 3/4"	33,4 x 26,7	I1R4010T		I1R6010T	
1 1/4" x 3/4"	42,2 x 26,7	I1R41C0T		I1R61C0T	
1 1/4" x 1"	42,2 x 33,4	I1R41C01		I1R61C01	
1 1/2" x 3/4"	48,3 x 26,7	I1R41M0T		I1R61M0T	
1 1/2" x 1"	48,3 x 33,4	I1R41M01		I1R61M01	
1 1/2" x 1 1/4"	48,3 x 42,2	I1R41M1C		I1R61M1C	
2" x 1"	60,3 x 33,4	I1R40201		I1R60201	
2" x 1 1/4"	60,3 x 42,2	I1R4021C		I1R6021C	
2" x 1 1/2"	60,3 x 48,3	I1R4021M		I1R6021M	
2 1/2" x 1 1/2"	73,0 x 48,3	I1R42M1M		I1R62M1M	
2 1/2" x 2"	73,0 x 60,3	I1R42M02		I1R62M02	
3" x 1 1/2"	88,9 x 48,3	I1R4031M		I1R6031M	
3" x 2"	88,9 x 60,3	I1R40302		I1R60302	
3" x 2 1/2"	88,9 x 73,0	I1R4032M		I1R6032M	
4" x 2"	114,3 x 60,3	I1R40402		I1R60402	
4" x 2 1/2"	114,3 x 73,0	I1R4042M		I1R6042M	
4" x 3"	114,3 x 88,9	I1R40403		I1R60403	
5" x 3"	141,3 x 88,9	I1R40503		I1R60503	
5" x 4"	141,3 x 114,3	I1R40504		I1R60504	
6" x 3"	168,3 x 88,9	I1R40603		I1R60603	
6" x 4"	168,3 x 114,3	I1R40604		I1R60604	
6" x 5"	168,3 x 141,3	I1R40605		I1R60605	
8" x 6"	219,1 x 168,3	I1R40806		I1R60806	

ACCESORIOS PARA SOLDAR - NORMA ASTM - SCH 40S FABRICADO TUBO SOLDADO



CURVA 90° LONG RADIUS

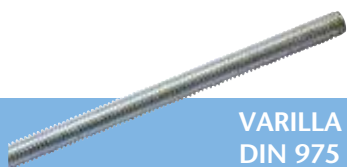
Ø	Ø EXT mm.	ESPESOR	AISI 316L	
			COD.	€
1/2"	21,3	2,77	I4CL960M	
3/4"	26,7	2,87	I4CL960T	
1"	33,4	3,38	I4CL9601	
1 1/4"	42,2	3,56	I4CL961C	
1 1/2"	48,3	3,68	I4CL961M	
2"	60,3	3,91	I4CL9602	
2 1/2"	73,0	5,16	I4CL962M	
3"	88,9	5,46	I4CL9603	
4"	114,3	6,02	I4CL9604	
5"	141,3	6,55	I4CL9605	
6"	168,3	7,11	I4CL9606	
8"	219,1	8,18	I4CL9608	
10"	273,0	9,27	I4CL9610	

TORNILLERÍA INOXIDABLE

**TORNILLO HEXAGONAL
DIN 933 - INOX A2**

MEDIDA	LONGITUD		COD.	€ 100 UNID.
M12	50	300 50	TI331250	
M12	60	300 50	TI331260	
M14	60	200 50	TI331460	
M14	70	150 50	TI331470	
M14	80	150 50	TI331480	
M16	40	200 25	TI331640	
M16	50	150 25	TI331650	
M16	60	150 25	TI331660	
M16	70	150 25	TI331670	
M16	80	100 25	TI331680	
M16	90	100 25	TI331690	
M16	100	100 25	TI331610	
M16	110	100 25	TI331611	
M16	120	75 25	TI331612	
M20	70	75 25	TI332070	
M20	80	75 25	TI332080	
M20	90	50 25	TI332090	
M20	100	50 25	TI332010	
M20	110	50 25	TI332011	
M20	120	50 25	TI332012	
M24	90	40 20	TI332490	
M27	120	20 10	TI332712	
M30	130	20 10	TI333013	
M33	140	15 5	TI333314	


**TUERCA HEXAGONAL
DIN 934 - INOX A2**

MEDIDA		COD.	€ 100 UNID.
M6	7.200 150	TI934006	
M8	3.750 125	TI934008	
M10	1.600 100	TI934010	
M12	1.200 100	TI934012	
M14	800 50	TI934014	
M16	600 50	TI934016	
M18	400 25	TI934018	
M20	300 25	TI934020	
M24	160 10	TI934024	
M27	100 10	TI934027	
M30	80 10	TI934030	
M33	50 5	TI934033	


**VARILLA ROSCADA 1.000 mm.
DIN 975 - INOX A2**

MEDIDA		COD.	€ 100 UNID.
M6	50	TI975006	
M8	25	TI975008	
M10	25	TI975010	
M12	20	TI975012	
M14	15	TI975014	
M16	10	TI975016	
M18	5	TI975018	
M20	5	TI975020	


**ARANDELA PLANA
DIN 125 - INOX A2**

MEDIDA		COD.	€ 100 UNID.
M6	7.200 150	TI125006	
M8	6.000 125	TI125008	
M10	4.800 100	TI125010	
M12	3.000 100	TI125012	
M14	2.100 70	TI125014	
M16	1.680 70	TI125016	
M18	1.200 50	TI125018	
M20	1.200 50	TI125020	
M24	600 50	TI125024	
M27	400 50	TI125027	
M30	300 50	TI125030	
M33	240 30	TI125033	

ABRAZADERAS



ABRAZADERA INOX AISI 304
M8/M10

Espesor de banda 2,5 mm.

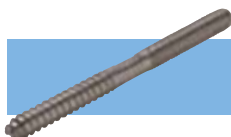
PULGADAS	mm.	TUERCA		COD.	€
3/8"	16-18	M8	150 2	IRAF5102	
1/2"	20-22	M8	100 2	IRAF5103	
3/4"	25-28	M8	100 2	IRAF5104	
1"	31-34	M8	100 2	IRAF5105	
1 1/4"	39-43	M8	100 2	IRAF5106	
1 1/2"	45-48.5	M8	100 2	IRAF5107	
2"	58-61	M8	100 2	IRAF5108	
2 1/2"	73-76.5	M10	50 2	IRAF5109	
3"	86-89	M10	50 2	IRAF510A	
4"	110-115	M10	50 2	IRAF510C	



ABRAZADERA INOX AISI 304
M8/M10 CON TACO Y TORNILLO

Espesor de banda 2,5 mm.

PULG.	mm.	TORNILLO	TACO		COD.	€
3/8"	16-18	M8x100	10x50	100 2	IRAF5502	
1/2"	20-22	M8x100	10x50	100 2	IRAF5503	
3/4"	25-28	M8x100	10x50	100 2	IRAF5504	
1"	31-34	M8x100	10x50	100 2	IRAF5505	
1 1/4"	39-43	M8x100	10x50	100 2	IRAF5506	
1 1/2"	45-48.5	M8x100	10x50	50 2	IRAF5507	
2"	58-61	M8x100	10x50	50 2	IRAF5508	
2 1/2"	73-76.5	M10x120	12x60	20 2	IRAF5509	
3"	86-89	M10x120	12x60	20 2	IRAF550A	
4"	110-115	M10x120	12x60	20 2	IRAF550C	



TORNILLO DOBLE ROSCA
INOX AISI 304

ROSCA	mm.		COD.	€
M8	90	500 10	IRAFTD08	
M10	120	500 10	IRAFTD10	

ABARCONES



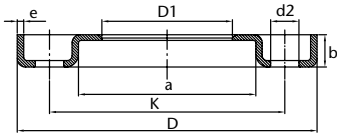
ABARCÓN INOXIDABLE AISI 304

Se suministran con tuercas y arandelas. Para medidas M6 y M8 las tuercas y arandelas están colocadas.

Ø TUBO	PULG.	ROSCA		COD.	€ 100 UDS.
17,1	3/8"	M6	100 10	RFABI202	
21,3	1/2"	M6	100 10	RFABI203	
26,9	3/4"	M6	100 10	RFABI204	
33,7	1"	M6	100 10	RFABI205	
38,0	-	M6	100 10	RFABI238	
42,2	1 1/4"	M6	100 5	RFABI206	
48,3	1 1/2"	M8	50 5	RFABI207	
54,0	-	M8	50 5	RFABI254	
60,3	2"	M8	50 5	RFABI208	
65,0	-	M8	50 5	RFABI265	
76,1	2 1/2"	M8	25 5	RFABI20A	
84,0	-	M8	25 5	RFABI284	
88,9	3"	M8	25 5	RFABI20B	
104,0	-	M10	20 2	RFABI210	
114,4	4"	M10	20 2	RFABI20D	
129,0	-	M10	20 2	RFABI213	
139,7	5"	M10	20 2	RFABI20E	
154,0	-	M10	16 2	RFABI215	
168,3	6"	M10	16 2	RFABI20F	
204,0	-	M10	10 2	RFABI220	
219,1	8"	M10	10 2	RFABI20H	
254,0	-	M10	6 2	RFABI225	
NEW 273,0	10"	M10	6 2	RFABI20N	
304,0	-	M10	6 2	RFABI230	



BRIDA PRENSADA



El montaje de las 2 bridas prensadas se hace con sus correspondientes valonas y juntas.
Con el adecuado par de apriete se consigue una perfecta estanqueidad a través de la junta correspondiente.

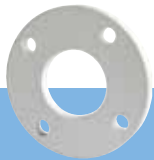
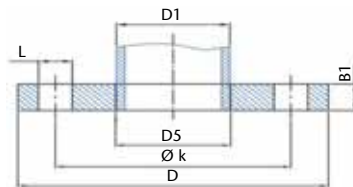
DN	Ø mm.	DIMENSIONES (mm.)								AISI 304L		AISI 316L	
		D1	D	K	a	e	b	d2	Nº Tal.	COD.	€	COD.	€
15	21,3	24	95	65	38	3	11,5	13,5	4	I4642015		I6642015	
20	26,9	30	105	75	48	3	14,0	13,5	4	I4642020		I6642020	
25	33,7	37	115	85	53	3	16,0	13,5	4	I4642025		I6642025	
32	42,4	46	140	100	68	3	16,5	17,5	4	I4642032		I6642032	
40	48,3	54	150	110	77	3	17,5	17,5	4	I4642040		I6642040	
50	60,3	65	165	125	91	3	19,5	17,5	4	I4642050		I6642050	
50	53,0	58	165	125	91	3	19,5	17,5	4	I4642053			
65	76,1	81	185	145	108	4	21,0	17,5	4	I4642065		I6642065	
65	73,0	78	185	145	108	4	21,0	17,5	4	I4642073			
80	88,9	94	200	160	123	4	22,0	17,5	8	I4642080		I6642080	
80	84,0	89	200	160	123	4	22,0	17,5	8	I4642084			
100	114,3	119	220	180	141	4	23,0	17,5	8	I4642100		I6642100	
100	104,0	110	220	180	141	4	23,0	17,5	8	I4642104			
125	139,7	145	250	210	168	5	25,0	17,5	8	I4642125		I6642125	
125	129,0	135	250	210	168	5	25,0	17,5	8	I4642129			
150	168,3	173	285	240	192	5	27,0	21,5	8	I4642150		I6642150	
150	154,0	160	285	240	192	5	27,0	21,5	8	I4642154			
200	219,1	225	340	295	245	6	31,0	21,5	8	I4642200		I6642200	
200	204,0	212	340	295	245	6	31,0	21,5	8	I4642204			
250	273,1	279	395	350	295	6	31,0	22,0	12	I4642250		I6642250	
250	254,0	262	395	350	295	6	31,0	22,0	12	I4642254			
300	323,9	329	445	400	345	6	34,0	22,0	12	I4642300		I6642300	

BRIDAS ALUMINIO



BRIDA ALUMINIO ISO SEGÚN DIN 2642

DN	Ø	D1	PN	DIMENSIONES (mm)			TORNILLO		B1	COD.	€
				D	K	D5 (ISO)	NR	L			
40	1"1/2	48,3	10	150	110	54	4	18	16	FPA10040	
50	2"	60,3	10	165	125	65	4	18	16	FPA10050	
65	2"1/2	76,1	10	185	145	81	4	18	16	FPA10065	
80	3"	88,9	10	200	160	94	8	18	18	FPA10080	
100	4"	114,3	10	220	180	119	8	18	18	FPA10100	
125	5"	139,7	10	250	210	145	8	18	18	FPA10125	
150	6"	168,3	10	285	240	173	8	22	18	FPA10150	
200	8"	219,1	10	340	295	225	8	22	20	FPA10200	
250	10"	273,0	10	395	350	279	12	22	22	FPA10250	
300	12"	323,9	10	445	400	329	12	22	22	FPA10300	



BRIDA ALUMINIO PLANA BLANCA DIN 2642

DN	Ø	D1	PN	NORMA	DIMENSIONES (mm)			TORNILLO		B1	COD.	€
					D	K	D5 (ISO)	NR	L			
25	1"	33,7	10	ISO	115	85	36	4	M12	12	FPAB0025	
32	1 1/4"	42,4	10	ISO	140	100	46	4	M16	16	FPAB0032	
40	1 1/2"	43,0	10	MÉTRICO	150	110	48	4	M16	16	FPABM043	
40	1 1/2"	48,3	10	ISO	150	110	54	4	M16	16	FPAB0040	
50	2"	53,0	10	MÉTRICO	165	125	60	4	M16	16	FPABM053	
50	2"	60,3	10	ISO	165	125	65	4	M16	16	FPAB0050	
65	2 1/2"	73,0	10	MÉTRICO	185	145	75	4	M16	16	FPABM073	
65	2 1/2"	76,1	10	ISO	185	145	81	4	M16	16	FPAB0065	
80	3"	84,0	10	MÉTRICO	200	160	90	8	M16	18	FPABM084	
80	3"	88,9	10	ISO	200	160	94	8	M16	18	FPAB0080	
100	4"	104,0	10	MÉTRICO	220	180	111	8	M16	18	FPABM104	
100	4"	114,3	10	ISO	220	180	119	8	M16	18	FPAB0100	
125	5"	129,0	10	MÉTRICO	250	210	136	8	M16	18	FPABM129	
125	5"	139,7	10	ISO	250	210	145	8	M16	18	FPAB0125	
150	6"	154,0	10	MÉTRICO	285	240	161	8	M20	18	FPABM154	
150	6"	168,3	10	ISO	285	240	173	8	M20	18	FPAB0150	
200	8"	204,0	10	MÉTRICO	340	295	212	8	M20	20	FPABM204	
200	8"	219,1	10	ISO	340	295	225	8	M20	20	FPAB0200	
250	10"	254,0	10	MÉTRICO	395	350	264	12	M20	22	FPABM254	
250	10"	273,0	10	ISO	395	350	279	12	M20	22	FPAB0250	
300	12"	304,0	10	MÉTRICO	445	400	315	12	M20	22	FPABM304	
300	12"	323,9	10	ISO	445	400	329	12	M20	22	FPAB0300	


BRIDAS INOXIDABLES FORJADAS

DIMENSIONES			BRIDA PLANA SEGÚN NORMA EN 1092-1 01										
			AISI 304L										
			PN 10		PN 16				PN 25		PN 40		
DN	PULG.	mm.	COD.	€	COD.	€	COD. EN	€			COD.	€	
15	1/2"	21,3	IF414015				IF414015			IF414015		IF414015	
20	3/4"	26,9	IF414020				IF414020			IF414020		IF414020	
25	1"	33,7	IF414025				IF414025			IF414025		IF414025	
32	1 1/4"	42,4	IF414032				IF414032			IF414032		IF414032	
40	1 1/2"	48,3	IF414040				IF414040			IF414040		IF414040	
50	2"	60,3	IF416050				IF416050			IF416050		IF416050	
65	2 1/2"	76,1	I4576065				I4576065						
65	2 1/2"	76,1	IF416065				IF416065			IF416065		IF416065	
80	3"	88,9	IF416080				IF416080			IF416080		IF416080	
100	4"	114,3	IF416100				IF416100			IF416100		IF416100	
125	5"	139,7	IF416125				IF416125			IF416125		IF416125	
150	6"	168,3	IF416150				IF416150			IF416150		IF416150	
200	8"	219,1	IF411200				IF416200			IF412200		IF414200	
250	10"	273,0	IF411250				IF416250			IF412250		IF414250	
300	12"	323,9	IF411300				IF416300			IF412300		IF414300	
350	14"	355,6	IF411350		I4502350*		IF416350						
400	16"	406,4	IF411400				IF416400						
450	18"	457,0	IF411450										
500	20"	508,0	IF411500		I4502500*		IF416500						
600	24"	610,0	IF411600		IF416600								
700	28"	711,0	IF411700		IF416700								
800	32"	813,0	IF411800		IF416800								

* Hasta fin de existencias

 Bridas no normalizadas
 4 Agujeros
 Según DIN 2502

DIMENSIONES			BRIDA CIEGA SEGÚN NORMA EN 1092-1 05					
			AISI 304L					
			PN 10		PN 16		PN 40	
DN	PULG.	mm.	COD.	€	COD.	€	COD.	€
15	1/2"	21,3	IF454015		IF454015		IF454015	
20	3/4"	26,9	I4527020*		I4527020*			
	3/4"	26,9	IF454020		IF454020		IF454020	
25	1"	33,7	IF454025		IF454025		IF454025	
32	1 1/4"	42,4						
	1 1/4"	42,4	IF454032		IF454032		IF454032	
40	1 1/2"	48,3	IF454040		IF454040		IF454040	
50	2"	60,3	IF456050		IF456050		IF456050	
65	2 1/2"	76,1	IF456065		IF456065			
80	3"	88,9	IF456080		IF456080			
100	4"	114,3	IF456100		IF456100			
125	5"	139,7	IF456125		IF456125			
150	6"	168,3	IF456150		IF456150			
200	8"	219,1	IF451200		IF456200			
250	10"	273,0	IF451250		IF456250			
300	12"	323,9	IF451300		IF456300			
350	14"	355,6	IF451350		IF456350			
400	16"	406,4	IF451400		IF456400			
500	20"	508,0	IF451500		IF456500			

* Hasta fin de existencias

 Según DIN 2527

BRIDA PLANA SEGÚN NORMA EN 1092-1 01

AISI 316L										
PN 10		PN 16				PN 25		PN40		
COD. DIN	€	COD.	€	COD. EN	€	COD.	€	COD.	€	
IF614015				IF614015		IF614015		IF614015		
IF614020				IF614020		IF614020		IF614020		
IF614025				IF614025		IF614025		IF614025		
IF614032				IF614032		IF614032		IF614032		
IF614040				IF614040		IF614040		IF614040		
IF616050				IF616050		IF616050		IF616050		
I6576065				I6576065						
IF616065				IF616065		IF614065		IF614065		
IF616080				IF616080		IF614080		IF614080		
IF616100				IF616100		IF614100		IF614100		
IF616125				IF616125		IF614125		IF614125		
IF616150				IF616150		IF614150		IF614150		
IF611200				IF616200		IF612200		IF614200		
IF611250				IF616250		IF612250		IF614250		
IF611300				IF616300		IF612300		IF614300		
IF611350		I6502350*		IF616350						
IF611400				IF616400						
IF611450										
IF611500				IF616500						
IF611600		IF616600								
IF611700		IF616700								
IF611800		IF616800								

ACCESORIOS
INOXIDABLES

BRIDA CIEGA SEGÚN NORMA EN 1092-1 05

AISI 316L						
PN 10		PN 16			PN40	
COD.	€	COD.	€	COD.	€	
IF654015		IF654015		IF654015		
IF654020		IF654020		IF654020		
IF654025		IF654025		IF654025		
I6527032*		I6527032*				
IF654032		IF654032		IF654032		
IF654040		IF654040		IF654040		
IF656050		IF656050		IF656050		
IF656065		IF656065				
IF656080		IF656080				
IF656100		IF656100				
IF656125		IF656125				
IF656150		IF656150				
IF651200		IF656200				
IF651250		IF656250				
IF651300		IF656300				
IF651350		IF656350				
IF651400		IF656400				
IF651500		IF656500				

DIMENSIONES			BRIDA CUELLO SEGÚN NORMA EN 1092-1 11					
			AISI 304L					
			PN 10		PN 16		PN 40	
DN	PULG.	mm.	COD.	€	COD.	€	COD.	€
15	1/2"	21,3	I4633015*		I4633015*			
	1/2"	21,3	IF424015		IF424015		IF424015	
20	3/4"	26,9	I4633020*		I4633020*			
	3/4"	26,9	IF424020		IF424020		IF424020	
25	1"	33,7	IF424025		IF424025		IF424025	
32	1 1/4"	42,4	I4633032*		I4633032*			
	1 1/4"	42,4	IF424032		IF424032		IF424032	
40	1 1/2"	48,3	IF424040		IF424040		IF424040	
50	2"	60,3	IF426050		IF426050		IF426050	
65	2 1/2"	76,1	I4633065		I4633065			
	2 1/2"	76,1	IF426065		IF426065			
80	3"	88,9	IF426080		IF426080			
100	4"	114,3	IF426100		IF426100			
125	5"	139,7	IF426125		IF426125			
150	6"	168,3	IF426150		IF426150			
200	8"	219,1			IF426200			
250	10"	273,0			IF426250			
300	12"	323,9			IF426300			
350	14"	355,6			IF426350			
400	16"	406,4			IF426400			
500	20"	508,0			IF426500			

* Hasta fin de existencias

4 Agujeros Según DIN 2633



DIMENSIONES			BRIDA PLANA MM SEGÚN NORMA EN 1092-1 01 / DIN 2576											
			AISI 304L						AISI 316L					
			PN 10		PN 16		PN 40		PN 10		PN 16		PN 40	
DN	PULG.	mm.	COD.	€	COD.	€	COD.	€	COD.	€	COD.	€	COD.	€
15	1/2"	18	IM414015		IM414015		IM414015		IM614015		IM614015		IM614015	
20	3/4"	23	IM414020		IM414020		IM414020		IM614020		IM614020		IM614020	
25	1"	28	IM414025		IM414025		IM414025		IM614025		IM614025		IM614025	
32	1 1/4"	38	IM414032		IM414032				IM614032		IM614032			
40	1 1/2"	43	IM414040		IM414040				IM614040		IM614040			
50	2"	53	IM416050		IM416050				IM616050		IM616050			
65	2 1/2"	73	IM416065		IM416065				IM616065		IM616065			
80	3"	84	IM416080		IM416080				IM616080		IM616080			
100	4"	104	IM416100		IM416100				IM616100		IM616100			
125	5"	129	IM416125		IM416125				IM616125		IM616125			
150	6"	154	IM416150		IM416150				IM616150		IM616150			
200	8"	204	IM411200		IM416200				IM611200		IM616200			
250	10"	254	IM411250		IM416250				IM611250		IM616250			
300	12"	304	IM411300		IM416300				IM611300		IM616300			

BRIDA CUELLO SEGÚN NORMA EN 1092-1 11

AISI 316L					
PN 10		PN 16		PN40	
COD.	€	COD.	€	COD.	€
IF624015		IF624015		IF624015	
IF624020		IF624020		IF624020	
IF624025		IF624025		IF624025	
IF624032		IF624032		IF624032	
IF624040		IF624040		IF624040	
IF626050		IF626050		IF626050	
I6633065		I6633065			
IF626065		IF626065			
IF626080		IF626080			
IF626100		IF626100			
IF626125		IF626125			
IF626150		IF626150			
		IF626200			
		IF626250			
		IF626300			
		IF626350			
		IF626400			
		IF626500			

BRIDA ROSCADA SEGÚN DIMENSIONES EN 1092-1 01

DIMENSIONES			AISI 304L								AISI 316L							
			PN 10-16				PN 40				PN 10-16				PN 40			
			DN	PULG.	mm.	COD.	€	COD.	€	COD. DIN	€	COD. EN	€					
15	1/2"	21,3	IR416015		IR416015		IR616015		IR616015									
20	3/4"	26,9	IR416020		IR416020		IR616020		IR616020									
25	1"	33,7	IR416025		IR416025		IR616025		IR616025									
32	1 1/4"	42,4	IR416032		IR416032		IR616032		IR616032									
40	1 1/2"	48,3	IR416040		IR416040		IR616040		IR616040									
50	2"	60,3	IR416050		IR416050		IR616050		IR616050									
65	2 1/2"	76,1	IR416065				IR616065											
80	3"	88,9	IR416080				IR616080											
100	4"	114,3	IR416100				IR616100											

BRIDA SEGÚN NORMA ASME B 16.5 ASTM A182 - 150 LBS.

DIMENSIONES			AISI 316L								
			WELDING NECK			SLIP ON			BLIND		
			DN	PULG.	mm.	COD.	€	COD.	€	COD.	€
15	1/2"	21,3	IN150015		IO150015		IB150015				
20	3/4"	26,9	IN150020		IO150020		IB150020				
25	1"	33,7	IN150025		IO150025		IB150025				
32	1 1/4"	42,4	IN150032		IO150032		IB150032				
40	1 1/2"	48,3	IN150040		IO150040		IB150040				
50	2"	60,3	IN150050		IO150050		IB150050				
65	2 1/2"	76,1	IN150065		IO150065		IB150065				
80	3"	88,9	IN150080		IO150080		IB150080				
100	4"	114,3	IN150100		IO150100		IB150100				
125	5"	139,7	IN150125		IO150125		IB150125				
150	6"	168,3	IN150150		IO150150		IB150150				
200	8"	219,1	IN150200		IO150200		IB150200				
250	10"	273,0	IN150250		IO150250		IB150250				

ACCESORIOS

**JUEGO JUNTA PTFE
VALV. INOX 2 PZS. BRIDADA**

Ø	COD.	€/Juego
1/2"	IVB2J015	
3/4"	IVB2J020	
1"	IVB2J025	
1 1/4"	IVB2J032	
1 1/2"	IVB2J040	
2"	IVB2J050	
2 1/2"	IVB2J065	
3"	IVB2J080	
4"	IVB2J100	
5"	IVB2J125	
6"	IVB2J150	


**JUEGO JUNTA PTFE
VALV. INOX 3 PZS.**

Ø	COD.	€/Juego
1/2"	IVB3PJ3	
3/4"	IVB3PJ4	
1"	IVB3PJ5	
1 1/4"	IVB3PJ6	
1 1/2"	IVB3PJ7	
2"	IVB3PJ8	
2 1/2"	IVB3PJ9	
3"	IVB3PJPA	
4"	IVB3PJPC	


**PLÁSTICO MANETA
ROJA VALV. INOX 1 PZ.**

Ø	COD.	€
1/4"	IVB1PMR1	
3/8"	IVB1PMR2	
1/2" - 3/4"	IVB1PMR3	
1" - 1 1/4"	IVB1PMR5	
1 1/2"	IVB1PMR7	
2"	IVB1PMR8	


**PLÁSTICO MANETA
ROJA VALV. INOX 2 PZS.**

Ø	COD.	€
1/4" - 1/2"	IVB2PMR1	
3/4"	IVB2PMR4	
1"	IVB2PMR5	
1 1/4"	IVB2PMR6	
1 1/2"	IVB2PMR7	
2"	IVB2PMR8	
2 1/2" - 3"	IVB2PMR9	
4"	IVB2PMRC	


**PLÁSTICO MANETA
ROJA VALV. INOX 3 PZS.**

Ø	COD.	€
1/4" - 1/2"	IVB3PMR1	
3/4" - 1"	IVB3PMR4	
1 1/4" - 1 1/2"	IVB3PMR6	
2"	IVB3PMR8	
2 1/2" - 3"	IVB3PMR9	
4"	IVB3PMRC	



**MALLA FILTRO "Y"
AISI 316**

Ø	COD.	€
1/2"	IVFM0063	
3/4"	IVFM0064	
1"	IVFM0065	
1 1/4"	IVFM0066	
1 1/2"	IVFM0067	
2"	IVFM0068	


ACCESORIOS INOXIDABLE ALIMENTARIO

RACORES NW - DIN 11851

CASQUILLO

Ø			SERIE 1				SERIE 2				MANDRINAR	
			COD. AISI 304	€	COD. AISI 316	€	COD. AISI 304	€	COD. AISI 316	€	COD. AISI 316	€
10	700	10									I3816M02	
15	700	10			I3816003					I3816203	I3816M03	
20	400	10			I3816004					I3816204	I3816M04	
25	225	5	I3814005		I3816005		I3814205		I3816205		I3816M05	
32	180	5	I3814006		I3816006		I3814206		I3816206		I3816M06	
40	150	5	I3814007		I3816007		I3814207		I3816207		I3816M07	
50	90	5	I3814008		I3816008		I3814208		I3816208		I3816M08	
65	48	2	I3814009		I3816009		I3814209		I3816209		I3816M09	
80	28	2	I381400A		I381600A		I381420A		I381620A		I3816M0A	
100	20	2	I381400C		I381600C		I381420C		I381620C		I3816M0C	
125	10	1			I381600D						I381620D	
150	5	1			I381600E						I381620E	

CONEXIÓN MACHO

Ø			SERIE 1				SERIE 2				MANDRINAR	
			COD. AISI 304	€	COD. AISI 316	€	COD. AISI 304	€	COD. AISI 316	€	COD. AISI 316	€
10	500	10									I3806M02	
15	500	10			I3806003					I3806203	I3806M03	
20	300	10			I3806004					I3806204	I3806M04	
25	160	5	I3804005		I3806005		I3804205		I3806205		I3806M05	
32	120	5	I3804006		I3806006		I3804206		I3806206		I3806M06	
40	75	5	I3804007		I3806007		I3804207		I3806207		I3806M07	
50	60	5	I3804008		I3806008		I3804208		I3806208		I3806M08	
65	36	2	I3804009		I3806009		I3804209		I3806209		I3806M09	
80	24	2	I380400A		I380600A		I380420A		I380620A		I3806M0A	
100	12	2	I380400C		I380600C		I380420C		I380620C		I3806M0C	
125	10	1			I380600D						I380620D	
150	5	1			I380600E						I380620E	


TUERCA AISI 304 ROSCADA

Ø			COD.	€
15	300	10	I3744003	
20	180	10	I3744004	
25	150	5	I3744005	
32	125	5	I3744006	
40	80	5	I3744007	
50	55	5	I3744008	
65	30	2	I3744009	
80	16	2	I374400A	
100	14	2	I374400C	
125	12	1	I374400D	
150	10	1	I374400E	


**TUERCA CIEGA AISI 304
CON JUNTA EPDM Y CADENA**

Ø			COD.	€
25	85	5	I3834005	
32	60	5	I3834006	
40	60	5	I3834007	
50	50	5	I3834008	
65	36	2	I3834009	
80	20	2	I383400A	
100	12	2	I383400C	


JUNTA RACOR

Ø			COD. EPDM	€	COD. NBR	€
15	300	10	IJAL0003		IJALN003	
20	300	10	IJAL0004		IJALN004	
25	680	10	IJAL0005		IJALN005	
32	900	10	IJAL0006		IJALN006	
40	700	10	IJAL0007		IJALN007	
50	700	10	IJAL0008		IJALN008	
65	600	10	IJAL0009		IJALN009	
80	600	10	IJAL000A		IJALN00A	
100	500	10	IJAL000C		IJALN00C	
125	-	6	IJAL000D		IJALN00D	
150	-	5	IJAL000E		IJALN00E	


JUNTA EPDM PARA TUERCA CIEGA

Ø			COD.	€
25	680	10	IJALCE05	
32	900	10	IJALCE06	
40	700	10	IJALCE07	
50	700	10	IJALCE08	
65	300	10	IJALCE09	
80	300	10	IJALCE0A	
100	250	10	IJALCE0C	

RACORES SMS 1146

CASQUILLO AISI 316L

Ø			COD.	€
25	225	5	I3816S05	
38	150	5	I3816S06	
51	90	5	I3816S07	
63,5	48	2	I3816S08	
76	40	2	I3816S09	
101,6	20	2	I3816S0A	
104	16	2	I3816S0C	


TUERCA AISI 304 ROSCADA

Ø			COD.	€
25	150	5	I3744S05	
38	60	5	I3744S06	
51	40	5	I3744S07	
63,5	30	2	I3744S08	
76	16	2	I3744S09	
101,6	14	2	I3744S0A	
104	14	2	I3744S0C	


CONEXIÓN MACHO AISI 316L

Ø			COD.	€
25	160	5	I3806S05	
38	120	5	I3806S06	
51	60	5	I3806S07	
63,5	36	2	I3806S08	
76	24	2	I3806S09	
101,6	12	2	I3806S0A	
104	12	2	I3806S0C	



JUNTA RACOR


Ø			COD. EPDM	€	COD. SILICONA	€
25	680	10	IJASE005		IJASS005	
38	900	10	IJASE006		IJASS006	
51	700	10	IJASE007		IJASS007	
63,5	700	10	IJASE008		IJASS008	
76	600	10	IJASE009		IJASS009	
101,6	600	10	IJASE00A		IJASS00A	
104	500	10	IJASE00C		IJASS00C	

ACCESORIOS CLAMP




ABRAZADERA CLAMP AISI 304

Ø	PULG.	CASQUILLO CLAMP mm.		COD.	€
	1/2" - 3/4"	25,0	150 1	IRFC4008	
10-15-20		34,0	100 1	IRFC4010	
25-32-40	1" - 1.5"	50,5	80 1	IRFC4025	
50	2"	64,0	70 1	IRFC4050	
	2 1/2"	77,5	60 1	IRFC4060	
65	3"	91,0	50 1	IRFC4065	
80	3.5"	106,0	40 1	IRFC4080	
100	4"	119,0	40 1	IRFC4100	



CASQUILLO CLAMP CIEGO AISI 316L

Ø	ESTÁNDAR	DIÁM. EXT TUBO		COD.	€
1/2" - 3/4"	3A	25,4	800 20	IRCB6009	
10 - 15 - 20	DIN	34,0	800 20	IRCB6010	
25 - 32 - 40	DIN	50,5	300 20	IRCB6025	
50	DIN	64,0	200 10	IRCB6050	
2 1/2"	3A	77,5	100 5	IRCB6060	
65	DIN	91,0	60 5	IRCB6065	
80	DIN	106,0	60 5	IRCB6080	
100	DIN	119,0	40 5	IRCB6100	




CASQUILLO CLAMP SOLDAR AISI 316L

Ø	ESTÁNDAR	DIÁM. EXT TUBO	DIÁM. EXT. CLAMP	LONGITUD		COD.	€
1/2"	3A	12,7	25,4	28,6	350 10	IRCC6009	
10	DIN	12,0	34,0	21,5	350 10	IRCC6010	
15	DIN	18,0	34,0	21,5	350 10	IRCC6015	
3/4"	3A	19,0	25,4	28,6	350 10	IRCC6016	
20	DIN	22,0	34,0	21,5	250 10	IRCC6020	
1"	3A	25,4	50,5	28,6	150 10	IRCC6022	
25	DIN	28,0	50,5	21,5	180 10	IRCC6025	
32	DIN	34,0	50,5	21,5	180 10	IRCC6032	
1 1/2"	3A	38,1	50,5	28,6	150 10	IRCC6035	
40	DIN	40,0	50,5	21,5	180 10	IRCC6040	
2"	3A	50,8	64,0	28,6	120 10	IRCC6048	
50	DIN	52,0	64,0	21,5	150 10	IRCC6050	
2 1/2"	3A	63,5	77,5	28,6	70 10	IRCC6060	
65	DIN	70,0	91,0	21,5	70 5	IRCC6065	
3"	3A	76,2	91,0	28,6	40 5	IRCC6073	
80	DIN	85,0	106,0	21,5	60 5	IRCC6080	
4"	3A	101,6	119,0	28,6	25 5	IRCC6097	
100	DIN	104,0	119,0	21,5	30 5	IRCC6100	




JUNTA CASQUILLO CLAMP


Ø	ESTÁNDAR	DIÁM. INT.	DIÁM. EXT.		COD. EPDM	€	COD. NBR	€
1/2"	3A	9,9	25,4	800 10	IRCJE009		IRCJN009	
10	DIN	10,2	34,0	800 10	IRCJE010		IRCJN010	
15	DIN	16,2	34,0	800 10	IRCJE015		IRCJN015	
3/4"	3A	16,2	25,4	800 10	IRCJE016		IRCJN016	
20	DIN	20,2	34,0	600 10	IRCJE020		IRCJN020	
1"	3A	22,8	50,5	600 10	IRCJE022		IRCJN022	
25	DIN	26,2	50,5	500 10	IRCJE025		IRCJN025	
32	DIN	32,2	50,5	500 10	IRCJE032		IRCJN032	
1 1/2"	3A	35,8	50,5	500 10	IRCJE035		IRCJN035	
40	DIN	38,2	50,5	500 10	IRCJE040		IRCJN040	
2"	3A	48,8	64,0	400 10	IRCJE048		IRCJN048	
50	DIN	50,2	64,0	400 10	IRCJE050		IRCJN050	
2 1/2"	3A	60,5	77,5	350 10	IRCJE060		IRCJN060	
65	DIN	66,2	91,0	350 5	IRCJE065		IRCJN065	
3"	3A	73,1	91,0	150 5	IRCJE073		IRCJN073	
80	DIN	81,2	106,0	150 5	IRCJE080		IRCJN080	
4"	3A	97,8	119,0	125 5	IRCJE097		IRCJN097	
100	DIN	100,2	119,0	125 5	IRCJE100		IRCJN100	

ACCESORIOS PARA SOLDAR - DIN 11852

CODO 90°


DN	ESPES. mm.	R mm.		SERIE 1					SERIE 2				
				DIAM. EXT. mm.	AISI 304		AISI 316L		DIAM. EXT. mm.	AISI 304		AISI 316L	
					COD.	€	COD.	€		COD.	€	COD.	€
10	1,5	26,0	10	12			IAC96010						
15	1,5	35,0	10	18			IAC96015		19			I2C96015	
20	1,5	40,0	9	22			IAC96020		23			I2C96020	
25	1,5	50,0	7	28	IAC94025		IAC96025		29	I2C94025		I2C96025	
32	1,5	55,0	5	34	IAC94032		IAC96032		35	I2C94032		I2C96032	
40	1,5	60,0	5	40	IAC94040		IAC96040		41	I2C94040		I2C96040	
50	1,5	70,0	4	52	IAC94050		IAC96050		53	I2C94050		I2C96050	
65	2,0	80,0	3	70	IAC94065		IAC96065						
80	2,0	90,0	2	85	IAC94080		IAC96080						
100	2,0	100,0	1	104	IAC94100		IAC96100						
125	2,0	187,5	1	129			IAC96125						
150	2,0	225,0	1	154			IAC96150						


TE

DN	ESPES. mm.	R mm.		SERIE 1					SERIE 2				
				DIAM. EXT. mm.	AISI 304		AISI 316L		DIAM. EXT. mm.	AISI 304		AISI 316L	
					COD.	€	COD.	€		COD.	€	COD.	€
10	1,5	26,0	4	12			IATL6010						
15	1,5	35,0	4	18			IATL6015		19			I2TL6015	
20	1,5	40,0	4	22			IATL6020		23			I2TL6020	
25	1,5	50,0	4	28	IATL4025		IATL6025		29	I2TL4025		I2TL6025	
32	1,5	55,0	4	34	IATL4032		IATL6032		35	I2TL4032		I2TL6032	
40	1,5	60,0	4	40	IATL4040		IATL6040		41	I2TL4040		I2TL6040	
50	1,5	70,0	3	52	IATL4050		IATL6050		53	I2TL4050		I2TL6050	
65	2,0	80,0	3	70	IATL4065		IATL6065						
80	2,0	90,0	2	85	IATL4080		IATL6080						
100	2,0	100,0	1	104	IATL4100		IATL6100						
125	2,0	187,5	1	129			IATL6125						
150	2,0	225,0	1	154			IATL6150						



REDUCCIÓN CONCÉNTRICA AISI 316L

DN	ESPESES. mm.		SERIE 1			SERIE 2		
			DIAM. EXT. mm.	COD.	€	DIAM. EXT. mm.	COD.	€
DN 15 - DN 10	1,5	10	18 x 12	IARC6032				
DN 20 - DN 10	1,5	10	22 x 12	IARC6042				
DN 20 - DN 15	1,5	10	22 x 18	IARC6043		23 x 19	I2RC6043	
DN 25 - DN 10	1,5	10	28 x 12	IARC6052				
DN 25 - DN 15	1,5	10	28 x 18	IARC6053				
DN 25 - DN 20	1,5	10	28 x 22	IARC6054		29 x 23	I2RC6054	
DN 32 - DN 15	1,5	10	34 x 18	IARC6063				
DN 32 - DN 20	1,5	10	34 x 22	IARC6064		35 x 23	I2RC6064	
DN 32 - DN 25	1,5	10	34 x 28	IARC6065		35 x 29	I2RC6065	
DN 40 - DN 20	1,5	10	40 x 22	IARC6074		41 x 23	I2RC6074	
DN 40 - DN 25	1,5	10	40 x 28	IARC6075		41 x 29	I2RC6075	
DN 40 - DN 32	1,5	10	40 x 34	IARC6076		41 x 35	I2RC6076	
DN 50 - DN 25	1,5	10	52 x 28	IARC6085		53 x 29	I2RC6085	
DN 50 - DN 32	1,5	10	52 x 34	IARC6086		53 x 35	I2RC6086	
DN 50 - DN 40	1,5	10	52 x 40	IARC6087		53 x 41	I2RC6087	
DN 65 - DN 32	2,0	1	70 x 34	IARC6096		70 x 35	I2RC6096	
DN 65 - DN 40	2,0	1	70 x 40	IARC6097		70 x 41	I2RC6097	
DN 65 - DN 50	2,0	1	70 x 52	IARC6098		70 x 53	I2RC6098	
DN 80 - DN 40	2,0	1	85 x 40	IARC60A7		85 x 41	I2RC60A7	
DN 80 - DN 50	2,0	1	85 x 52	IARC60A8		85 x 53	I2RC60A8	
DN 80 - DN 65	2,0	1	85 x 70	IARC60A9				
DN 100 - DN 50	2,0	1	104 x 52	IARC60C8		104 x 53	I2RC60C8	
DN 100 - DN 65	2,0	1	104 x 70	IARC60C9				
DN 100 - DN 80	2,0	1	104 x 85	IARC60CA				

ACCESORIOS PARA SOLDAR - SMS 1146

CODO 90°

DN	ESPESES. mm.	DIAM. EXT. mm.	R mm.		AISI 304		AISI 316L	
					COD.	€	COD.	€
25	1,5	25,4	38,1	7	ISC94025		ISC96025	
38	1,5	38,1	57,2	5	ISC94038		ISC96038	
51	1,5	50,8	76,1	4	ISC94051		ISC96051	
63	1,5	63,5	95,2	3	ISC94063		ISC96063	
76	2,0	76,1	114,0	2	ISC94076		ISC96076	
101	2,0	101,6	110,0	1	ISC94101		ISC96101	


TE AISI 316L

DN	ESPESES. mm.	DIAM. EXT. mm.		COD.	€
25	1,5	25,4	4	ISTL6025	
38	1,5	38,1	4	ISTL6038	
51	1,5	50,8	2	ISTL6051	
63	1,5	63,5	1	ISTL6063	
76	2,0	76,1	1	ISTL6076	
101	2,0	101,6	1	ISTL6101	


REDUCCIÓN CONCÉNTRICA AISI 316L

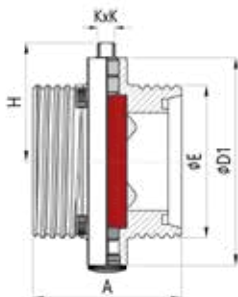
DN	DIAM. EXT. mm.		COD.	€
DN 38 - DN 25	38,1 x 25,4	10	ISR63825	
DN 51 - DN 25	50,8 x 25,4	10	ISR65125	
DN 51 - DN 38	50,8 x 38,1	10	ISR65138	
DN 63 - DN 38	63,5 x 38,1	1	ISR66338	
DN 63 - DN 51	63,5 x 50,8	1	ISR66351	
DN 76 - DN 51	76,1 x 50,8	1	ISR67651	
DN 76 - DN 63	76,1 x 63,5	1	ISR67663	
DN 101 - DN 63	101,6 x 63,5	1	ISR61063	
DN 101 - DN 76	101,6 x 76,1	1	ISR61076	

VÁLVULAS



VÁLVULA DE MARIPOSA ALIMENTARIO DIN 11851 - ROSCAR / ROSCAR

Fabricada en acero inoxidable AISI 304.
Elastómero en EPDM.
Extremos roscados según DIN 11851.
Presión máxima de trabajo: PN 10.
Rango de temperaturas: -20° C a 130° C.

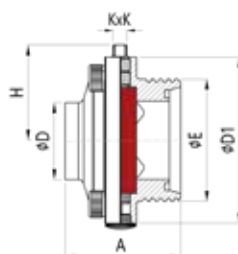


Ø	H	Ø E	KxK	A	Ø D1		COD.	€
25	50,5	RD52x1/6"	8 x 8	66	78	16 1	IV90E025	
32	54,5	RD58x1/6"	8 x 8	70	86	16 1	IV90E032	
40	56,0	RD65x1/6"	8 x 8	74	95	16 1	IV90E040	
50	64,0	RD78x1/6"	8 x 8	76	108	8 1	IV90E050	
65	74,0	RD95x1/6"	8 x 8	84	125	8 1	IV90E065	
80	81,5	RD110x1/4"	10 x 10	90	140	6 1	IV90E080	
100	91,5	RD130x1/4"	10 x 10	104	160	4 1	IV90E100	



VÁLVULA DE MARIPOSA ALIMENTARIO DIN 11851 - ROSCAR / SOLDAR

Fabricada en acero inoxidable AISI 304.
Elastómero en EPDM.
Extremos roscados según DIN 11851/soldar.
Presión máxima de trabajo: PN 10.
Rango de temperaturas: -20° C a 130° C.

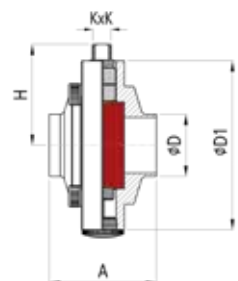


Ø	H	Ø D	Ø E	KxK	A	Ø D1		COD.	€
25	50,5	28	RD52x1/6"	8 x 8	58	78	16 1	IV91E025	
32	54,5	34	RD58x1/6"	8 x 8	58	86	16 1	IV91E032	
40	56,0	40	RD65x1/6"	8 x 8	60	95	16 1	IV91E040	
50	64,0	52	RD78x1/6"	8 x 8	64	108	12 1	IV91E050	
65	74,0	70	RD95x1/6"	8 x 8	68	125	8 1	IV91E065	
80	81,5	85	RD110x1/4"	10 x 10	71	140	8 1	IV91E080	
100	91,5	104	RD130x1/4"	10 x 10	84	160	4 1	IV91E100	



VÁLVULA DE MARIPOSA ALIMENTARIO DIN 11851 - SOLDAR / SOLDAR

Fabricada en acero inoxidable AISI 304.
Elastómero en EPDM.
Extremos soldar / soldar.
Presión máxima de trabajo: PN 10.
Rango de temperaturas: -20° C a 130° C.

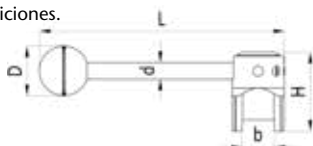


Ø	H	Ø D	KxK	A	Ø D1		COD.	€
25	50,5	28	8 x 8	50	78	16 1	IV92E025	
32	54,5	34	8 x 8	50	86	16 1	IV92E032	
40	56,0	40	8 x 8	50	95	16 1	IV92E040	
50	64,0	52	8 x 8	52	108	12 1	IV92E050	
65	74,0	70	8 x 8	56	125	8 1	IV92E065	
80	81,5	85	10 x 10	60	140	8 1	IV92E080	
100	91,5	104	10 x 10	64	160	4 1	IV92E100	



MANETA PARA VÁLVULA MARIPOSA DIN 11851

Fabricada en acero inoxidable AISI 304.
Accionamiento manual en 3 posiciones.



Ø	D	d	b	H	L		COD.	€
25-65	32	10,5	20,2	50	153	60 1	IV9P0025	
80-100	40	12,0	22,1	56	203	40 1	IV9P0080	



JUNTA PARA VÁLVULA MARIPOSA DIN 11851



Ø		COD. EPDM	€	COD. NBR	€	COD. SILICONA	€
25	384 2	IV9GE025		IV9GN025		IV9GS025	
32	210 2	IV9GE032		IV9GN032		IV9GS032	
40	148 2	IV9GE040		IV9GN040		IV9GS040	
50	160 2	IV9GE050		IV9GN050		IV9GS050	
65	84 2	IV9GE065		IV9GN065		IV9GS065	
80	30 2	IV9GE080		IV9GN080		IV9GS080	
100	36 2	IV9GE100		IV9GN100		IV9GS100	



DISCO PARA VÁLVULA MARIPOSA DIN 11851

Ø		COD.	€
25	1	IV9D0025	
32	1	IV9D0032	
40	1	IV9D0040	
50	1	IV9D0050	
65	1	IV9D0065	
80	1	IV9D0080	
100	1	IV9D0100	



ATUSA GRUPO EMPRESARIAL S.A.

Polígono Industrial ATUSA - Agurain
01200 SALVATIERRA - Álava - **ESPAÑA**

Tel. +34 945180000

comercial@atusagroup.com

www.atusagroup.com