



**MESSING**  
KLEMMVERVINDER  
FÜR PE-ROHR

**PREILISTE 2022**

## MESSING KLEMMVERVINDER FÜR PE-ROHR

Klemmverbinder für Rohre aus Polyethylen, hergestellt aus Messing CW617N gem. Norm EN 12165.

Klemmverbindung mittels AUSSENGEWINDE.

Die Rohrverbinder werden gem. EN 1254.4. produziert.  
Gewinde ISO 7-1.

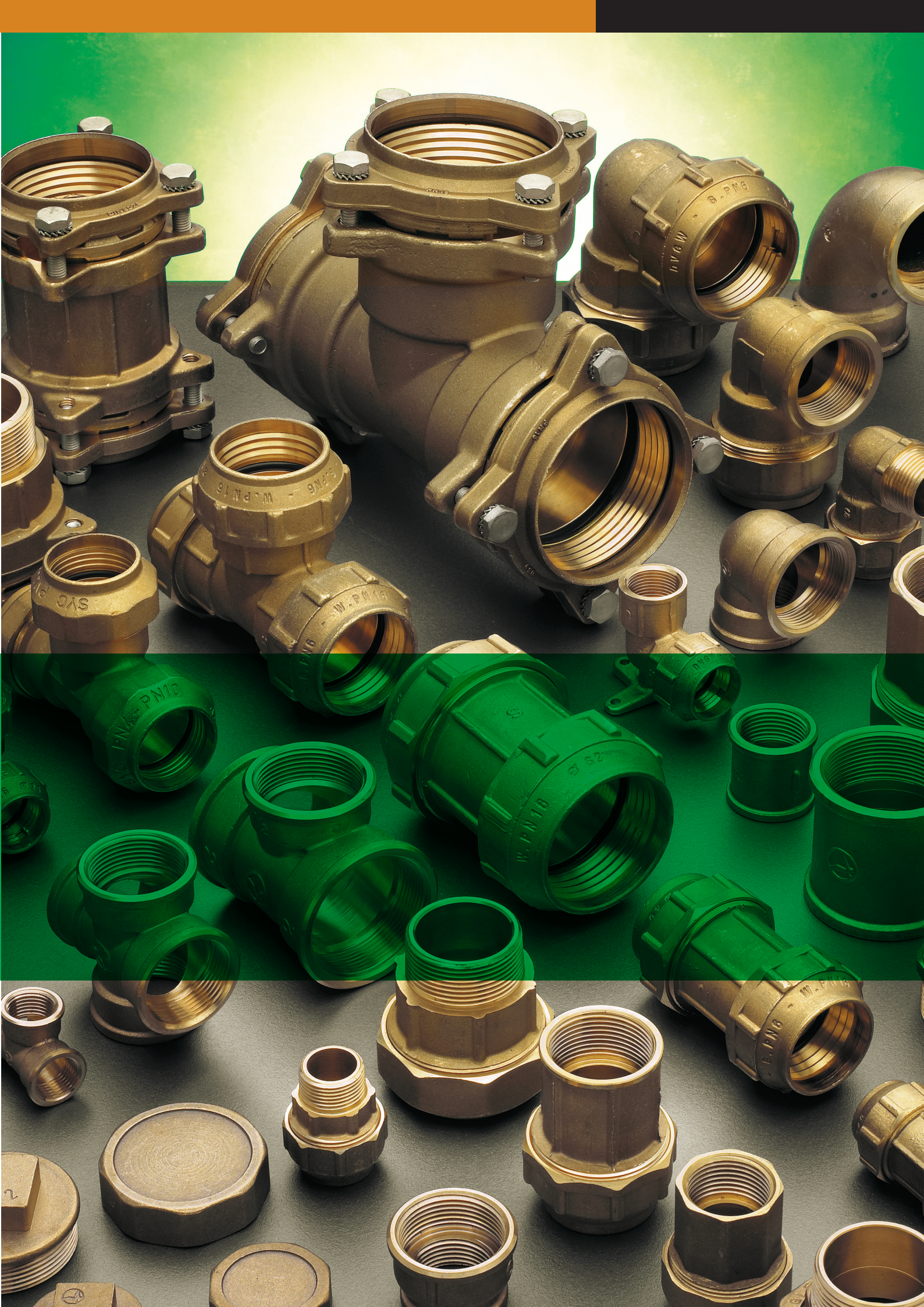
Um Probleme mit Undichtigkeiten durch Rohrdeformationen zu vermeiden, wird für die Installation die Verwendung einer Stützhülse empfohlen.

Betriebsdruck max.: PN 25

Betriebstemperatur max.: 60° C

DVGW Zulassung für Trinkwasser vorhanden.







DN20 - DN63



DN75 - DN110



DN20 - DN63



DN75 - DN110



DN20 - DN63



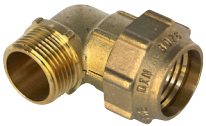
DN75 - DN110



DN20 - DN63



DN75 - DN110



DN20 - DN63



DN75 - DN110



DN20 - DN63



DN75 - DN110



DN20 - DN63



DN75 - DN110



DN20 - DN63



DN75 - DN110



DN0 - DN32



DN2 - DN50




DN32 - DN63



DN20 - DN63


## DOPPELVERSCHRAUBUNG



Ø			ART-NR	€
20	50	10	LPGRD020	6,70
25	30	10	LPGRD025	10,20
32	20	5	LPGRD032	14,10
40	12	4	LPGRD040	23,85
50	8	4	LPGRD050	34,60
63	3		LPGRD063	58,20
75	4	1	LPGRD075 *	119,00
90	4	1	LPGRD090 *	176,00
110	2	1	LPGRD110 *	261,00


## VERSCHRAUBUNG AG



Ø			ART-NR	€
1/2" x 20	90	10	LPGRM320	3,85
3/4" x 25	60	10	LPGRM425	5,70
1" x 32	35	5	LPGRM532	8,80
1 1/4" x 40	20	5	LPGRM640	14,65
1 1/2" x 50	12	4	LPGRM750	21,60
2" x 63	6	3	LPGRM863	34,45
2 1/2" x 75	6	1	LPGRMA75 *	70,00
3" x 90	5	1	LPGRMB90 *	102,50
4" x 110	3	1	LPGRM110 *	164,05

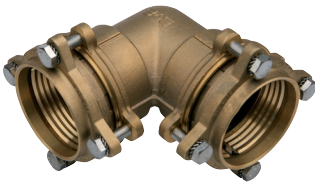
## VERSCHRAUBUNG IG



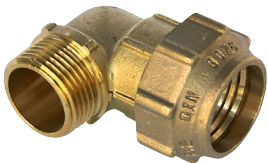
Ø			ART-NR	€
1/2" x 20	80	10	LPGRH320	4,25
3/4" x 25	60	10	LPGRH425	6,60
1" x 32	30	5	LPGRH532	9,20
1 1/4" x 40	20	5	LPGRH640	15,70
1 1/2" x 50	8	4	LPGRH750	23,70
2" x 63	6	3	LPGRH863	41,00
2 1/2" x 75	6	1	LPGRHA75 *	70,50
3" x 90	5	1	LPGRHB90 *	106,25
4" x 110	3	1	LPGRH110 *	157,60

 Flanschverbindung

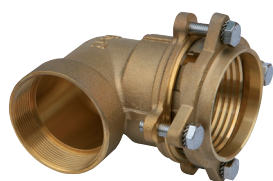
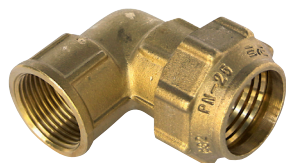
\* OHNE ZULASSUNG

**WINKELVERSCHRAUBUNG**


Ø			ART-NR	€
20	40	10	LPGCD020	7,60
25	20	10	LPGCD025	11,95
32	15	5	LPGCD032	17,20
40	10	5	LPGCD040	29,55
50	5		LPGCD050	45,00
63	3		LPGCD063	73,00
75	3	1	LPGCD075 *	149,00
90	1		LPGCD090 *	243,00
110	1		LPGCD110 *	372,00

**WINKELVERSCHRAUBUNG AG**


Ø			ART-NR	€
1/2" x 20	70	10	LPGCM320	5,35
3/4" x 25	40	10	LPGCM425	8,10
1" x 32	25	5	LPGCM532	11,95
1 1/4" x 40	10	5	LPGCM640	20,25
1 1/2" x 50	10	5	LPGCM750	30,20
2" x 63	4		LPGCM863	52,05
2 1/2" x 75	4	1	LPGCMA75 *	97,00
3" x 90	2	1	LPGCMB90 *	161,10
4" x 110	1		LPGCM110 *	239,10

**WINKELVERSCHRAUBUNG IG**


Ø			ART-NR	€
1/2" x 20	70	10	LPGCH320	5,60
3/4" x 25	40	10	LPGCH425	8,60
1" x 32	25	5	LPGCH532	13,00
1 1/4" x 40	10	5	LPGCH640	21,85
1 1/2" x 50	8	4	LPGCH750	32,20
2" x 63	4		LPGCH863	54,80
2 1/2" x 75	4	1	LPGCHA75 *	95,50
3" x 90	2	1	LPGCHB90 *	151,00
4" x 110	1		LPGCH110 *	232,00

Flanschverbindung

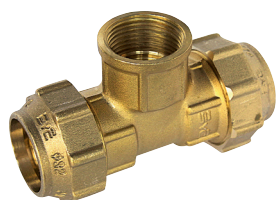
\* OHNE ZULASSUNG

## T-VERSCHRAUBUNG



Ø	📦		ART-NR	€
20	30	10	LPGTD020	10,85
25	20	5	LPGTD025	16,50
32	10	5	LPGTD032	24,50
40	6		LPGTD040	41,75
50	4		LPGTD050	64,00
63	3		LPGTD063	105,00
75	2	1	LPGTD075 *	227,15
90	1		LPGTD090 *	350,00
110	1		LPGTD110 *	536,00

## T-VERSCHRAUBUNG MIT IG ABGANG



Ø	📦		ART-NR	€
1/2" x 20	30	10	LPGTH320	8,55
3/4" x 25	20	5	LPGTH425	13,25
1" x 32	15	5	LPGTH532	19,60
1 1/4" x 40	6		LPGTH640	33,30
1 1/2" x 50	4		LPGTH750	55,00
2" x 63	3		LPGTH863	85,05
2 1/2" x 75	2	1	LPGTHA75 *	163,35
3" x 90	1		LPGTHB90 *	253,70
4" x 110	1		LPGTH110 *	439,65



## WINKEL FLANSCH MIT IG

Ø	📦		ART-NR	€
1/2" x 20	40	10	LPGCP320	7,50
3/4" x 25	20	5	LPGCP425	11,50
1" x 32	15	5	LPGCP532	16,90



## 45° WINKELVERSCHRAUBUNG AG

Ø	📦		ART-NR	€
1" x 32	25	5	LPGC4532	15,20
1 1/4" x 40	10	5	LPGC4540	26,90
1 1/2" x 50	10	5	LPGC4550	42,65



## VERLÄNGERUNGSMUFFE

Ø	📦		ART-NR	€
32	18	1	LPGRR032	25,70
40	10	1	LPGRR040	36,15
50	5	1	LPGRR050	54,35
63	3	1	LPGRR063	87,10



## STÜTZHÜLSE

Ø	📦		ART-NR	€
20	250	10	LPGVR020	1,65
25	150	10	LPGVR025	2,35
32	100	10	LPGVR032	4,60
40	50	10	LPGVR040	5,00
50	40	10	LPGVR050	7,55
63	20	1	LPGVR063	22,35

Flanschverbindung

\* OHNE ZULASSUNG



**ATUSA DEUTSCHLAND GmbH**  
Breitscheider Weg 117a  
D-40885 RATINGEN - **DEUTSCHLAND**  
Tel. +49 2102 92914 0  
[info.germany@atusagroup.com](mailto:info.germany@atusagroup.com)  
[www.atusagroup.com](http://www.atusagroup.com)