

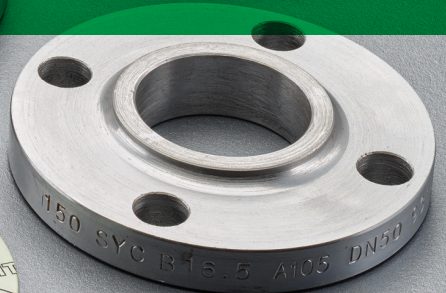
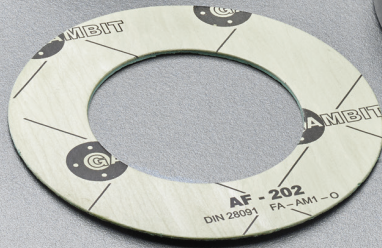
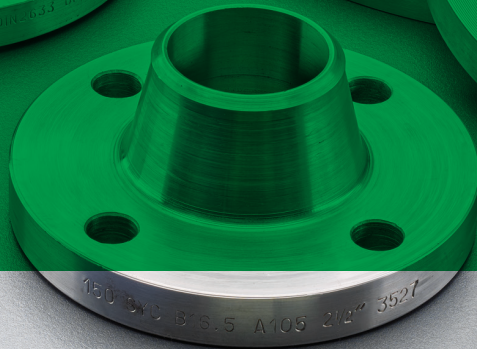
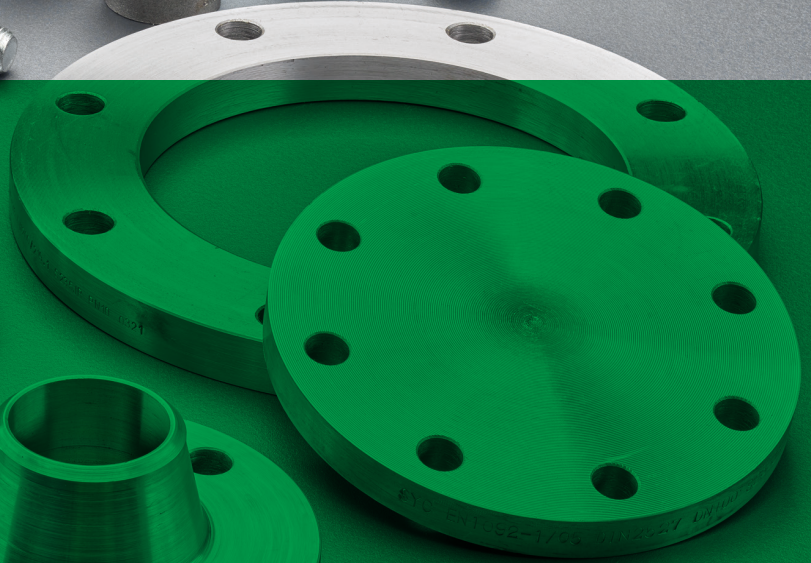
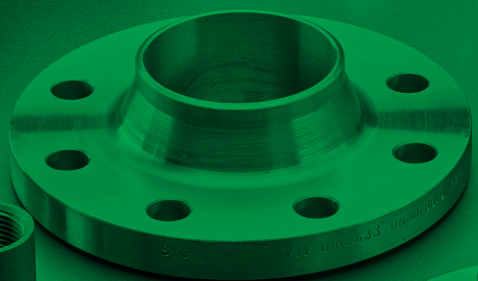
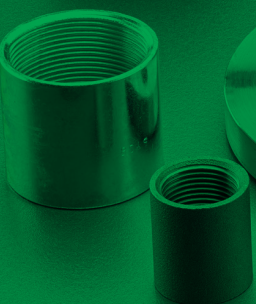
ROHRZUBEHÖR  
**STAHL**

**PREILISTE 2022**

## ROHRZUBEHÖR **STAHL**

ATUSA ist auch Lieferant für Rohzubehör aus Stahl.

Wir verstehen, dass Stahlrohrzubehör Hand in Hand mit dem Sortiment Gewindefittings aus Guss geht. Daher bieten wir ebenfalls ein breites und ständig wachsendes Sortiment an Stahlittings an.



**ROHRFITTINGS ZUM ANSCHWEISSEN  
EN NORM**

**ROHRBOGEN 3D EN 10253-1 - STAHL S235**

ABMESSUNGEN		45°		90°		90° VERZINKT		90° MIT NAHT		180°	
Ø	Ø AD. X WANDSTÄRKE mm.	ART-NR	€	ART-NR	€	ART-NR	€	ART-NR	€	ART-NR	€
1/2"	21,3 x 2,0	C3450021	1,45	C3XXXX21	1,45	C3GXXX21	1,65			C3180021	3,60
3/4"	26,9 x 2,3	C3450027	1,45	C3XXXX27	1,45	C3GXXX27	1,80	C3HXXX27	1,30	C3180027	3,60
1"	33,7 x 2,6	C3450033	1,75	C3XXXX33	1,85	C3GXXX33	2,15	C3HXXX33	1,45	C3180033	4,15
	38,0 x 2,6			C3XXXX38	3,45						
1 1/4"	42,4 x 2,6	C3450042	2,25	C3XXXX42	2,35	C3GXXX42	3,05	C3HXXX42	1,85	C3180042	5,70
	44,5 x 2,6			C3XXXX44	3,80						
1 1/2"	48,3 x 2,6	C3450048	2,80	C3XXXX48	2,90	C3GXXX48	3,95	C3HXXX48	2,30	C3180048	7,00
	* 51,0 x 2,6			C3XXXX51	4,70						
	54,0 x 2,6			C3XXXX54	6,80						
	57,0 x 2,9			C3XXXX57	5,30						
2"	60,3 x 2,9	C3450060	4,50	C3XXXX60	4,50	C3GXXX60	6,60	C3HXXX60	3,70	C3180060	11,15
	70,0 x 2,9			C3XXXX70	8,45	C3GXXX70	10,45				
2 1/2"	76,1 x 2,9	C3450076	6,60	C3XXXX76	7,00	C3GXXX76	10,50	C3HXXX76	5,80	C3180076	16,35
3"	88,9 x 3,2	C3450089	9,55	C3XXXX89	10,20	C3GXXX89	15,75	C3HXXX89	8,45	C3180089	24,10
3 1/2"	101,6 x 3,6	C3450101	16,75	C3XXX101	19,90	C3GXX101	25,55	C3HXX101	17,60	C3180101	46,45
	108,0 x 3,6			C3XXX108	22,60	C3GXX108	28,90				
4"	114,3 x 3,6	C3450114	17,25	C3XXX114	19,10	C3GXX114	29,90	C3HXX114	15,75	C3180114	47,65
	133,0 x 4,0			C3XXX133	38,20	C3GXX133	49,95				
5"	139,7 x 4,0	C3450139	29,45	C3XXX139	32,60	C3GXX139	51,70	C3HXX139	26,55	C3180139	81,40
	159,0 x 4,5			C3XXX159	55,15	C3GXX159	75,55				
6"	168,3 x 4,5	C3450168	42,45	C3XXX168	47,30	C3GXX168	78,30	C3HXX168	38,75	C3180168	118,35
7"	193,7 x 5,6			C3XXX193	158,55						
8"	219,1 x 6,3	C3450219	89,95	C3XXX219	111,70	C3GXX219	181,20				
	244,5 x 6,3			C3XXX244	388,70						
10"	273,0 x 6,3	C3450273	159,85	C3XXX273	190,45	C3GXX273	306,35				
12"	323,9 x 7,1	C3450324	260,15	C3XXX324	287,45						
14"	355,6 x 8,0	C3450355	384,05	C3XXX355	442,75						
16"	406,4 x 8,8	C3450406	543,05	C3XXX406	615,25						
18"	* 457,2 x 9,53			C3XXX457	1.183,65						
20"	* 508,0 x 9,53			C3XXX508	1.666,35						
24"	* 609,6 x 9,53			C3XXX609	2.949,20						

\* Entsprechen nicht der Norm EN 10253



## ROHRBOGEN 5D EN 10253-1 - STAHL S235

ABMESSUNGEN		45°		90°		90° VERZINKT		180°	
Ø	Ø AD. X WANDSTÄRKE mm.	ART-NR	€	ART-NR	€	ART-NR	€	ART-NR	€
1/2"	21,3 x 2,0	C5450021	3,85	C5XXXX21	3,85				
3/4"	26,9 x 2,3	C5450027	4,70	C5XXXX27	4,70	CSGXXX27	4,60	C5180027	12,00
1"	33,7 x 2,6	C5450033	4,70	C5XXXX33	4,70	CSGXXX33	5,45	C5180033	12,00
1 1/4"	42,4 x 2,6	C5450042	6,20	C5XXXX42	6,20	CSGXXX42	7,50	C5180042	16,25
1 1/2"	48,3 x 2,6	C5450048	7,95	C5XXXX48	7,95	CSGXXX48	9,70	C5180048	20,25
2"	60,3 x 2,9	C5450060	11,15	C5XXXX60	11,15	CSGXXX60	13,95	C5180060	28,60
	70,0 x 2,9			C5XXXX70	38,20				
2 1/2"	76,1 x 2,9	C5450076	16,50	C5XXXX76	16,50	CSGXXX76	22,50	C5180076	41,50
3"	88,9 x 3,2	C5450089	23,85	C5XXXX89	25,65	CSGXXX89	34,55	C5180089	66,25
3 1/2"	101,6 x 3,6	C5450101	52,45	C5XXX101	57,50				
	108,0 x 3,6			C5XXX108	57,60				
4"	114,3 x 3,6	C5450114	46,40	C5XXX114	49,85	CSGXX114	64,10	C5180114	128,55
	133,0 x 4,0			C5XXX133	109,30				
5"	139,7 x 4,0			C5XXX139	85,10	CSGXX139	116,25		
	159,0 x 4,5			C5XXX159	169,80				
6"	168,3 x 4,5			C5XXX168	140,75	CSGXX168	179,05		
8"	219,1 x 6,3			C5XXX219	352,95	CSGXX219	438,25		
10"	273,0 x 6,3			C5XXX273	724,75	CSGXX273	797,35		
12"	323,9 x 7,1			C5XXX324	1.218,95				


**KAPPEN EN 10253-1 - STAHL 235**

Ø	Ø AD. mm.	WAND. mm.	ART-NR	€
3/4"	* 26,9	2,3	CCXXXX27	0,85
1"	33,7	2,6	CCXXXX34	0,85
1 1/4"	42,4	2,6	CCXXXX42	0,90
1 1/2"	48,3	2,6	CCXXXX48	0,95
2"	60,3	2,9	CCXXXX60	1,25
	70,0	2,9	CCXXXX70	1,75
2 1/2"	76,1	2,9	CCXXXX76	1,80
3"	88,9	3,2	CCXXXX89	2,15
3 1/2"	101,6	3,6	CCXXX101	6,05
	108,0	3,6	CCXXX108	6,45
4"	114,3	3,6	CCXXX114	6,05
	133,0	4,0	CCXXX133	8,40

Ø	Ø AD. mm.	WAND. mm.	ART-NR	€
5"	139,7	4,0	CCXXX140	9,25
	159,0	4,5	CCXXX159	16,05
6"	168,3	4,5	CCXXX168	16,70
7"	193,7	5,6	CCXXX193	28,45
8"	219,1	6,3	CCXXX219	31,10
	244,5	6,3	CCXXX245	39,05
10"	273,0	6,3	CCXXX273	45,55
12"	323,9	7,1	CCXXX324	63,70
14"	355,6	8,0	CCXXX356	110,55
16"	406,4	8,8	CCXXX406	149,10
18"	* 457,0	8,0	CCXXX457	261,20
20"	* 508,0	8,0	CCXXX508	290,30
24"	* 610,0	8,0	CCXXX610	521,15

\* Entsprechen nicht der Norm EN 10253


**T-STÜCKE EN 10253-1 - STAHL S235**

Ø	Ø AD. mm.	WAND. mm.	ART-NR	€
1/2"	21,3	2,0	CTDXXX21	4,90
3/4"	26,9	2,3	CTDXXX27	5,55
1"	33,7	2,6	CTDXXX33	5,95
1 1/4"	42,4	2,6	CTDXXX42	7,20
1 1/2"	48,3	2,6	CTDXXX48	9,15
2"	60,3	2,9	CTDXXX60	11,70
2 1/2"	76,1	2,9	CTDXXX76	18,70
3"	88,9	3,2	CTDXXX89	26,15
3 1/2"	101,6	3,6	CTDXX101	55,75

Ø	Ø AD. mm.	WAND. mm.	ART-NR	€
4"	114,3	3,6	CTDXX114	38,65
5"	139,7	4,0	CTDXX139	61,00
6"	168,3	4,5	CTDXX168	85,85
8"	219,1	6,3	CTDXX219	197,60
10"	273,0	6,3	CTDXX273	403,30
12"	323,9	7,1	CTDXX323	621,15
14"	355,6	8,0	CTDXX355	779,65
16"	406,4	8,8	CTDXX406	1.113,75



## KONZENTRISCHE REDUZIERUNGEN EN 10253-1 FORM 2 - STAHL S235

Ø	Ø AD. mm.	WAND. mm.	ART-NR	€
3/4" x 1/2"	26,9 x 21,3	2,3 - 2,0	CRXX2721	3,40
1" x 1/2"	33,7 x 21,3	2,6 - 2,0	CRXX3321	3,40
1" x 3/4"	33,7 x 26,9	2,6 - 2,3	CRXX3327	3,05
1 1/4" x 1/2"	42,4 x 21,3	2,6 - 2,0	CRXX4221	5,65
1 1/4" x 3/4"	42,4 x 26,9	2,6 - 2,3	CRXX4227	3,80
1 1/4" x 1"	42,4 x 33,7	2,6 - 2,6	CRXX4233	3,30
1 1/2" x 1/2"	* 48,3 x 21,3	2,6 - 2,0	CRXX4821	7,60
1 1/2" x 3/4"	48,3 x 26,9	2,6 - 2,3	CRXX4827	4,90
1 1/2" x 1"	48,3 x 33,7	2,6 - 2,6	CRXX4833	4,05
1 1/2" x 1 1/4"	48,3 x 42,4	2,6 - 2,6	CRXX4842	3,50
2" x 3/4"	* 60,3 x 26,9	2,9 - 2,3	CRXX6027	8,30
2" x 1"	60,3 x 33,7	2,9 - 2,6	CRXX6033	5,50
2" x 1 1/4"	60,3 x 42,4	2,9 - 2,6	CRXX6042	5,05
2" x 1 1/2"	60,3 x 48,3	2,9 - 2,6	CRXX6048	4,50
2 1/2" x 1"	* 76,1 x 33,7	2,9 - 2,6	CRXX7633	13,55
2 1/2" x 1 1/4"	76,1 x 42,4	2,9 - 2,6	CRXX7642	8,30
2 1/2" x 1 1/2"	76,1 x 48,3	2,9 - 2,6	CRXX7648	6,40
2 1/2" x 2"	76,1 x 60,3	2,9 - 2,9	CRXX7660	5,90
3" x 1 1/4"	* 88,9 x 42,4	3,2 - 2,6	CRXX8942	13,15
3" x 1 1/2"	88,9 x 48,3	3,2 - 2,6	CRXX8948	10,30
3" x 2"	88,9 x 60,3	3,2 - 2,9	CRXX8960	8,35
3" x 2 1/2"	88,9 x 76,1	3,2 - 2,9	CRXX8976	7,70
3 1/2" x 2"	* 101,6 x 60,3	3,6 - 2,9	CRX10160	16,70
3 1/2" x 2 1/2"	* 101,6 x 76,1	3,6 - 2,9	CRX10176	14,10
3 1/2" x 3"	* 101,6 x 88,9	3,6 - 3,2	CRX10189	12,30
	* 108,0 x 60,3	3,6 - 2,9	CRX10860	16,85
	* 108,0 x 76,1	3,6 - 2,9	CRX10876	14,20
	* 108,0 x 88,9	3,6 - 3,2	CRX10889	12,70
4" x 1 1/2"	* 114,3 x 48,3	3,6 - 2,6	CRX11448	18,55
4" x 2"	114,3 x 60,3	3,6 - 2,9	CRX11460	13,60
4" x 2 1/2"	114,3 x 76,1	3,6 - 2,9	CRX11476	12,25
4" x 3"	114,3 x 88,9	3,6 - 3,2	CRX11489	11,70
4" x 3 1/2"	* 114,3 x 101,6	3,6 - 3,6	CR114101	15,55
	* 133,0 x 76,1	4,0 - 2,9	CRX13376	29,70
	* 133,0 x 88,9	4,0 - 3,2	CRX13389	24,75
	* 133,0 x 101,6	4,0 - 3,6	CR133101	26,60
	* 133,0 x 108,0	4,0 - 3,6	CR133108	24,90
	* 133,0 x 114,3	4,0 - 3,6	CR133114	22,00

Ø	Ø AD. mm.	WAND. mm.	ART-NR	€
5" x 2"	* 139,7 x 60,3	4,0 - 2,9	CRX13960	35,05
5" x 2 1/2"	139,7 x 76,1	4,0 - 2,9	CRX13976	27,10
5" x 3"	139,7 x 88,9	4,0 - 3,2	CRX13989	22,35
5" x 3 1/2"	* 139,7 x 101,6	4,0 - 3,6	CR139101	29,05
	* 139,7 x 108,0	4,0 - 3,6	CR139108	24,80
5" x 4"	139,7 x 114,3	4,0 - 3,6	CR139114	20,65
	* 159,0 x 88,9	4,5 - 3,2	CRX15989	38,35
	* 159,0 x 108,0	4,5 - 3,6	CR159108	35,35
	* 159,0 x 114,3	4,5 - 3,6	CR159114	34,15
	* 159,0 x 133,0	4,5 - 4,0	CR159133	30,10
	* 159,0 x 139,7	4,5 - 4,0	CR159139	30,10
6" x 2 1/2"	* 168,3 x 76,1	4,5 - 2,9	CRX16876	43,90
6" x 3"	168,3 x 88,9	4,5 - 3,2	CRX16889	35,80
6" x 4"	168,3 x 114,3	4,5 - 3,6	CR168114	28,60
6" x 5"	168,3 x 139,7	4,5 - 4,0	CR168139	26,25
	* 193,7 x 114,3	5,6 - 3,6	CR193114	131,45
	* 193,7 x 133,0	5,6 - 4,0	CR193133	124,90
	* 193,7 x 159,0	5,6 - 4,5	CR193159	105,50
	* 193,7 x 168,3	5,6 - 4,5	CR193168	100,85
8" x 4"	219,1 x 114,3	6,3 - 3,6	CR219114	65,05
	* 219,1 x 133,0	6,3 - 4,0	CR219133	75,55
8" x 5"	219,1 x 139,7	6,3 - 4,0	CR219139	59,75
	* 219,1 x 159,0	6,3 - 4,5	CR219159	69,40
8" x 6"	219,1 x 168,3	6,3 - 4,5	CR219168	49,40
10" x 5"	273,0 x 139,7	6,3 - 4,0	CR273139	113,75
10" x 6"	273,0 x 168,3	6,3 - 4,5	CR273168	96,00
10" x 8"	273,0 x 219,1	6,3 - 6,3	CR273219	76,80
12" x 6"	323,9 x 168,3	7,1 - 4,5	CR323168	176,65
12" x 8"	323,9 x 219,1	7,1 - 6,3	CR323219	151,35
12" x 10"	323,9 x 273,0	7,1 - 6,3	CR323273	141,55
14" x 8"	355,6 x 219,1	8,0 - 6,3	CR355219	414,00
14" x 10"	355,6 x 273,0	8,0 - 6,3	CR355273	386,40
14" x 12"	355,6 x 323,9	8,0 - 7,1	CR355323	358,80
16" x 10"	406,4 x 273,0	8,8 - 6,3	CR406273	546,50
16" x 12"	406,4 x 323,9	8,8 - 7,1	CR406323	538,20
16" x 14"	406,4 x 355,6	8,8 - 8,0	CR406355	524,40

\* Entsprechen nicht der Norm EN 10253

## ROHRFITTINGS ZUM ANSCHWEISSEN-ASTM NORM ROHRBOGEN ASTM A-234 WPB - ASME B 16.9



ABMESSUNGEN		STD								XS					
		LANGER RADIUS						KURZER RADIUS		LANGER RADIUS				KURZER RADIUS	
		90°		45°		180°		90°		90°		45°		90°	
Ø	Ø AD. mm.	ART-NR	€	ART-NR	€	ART-NR	€	ART-NR	€	ART-NR	€	ART-NR	€	ART-NR	€
1/2"	21,3	CSTL900M	2,20	CSTL450M	1,40					CXSL900M	3,50	CXSL450M	1,95		
3/4"	26,7	CSTL900T	2,45	CSTL450T	1,60					CXSL900T	3,60	CXSL450T	2,00		
1"	33,4	CSTL9001	3,10	CSTL4501	2,05			CSTS9001	3,45	CXSL9001	4,60	CXSL4501	2,20	CXSS9001	6,25
1 1/4"	42,2	CSTL901C	3,45	CSTL451C	2,30			CSTS901C	5,75	CXSL901C	5,65	CXSL451C	3,40	CXSS901C	7,95
1 1/2"	48,3	CSTL901M	4,25	CSTL451M	2,35	CSTL181M	8,80	CSTS901M	5,80	CXSL901M	6,35	CXSL451M	4,10	CXSS901M	8,35
2"	60,3	CSTL9002	6,80	CSTL4502	3,90	CSTL1802	19,90	CSTS9002	6,80	CXSL9002	9,45	CXSL4502	6,00	CXSS9002	10,80
2 1/2"	73,0	CSTL902M	12,80	CSTL452M	7,35	CSTL182M	35,15	CSTS902M	12,90	CXSL902M	17,25	CXSL452M	11,15	CXSS902M	19,80
3"	88,9	CSTL9003	19,45	CSTL4503	11,25	CSTL1803	51,40	CSTS9003	20,65	CXSL9003	25,05	CXSL4503	16,10	CXSS9003	28,80
3 1/2"	101,6	CSTL903M	27,30	CSTL453M	16,75					CXSL903M	42,85	CXSL453M	28,10		
4"	114,3	CSTL9004	33,95	CSTL4504	20,00	CSTL1804	82,85	CSTS9004	34,50	CXSL9004	49,10	CXSL4504	30,55	CXSS9004	49,35
5"	141,3	CSTL9005	58,30	CSTL4505	34,45	CSTL1805	140,35	CSTS9005	59,50	CXSL9005	88,15	CXSL4505	55,45	CXSS9005	94,45
6"	168,3	CSTL9006	90,05	CSTL4506	58,35	CSTL1806	243,00	CSTS9006	96,55	CXSL9006	148,70	CXSL4506	96,65	CXSS9006	157,25
8"	219,1	CSTL9008	170,20	CSTL4508	110,35			CSTS9008	182,75	CXSL9008	321,10	CXSL4508	207,80	CXSS9008	284,90
10"	273,0	CSTL9010	308,70	CSTL4510	200,15			CSTS9010	376,95	CXSL9010	474,90	CXSL4510	307,40	CXSS9010	445,55
12"	323,8	CSTL9012	444,65	CSTL4512	288,30			CSTS9012	557,05	CXSL9012	692,95	CXSL4512	446,45	CXSS9012	677,60
14"	355,6	CSTL9014	607,95	CSTL4514	362,25			CSTS9014	696,05	CXSL9014	1.015,95	CXSL4514	646,80	CXSS9014	969,80
16"	406,4	CSTL9016	780,15	CSTL4516	483,00			CSTS9016	910,55	CXSL9016	1.384,30	CXSL4516	879,80	CXSS9016	1.415,10
18"	457,0	CSTL9018	1.070,80	CSTL4518	661,40										
20"	508,0	CSTL9020	1.344,80	CSTL4520	838,30										
24"	610,0	CSTL9024	2.310,10	CSTL4524	1.415,10										



## KAPPEN ASTM A-234 WPB - ASME B 16.9

ABMESSUNGEN		STD		XS	
Ø	Ø AD. mm.	ART-NR	€	ART-NR	€
1/2"	21,3	CCSTXX0M	3,95	CCXSXX0M	4,25
3/4"	26,7	CCSTXX0T	4,25	CCXSXX0T	4,65
1"	33,4	CCSTXX01	4,75	CCXSXX01	5,75
1 1/4"	42,2	CCSTXX1C	4,85	CCXSXX1C	5,80
1 1/2"	48,3	CCSTXX1M	4,90	CCXSXX1M	5,90
2"	60,3	CCSTXX02	5,05	CCXSXX02	6,00
2 1/2"	73,0	CCSTXX2M	5,65	CCXSXX2M	7,05
3"	88,9	CCSTXX03	8,05	CCXSXX03	11,00
3 1/2"	101,6	CCSTXX3M	10,95	CCXSXX3M	14,25
4"	114,3	CCSTXX04	12,55	CCXSXX04	16,45
5"	141,3	CCSTXX05	19,30	CCXSXX05	27,90
6"	168,3	CCSTXX06	33,05	CCXSXX06	42,00
8"	219,1	CCSTXX08	60,85	CCXSXX08	69,00
10"	273,0	CCSTXX10	108,60	CCXSXX10	123,30
12"	323,8	CCSTXX12	144,65	CCXSXX12	200,35
14"	355,6	CCSTXX14	174,00	CCXSXX14	262,25
16"	406,4	CCSTXX16	213,95	CCXSXX16	384,55
18"	457,0	CCSTXX18	338,40	CCXSXX18	541,40
20"	508,0	CCSTXX20	406,10	CCXSXX20	689,10
24"	610,0	CCSTXX24	584,50	CCXSXX24	879,80



## T-STÜCKE ASTM A-234 WPB ASME B 16.9

STD		XS	
ART-NR	€	ART-NR	€
CTXXXX21	4,85	CTXSXX0M	6,10
CTXXXX27	5,25	CTXSXX0T	6,60
CTXXXX33	7,70	CTXSXX01	9,55
CTXXXX42	8,90	CTXSXX1C	11,40
CTXXXX48	11,25	CTXSXX1M	12,15
CTXXXX60	17,00	CTXSXX02	23,25
CTXXXX76	26,25	CTXSXX2M	27,85
CTXXXX89	38,60	CTXSXX03	42,05
CTXXX101	53,00	CTXSXX3M	59,30
CTXXX114	66,45	CTXSXX04	80,20
CTXXX140	107,00	CTXSXX05	126,25
CTXXX168	148,70	CTXSXX06	215,35
CTXXX219	275,00	CTXSXX08	370,00
CTXXX273	505,60	CTXSXX10	677,95
CTXXX324	715,00	CTXSXX12	1.024,10
CTXXX355	1.234,40	CTXSXX14	1.261,25
CTXXX406	1.391,40	CTXSXX16	2.018,00
CTXXX457	2.313,40		
CTXXX508	3.010,95		
CTXXX610	3.791,50		



# REDUZIERTE T-STÜCKE UND REDUZIERUNGEN KONZENTRISCH UND EXZENTRISCH ASTM A-234 WPB - ASME B 16.9



ABMESSUNGEN		RED. T-STÜCK		KONZENTRISCHE RED.				EXZENTRISCHE RED.	
		STD		STD		XS		STD	
Ø	Ø AD. mm.	ART-NR	€	ART-NR	€	ART-NR	€	ART-NR	€
3/4" x 1/2"	26,7 x 21,3	CTST0T0M	3,70	CRST0T0M	2,90	CRXS0T0M	3,90	CREX0T0M	3,10
1" x 1/2"	33,4 x 21,3	CTST010M	6,10	CRST010M	3,20	CRXS010M	5,40	CREX010M	4,05
1" x 3/4"	33,4 x 26,7	CTST010T	5,20	CRST010T	3,10	CRXS010T	4,90	CREX010T	3,95
1 1/4" x 1/2"	42,2 x 21,3	CTST1C0M	8,10	CRST1C0M	3,60	CRXS1C0M	5,65	CREX1C0M	11,65
1 1/4" x 3/4"	42,2 x 26,7	CTST1C0T	7,80	CRST1C0T	3,35	CRXS1C0T	5,10	CREX1C0T	6,55
1 1/4" x 1"	42,2 x 33,4	CTST1C01	7,65	CRST1C01	3,15	CRXS1C01	4,65	CREX1C01	4,05
1 1/2" x 1/2"	48,3 x 21,3	CTST1M0M	11,85	CRST1M0M	4,25	CRXS1M0M	5,45	CREX1M0M	13,70
1 1/2" x 3/4"	48,3 x 26,7	CTST1M0T	11,55	CRST1M0T	3,90	CRXS1M0T	4,85	CREX1M0T	13,55
1 1/2" x 1"	48,3 x 33,4	CTST1M01	11,10	CRST1M01	3,60	CRXS1M01	4,60	CREX1M01	4,50
1 1/2" x 1 1/4"	48,3 x 42,2	CTST1M1C	10,80	CRST1M1C	3,45	CRXS1M1C	4,30	CREX1M1C	3,50
2" x 1/2"	60,3 x 21,3			CRST020M	10,85				
2" x 3/4"	60,3 x 26,7			CRST020T	5,45			CREX020T	13,15
2" x 1"	60,3 x 33,4	CTST0201	21,85	CRST0201	4,90	CRXS0201	6,50	CREX0201	7,55
2" x 1 1/4"	60,3 x 42,2	CTST021C	20,95	CRST021C	4,50	CRXS021C	6,20	CREX021C	5,65
2" x 1 1/2"	60,3 x 48,3	CTST021M	20,45	CRST021M	4,30	CRXS021M	5,75	CREX021M	5,40
2 1/2" x 1"	73,0 x 33,4	CTST2M01	26,05	CRST2M01	9,20			CREX2M01	29,55
2 1/2" x 1 1/4"	73,0 x 42,2	CTST2M1C	25,65	CRST2M1C	8,10	CRXS2M1C	11,55	CREX2M1C	21,75
2 1/2" x 1 1/2"	73,0 x 48,3	CTST2M1M	25,45	CRST2M1M	7,65	CRXS2M1M	10,70	CREX2M1M	9,45
2 1/2" x 2"	73,0 x 60,3	CTST2M02	25,35	CRST2M02	7,05	CRXS2M02	9,95	CREX2M02	8,55
3" x 1"	88,9 x 33,4	CTST0301	39,25	CRST0301	17,50				
3" x 1 1/4"	88,9 x 42,2	CTST031C	38,45	CRST031C	10,60	CRXS031C	14,25	CREX031C	24,10
3" x 1 1/2"	88,9 x 48,3	CTST031M	38,20	CRST031M	9,85	CRXS031M	13,80	CREX031M	16,60
3" x 2"	88,9 x 60,3	CTST0302	37,85	CRST0302	9,15	CRXS0302	12,40	CREX0302	11,55
3" x 2 1/2"	88,9 x 73,0	CTST032M	37,70	CRST032M	8,55	CRXS032M	12,10	CREX032M	10,70
4" x 1 1/4"	114,3 x 42,2			CRST041C	21,35				
4" x 1 1/2"	114,3 x 48,3	CTST041M	70,95	CRST041M	18,45	CRXS041M	27,50	CREX041M	25,90
4" x 2"	114,3 x 60,3	CTST0402	67,85	CRST0402	17,15	CRXS0402	24,50	CREX0402	21,35
4" x 2 1/2"	114,3 x 73,0	CTST042M	66,15	CRST042M	15,30	CRXS042M	21,90	CREX042M	19,25
4" x 3"	114,3 x 88,9	CTST0403	63,55	CRST0403	14,15	CRXS0403	21,05	CREX0403	17,15
5" x 2"	141,3 x 60,3	CTST0502	116,45	CRST0502	30,65			CREX0502	57,75
5" x 2 1/2"	141,3 x 73,0	CTST052M	115,30	CRST052M	27,85	CRXS052M	39,90	CREX052M	54,50
5" x 3"	141,3 x 88,9	CTST0503	113,55	CRST0503	25,65	CRXS0503	40,75	CREX0503	31,95
5" x 4"	141,3 x 114,3	CTST0504	112,70	CRST0504	23,25	CRXS0504	36,85	CREX0504	29,05
6" x 2"	168,3 x 60,3	CTST0602	163,80	CRST0602	50,05				
6" x 2 1/2"	168,3 x 73,0	CTST062M	160,00	CRST062M	47,05	CRXS062M	62,85	CREX062M	73,85
6" x 3"	168,3 x 88,9	CTST0603	158,85	CRST0603	41,90	CRXS0603	58,40	CREX0603	52,55
6" x 4"	168,3 x 114,3	CTST0604	157,05	CRST0604	37,65	CRXS0604	55,65	CREX0604	47,05
6" x 5"	168,3 x 141,3	CTST0605	153,80	CRST0605	35,55	CRXS0605	53,05	CREX0605	45,30
8" x 3"	219,1 x 88,9	CTST0803	291,60	CRST0803	67,60				
8" x 4"	219,1 x 114,3	CTST0804	288,40	CRST0804	60,05	CRXS0804	100,10	CREX0804	79,05
8" x 5"	219,1 x 141,3	CTST0805	286,30	CRST0805	57,45	CRXS0805	94,25	CREX0805	71,80
8" x 6"	219,1 x 168,3	CTST0806	284,35	CRST0806	57,20	CRXS0806	88,15	CREX0806	69,35
10" x 4"	273,0 x 114,3	CTST1004	517,55	CRST1004	135,35			CREX1004	280,75
10" x 5"	273,0 x 141,3	CTST1005	516,25	CRST1005	117,65	CRXS1005	178,40	CREX1005	226,15
10" x 6"	273,0 x 168,3	CTST1006	511,25	CRST1006	108,75	CRXS1006	145,95	CREX1006	203,05
10" x 8"	273,0 x 219,1	CTST1008	507,95	CRST1008	102,00	CRXS1008	140,20	CREX1008	127,40
12" x 6"	323,8 x 168,3	CTST1206	846,00	CRST1206	184,60	CRXS1206	240,35	CREX1206	353,80
12" x 8"	323,8 x 219,1	CTST1208	757,55	CRST1208	156,65	CRXS1208	223,85	CREX1208	195,65
12" x 10"	323,8 x 273,0	CTST1210	753,50	CRST1210	138,80	CRXS1210	216,15	CREX1210	171,05
14" x 8"	355,6 x 219,1			CRST1408	324,90			CREX1408	622,95
14" x 10"	355,6 x 273,0	CTST1410	1.461,25	CRST1410	270,70	CRXS1410	457,85	CREX1410	381,45
14" x 12"	355,6 x 323,8	CTST1412	1.453,55	CRST1412	250,15	CRXS1412	414,45	CREX1412	338,40
16" x 8"	406,4 x 219,1			CRST1608	393,75			CREX1608	907,50
16" x 10"	406,4 x 273,0	CTST1610	1.994,95	CRST1610	365,20	CRXS1610	573,05	CREX1610	535,25
16" x 12"	406,4 x 323,8	CTST1612	1.987,25	CRST1612	347,35	CRXS1612	554,00	CREX1612	479,90
16" x 14"	406,4 x 355,6	CTST1614	1.975,00	CRST1614	338,40	CRXS1614	548,20	CREX1614	436,90
18" x 16"	457,0 x 406,4	CTST1816	2.573,30	CRST1816	765,95				
20" x 16"	508,0 x 406,4	CTST2016	3.363,90	CRST2016	1.322,80				
20" x 18"	508,0 x 457,0	CTST2018	3.330,05	CRST2018	1.228,35				
24" x 18"	610,0 x 457,0	CTST2418	4.606,65	CRST2418	1.535,00				
24" x 20"	610,0 x 508,0	CTST2420	4.592,80	CRST2420	1.376,60				

## C-STAHL FLANSCHEN



### GLATTE FLANSCH GEM. NORM EN 1092-1 01

ABMESSUNGEN			GLATTE FLANSCH GEM. NORM EN 1092-1 01						
			PN 6		PN 10				
DN	"	mm.	ART-NR	€	ART-NR	€	ART-NR	€	
15	1/2"	21,3	FC010015	2,55			FC014015	4,20	
20	3/4"	26,9	FC010020	3,85			FC014020	5,65	
25	1"	33,7	FC010025	4,60			FC014025	6,75	
32	1 1/4"	42,4	FC010032	7,35			FC014032	9,30	
40	1 1/2"	48,3	FC010040	8,45			FC014040	10,65	
50	2"	60,3	FC010050	8,60			FC016050	13,15	
65	2 1/2"	76,1					F2576065	16,55	
	2 1/2"	76,1	FC010065	10,50			FC016065	16,55	
80	3"	88,9	FC010080	17,25	F2576080	20,85	FC016080	20,95	
90	3 1/2"	101,6			F2576101	31,15			
100	4"	108,0			F2576108	23,10			
	4"	114,3	FC010100	20,15			FC016100	22,20	
125	5"	133,0			F2576133	33,55			
	5"	139,7	FC010125	26,75			FC016125	28,95	
150	6"	159,0			F2576159	34,80			
	6"	168,3	FC010150	30,30			FC016150	36,75	
175	7"	193,7			F2576175	51,90			
200	8"	219,1	FC010200	39,95			FC011200	51,90	
250	10"	273,0	FC010250	57,90			FC011250	63,00	
300	12"	323,9	FC010300	75,90			FC011300	73,05	
350	14"	355,6	FC010350	97,40			FC011350	117,70	
400	16"	406,4	FC010400	115,00			FC011400	159,45	
450	18"	457,0	FC010450	133,80			FC011450	214,45	
500	20"	508,0	FC010500	153,75			FC011500	234,80	
600	24"	610,0					FC011600	314,00	
	24"	610,0					F2576600	281,20	
700	28"	711,0					F2576700	356,75	
800	32"	813,0					F2576800	497,70	
900	36"	914,0					F2576900	598,75	
1000	40"	1.016,0					F2576999	738,30	

nicht genormte Flanschen
  4-Loch
  gem. DIN 2576
  gem. DIN 2502

**GLATTE FLANSCH GEM. NORM EN 1092-1 01**

PN 16		PN 25		PN 40			
ART-NR	€	ART-NR	€	ART-NR DIN	€	ART-NR DIN	€
		FC014015	4,20	FC014015	4,20	FC014015	4,20
		FC014020	5,65	FC014020	5,65	FC014020	5,65
		FC014025	6,75	FC014025	6,75	FC014025	6,75
		FC014032	9,30	FC014032	9,30	FC014032	9,30
		FC014040	10,65	FC014040	10,65	FC014040	10,65
		FC016050	13,15	FC016050	13,15	FC016050	13,15
		F2576065	16,55				
		FC016065	16,55	FC014065	18,75	FC014065	18,75
		FC016080	20,95	FC014080	25,35	FC014080	25,35
		FC016100	22,20	FC014100	33,60	FC014100	33,60
		FC016125	28,95	FC014125	45,85	FC014125	45,85
		FC016150	36,75	FC014150	58,85	FC014150	58,85
F2502200	54,50	FC016200	75,70	FC012200	79,20	FC014200	98,95
F2502250	70,90	FC016250	110,50	FC012250	112,95	FC014250	156,95
F2502300	92,00	FC016300	147,90	FC012300	160,55	FC014300	214,85
F2502350	163,35	FC016350	232,05	FC012350	280,70	FC014350	389,40
F2502400	176,60	FC016400	295,50	FC012400	300,45	FC014400	463,10
F2502450	305,30	FC016450	379,45				
F2502500	308,50	FC016500	470,15	FC012500	485,15	FC014500	542,45
		F2502600	401,00				
		F2502700	458,90				
		F2502800	576,70				
		F2502900	726,85				
		F2502999	1.046,65				


**BLINDFLANSCH GEM. NORM EN 1092-1 05**

ABMESSUNGEN			BLINDFLANSCH GEM. NORM EN 1092-1 05			
			PN 6		PN 10	
DN	"	mm.	ART-NR	€	ART-NR	€
15	1/2"	21,3	FC050015	4,40	FC054015	4,55
20	3/4"	26,9	FC050020	5,95	FC054020	6,10
25	1"	33,7	FC050025	7,35	FC054025	7,45
32	1 1/4"	42,4	FC050032	10,05	FC054032	10,25
40	1 1/2"	48,3	FC050040	11,75	FC054040	12,00
50	2"	60,3	FC050050	16,10	FC056050	16,25
65	2 1/2"	76,1			F2527065	20,55
	2 1/2"	76,1	FC050065	20,35	FC056065	20,55
80	3"	88,9	FC050080	26,60	FC056080	26,85
100	4"	114,3	FC050100	31,40	FC056100	31,70
125	5"	139,7	FC050125	47,05	FC056125	47,20
150	6"	168,3	FC050150	57,40	FC056150	58,35
200	8"	219,1	FC050200	91,10	FC051200	91,20
250	10"	273,0	FC050250	134,55	FC051250	141,80
300	12"	323,9	FC050300	173,20	FC051300	199,85
350	14"	355,6			FC051350	273,65
400	16"	406,4			FC051400	297,60
450	18"	457,0			FC051450	480,85
500	20"	508,0			FC051500	487,25
600	24"	610,0			FC051600	626,50
	24"	610,0			F5271600	592,10
700	28"	711,0			F5271700	839,60
800	32"	813,0			F5271800	1.230,55
900	36"	914,0			F5271900	1.859,15
1000	40"	1.016,0			F5271999	2.390,90

nicht genormte Flanschen
  4-Loch
  gem. DIN 2527

## BLINDFLANSCH GEM. NORM EN 1092-1 05

PN 16		PN 25		PN 40			
ART-NR	€	ART-NR	€	ART-NR DIN	€	ART-NR	€
FC054015	4,55	FC054015	4,55			FC054015	4,55
FC054020	6,10	FC054020	6,10			FC054020	6,10
FC054025	7,45	FC054025	7,45			FC054025	7,45
FC054032	10,25	FC054032	10,25			FC054032	10,25
FC054040	12,00	FC054040	12,00			FC054040	12,00
FC056050	16,25	FC054050	17,80			FC054050	17,80
F2527065	20,55						
FC056065	20,55	FC054065	23,85			FC054065	23,85
FC056080	26,85	FC054080	32,90			FC054080	32,90
FC056100	31,70	FC054100	42,10			FC054100	42,10
FC056125	47,20	FC054125	60,40			FC054125	60,40
FC056150	58,35	FC054150	80,80			FC054150	80,80
FC056200	92,00	FC052200	131,90			FC054200	162,95
FC056250	142,25	FC052250	198,15			FC054250	265,80
FC056300	200,50	FC052300	273,55			FC054300	379,80
FC056350	305,60	FC052350	402,00	F5274350	529,15	FC054350	539,70
FC056400	382,55	FC052400	540,30	F5274400	765,10	FC054400	783,95
FC056450	567,60						
FC056500	614,40	FC052500	831,35	F5274500	1.036,20	FC054500	1.072,85
FC056600	969,95						
F2527600	909,65						
F2527700	1.072,40						
F2527800	1.470,05						
F2527900	2.099,55						
F2527999	2.817,60						


**V-FLANSCHEN GEM. NORM EN 1092-1 11**

ABMESSUNGEN			V-FLANSCHEN GEM. NORM EN 1092-1 05					
			PN 6		PN 10			
DN	"	mm.	ART-NR	€	ART-NR	€	ART-NR	€
15	1/2"	21,3	F2631015	4,20	F2633015	8,30	FC114015	9,15
20	3/4"	26,9	F2631020	6,35	F2633020	10,10	FC114020	12,05
25	1"	33,7	F2631025	8,00	F2633025	11,55	FC114025	14,30
32	1 1/4"	42,4	F2631032	11,60	F2633032	17,00	FC114032	17,55
40	1 1/2"	48,3	F2631040	12,60	F2633040	18,75	FC114040	21,65
50	2"	60,3	F2631050	14,25	F2633050	25,50	FC116050	22,30
65	2 1/2"	76,1	F2631065	16,00	F2633065	27,95	FC116065	24,40
80	3"	88,9	F2631080	26,05	F2633080	33,60	FC116080	29,45
90	3 1/2"	108,0			F2633108	48,85		
100	4"	114,3	F2631100	31,15	F2633100	42,10	FC116100	36,80
125	5"	133,0			F2633133	66,55		
125	5"	139,7	F2631125	43,10	F2633125	66,55	FC116125	58,20
150	6"	159,0			F2633159	81,90		
150	6"	168,3	F2631150	54,80	F2633150	70,70	FC116150	61,75
200	8"	219,1	F2631200	98,65	F2632200	103,00	FC111200	85,95
250	10"	273,0	F2631250	136,95	F2632250	148,30	FC111250	129,60
300	12"	323,9	F2631300	148,95	F2632300	175,50	FC111300	153,40
350	14"	355,6	F2631350	196,80	F2632350	250,85	FC111350	219,25
400	16"	406,4	F2631400	225,45	F2632400	288,40	FC111400	252,05
450	18"	457,0			F2632450	489,55		
500	20"	508,0	F2631500	362,60	F2632500	441,65	FC111500	426,45
600	24"	609,0						
700	28"	711,0						
800	32"	813,0						
900	36"	914,0						
1000	40"	1.016,0						
			WERKSTOFF P250GH		WERKSTOFF P250GH		WERKSTOFF P245GH	

 Nicht genormte Flanschen

 4-Loch

 gem. DIN 2633

 gem. DIN 2635

V-FLANSCHEN GEM. NORM EN 1092-1 05

V-FLANSCHEN GEM. NORM EN 1092-1 05											
PN 16				PN 25				PN 40			
ART-NR	€	ART-NR	€	ART-NR	€	ART-NR	€	ART-NR	€	ART-NR	€
F2633015	8,30	FC114015	9,15	F2635015	9,50	FC114015	9,15	F2635015	9,50	FC114015	9,15
F2633020	10,10	FC114020	12,05	F2635020	12,85	FC114020	12,05	F2635020	12,85	FC114020	12,05
F2633025	11,55	FC114025	14,30	F2635025	16,40	FC114025	14,30	F2635025	16,40	FC114025	14,30
F2633032	17,00	FC114032	17,55	F2635032	19,95	FC114032	17,55	F2635032	19,95	FC114032	17,55
F2633040	18,75	FC114040	21,65	F2635040	24,80	FC114040	21,65	F2635040	24,80	FC114040	21,65
F2633050	25,50	FC116050	22,30	F2635050	28,40	FC114050	25,45	F2635050	28,40	FC114050	25,45
F2633065	27,95	FC116065	24,40	F2635065	34,05	FC114065	30,60	F2635065	34,05	FC114065	30,60
F2633080	33,60	FC116080	29,45	F2635080	43,25	FC114080	40,85	F2635080	43,25	FC114080	40,85
F2633108	48,85										
F2633100	42,10	FC116100	36,80	F2635100	59,40	FC114100	51,35	F2635100	59,40	FC114100	51,35
F2633133	66,55										
F2633125	66,55	FC116125	58,20	F2635125	82,55	FC114125	80,05	F2635125	82,55	FC114125	80,05
F2633159	81,90										
F2633150	70,70	FC116150	61,75	F2635150	107,45	FC114150	93,80	F2635150	107,45	FC114150	93,80
F2633200	105,55	FC116200	87,60	F2634200	180,75			F2635200	195,95	FC114200	178,55
F2633250	157,30	FC116250	137,45	F2634250	259,35			F2635250	351,95	FC114250	291,70
F2633300	221,85	FC116300	193,80	F2634300	331,70			F2635300	501,10	FC114300	475,10
F2633350	314,60	FC116350	274,95	F2634350	501,95			F2635350	796,60		
F2633400	396,30	FC116400	346,25	F2634400	656,10			F2635400	973,00		
F2633450	591,95			F2634450	820,60			F2635450	1.017,70		
F2633500	773,30			F2634500	1.135,80			F2635500	1.179,80		
F2633600	956,35										
F2633700	976,15										
F2633800	1.280,35										
F2633900	1.546,60										
F2633999	2.053,70										
WERKSTOFF P250GH		WERKSTOFF P245GH		WERKSTOFF P250GH		WERKSTOFF P245GH		WERKSTOFF P250GH		WERKSTOFF P245GH	

ABMESSUNGEN			FLANSCH DIN 2642		GEWINDE-FLANSCH DIN 2573		GEWINDE-FLANSCH DIN 2576	
			PN 10 VERZINKT		PN 6 VERZINKT		PN 10/16 VERZINKT	
DN	"	mm.	ART-NR	€	ART-NR	€	ART-NR	€
15	1/2"	21,3			F573O015	4,45	F576O015	7,85
20	3/4"	26,9			F573O020	6,50	F576O020	11,20
25	1"	33,7	F2642025	7,85	F573O025	8,00	F576O025	13,20
32	1 1/4"	42,4	F2642032	10,50	F573O032	12,80	F576O032	19,20
40	1 1/2"	48,3	F2642040	12,10	F573O040	15,05	F576O040	22,05
50	2"	60,3	F2642050	13,80	F573O050	16,55	F576O050	29,35
65	2 1/2"	76,1	F2642065	16,45	F573O065	20,50	F576O065	32,50
80	3"	88,9	F2642080	20,90	F573O080	32,25	F576O080 PN 10	41,15
80	3"	88,9					F576O086 PN 16	41,15
100	4"	114,3	F2642100	23,10	F573O100	37,45	F576O100	43,65
125	5"	139,7	F2642125	28,60	F573O125	49,85	F576O125	59,05
150	6"	168,3	F2642150	35,25	F573O150	38,95	F576O150	71,15
200	8"	219,1	F2642200	46,95				
200	8"	219,1						
250	10"	273,0	F2642250	64,80				
300	12"	323,9	F2642300	87,95				

Mit 8 Löchern PN 16

ABMESSUNGEN			VERZINKTE FLANSCH FÜR PE-BUNDBUCHSE							
			NORMALE AUSFÜHRUNG PN 10		LEICHTE AUSFÜHRUNG PN 10		NORMALE AUSFÜHRUNG PN 16		LEICHTE AUSFÜHRUNG PN 16	
DN	PE Ø EXT (mm)	PVC Ø EXT (mm)	ART-NR	€	ART-NR	€	ART-NR	€	ART-NR	€
15	20		FPE10015	5,15			FPE10015	5,15		
20	25		FPE10020	7,10			FPE10020	7,10		
25	32		FPE10025	8,30			FPE10025	8,30		
32	40		FPE10032	11,20			FPE10032	11,20		
40	50		FPE10040	14,80	FPR10040	8,55	FPE10040	14,80	FPR10040	8,55
50		50								
50	63	63	FPE10050	15,85	FPR10050	11,70	FPE10050	15,85	FPR10050	11,70
65		63								
65	75	75	FPE10065	20,50	FPR10065	14,45	FPE10065	20,50	FPR10065	14,45
80	90	90	FPE10080	22,35	FPR10080	14,90	FPE10080	22,35	FPR10080	14,90
100	110	110	FPE10100	27,40	FPR10100	20,15	FPE10100	27,40	FPR10100	20,15
100	125		FPE10101	23,70	FPR10101	18,85	FPE10101	23,70	FPR10101	18,85
125	125	125	FPE10125	39,55	FPR10125	28,35	FPE10125	39,55	FPR10125	28,35
125	140	140	FPE10126	33,15	FPR10126	23,95	FPE10126	33,15	FPR10126	23,95
150	160	160	FPE10150	43,40	FPR10150	31,25	FPE10150	43,40	FPR10150	31,25
150	180		FPE10151	39,80	FPR10151	28,75	FPE10151	39,80	FPR10151	28,75
200	200	200	FPE10200	58,25	FPR10200	41,80	FPE16200	59,85	FPR16200	42,35
200	225						FPE16201	54,90	FPR16201	40,65
250	250	250	FPE10250	75,30	FPR10250	64,35	FPE16250	81,45	FPR16250	70,00
300	315	315	FPE10300	89,10	FPR10300	82,15	FPE16300	109,80	FPR16300	93,95
350	355		FPE10350	130,30	FPR10350	121,70	FPE16350	171,80	FPR16350	135,80
400	400		FPE10400	174,10	FPR10400	151,95	FPE16400	192,85	FPR16400	157,50
450	450				FPR10450	165,55			FPR16450	173,85
500	500				FPR10500	176,45			FPR16500	207,35
600	560				FPR10600	253,70				
600	630				FPR10601	221,95				
700	710				FPR10700	269,40				
800	800				FPR10800	398,40				



GEWINDE-FLANSCH DIN 2566					GEWINDE-FLANSCH EN 1092-1 TYP 13						
PN 16 SCHWARZ		PN 16 VERZINKT		PN 6 SCHWARZ		PN 16 SCHWARZ		PN 16 VERZINKT		PN 40 SCHWARZ	
ART-NR	€	ART-NR	€	ART-NR	€	ART-NR	€	ART-NR	€	ART-NR	€
F5660015	6,50	F566G015	7,70	FC130015	3,80	FC134015	7,65			FC134015	7,65
F5660020	9,70	F566G020	11,45	FC130020	5,85	FC134020	10,35			FC134020	10,35
F5660025	12,25	F566G025	13,80	FC130025	7,30	FC134025	12,45			FC134025	12,45
F5660032	17,00	F566G032	20,15	FC130032	10,35	FC134032	18,05			FC134032	18,05
F5660040	19,00	F566G040	22,35	FC130040	12,00	FC134040	20,50			FC134040	20,50
F5660050	25,85	F566G050	30,55	FC130050	13,40	FC136050	23,80	F566G050	30,55		
F5660065	30,55	F566G065	36,75	FC130065	18,30	FC136065	29,65	F566G065	36,75		
F5660080	39,60	F566G080	47,50	FC130080	27,40	FC136080	37,60	F566G080	47,50		
F5660100	42,90	F566G100	51,65			FC136100	43,60	F566G100	51,65		
F5660125	62,90	F566G125	70,85			FC136125	60,45	F566G125	70,85		
F5660150	81,60	F566G150	91,45			FC136150	72,10	F566G150	91,45		

VERZINKTE FLANSCH FÜR PVC-BUNDBUCHSE				
PN 10		PN 16		
ART-NR	€	ART-NR	€	
FPVC0050	11,20	FPVC0050	11,20	
FPR10050	11,70	FPR10050	11,70	
FPVC0063	13,55	FPVC0063	13,55	
FPVC0075	13,55	FPVC0075	13,55	
FPVC0090	15,40	FPVC0090	15,40	
FPVC0110	16,40	FPVC0110	16,40	
FPVC0125	20,10	FPVC0125	20,10	
FPVC0140	20,10	FPVC0140	20,10	
FPVC0160	24,25	FPVC0160	24,25	
FPVC0200	36,85	FPVC6200	36,85	
FPVC0250	44,20	FPVC6250	44,20	
FPVC0315	51,30	FPVC6315	51,30	





## FLANSCHEN GEM. NORM ASTM - ANSI B 16.5 (A105)

ABMESSUNGEN			WELDING NECK 150 Lbs.		WELDING NECK 300 Lbs.		SLIP - ON 150 Lbs.		SLIP - ON 300 Lbs.	
DN	Ø	mm.	ART-NR	€	ART-NR	€	ART-NR	€	ART-NR	€
15	1/2"	21,3	FN150015	6,25	FN300015	9,95	FO150015	4,05	FO300015	7,15
20	3/4"	26,9	FN150020	8,80	FN300020	16,25	FO150020	7,15	FO300020	11,30
25	1"	33,7	FN150025	13,80	FN300025	21,35	FO150025	8,20	FO300025	14,35
32	1 1/4"	42,4	FN150032	17,80	FN300032	27,55	FO150032	10,65	FO300032	18,50
40	1 1/2"	48,3	FN150040	21,40	FN300040	40,15	FO150040	13,65	FO300040	26,70
50	2"	60,3	FN150050	32,05	FN300050	45,25	FO150050	21,35	FO300050	34,95
65	2 1/2"	76,2	FN150065	52,25	FN300065	67,80	FO150065	34,95	FO300065	45,25
80	3"	88,9	FN150080	61,75	FN300080	92,90	FO150080	39,80	FO300080	62,65
100	4"	114,3	FN150100	89,05	FN300100	149,50	FO150100	54,40	FO300100	103,75
125	5"	139,7	FN150125	109,25	FN300125	200,95	FO150125	61,20	FO300125	128,45
150	6"	168,3	FN150150	130,65	FN300150	253,70	FO150150	72,90	FO300150	166,45
200	8"	219,1	FN150200	217,30	FN300200	389,35	FO150200	122,40	FO300200	254,80
250	10"	273,0	FN150250	296,90	FN300250	556,40	FO150250	179,75	FO300250	381,20
300	12"	323,9	FN150300	463,10	FN300300	803,75	FO150300	272,00	FO300300	513,65
350	14"	355,6	FN150350	640,50	FN300350	1.105,25	FO150350	369,90	FO300350	719,35
400	16"	406,4	FN150400	802,60	FN300400	1.419,30	FO150400	472,60	FO300400	996,80
450	18"	457,0	FN150450	940,80	FN300450	1.682,95	FO150450	513,85	FO300450	1.263,95
500	20"	508,0	FN150500	1.174,30	FN300500	2.147,75	FO150500	657,70	FO300500	1.366,75
600	24"	610,0	FN150600	1.507,20	FN300600	2.888,80	FO150600	953,85	FO300600	2.065,60

ABMESSUNGEN			BLIND 150 Lbs.		BLIND 300 Lbs.		SOCKET WELDING 150 Lbs.		WELDING NECK XS 150 Lbs.	
DN	Ø	mm.	ART-NR	€	ART-NR	€	COD	€	ART-NR	€
15	1/2"	21,3	FB150015	3,35	FB300015	5,85	FW150015	5,00	FNX15015	6,80
20	3/4"	26,9	FB150020	5,85	FB300020	10,05	FW150020	8,80	FNX15020	9,70
25	1"	33,7	FB150025	7,50	FB300025	12,60	FW150025	11,30	FNX15025	15,35
32	1 1/4"	42,4	FB150032	10,90	FB300032	16,70	FW150032	15,05	FNX15032	18,30
40	1 1/2"	48,3	FB150040	13,35	FB300040	24,25	FW150040	18,75	FNX15040	22,00
50	2"	60,3	FB150050	20,55	FB300050	28,50	FW150050	28,90	FNX15050	33,00
65	2 1/2"	76,2	FB150065	32,40	FB300065	42,70			FNX15065	53,25
80	3"	88,9	FB150080	39,50	FB300080	58,65			FNX15080	63,45
100	4"	114,3	FB150100	56,25	FB300100	98,75			FNX15100	89,80
125	5"	139,7	FB150125	71,25	FB300125	129,80			FNX15125	109,65
150	6"	168,3	FB150150	93,40	FB300150	180,85			FNX15150	132,35
200	8"	219,1	FB150200	166,30	FB300200	294,70			FNX15200	218,70
250	10"	273,0	FB150250	237,50	FB300250	477,20				
300	12"	323,9	FB150300	356,20	FB300300	686,55				
350	14"	355,6	FB150350	493,95	FB300350	887,60				
400	16"	406,4	FB150400	661,45	FB300400	1.172,25				
450	18"	457,0	FB150450	812,25	FB300450	1.490,45				
500	20"	508,0	FB150500	1.038,35	FB300500	1.867,25				
600	24"	610,0	FB150600	1.285,65	FB300600	2.838,55				

## GUMMI FLANSCHDICHTUNG



TYP 1

TYP 2

Gem. Norm EN 1514-1 (Typ 1) und DIN 2690 (Typ 2).

Dicke 3 mm.

Behält ihre Eigenschaften:

SBR: zwischen -10° C und 100° C.

NBR: zwischen -10° C und 80° C.

■ PN 10 ■ PN 10/16 ■ PN 16

DN	TYP 1		TYP 1 SBR		TYP 1 NBR		TYP 2 SBR	
	LÖCHER		ART-NR	€	ART-NR	€	ART-NR	€
25	4	10	JBG10025	0,52	JBG1N025	0,78	JBG20025	0,28
32	4	10	JBG10032	0,62	JBG1N032	1,00	JBG20032	0,34
40	4	10	JBG10040	0,77	JBG1N040	1,20	JBG20040	0,36
50	4	10	JBG10050	0,89	JBG1N050	1,50	JBG20050	0,48
65	8	10	JBG10065	1,10	JBG1N065	1,60	JBG20065	0,60
80	8	10	JBG10080	1,20	JBG1N080	1,85	JBG20080	0,67
80		10					JBG20086	0,67
100	8	10	JBG10100	1,30	JBG1N100	2,15	JBG20100	0,73
125	8	10	JBG10125	1,60	JBG1N125	2,40	JBG20125	1,00
150	8	10	JBG10150	2,05	JBG1N150	3,35	JBG20150	1,15
175	8	10	JBG10175	2,45			JBG20175	1,30
200	8	10	JBG10200	2,65	JBG1N200	4,25	JBG20200	1,50
200	12	10	JBG10216	2,65			JBG20206	1,50
250	12	10	JBG10250	3,55			JBG20250	2,00
250	12	10	JBG10256	3,55			JBG20256	2,00
300	12	10	JBG10300	4,55			JBG20300	2,95
300	12	10	JBG10306	4,55			JBG20306	2,95
350	16	5	JBG10350	6,00			JBG20350	4,70
350	16	5	JBG10356	6,00			JBG20356	4,70
400	16	5	JBG10400	7,05			JBG20400	5,10
400	16	5	JBG10406	7,05			JBG20406	5,10
450	20	5	JBG10450	8,40			JBG20450	6,10
450	20	5	JBG10456	8,40			JBG20456	6,10
500	20	5	JBG10500	12,40			JBG20500	7,35
500	20	5	JBG10506	12,40			JBG20506	7,35

## FLANSCHDICHTUNG PRESSPAPPE



Hergestellt aus organischen und mineralischen Fasern.

Ohne Asbest.

Dicke 1,5 mm.

Max. Betriebstemperatur 150° C.

Max. Betriebsdruck 35 kg/ cm<sup>2</sup>.

Anwendungen: Wasser, Luft, Öle und Fette, Lösungsmittel.

DICHTUNGEN FÜR FLANSCHEN OHNE BOHRUNGEN DIN 2690					
DN	Ø AD.	Ø INT.		ART-NR	€
15	50	20	25	JBKSA015	0,24
20	60	25	25	JBKSA020	0,24
25	70	30	25	JBKSA025	0,30
32	82	40	25	JBKSA032	0,33
40	92	50	25	JBKSA040	0,44
50	107	60	25	JBKSA050	0,50
65	127	77	25	JBKSA065	0,69
80	142	90	25	JBKSA080	0,78
100	162	114	25	JBKSA100	1,00
125	192	140	25	JBKSA125	1,25
150	218	168	25	JBKSA150	1,70
200	273	220	25	JBKSA200	2,35
250	328	273	10	JBKSA250	3,40
300	378	325	10	JBKSA300	4,75
350	438	368	10	JBKSA350	7,30
400	490	420	5	JBKSA400	8,75
500	595	520	5	JBKSA500	13,95
600	680	620	1	JBKSA600	27,00

## SYNTHETISCHE FLANSCHDICHTUNG



Das exclusive Design ermöglicht eine exakte Zentrierung der unterschiedlichen Flanscharten.

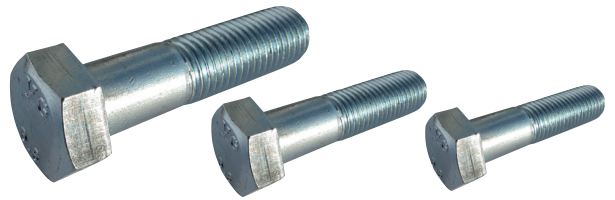
Hergestellt aus Polyethylen.

Max. Betriebstemperatur 60° C.

Max. Betriebsdruck 16 kg/ cm<sup>2</sup>.

Resistent gegen verünnnte Säuren, Alkalien, Salzlösungen, Wasser, Alkohol, Ester, Öle Wasserundurchlässig, Fäulnisbeständig, schützt gegen Rostbildung.

DN	Ø	ART-NR	€
40	1 1/2"	JBP00040	2,20
50	2"	JBP00050	2,25
65	2 1/2"	JBP00065	2,45
80	3"	JBP00080	2,85
100	4"	JBP00100	3,00
125	5"	JBP00125	3,30
150	6"	JBP00150	3,50
200	8"	JBP00200	5,35
250	10"	JBP00250	12,10
300	12"	JBP00300	19,00
400	16"	JBP00400	30,40
500	20"	JBP00500	54,35




## SECHSKANTSCHRAUBEN DIN 931 - 6.8 - verzinkt

ABMESSUNG	LÄNGE		ART-NR	€ 100 STÜCKE
M8	60	100	T0310860	22,40
M10	50	100	T0311050	33,60
M10	60	100	T0311060	37,80
M10	70	100	T0311070	43,40
M10	80	100	T0311080	49,00
M10	90	100	T0311090	53,20
M10	100	100	T0311010	58,80
M10	120	100	T0311012	70,00
M12	40	100	T0311240	40,60
M12	50	100	T0311250	47,60
M12	55	100	T0311255	51,80
M12	60	100	T0311260	54,60
M12	70	100	T0311270	61,60
M12	80	100	T0311280	68,60
M12	90	100	T0311290	75,60
M12	100	100	T0311210	82,60
M12	110	50	T0311211	89,60
M12	120	50	T0311212	95,20
M12	140	50	T0311214	109,20
M14	50	100	T0311450	67,20
M14	55	100	T0311455	72,80
M14	60	50	T0311460	77,00
M14	70	50	T0311470	86,80
M14	80	50	T0311480	95,20
M14	90	50	T0311490	103,60
M14	100	50	T0311410	113,40
M14	120	50	T0311412	134,40
M14	130	50	T0311413	140,00
M14	140	50	T0311414	154,00
M16	35	100	T0311635	70,00
M16	40	50	T0311640	77,00
M16	50	50	T0311650	88,20
M16	55	50	T0311655	93,80
M16	60	50	T0311660	100,80
M16	65	50	T0311665	107,80
M16	70	25	T0311670	113,40
M16	75	25	T0311675	120,40
M16	80	25	T0311680	127,40
M16	90	25	T0311690	140,00
M16	100	25	T0311610	154,00
M16	110	25	T0311611	168,00
M16	120	25	T0311612	175,00
M16	130	25	T0311613	189,00
M16	140	25	T0311614	203,00
M16	150	25	T0311615	217,00
M16	160	25	T0311616	238,00
M16	180	25	T0311618	266,00
M16	200	25	T0311620	308,00

ABMESSUNG	LÄNGE		ART-NR	€ 100 STÜCKE
M18	50	50	T0311850	109,20
M18	60	50	T0311860	131,60
M18	70	50	T0311870	147,00
M18	80	50	T0311880	161,00
M18	90	25	T0311890	182,00
M18	100	25	T0311810	196,00
M18	110	25	T0311811	210,00
M18	120	25	T0311812	231,00
M18	130	25	T0311813	245,00
M18	140	25	T0311814	259,00
M18	150	25	T0311815	273,00
M18	160	25	T0311816	301,00
M18	180	25	T0311818	336,00
M18	200	25	T0311820	399,00
M20	50	25	T0312050	131,60
M20	60	25	T0312060	161,00
M20	70	25	T0312070	189,00
M20	80	25	T0312080	210,00
M20	90	25	T0312090	252,00
M20	100	25	T0312010	273,00
M20	110	25	T0312011	294,00
M20	120	25	T0312012	315,00
M20	130	25	T0312013	336,00
M20	140	25	T0312014	336,00
M20	150	25	T0312015	343,00
M20	160	25	T0312016	378,00
M20	180	20	T0312018	420,00
M20	200	20	T0312020	462,00
M22	70	25	T0312270	245,00
M22	80	25	T0312280	273,00
M22	90	25	T0312290	301,00
M22	100	20	T0312210	329,00
M22	110	10	T0312211	350,00
M24	100	10	T0312410	413,00
M24	110	10	T0312411	448,00
M24	120	10	T0312412	483,00
M24	130	10	T0312413	504,00
M24	140	10	T0312414	532,00
M24	150	10	T0312415	574,00
M24	160	10	T0312416	616,00
M24	180	10	T0312418	679,00
M24	200	10	T0312420	742,00
M27	120	10	T0312712	672,00
M30	130	10	T0313013	896,00
M33	140	5	T0313314	1.253,00


## SECHSKANTMUTTER DIN 934 - 8 verzinkt



ABMESSUNG		ART-NR	€ 100 STÜCKE
M4	250	T9340004	1,15
M5	250	T9340005	1,15
M6	150	T9340006	1,15
M8	125	T9340008	3,45
M10	100	T9340010	5,75
M12	100	T9340012	10,35
M14	50	T9340014	12,65
M16	50	T9340016	17,25
M18	25	T9340018	26,45
M20	25	T9340020	31,05
M22	20	T9340022	43,70
M24	10	T9340024	60,95
M27	10	T9340027	98,90
M30	10	T9340030	132,25
M33	5	T9340033	178,25


## UNTERLEGSCHLEIBE DIN 125 - verzinkt



ABMESSUNG		ART-NR	€ 100 STÜCKE
M4	300	T1250004	1,60
M5	300	T1250005	1,60
M6	150	T1250006	1,60
M8	125	T1250008	1,60
M10	100	T1250010	4,80
M12	100	T1250012	6,40
M14	70	T1250014	9,60
M16	70	T1250016	11,20
M18	50	T1250018	16,00
M20	50	T1250020	17,60
M22	50	T1250022	19,20
M24	50	T1250024	35,20
M27	50	T1250027	46,40
M30	50	T1250030	57,60
M33	30	T1250033	81,60




## GEWINDESTANGE 1.000 mm DIN 975 - 4.8 - verzinkt

ABMESSUNG		ART-NR	€ 100 STÜCKE
M4	100	T9750004	59,80
M5	100	T9750005	60,95
M6	50	T9750006	72,45
M8	25	T9750008	126,50
M10	25	T9750010	201,25
M12	20	T9750012	276,00
M14	15	T9750014	402,50
M16	10	T9750016	523,25
M18	5	T9750018	644,00
M20	5	T9750020	816,50
M22	5	T9750022	1.017,75
M24	5	T9750024	1.224,75
M27	4	T9750027	1.713,50
M30	2	T9750030	1.753,75

## BREITE UNTERLEGSCHLEIBE DIN 9021 - verzinkt



ABMESSUNG		ART-NR	€ 100 STÜCKE
M6	100	T9021006	3,20
M8	100	T9021008	8,00
M10	50	T9021010	14,40
M12	40	T9021012	32,00
M14	40	T9021014	46,40
M16	30	T9021016	52,80
M18	30	T9021018	97,60
M20	30	T9021020	107,20



## ROHRNIPPEL NUT-GEWINDE-SCHWEISSENDE STAHL EN 10255 (M/S195T)

Ø	L mm.		TYP	ART-NR	€
1 1/2"	70	50 10	RR-G	BRRG0770	3,90
2"	70	33 3	RR-G	BRRG0870	5,75
2 1/2"	70	12 2	RR-G	BRRG0870	8,35
3"	70	12 2	RR-G	BRRG0A70	10,10
1"	80	100 10	RR-G	BRRG0580	2,65
1 1/4"	80	60 10	RR-G	BRRG0680	3,50
1 1/2"	80	50 10	RR-G	BRRG0780	4,00
2"	80	30 3	RR-G	BRRG0880	5,55
2 1/2"	80	12 2	RR-G	BRRG0B80	8,60
3"	80	12 2	RR-G	BRRG0A80	10,20
3"	110	9 1	RR-G	BRRGA110	12,80
4"	150	4 1	RR-G	BRRGC150	21,60
2"	100	24 3	RS-N	BRSN8100	7,00
2 1/2"	100	12 2	RS-N	BRSNB100	10,30
3"	100	10 1	RS-N	BRSNA100	12,50
4"	100	4 1	RS-N	BRSNC100	15,80

RR-G = NUT GEWINDE VERZINKT  
RS-N = NUT ANSCHWEISSENDE SCHWARZ

## ANSCHWEISSNIPPEL EINS. GEWINDE KONISCH ISO 7/1 (EN 10226-1) DIN 2982 (EN 10241) STAHL SCHWARZ ST 37,2

Ø	LÄNGE		ART-NR	€
1/4"	40	500 20	B6000140	1,25
3/8"	40	450 10	B6000240	0,85
3/8"	100	230 10	B6002100	1,20
3/8"	150	120 10	B6002150	1,35
3/8"	200	80 10	B6002200	1,80
3/8"	250	60 10	B6002250	2,35
3/8"	300	80 10	B6002300	2,45
1/2"	40	370 10	B6000340	1,00
1/2"	100	140 10	B6003100	1,05
1/2"	150	100 10	B6003150	1,30
1/2"	200	70 10	B6003200	1,75
1/2"	250	70 10	B6003250	2,20
1/2"	300	70 10	B6003300	2,45
3/4"	40	220 10	B6000440	1,10
3/4"	50	220 10	B6000450	1,10
3/4"	100	100 10	B6004100	1,25
3/4"	150	60 10	B6004150	1,60
3/4"	200	50 10	B6004200	2,45
3/4"	250	40 10	B6004250	2,90
3/4"	300	50 10	B6004300	3,25
1"	40	140 10	B6000540	1,40
1"	50	140 10	B6000550	1,40
1"	100	60 10	B6005100	1,70
1"	150	40 10	B6005150	2,30
1"	200	30 10	B6005200	3,10
1"	250	30 10	B6005250	3,75
1"	300	30 10	B6005300	4,35
1 1/4"	50	60 10	B6000650	1,70
1 1/4"	100	40 10	B6006100	2,25
1 1/4"	150	25 5	B6006150	3,10
1 1/4"	200	20 5	B6006200	4,05
1 1/4"	250	15 5	B6006250	5,05
1 1/4"	300	20 5	B6006300	5,60



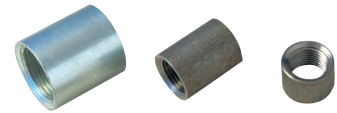
## LANGGEWINDE GEWINDE ISO 7/1 KURZ, ISO 228 LANG VERZINKT STAHL ST 37,2

Ø	LÄNGE		ART-NR	€
3/8"	100	230 10	B5322100	2,60
1/2"	100	140 10	B5323100	2,75
3/4"	120	70 10	B5324120	3,15
1"	140	50 10	B5325140	4,35
1 1/4"	150	25 5	B5326150	5,95
1 1/2"	150	20 5	B5327150	6,95
2"	170	12 4	B5328170	9,70



Ø	LÄNGE		ART-NR	€
1 1/2"	50	40 10	B6000750	1,60
1 1/2"	100	30 5	B6007100	2,80
1 1/2"	150	20 5	B6007150	3,65
1 1/2"	200	15 5	B6007200	4,90
1 1/2"	250	10 5	B6007250	5,80
1 1/2"	300	20 5	B6007300	7,10
2"	60	30 5	B6000860	2,60
2"	100	20 5	B6008100	3,50
2"	150	12 4	B6008150	4,85
2"	200	12 4	B6008200	6,10
2"	250	9 3	B6008250	7,35
2"	300	12 4	B6008300	8,65
2 1/2"	60	18 6	B6000A60	3,75
2 1/2"	100	12 4	B600A100	5,45
2 1/2"	150	6 3	B600A150	7,50
2 1/2"	200	6 3	B600A200	9,60
2 1/2"	250	4 4	B600A250	11,85
2 1/2"	300	8 4	B600A300	13,70
3"	60	12 4	B6000B60	4,70
3"	80	12 4	B6000B80	5,80
3"	100	8 2	B600B100	6,60
3"	150	6 2	B600B150	8,95
3"	200	4 2	B600B200	12,05
3"	250	4 2	B600B250	13,70
3"	300	6 2	B600B300	16,10
4"	80	5 1	B6000C80	7,20
4"	100	4 2	B600C100	9,55
4"	150	3 1	B600C150	13,65
4"	200	6 2	B600C200	15,10
4"	250	4 2	B600C250	18,70
4"	300	3 1	B600C300	22,05

# GANZE UND HALBE STAHLMUFFEN ZYLINDRISCHES GEWINDE ISO 7/1 (EN 10226-1) DIN 2986 (EN 10241) STAHL ST 37,2



HALBE STAHLMUFFE				
Ø	LÄNGE		ART-NR SCHWARZ	€
1/4"	11	800 10	M1400001	0,48
3/8"	12	800 10	M1400002	0,48
1/2"	15	400 10	M1400003	0,57
3/4"	17	300 10	M1400004	0,82
1"	19,5	180 10	M1400005	1,10
1 1/4"	22	120 10	M1400006	1,60
1 1/2"	22	90 10	M1400007	1,90
2"	26	48 8	M1400008	2,70
2 1/2"	30,5	36 12	M140000A	5,55
3"	34	24 12	M140000B	5,55
4"	40	10 2	M140000D	10,45

# ROHRDOPPELNIPPEL GEWINDE KONISCH ISO 7/1 (EN 10226-1) DIN 2982 (EN 10241)



Ø	LÄNGE		ART-NR SCHWARZ	€	ART-NR VERZINKT	€
1/8"	50	500 20			B5100050	0,65
1/8"	60	500 20			B5100060	0,70
1/4"	40	500 20	B1100140	1,30		
1/4"	50	500 20	B1100150	1,35	B5100150	1,50
1/4"	60	500 20	B1100160	1,45	B5100160	1,55
1/4"	80	200 20	B1100180	1,60	B5100180	1,75
1/4"	100	200 20	B1101100	1,80	B5101100	1,95
1/4"	120	200 20	B1101120	1,95	B5101120	2,05
1/4"	150	120 20	B1101150	2,20	B5101150	2,35
1/4"	200	90 10	B1101200	2,60	B5101200	2,90
1/4"	250	90 10	B1101250	3,10		
1/4"	300	90 10	B1101300	3,80		
3/8"	40	450 10	B1100240	0,85	B5100240	0,95
3/8"	50	250 10	B1100250	0,85	B5100250	1,10
3/8"	60	320 10	B1100260	1,20	B5100260	1,30
3/8"	70	230 10	B1100270	1,20	B5100270	1,30
3/8"	80	280 10	B1100280	1,20	B5100280	1,30
3/8"	90	210 10	B1100290	1,30	B5100290	1,45
3/8"	100	230 10	B1102100	1,30	B5102100	1,45
3/8"	120	200 10	B1102120	1,35	B5102120	1,55
3/8"	140	180 10	B1102140	1,45	B5102140	1,75
3/8"	150	120 10	B1102150	1,55	B5102150	2,05
3/8"	160	90 10	B1102160	1,95	B5102160	2,20
3/8"	180	90 10	B1102180	2,20	B5102180	2,20
3/8"	200	80 10	B1102200	2,20	B5102200	2,30
3/8"	250	60 10	B1102250	2,30	B5102250	3,00
3/8"	300	80 10	B1102300	2,65	B5102300	3,40
3/8"	400	60 10	B1102400	3,55	B5102400	4,60
3/8"	500	60 10	B1102500	4,15	B5102500	6,35
3/8"	1000	1			B5121000	a.Nachf.
1/2"	30	520 10	B1100330	0,75	B5100330	0,90
1/2"	40	370 10	B1100340	0,90	B5100340	0,95
1/2"	50	300 10	B1100350	0,90	B5100350	1,05
1/2"	60	250 10	B1100360	0,95	B5100360	1,05
1/2"	70	240 10	B1100370	1,00	B5100370	1,15
1/2"	80	210 10	B1100380	1,05	B5100380	1,30
1/2"	90	150 10	B1100390	1,10	B5100390	1,30
1/2"	100	140 10	B1103100	1,10	B5103100	1,30
1/2"	110	140 10	B1103110	1,20		
1/2"	120	120 10	B1103120	1,30	B5103120	1,50
1/2"	140	80 10	B1103140	1,45	B5103140	1,75
1/2"	150	110 10	B1103150	1,45	B5103150	1,75
1/2"	160	100 10	B1103160	1,50	B5103160	1,85

GANZE STAHLMUFFE						
Ø	LÄNGE		ART-NR SCHWARZ	€	ART-NR VERZINKT	€
1/8"	17	1000 10	M1100000	0,48	M5100000	0,66
1/4"	25	500 10	M1100001	0,57	M5100001	0,66
3/8"	26	400 10	M1100002	0,57	M5100002	0,74
3/8"	60	220 10	M1100062	1,15		
1/2"	34	200 10	M1100003	0,66	M5100003	0,84
1/2"	50	170 10	M1100350	1,20		
1/2"	60	170 10	M1100063	1,30		
1/2"	80	110 10	M1100083	1,10		
1/2"	100	80 10	M1100103	1,40		
3/4"	36	160 10	M1100004	0,89	M5100004	1,10
3/4"	48	120 10			M5100484	1,35
3/4"	60	120 10	M1100064	1,10		
3/4"	80	100 10	M1100084	1,35		
3/4"	100	70 10	M1100104	2,50		
1"	43	100 10	M1100005	1,10	M5100005	1,75
1"	80	100 10	M1100085	2,15		
1"	100	100 10	M1100105	2,50		
1 1/4"	48	60 10	M1100006	1,75	M5100006	2,15
1 1/2"	48	50 10	M1100007	2,15	M5100007	2,80
2"	56	24 4	M1100008	3,15	M5100008	3,90
2 1/2"	65	18 3	M110000A	6,25	M510000A	7,00
3"	71	24 1	M110000B	7,30	M510000B	9,35
4"	83	12 1	M110000D	13,60	M510000D	17,80
5"	92	6 1	M110000F	19,90	M510000F	27,05
6"	92	4 1	M110000G	40,65	M510000G	51,25

Ø	LÄNGE		ART-NR SCHWARZ	€	ART-NR VERZINKT	€
1/2"	180	100 10	B1103180	1,60	B5103180	2,05
1/2"	200	70 10	B1103200	1,70	B5103200	2,10
1/2"	220	70 10	B1103220	2,10		
1/2"	250	70 10	B1103250	2,35	B5103250	2,80
1/2"	300	70 10	B1103300	2,60	B5103300	3,25
1/2"	400	50 5	B1103400	3,65	B5103400	4,65
1/2"	500	40 5	B1103500	4,10	B5103500	5,35
1/2"	600	1			B5103600	a. Nachf.
1/2"	800	1			B5103800	a. Nachf.
1/2"	1000	1	B1131000	a.Nachf.	B5131000	a. Nachf.
1/2"	1500				B5131500	a. Nachf.
1/2"	2000				B5132000	a. Nachf.
3/4"	30	230 10			B5100430	0,90
3/4"	40	220 10	B1100440	0,90	B5100440	1,10
3/4"	50	180 10	B1100450	0,90	B5100450	1,10
3/4"	60	150 10	B1100460	1,05	B5100460	1,30
3/4"	70	130 10			B5100470	1,30
3/4"	80	120 10	B1100480	1,20	B5100480	1,35
3/4"	90	120 10			B5100490	1,50
3/4"	100	100 10	B1104100	1,30	B5104100	1,75
3/4"	110	100 10			B5104110	1,75
3/4"	120	70 10	B1104120	1,50	B5104120	1,80
3/4"	140	70 10	B1104140	1,70	B5104140	2,20
3/4"	150	60 10	B1104150	1,70	B5104150	2,30
3/4"	160	60 10	B1104160	1,80	B5104160	2,30
3/4"	180	60 10	B1104180	2,00	B5104180	2,50
3/4"	200	50 10	B1104200	2,05	B5104200	2,65
3/4"	250	40 10	B1104250	2,85	B5104250	3,60
3/4"	300	50 10	B1104300	3,30	B5104300	4,10
3/4"	400	30 5	B1104400	4,40	B5104400	5,55
3/4"	500	30 5	B1104500	5,30	B5104500	6,45
3/4"	600	1			B5104600	a. Nachf.
3/4"	800	1			B5104800	a. Nachf.
3/4"	1000	1			B5141000	a. Nachf.
3/4"	1500	1			B5141500	a. Nachf.
3/4"	2000	1			B5142000	a. Nachf.



## ROHRDOPPELNIPPEL GEWINDE KONISCH ISO 7/1 (EN 10226-1) DIN 2982 (EN 10241)

Ø	LÄNGE		ART-NR SCHWARZ	€	ART-NR VERZINKT	€
1"	40	140 10	B1100540	1,45	B5100540	1,45
1"	50	140 10	B1100550	1,45	B5100550	1,45
1"	60	120 10	B1100560	1,45	B5100560	1,60
1"	70	100 10			B5100570	1,85
1"	80	80 10	B1100580	1,55	B5100580	1,85
1"	90	80 10			B5100590	2,20
1"	100	60 10	B1105100	1,80	B5105100	2,30
1"	120	60 10	B1105120	2,00	B5105120	2,35
1"	140	50 10	B1105140	2,30	B5105140	2,75
1"	150	40 10	B1105150	2,35	B5105150	2,75
1"	160	40 10	B1105160	2,60	B5105160	3,00
1"	180	40 10	B1105180	2,75	B5105180	3,10
1"	200	30 10	B1105200	3,00	B5105200	3,50
1"	250	30 10	B1105250	3,90	B5105250	4,40
1"	300	30 10	B1105300	4,65	B5105300	5,35
1"	400	25 5	B1105400	6,20	B5105400	7,20
1"	500	20 5	B1105500	7,50	B5105500	8,50
1"	600	1			B5105600	a. Nachf.
1"	800	1			B5105800	a. Nachf.
1"	1000	1			B5151000	a. Nachf.
1"	1500	1			B5151500	a. Nachf.
1"	2000	1			B5152000	a. Nachf.
1 1/4"	40	80 10	B1100640	1,75	B5100640	1,95
1 1/4"	50	60 10	B1100650	1,95	B5100650	1,95
1 1/4"	60	60 10	B1100660	1,95	B5100660	2,20
1 1/4"	70	40 10	B1100670	2,20	B5100670	2,20
1 1/4"	80	50 10	B1100680	2,20	B5100680	2,20
1 1/4"	100	40 10	B1106100	2,25	B5106100	2,65
1 1/4"	120	30 10	B1106120	2,60	B5106120	3,10
1 1/4"	140	25 5	B1106140	3,05	B5106140	3,65
1 1/4"	150	25 5	B1106150	3,10	B5106150	3,65
1 1/4"	160	25 5	B1106160	3,30	B5106160	4,00
1 1/4"	180	25 5	B1106180	3,60	B5106180	4,10
1 1/4"	200	20 5	B1106200	3,75	B5106200	4,45
1 1/4"	250	15 5	B1106250	5,10	B5106250	5,90
1 1/4"	300	20 5	B1106300	5,85	B5106300	6,75
1 1/4"	400	16 2	B1106400	8,45	B5106400	9,95
1 1/4"	500	16 2	B1106500	10,30	B5106500	12,00
1 1/4"	600	1			B5106600	a. Nachf.
1 1/4"	800	1			B5106800	a. Nachf.
1 1/4"	1000	1			B5161000	a. Nachf.
1 1/2"	40	80 10	B1100740	2,10	B5100740	2,20
1 1/2"	50	40 10	B1100750	2,20	B5100750	2,30
1 1/2"	60	50 10	B1100760	2,20	B5100760	2,35
1 1/2"	70	40 10			B5100770	2,75
1 1/2"	80	40 10	B1100780	2,35	B5100780	2,75
1 1/2"	100	30 5	B1107100	2,65	B5107100	3,05
1 1/2"	120	25 5	B1107120	3,05	B5107120	3,50
1 1/2"	140	20 5	B1107140	3,40	B5107140	4,05
1 1/2"	150	20 5	B1107150	3,50	B5107150	4,40
1 1/2"	160	20 5	B1107160	4,00	B5107160	4,55
1 1/2"	180	20 5	B1107180	4,55	B5107180	5,10
1 1/2"	200	15 5	B1107200	4,55	B5107200	5,35
1 1/2"	250	10 5	B1107250	5,65	B5107250	6,50
1 1/2"	300	20 5	B1107300	6,85	B5107300	7,80
1 1/2"	400	12 2	B1107400	9,80	B5107400	11,25
1 1/2"	500	12 2	B1107500	11,60	B5107500	13,70
1 1/2"	600	1			B5107600	a. Nachf.
1 1/2"	700	1			B5107700	a. Nachf.
1 1/2"	800	1			B5107800	a. Nachf.
1 1/2"	1000	1			B5171000	a. Nachf.

Ø	LÄNGE		ART-NR SCHWARZ	€	ART-NR VERZINKT	€
2"	40	40 5			B5100840	2,90
2"	50	40 5			B5100850	3,35
2"	60	30 5	B1100860	2,90	B5100860	3,40
2"	80	24 6	B1100880	3,10	B5100880	3,40
2"	90	20 5			B5100890	3,40
2"	100	20 5	B1108100	3,15	B5108100	4,10
2"	120	16 4	B1108120	3,90	B5108120	4,95
2"	140	12 4	B1108140	4,95	B5108140	5,65
2"	150	12 4	B1108150	5,05	B5108150	5,70
2"	160	12 4	B1108160	5,35	B5108160	6,40
2"	180	12 4	B1108180	5,80	B5108180	6,75
2"	200	12 4	B1108200	6,15	B5108200	7,00
2"	250	9 3	B1108250	8,05	B5108250	8,95
2"	300	12 4	B1108300	8,95	B5108300	11,00
2"	400	10 2	B1108400	13,05	B5108400	15,35
2"	500	12 2	B1108500	15,60	B5108500	18,25
2"	600	1			B5108600	A Nachf.
2"	800	1			B5108800	A Nachf.
2"	1000	1			B5181000	A Nachf.
2 1/2"	80	12 4	B1100A80	5,60	B5100A80	5,95
2 1/2"	100	12 4	B110A100	5,85	B510A100	6,50
2 1/2"	120	8 4	B110A120	7,40	B510A120	7,25
2 1/2"	140	6 3	B110A140	7,45	B510A140	7,95
2 1/2"	150	6 3	B110A150	7,60	B510A150	8,45
2 1/2"	160	6 3	B110A160	8,05	B510A160	9,00
2 1/2"	180	6 3	B110A180	9,40	B510A180	10,55
2 1/2"	200	6 3	B110A200	9,80	B510A200	11,30
2 1/2"	250	4 4	B110A250	11,85	B510A250	12,80
2 1/2"	300	8 4	B110A300	13,60	B510A300	15,15
2 1/2"	400	6 2			B510A400	20,35
2 1/2"	500	5 1			B510A500	24,65
2 1/2"	600	1			B510A600	A Nachf.
2 1/2"	800	1			B510A800	A Nachf.
2 1/2"	1000	1			B51A1000	A Nachf.
3"	80	12 4	B1100B80	6,50	B5100B80	7,45
3"	100	8 2	B110B100	7,15	B510B100	7,75
3"	120	8 2	B110B120	8,00	B510B120	8,70
3"	140	4 2	B110B140	8,65	B510B140	9,70
3"	150	6 2	B110B150	8,90	B510B150	10,00
3"	160	4 2			B510B160	10,55
3"	180	4 2	B110B180	10,45	B510B180	11,85
3"	200	4 2	B110B200	12,35	B510B200	14,35
3"	250	4 2	B110B250	15,25	B510B250	16,65
3"	300	6 2	B110B300	16,75	B510B300	18,80
3"	400	4 2			B510B400	33,10
3"	500	4 2			B510B500	41,85
4"	80	5 1	B1100C80	11,35	B5100C80	11,85
4"	100	4 2	B110C100	12,25	B510C100	13,05
4"	120	3 1	B110C120	13,90	B510C120	14,70
4"	140	3 1	B110C140	14,10	B510C140	14,70
4"	150	3 1	B110C150	14,40	B510C150	15,40
4"	160	3 1	B110C160	14,90	B510C160	15,40
4"	180	2 1	B110C180	15,65	B510C180	16,65
4"	200	6 2	B110C200	16,45	B510C200	20,40
4"	250	4 2	B110C250	20,60	B510C250	22,55
4"	300	3 1	B110C300	25,25	B510C300	27,70
4"	400	3 1			B510C400	56,20
4"	500	3 1			B510C500	65,20





**ATUSA DEUTSCHLAND GmbH**  
Breitscheider Weg 117a  
D-40885 RATINGEN - **DEUTSCHLAND**  
Tel. +49 2102 92914 0  
[info.germany@atusagroup.com](mailto:info.germany@atusagroup.com)  
[www.atusagroup.com](http://www.atusagroup.com)